

LEGEND

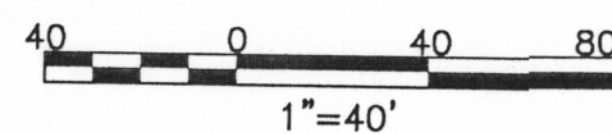
- CURRENT BUILDINGS
- FORMER BUILDINGS
- SUPPLEMENTAL INVESTIGATION SOIL BORING LOCATION
- SOIL BORING LOCATION
- TEMPORARY WELL LOCATION
- EXISTING WELL LOCATION

HISTORIC STRUCTURES

- LP = LEACHING POOL
- DW = DRY WELL
- DR = DRAIN
- CT = CISTERN
- ST = SEPTIC TANKS
- IL = INLET
- HY = HYDRANT
- CP = CESSPOOL
- WM = WATER METER PIT

IT IS A VIOLATION OF LAW FOR ANY PERSON, UNLESS ACTING UNDER THE DIRECTION OF A LICENSED ENGINEER, TO ALTER THIS DOCUMENT.

THIS DRAWING WAS PREPARED AT THE SCALE INDICATED IN THE TITLE BLOCK. INACCURACIES IN THE STATED SCALE MAY BE INTRODUCED WHEN DRAWINGS ARE REPRODUCTION BY ANY MEANS. USE THE GRAPHIC SCALE BAR IN THE TITLE BLOCK TO DETERMINE THE ACTUAL SCALE OF THIS DRAWING.



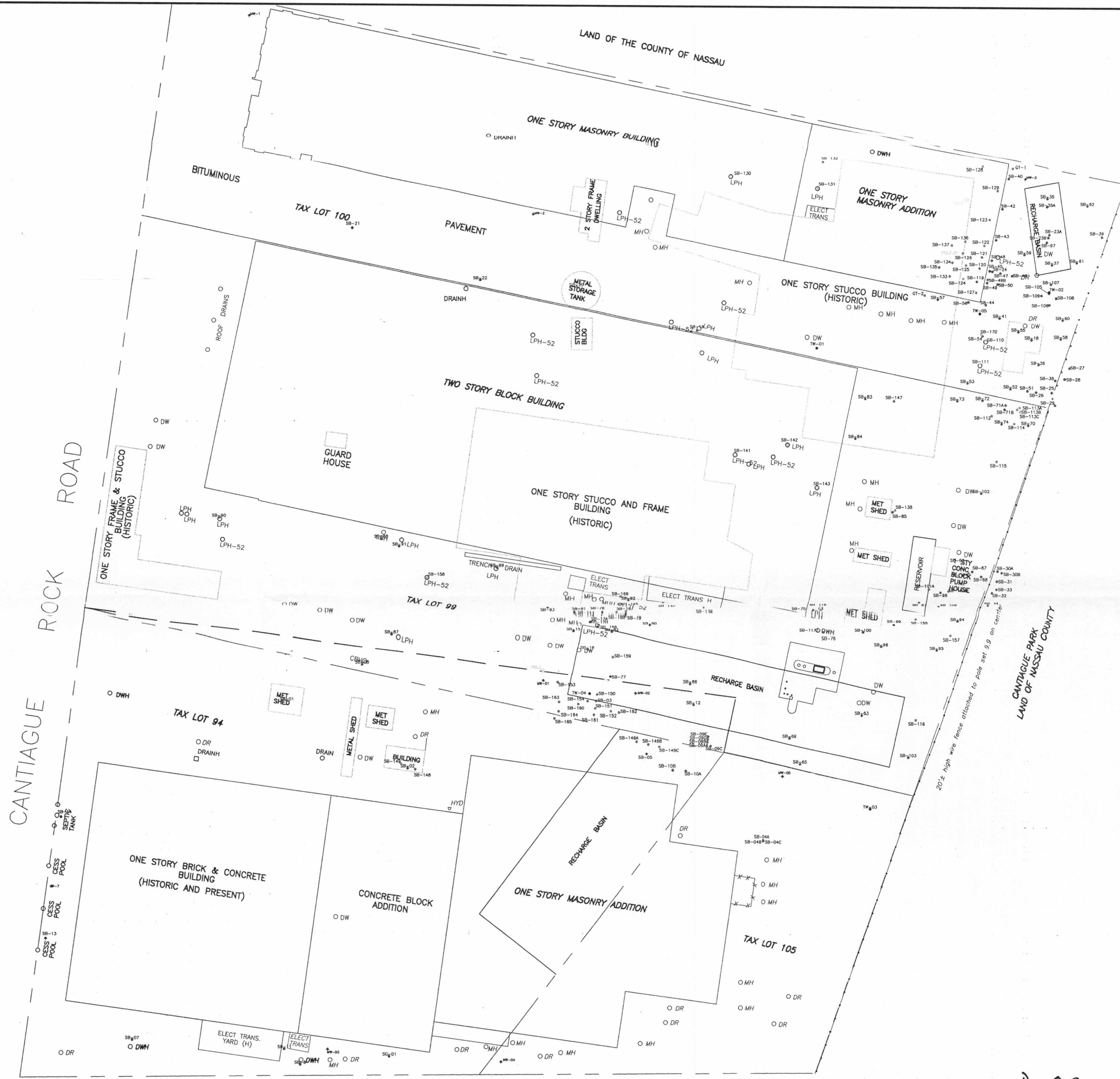
NO.	DATE	REVISION	INIT.



GTE OPERATIONS SUPPORT INCORPORATED
FORMER SYLVANIA ELECTRIC PRODUCTS
INCORPORATED FACILITY
HICKSVILLE, NEW YORK

**SUPPLEMENTAL INVESTIGATION
SOIL BORING LOCATIONS
WITH HISTORICAL OVERLAY**

FILE NO.
5816.009.803
DATE
MARCH 2001



D-02