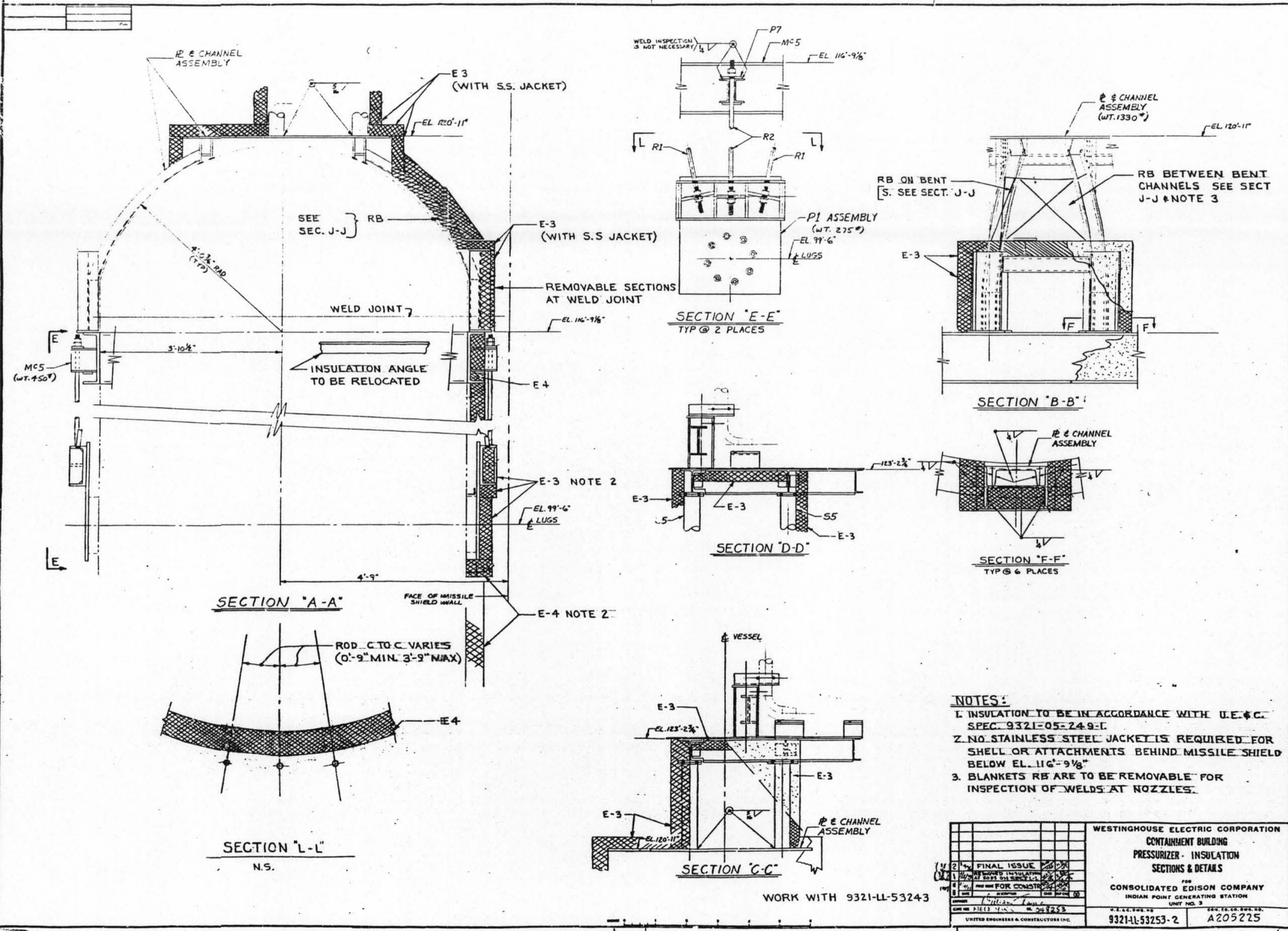


FOR REFERENCE ONLY

DRAWING NUMBER
 PLAN HOLD CORPORATION • IRVINE, CALIFORNIA
 REVISION BY NUMBER 075481

DRAWING NUMBER
UE & C
 PLAN HOLD CORPORATION • IRVINE, CALIFORNIA
 REVISION BY NUMBER 075481

DRAWING NUMBER
9321-LL-53253
 PLAN HOLD CORPORATION • IRVINE, CALIFORNIA
 REVISION BY NUMBER 075481



- NOTES:**
1. INSULATION TO BE IN ACCORDANCE WITH U.E. & C. SPEC. 9321-05-249-F.
 2. NO STAINLESS STEEL JACKETS REQUIRED FOR SHELL OR ATTACHMENTS BEHIND MISSILE SHIELD BELOW EL. 116'-9 1/8\".
 3. BLANKETS RB ARE TO BE REMOVABLE FOR INSPECTION OF WELDS AT NOZZLES.

WESTINGHOUSE ELECTRIC CORPORATION	
CONTAINMENT BUILDING	
PRESSURIZER - INSULATION	
SECTIONS & DETAILS	
FOR	
CONSOLIDATED EDISON COMPANY	
INDIAN POINT GENERATING STATION	
UNIT NO. 2	
DATE: 11/22/68	SCALE: AS SHOWN
BY: J.E.S.	NO. 93253
CHECKED: J.E.S.	9321-LL-53253-2
DESIGNED: J.E.S.	A205225
WESTINGHOUSE ENGINEERS & CONTRACTORS, INC.	

WORK WITH 9321-LL-53243

D-04