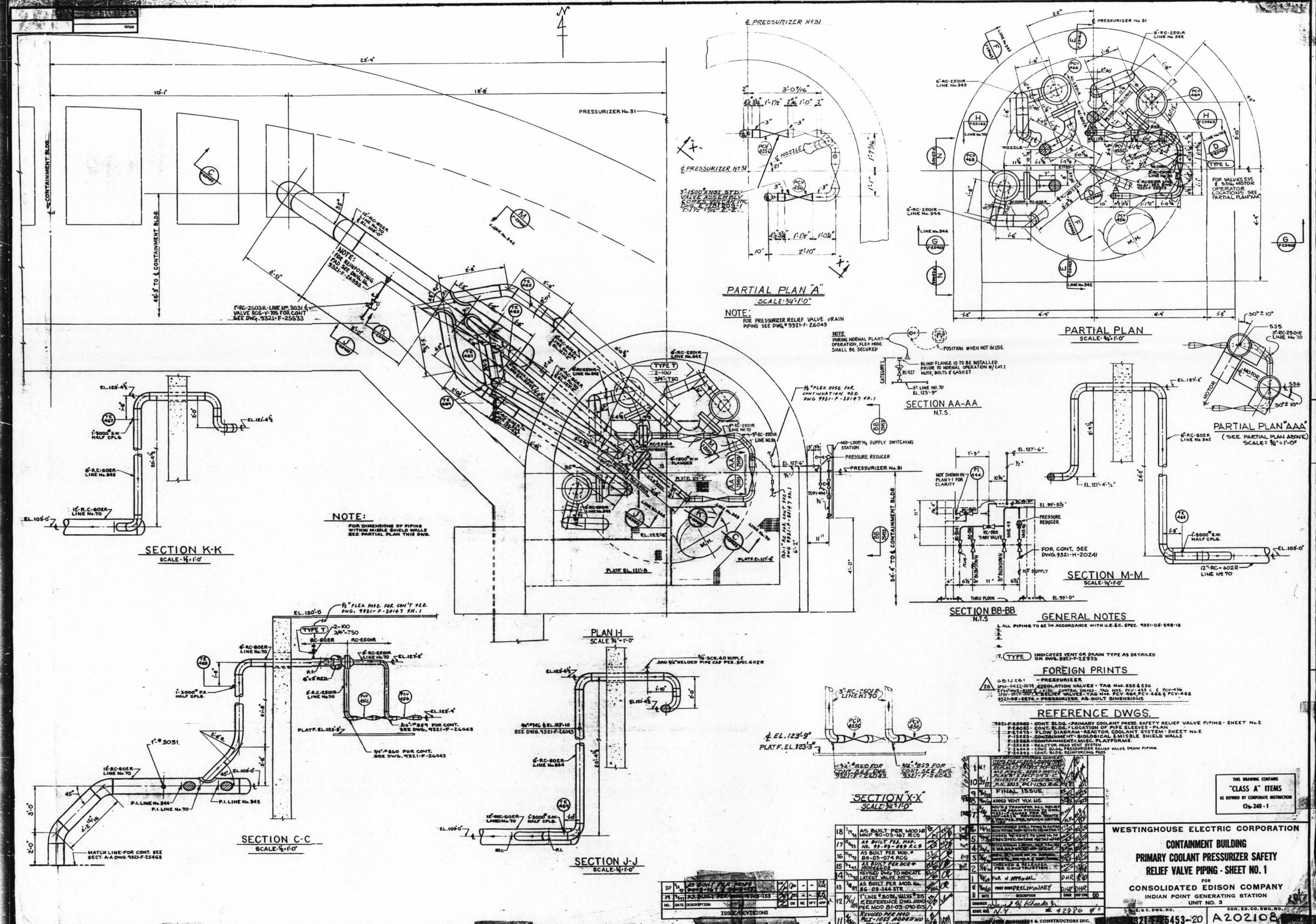


FOR REFERENCE ONLY



GENERAL NOTES

1. ALL PIPING TO BE IN ACCORDANCE WITH U.E.C. SPEC. 9321-05-248-16

2. TYPE INDICATES VENT OR DRAIN TYPE AS DETAILED

FOREIGN PRINTS

0011201 - PRESSURIZER

0011202 - ISOLATION VALVES - TAG NO. 232 & 233

0011203 - RELIEF VALVES - TAG NO. 232 & 233

0011204 - PRESSURIZER, AS-BUILT DIMENSIONS

REFERENCE DWGS.

9321-05-248-16 - PRIMARY COOLANT PRESS. SAFETY RELIEF VALVE PIPING - SHEET NO. 2

9321-05-248-17 - LOCATION OF PURE ELEMENT PLAN

9321-05-248-18 - BIOLOGICAL & MITER SHIELD WALLS

9321-05-248-19 - REACTOR COOLANT SYSTEM

9321-05-248-20 - REACTOR HEAD VENT SYSTEM

9321-05-248-21 - RELIEF VALVE PIPING

9321-05-248-22 - CONT. BLDG. REINFORCING PLAN

THIS DRAWING CONTAINS
"CLASS A" ITEMS
AS DEFINED BY CORPORATE INSTRUCTION
CIS-240-1

WESTINGHOUSE ELECTRIC CORPORATION
CONTAINMENT BUILDING
PRIMARY COOLANT PRESSURIZER SAFETY
RELIEF VALVE PIPING - SHEET NO. 1
FOR
CONSOLIDATED EDISON COMPANY
INDIAN POINT GENERATING STATION
UNIT NO. 3

DATE: 11/14/53
BY: [Signature]
CHECKED: [Signature]
APPROVED: [Signature]

9321-F-25453-20 A202108