



Commissioners' Technical Assistants Brief

Wednesday, October 3, 2001

1:00 p.m. - 2:00 p.m.

Room: 18th Floor Commissioners' Conference Room

Purpose: 1) To discuss and focus on the results of the staff's Bulletin 2001-01, "Circumferential Cracking of Reactor Pressure Vessel Head Penetration Nozzles," response reviews for the high susceptibility plants
2) To discuss the basis for the next Regulatory Action to be taken

Success: Commissioners' Technical Assistants understand the results of the staff's review and the next Regulatory Action(s)

Introduction:	Jake Zimmerman	5 mins.
Discussion of Reviews:	Allen Hiser	20 mins.
Discussion of Next Regulatory Action(s):	Mark Reinhart	20 mins.

Information in this record was deleted
in accordance with the Freedom of Information
Act, exemptions 4.5
FOIA- 2002-229

EXS

G-2

Modified
Item # 2
11/4

PROCESS/STATUS/SCHEDULE

Action Items Completed

Bulletin Issued - August 3, 2001

Bulletin Responses Received - September 4, 2001

Preliminary Review of Responses Complete - September 12, 2001

- NRR & RES - 7 Submittals
 - ▶ Plants that have found Cracking & Leakage (5 plants) - Bin 1
 - ▶ Plants with High Susceptibility, < 5 EFPY of Oconee 3 (7 plants) - Bin 2
- NRR/DLPM PM "Tiger" Team - 37 Submittals
 - ▶ Plants with Moderate Susceptibility, b/w 5 & 30 EFPY of Oconee 3 (32 plants) - Bin 3
 - ▶ Plants with Low Susceptibility, > 30 EFPY of Oconee 3 (25 plants) - Bin 4

Temporary Instruction (TI) Issued to Regions - September 20, 2001

PLANTS WITH CRACKING/LEAKAGE HISTORY (BIN 1) AND HIGH SUSCEPTIBILITY PLANTS (BIN 2)

Plants	Last Inspection		Next Inspection				CCDP* (IPE)	Regulatory Action Proposed ?
	Date	Method	Date		Method			
Oconee 1	11/2000	Qual. Visual - 100%	03/2002	OK	Qual. Visual - 100%	OK	1E-2 3.5E-3 (Response)	NO
Oconee 2	04/2001	Qual. Visual - 100%		OK	Qual. Visual - 100%	OK	1E-2 3.5E-3 (Response)	NO
Oconee 3	2/2001	Qual. Visual - 100%	11/2001	OK	Qual. Visual - 100%	OK	1E-2 3.5E-3 (Response)	NO
ANO-1	03/2001	Qual. Visual - 100%		OK	Qual. Visual - 100%	OK	1E-2 3.5E-3 (Response)	NO
D.C. Cook 2	09/1994	ID NDE - 91%	11/2001	OK	Remote Visual & ECT/UT	OK	4.7E-3	NO
Surry 1	Spr 2000	***	10/2001	OK	Qual. Visual - 100%	OK	5.3E-3	NO **
TMI-1	09/1999	Eff. Visual - 100%	10/2001	OK	Qual. Visual - 100%	OK	7.5E-3	NO
North Anna 1	02/1996	ID NDE - 31%	09/2001	OK	Qual. Visual (100%) & ECT/UT ****	NO	6.6E-3	YES ****
Robinson	04/2001	Visual - Partial		NO	Qual. Visual - 100% ****	NO	2E-2	YES ****
Davis-Besse	03/2000	Visual - Partial	04/2002	NO	Qual. Visual - 100%	OK	6.9E-3	YES
North Anna 2	Spr 2001			NO	Qual. Visual - 100% ****	NO	6.6E-3	YES ****
Surry 2	Fall 2000	*** " "	03/2002	NO	Qual. Visual - 100%	OK	5.3E-3	YES **

* Conditional core damage probability.

** Licensee has committed to qualified visual examination per conference call (September 21, 2001).

*** Prior inspection at last RFO, in accordance with GL 88-05 & GL 97-01.

**** Licensee may or does not have sufficient information to demonstrate that last inspection was a qualified visual examination.

Pre-decisional Information - Not for Public Disclosure
PLANTS HAVING MODERATE SUSCEPTIBILITY TO PWSCC AS OF 10/03/2001

Plant	Ranking (EFPY)	Next Inspection		Reg. Action Proposed
		Date	Method	
Beaver Valley 2	11.5	Sept. 2001	Eff. Visual in Sept. 2001	OK NO
Beaver Valley 2	16.5	Feb. 2002	Eff. Visual in Feb. 2002	OK NO
Calvert Cliffs 1	9.8	Feb. 2002	Eff. Visual & Qual. Vol., Feb. 2002	OK NO
Calvert Cliffs 2	10.2		Eff. Visual & Qual. Vol.	OK NO
Crystal River 3	5.9	Oct. 2001	Eff. Visual in Fall 2001	OK NO
Diablo Canyon 1	20.8	May 2002	Eff. Visual in May 2002	OK NO
Diablo Canyon 2	16.1		Eff. Visual in	OK NO
Farley 1	6.9	Oct. 2001	Eff. Visual in Oct. 2001	OK NO
Kewaunee	21.9	Oct. 2001	Eff. Visual in Fall 2001	OK NO
Point Beach 1	11.5		Eff. Visual in	OK NO
Point Beach 2	9.6	April 2002	Eff. Visual in Spring 2002	OK NO
Prairie Island 1	26.7		Eff. Visual in	OK NO
Prairie Island 2	26.8	Feb. 2002	Eff. Visual in Feb. 2002	OK NO
Salem 1	13.8		Eff. Visual in	OK NO
Salem 2	17.4	Apr. 2002	Eff. Visual in Apr. 2002	OK NO
San Onofre 2	10.7	May 2002	Eff. Visual or Qual Vol., May 2002	OK NO
San Onofre 3	10.8	Jan. 2002	Eff. Visual or Qual Vol.,	OK NO
St. Lucie 1	10.3		Eff. Visual in	OK NO
Turkey Point 3	6.3	Oct. 2001	Eff. Visual in October 2001	OK NO
Turkey Point 4	6.4	Mar. 2002	Eff. Visual in Spring 2002	OK NO
Waterford 3	7.8	Mar. 2002	Effective Visual in Spring 2002	OK NO
Fort Calhoun	17.9		Visual in	NO NO*
Ginna	15.0	Mar. 2002	Not Specified (notify 1/02)	NO NO*
Farley 2	8.3		NDE TBD in	NO NO*
Millstone 2	14.3	Feb. 2002	Not Specified (notify 1/02)	NO NO*
ANO-2	17.1	April 2002	Surface or Vol. of 25% in Spring 2002	NO YES*
Indian Point 2	26.6		Not Specified (new owner)	NO YES*
Indian Point 3	14.5		GLs 88-05 & 97-01	NO YES*
Palo Verde 1	17.0		None (Vol. in)	NO YES
Palo Verde 2	17.7	May 2002	None (Vol. in)	NO YES
Palo Verde 3	17.3		None (Vol. in)	NO YES
St. Lucie 2	11.3	Nov. 2001	None (Eff. Visual in)	NO YES

* Staff is pursuing additional information from the licensee for review

** Licensee proposed to remove one panel of insulation, and to look under the shroud to examine as many CRDMs as possible.

St. Lucie Unit 2 has 91 CRDMs

NEXT REGULATORY ACTION

- Adequate Protection
 - ▶ ⑦ Special Circumstance
 - ▶ ② Risk
 - ▶ ② Deterministic Standards
- Regulatory Action
 - ▶ Phone call with Licensee
 - ▶ Meeting with Licensee
 - ▶ Implement Regulatory Action

PERFORMANCE GOALS

- **Maintain Safety**

- Purpose of the bulletin is to collect information to determine if additional regulatory action is necessary
- Information to date provides a sufficient technical basis to show that conditions adverse to quality are being managed for most, but not all plants in the short-term
- Additional cracking should be anticipated - long-term management needed

- **Increase Public Confidence**

- Participation at public meetings via telephone
- Maintaining current information on Bulletin 2001-01 & Alloy 600 Web Sites
- Disciplined and timely reviews of plant-specific responses and regulatory action(s)

- **Make NRC Activities and Decisions More Effective, Efficient, and Realistic**

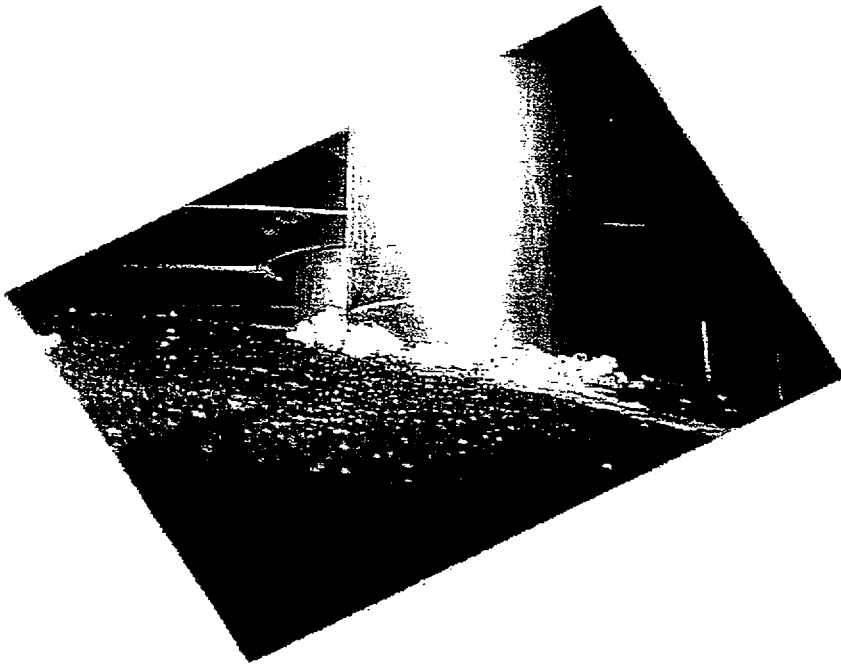
- Reviews prioritized based on susceptibility groupings and plant outage schedules
- Use of Risk Insights

- **Reduce Unnecessary Regulatory Burden**

- Information requested in the bulletin was minimized
- Stakeholder meetings on resolution of issue (Short- and Long-term)
- Inspection, Assessment, and Repair methods must be developed to manage this issue

STEPS TO SUPPORT REGULATORY ACTION

- Brief NRR Leadership Team - 9/20/01 (Complete)
- Brief NRR Executive Team - 9/26/01 (Complete)
- NRR Management Phone Calls w/ Licensees' - 9/28/01 (Complete)
 - Robinson 2
 - Davis-Besse
 - North Anna 2
 - Surry 2
- Brief Executive Director for Operations - 10/2/01 (Complete)
- Brief Commission Technical Assistants - 10/3/01
- Brief Committee to Review Generic Requirements - 10/11/01



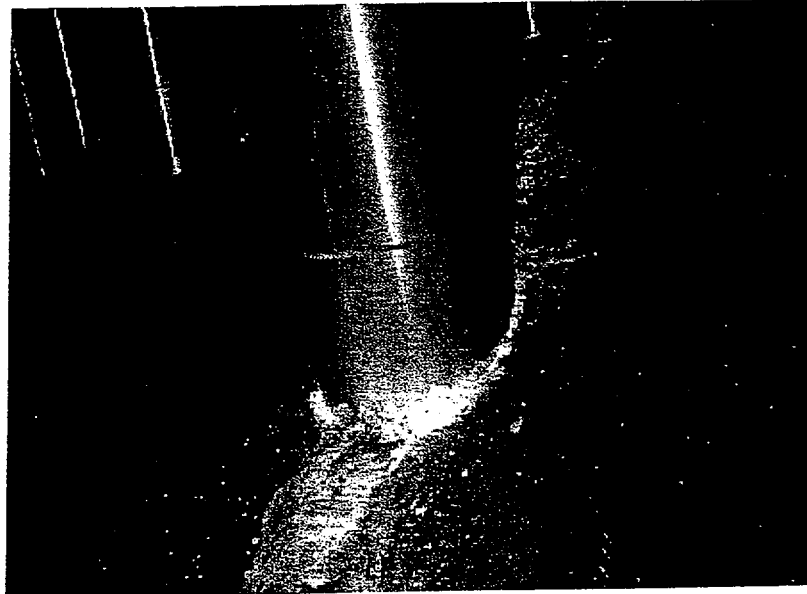
ONS-1 Reactor Vessel
Head showing Boric Acid
at CRDM Nozzle
(November 2000)

ONS-1 Reactor Vessel Head
showing Boric Acid at
Thermocouple Nozzle
(November 2000)



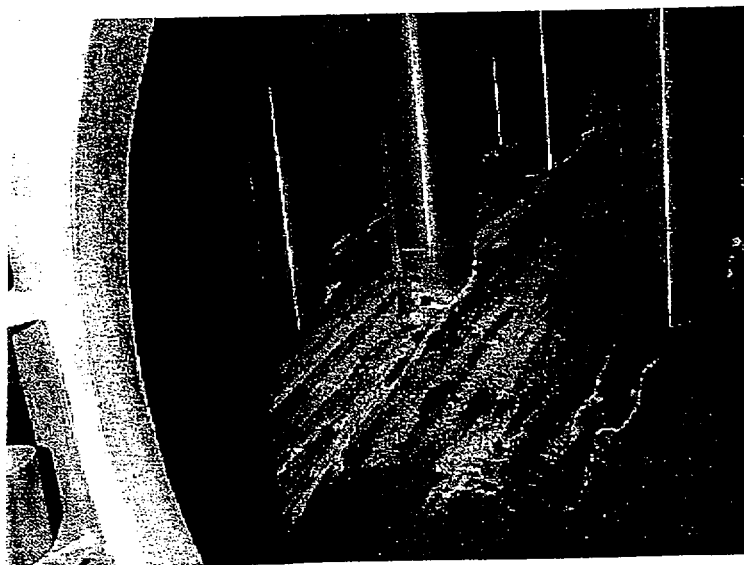
Visual Inspection at Oconee Unit 3 (February 2001)

CRDM Nozzle #56



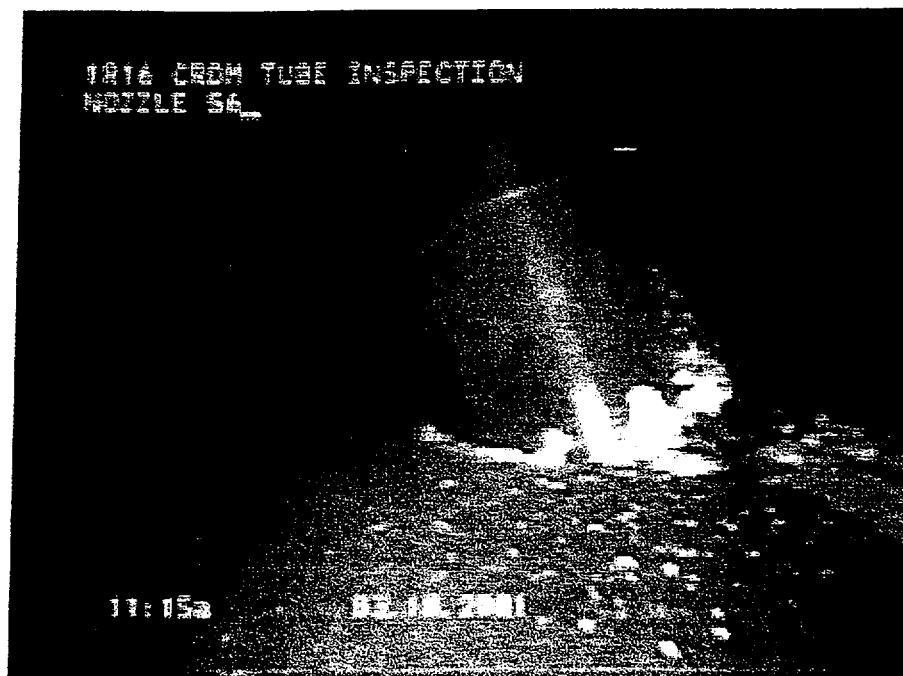
April 19, 2001

CRDM Nozzle #50

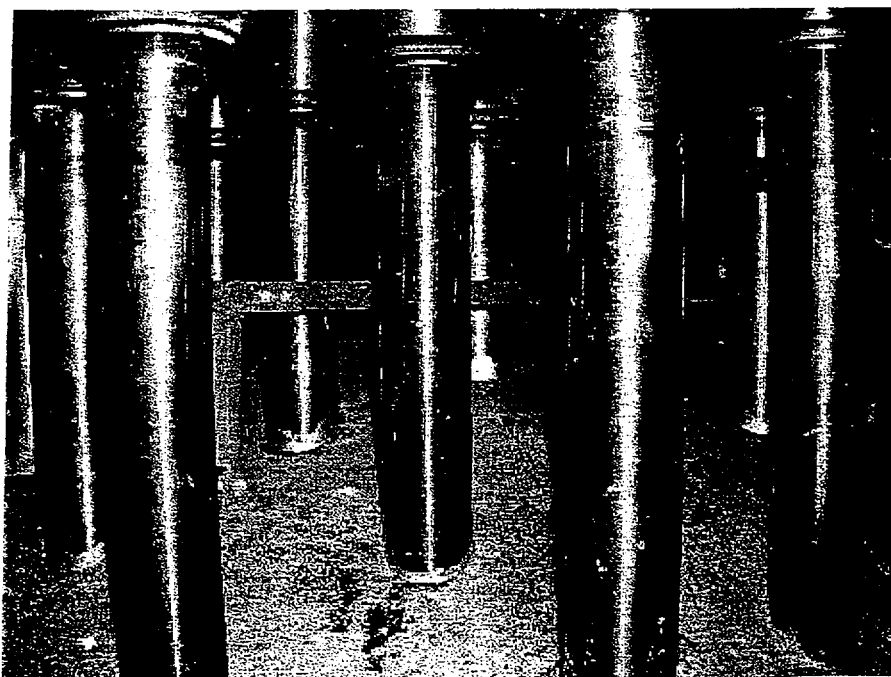


April 19, 2001

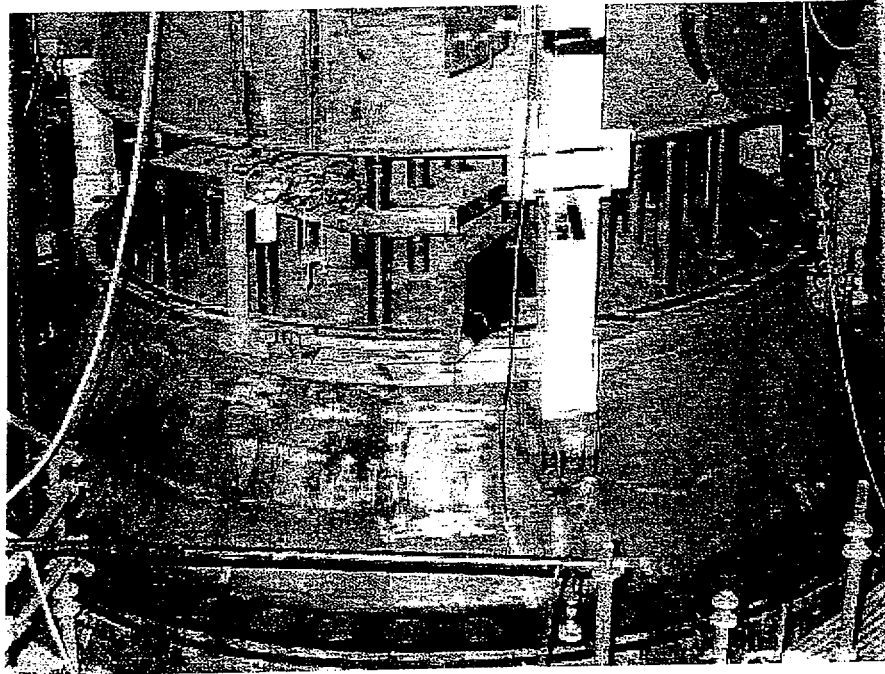
Visual Inspection at ANO-1
(March 2001)



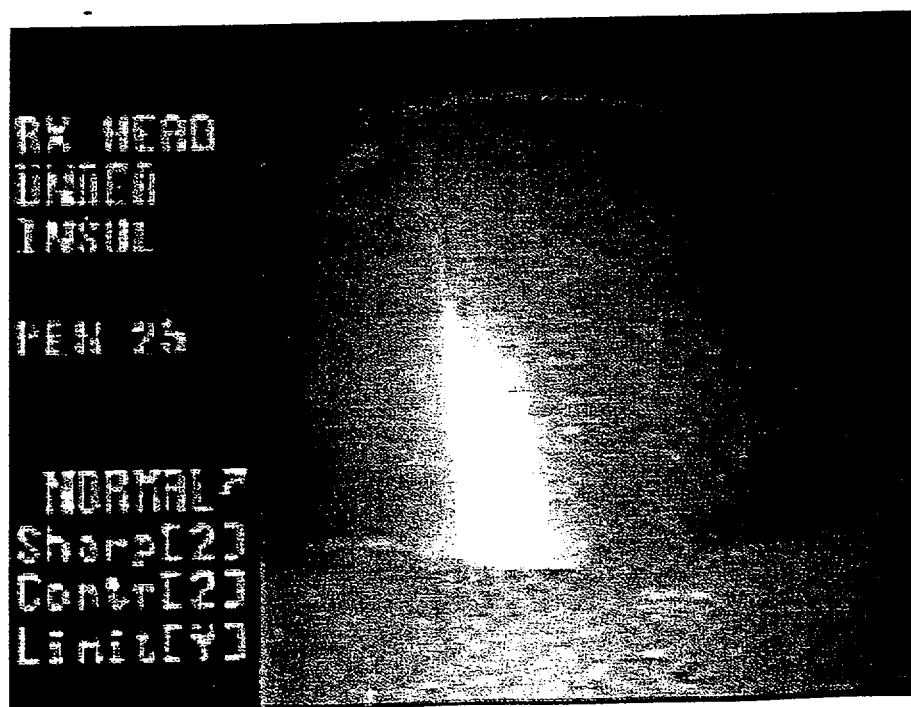
Visual Inspection at Robinson 2
(April 2001)



Visual Inspection at Salem Unit 1 (April 2001)



Visual Inspection at Farley Unit 2 (February 2001)

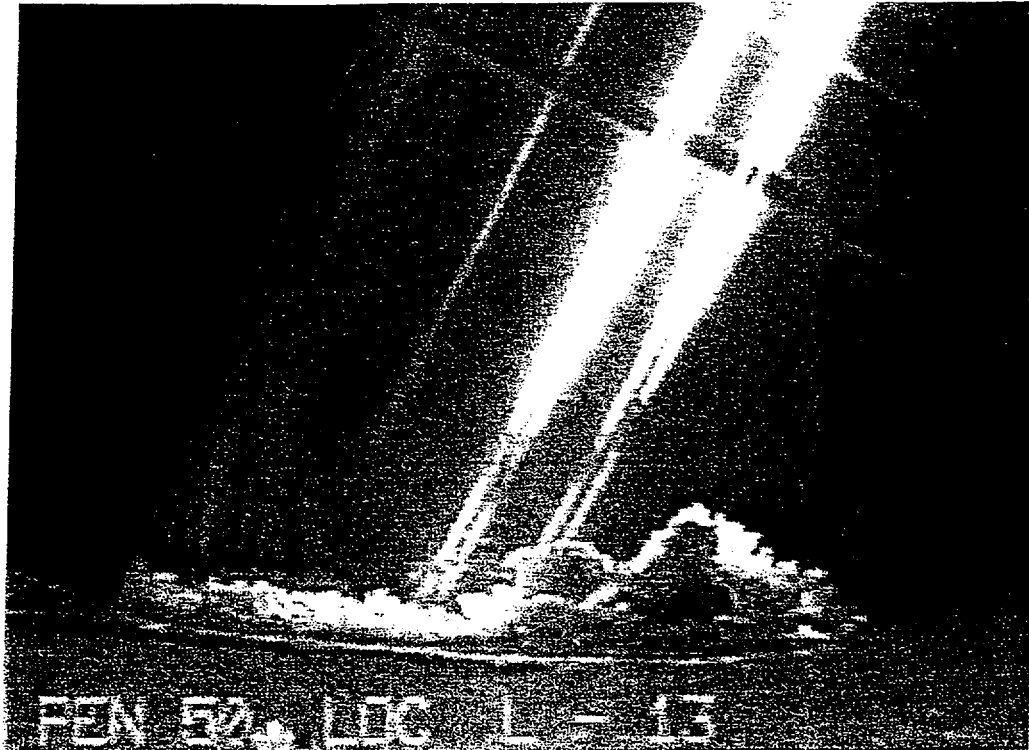


RX HEAD
UNITED
INSUL

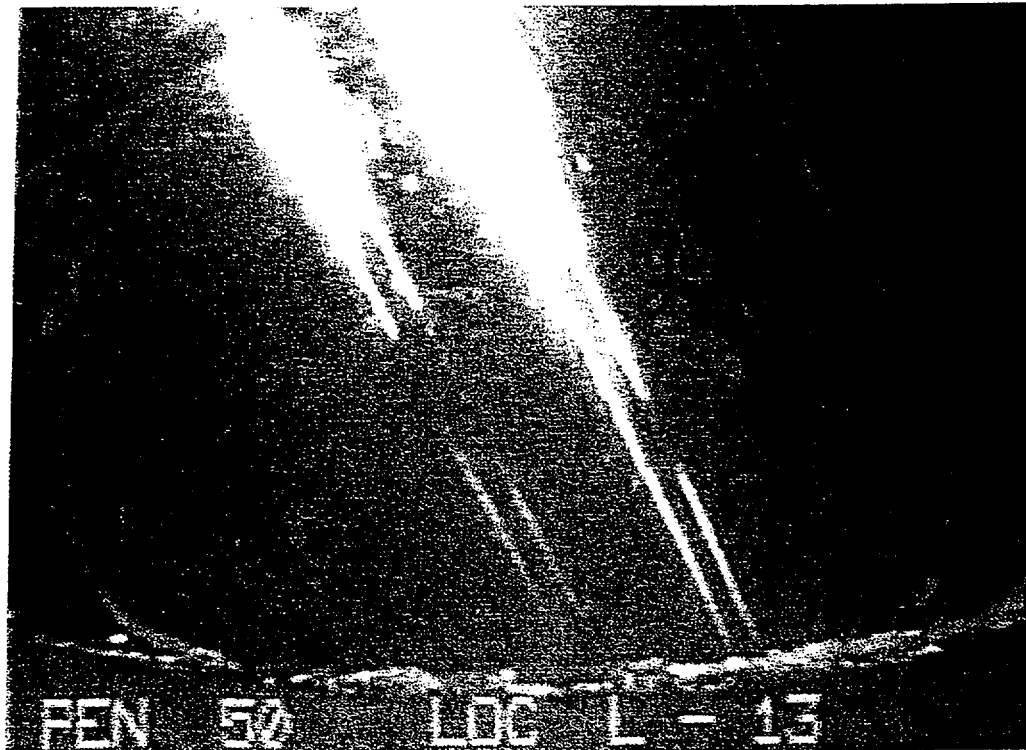
PEN 25

NORMAL
Sharp[23
Cont[23
Limit[43

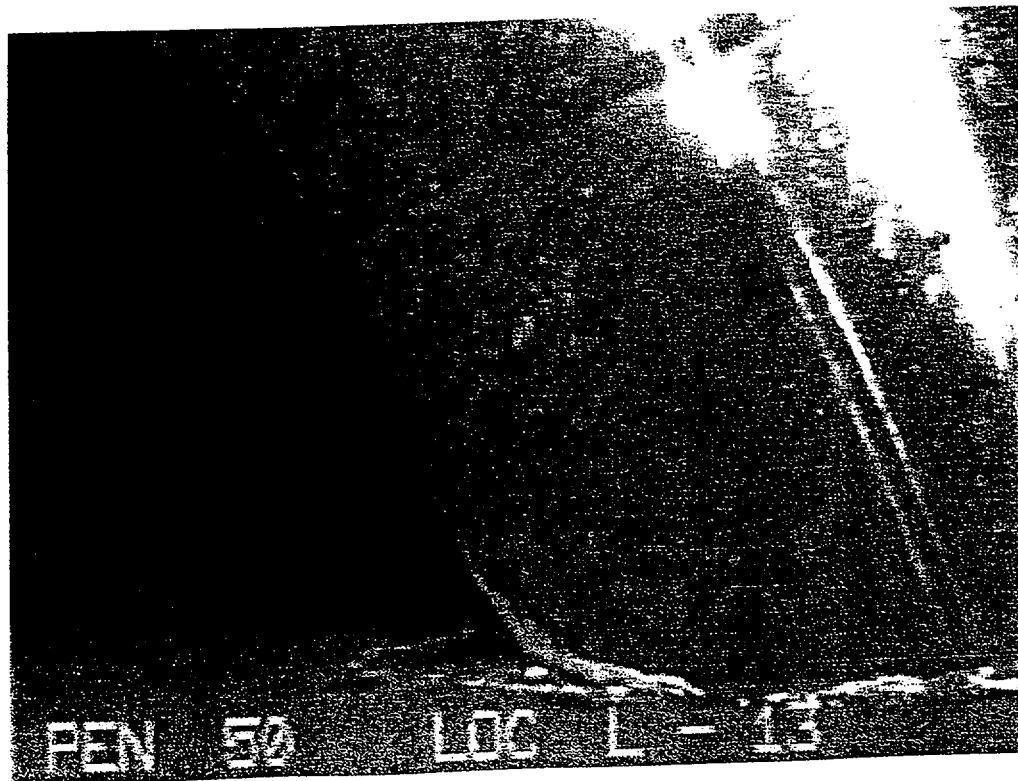
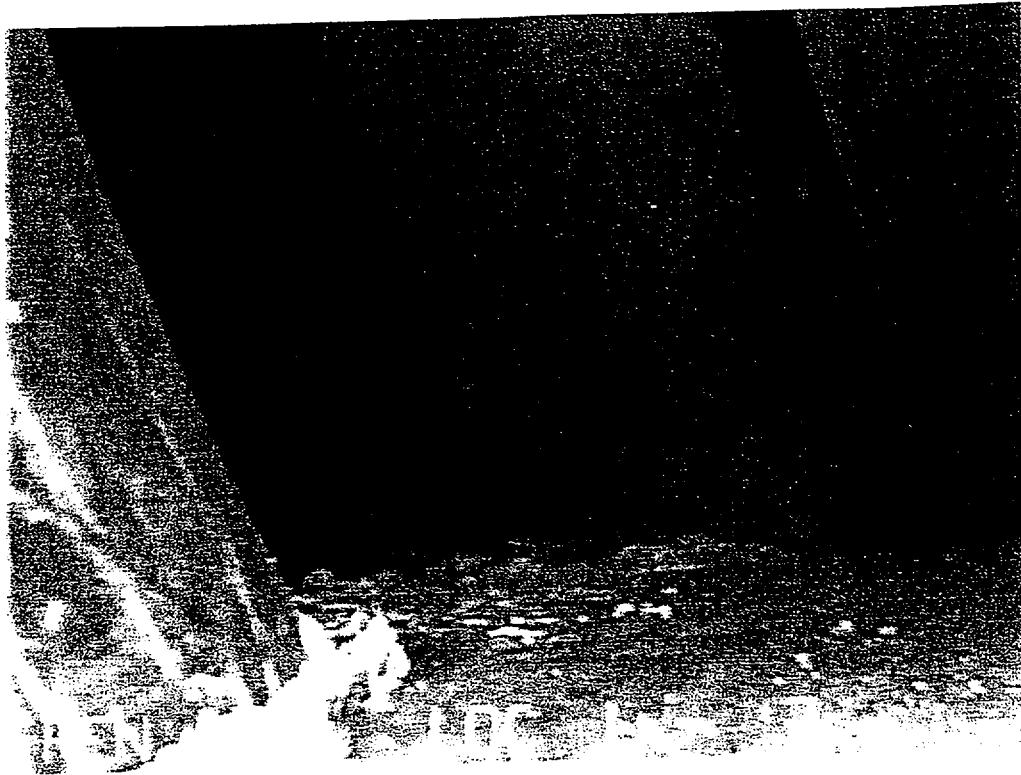
Visual Inspection at North Anna Unit ²
(September 2001)



EX 5

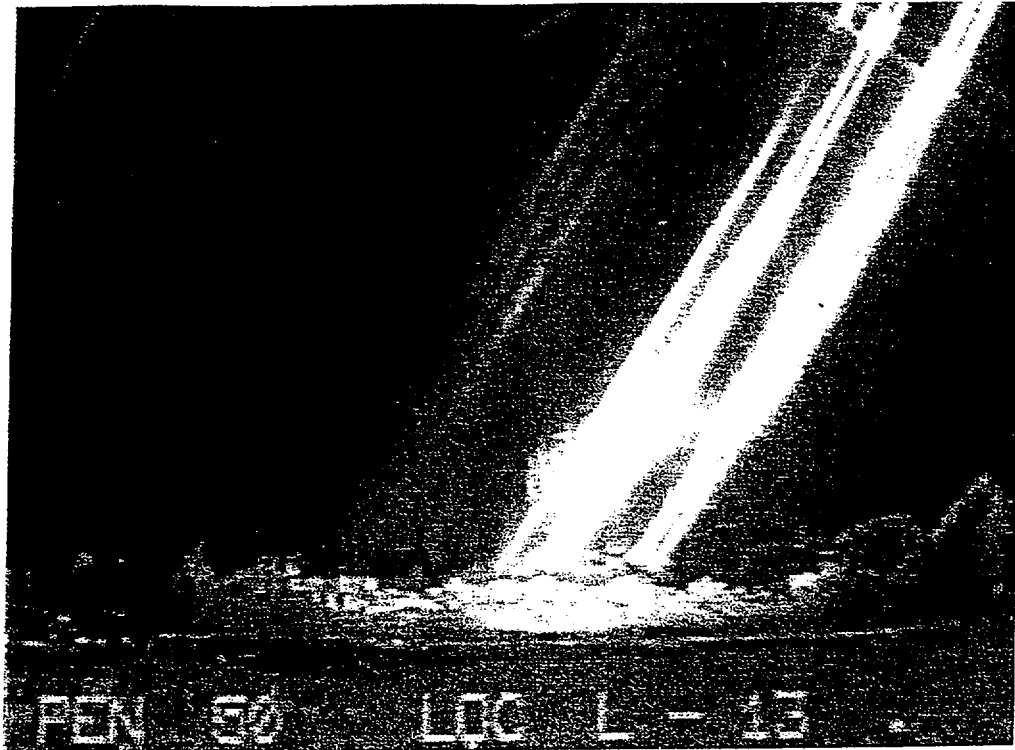


Visual Inspection at North Anna Unit 2 (cont.)
(September 2001)

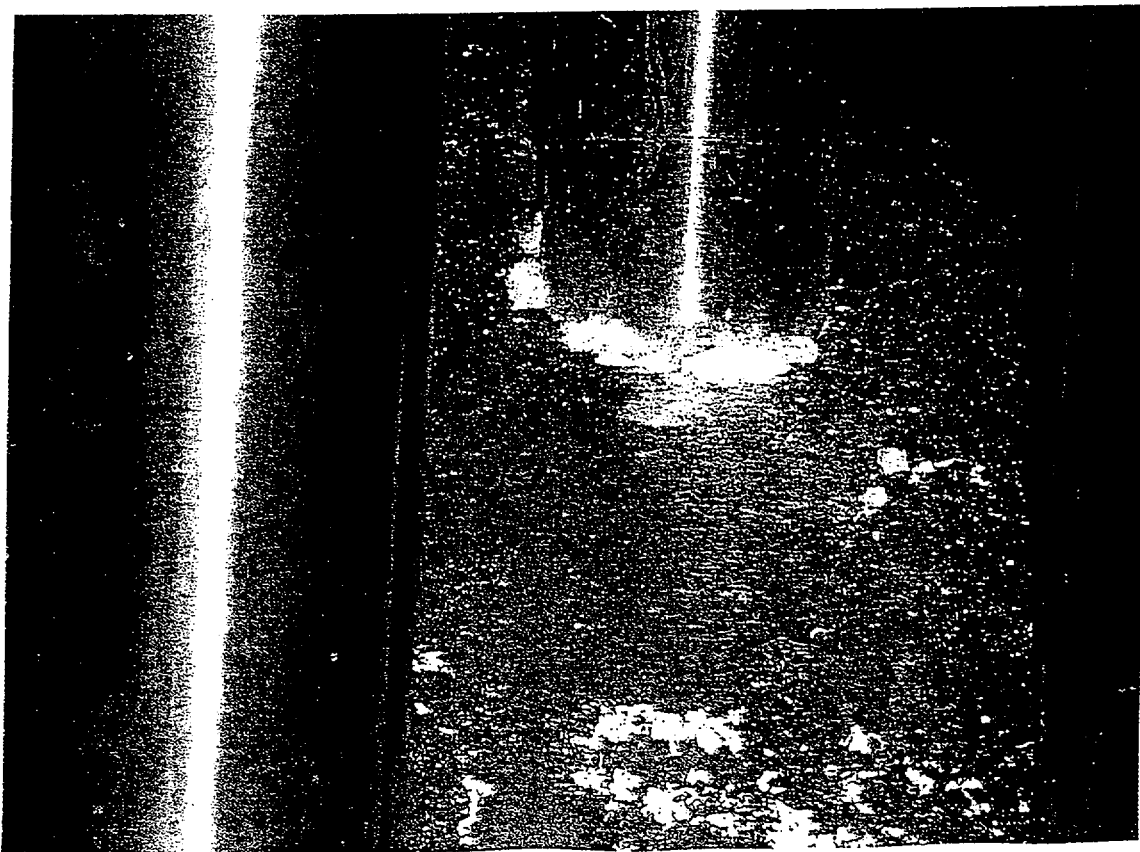


PEN 50 LOC L-13

Visual Inspection at North Anna Unit ¹/₂ (cont.)
(September 2001)



Visual Inspection at Crystal River 3
(October 2001)



EX5