

**TRANSMITTAL OF MEETING HANDOUT MATERIALS FOR  
IMMEDIATE PLACEMENT IN THE PUBLIC DOMAIN**

*This form is to be filled out (typed or hand-printed) by the person who announced the meeting (i.e., the person who issued the meeting notice). The completed form, and the attached copy of meeting handout materials, will be sent to the Document Control Desk on the same day of the meeting; under no circumstances will this be done later than the working day after the meeting.  
**Do not include proprietary materials.***

**DATE OF MEETING****08/22/2002**

The attached document(s), which was/were handed out in this meeting, is/are to be placed in the public domain as soon as possible. The minutes of the meeting will be issued in the near future. Following are administrative details regarding this meeting:

Docket Number(s)

**Project 689**

Plant/Facility Name

**Bechtel**

TAC Number(s) (if available)

Reference Meeting Notice

**8/13/02**Purpose of Meeting  
(copy from meeting notice)**To meet with Bechtel to discuss their construction****scheduling software**

NAME OF PERSON WHO ISSUED MEETING NOTICE

**Joseph M. Sebrosky**

TITLE

**Senior Project Manager**

OFFICE

**NRR**

DIVISION

**NRLPO**

BRANCH

Distribution of this form and attachments:

Docket File/Central File

**PUBLIC****DF03**



# Bechtel Power Scheduling Overview

May 7<sup>th</sup> 2002

8/8/2002

Bechtel Scheduling Overview

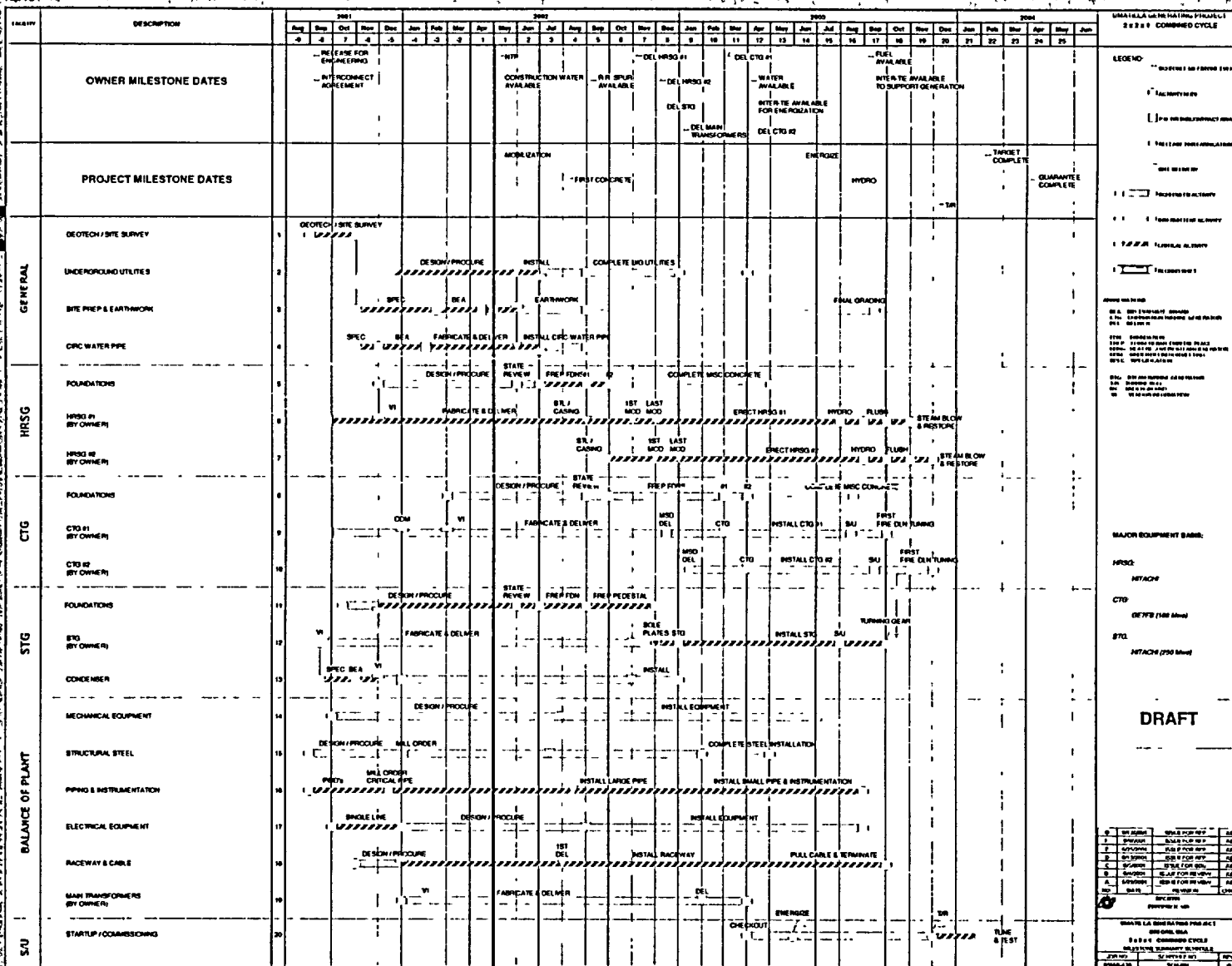
# MSS Development

## • Purpose:

- To communicate to Bechtel Management, Owner, Bank Engineers, and other off project personnel the overall duration and key milestones.

# Milestone Summary Schedule

Page 1 of 1



8/8/2002

Bedford Scheduling Overview



# Level 2 Schedule

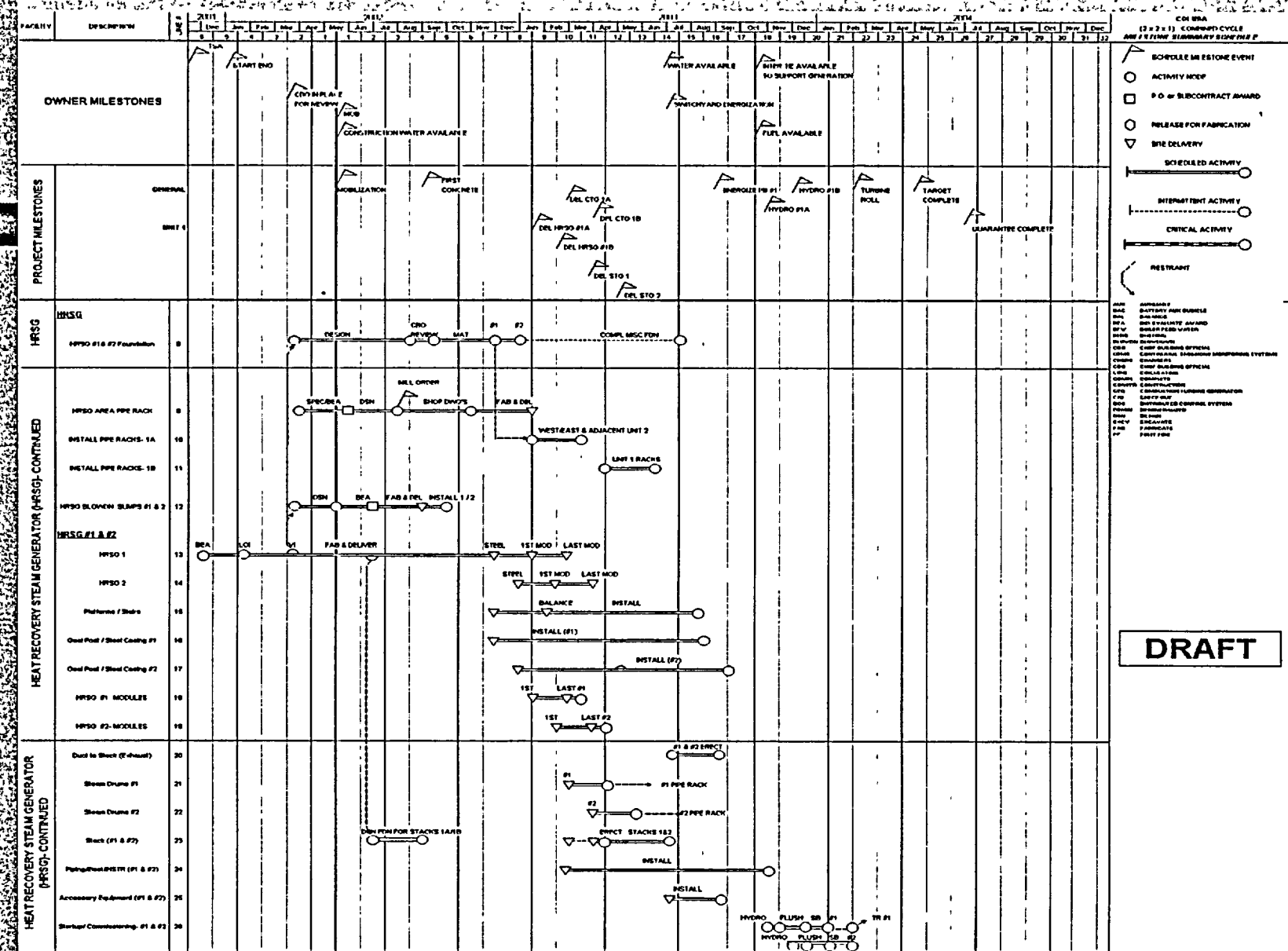
- Purpose

- To communicate to on project personnel overall durations and major components of work

- Large emphasis on Construction (by area) and Startup

- Used to establish the overall project plan for EPC

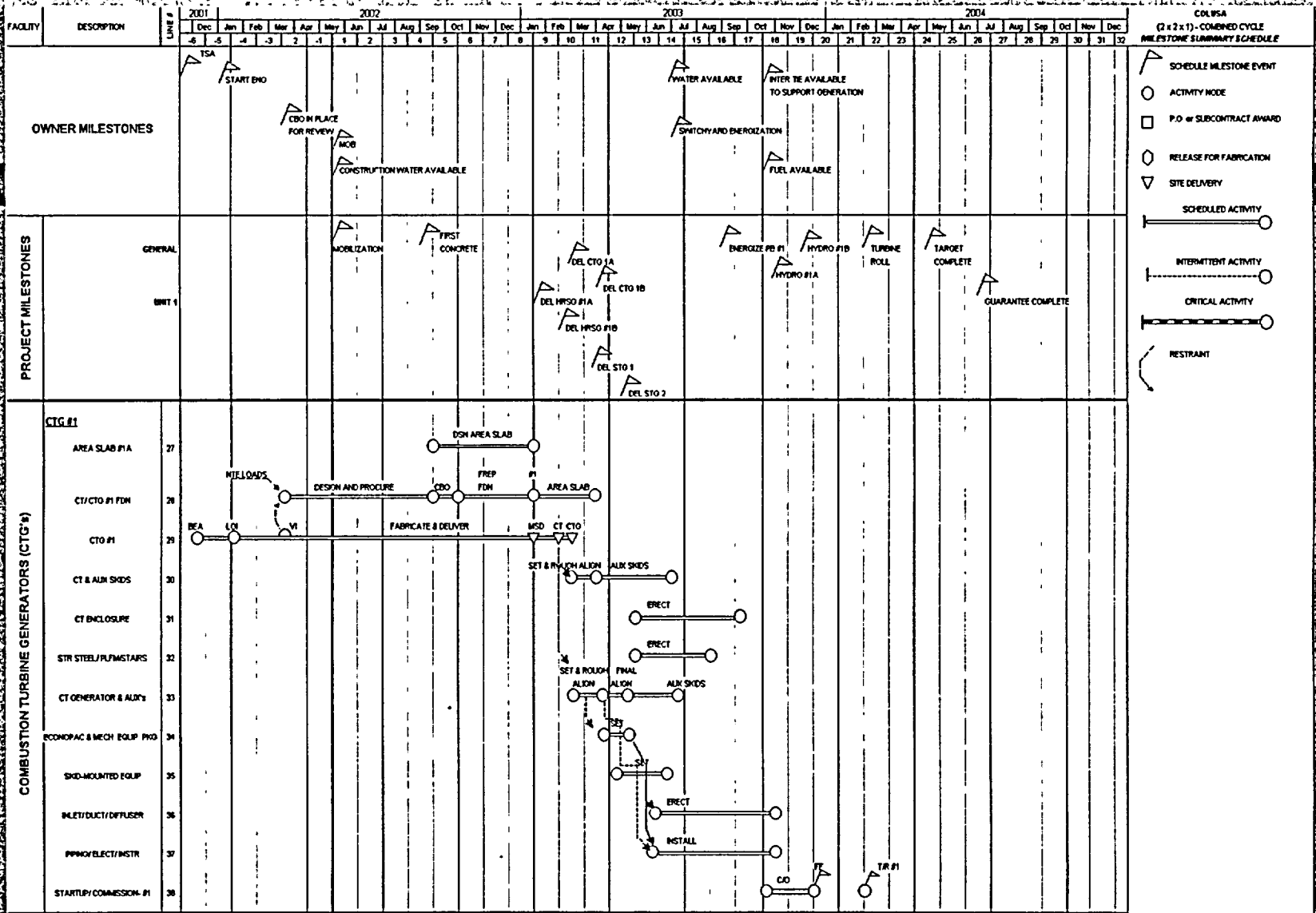
# Level 2 Schedule HRSG



8/8/2002

Bechtel Scheduling Overview

Level 2 Schedule CTH



3/8/2002

Bectel Scheduling Overview

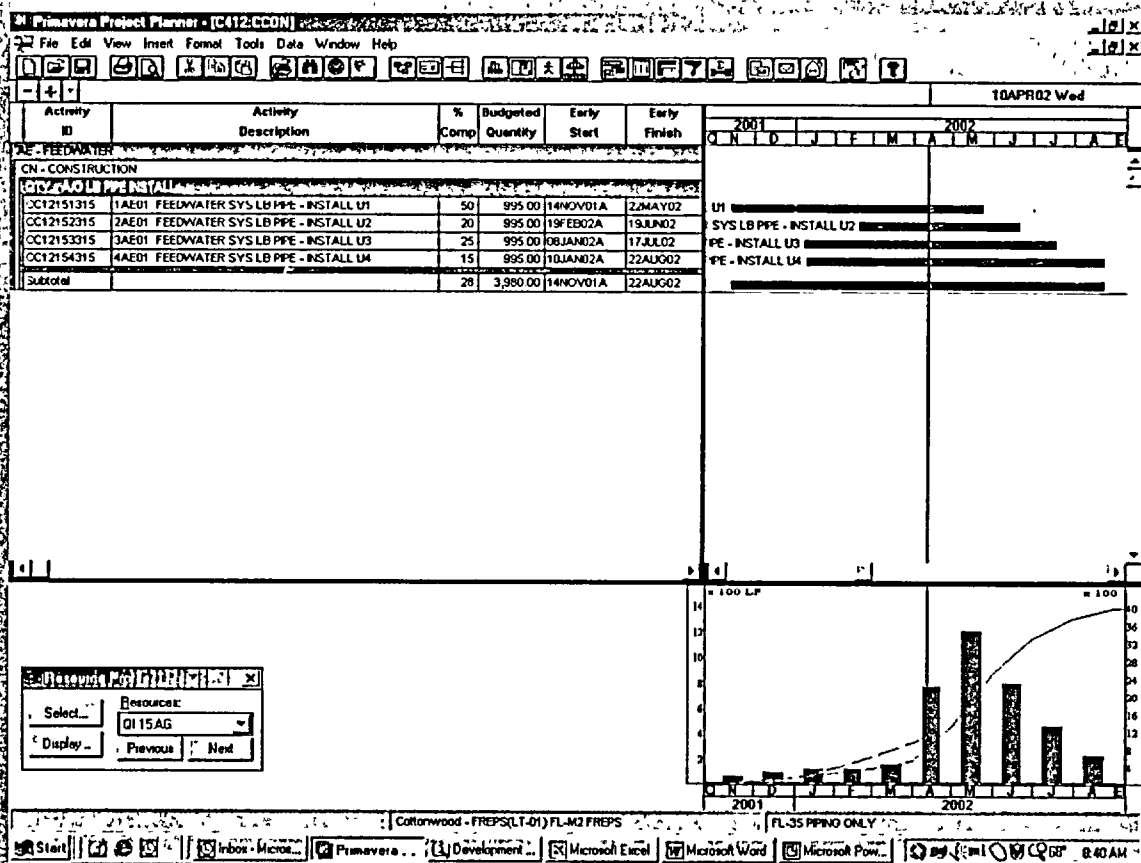
# Level 3 Schedule

## • Purpose

- CPM Schedule that allows the project to show impacts on other activities due to delays and changes
- Integrates Engineering, Construction, Procurement, and Startup
- Evaluate Impact to resources (Quantity and Job hours)



# Level 3 Schedule (Qty)

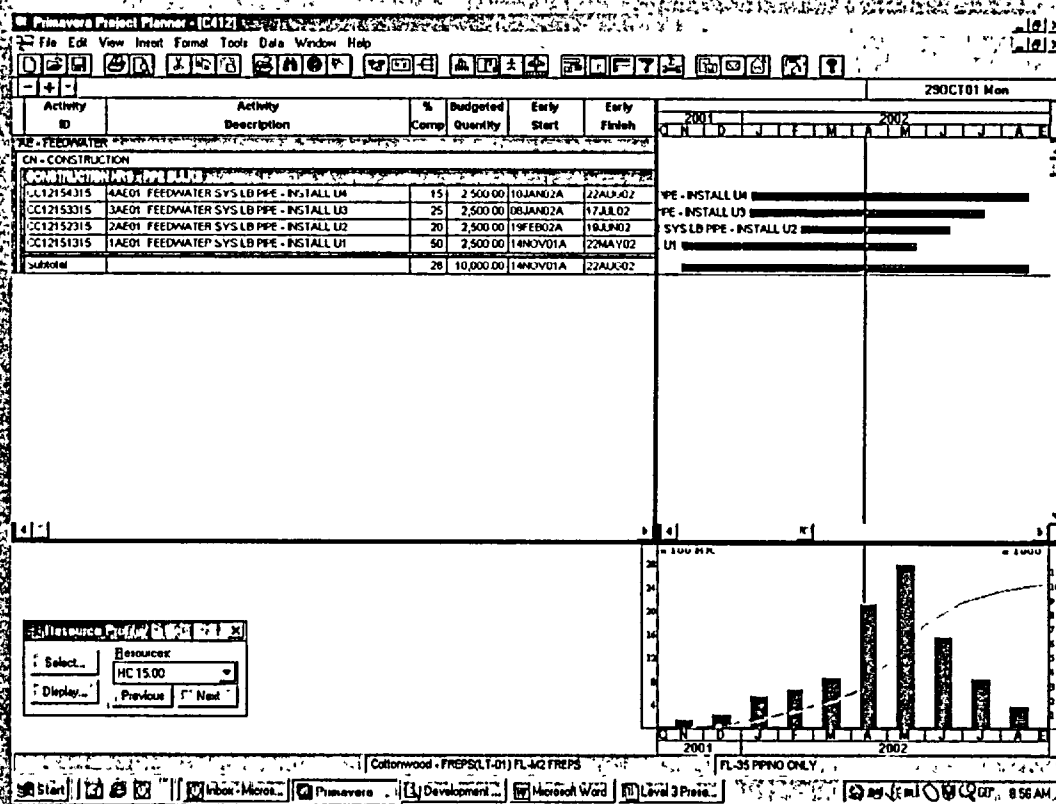


3/8/2002

Bechtel Scheduling Overview

8

# Level 3 Steinfeldie (10h-10hrs)



8/8/2002

## Bechtel Scheduling Overview

9

# Short Term Work Plan

- Engineering 4 week look ahead schedule that shows all deliverable from engineering to construction and procurement
- Construction 4 week look ahead schedule that show detailed work task and manpower required to perform



# ENG SHORT TERM WORK PLAN

Activity ID	Activity Description	Plan Dur	Early Start	Early Finish	Target 1 Early Finish	Variance Early Finish	% Comp	2001	2002						
								MAY	JUN	JUL	AUG	SEP	OCT	NOV	DEC
EJ - ENG CONTROL SYSTEMS															
AA - HRSG STEAM															
4EAAEJ-180	AA (HRSG) - LEVEL SETTING DIAGRAM (P)	17	27APR01A	25MAY01	08MAY01	-13	80								
AA (HRSG) - LEVEL SETTING DIAGRAM (P) REMOVE IS NOT YET FOR MARCH															
AB - MAIN STEAM															
4DABEJ-170	AB (MAIN STEAM) - INSTRUMENT LOCATION (D)	58	14FEB01A	31AUG01	31AUG01	0	30								
AB (MAIN STEAM) - INSTRUMENT LOCATION (D)															
AD - CONDENSATE															
4DADEJ-170	AD (COND WTR) - INSTRUMENT LOCATION (D)	0	01MAY01A	02MAY01A	11MAY01	7	100								
AD (COND WTR) - INSTRUMENT LOCATION (D)															
4EADCEJ-180	AD (COND WTR) - LEVEL SETTING DIAGRAM (P)	17	27APR01A	25MAY01	08MAY01	-13	60								
AD (COND WTR) - LEVEL SETTING DIAGRAM (P) REMOVE IS NOT YET FOR MARCH															
AE - FEEDWATER															
4DAEEJ-170	AE (FEED WTR) - INSTRUMENT LOCATION (D)	81	19FEB01A	24AUG01	31AUG01	2	50								
AE (FEED WTR) - INSTRUMENT LOCATION (D)															
AJ - CHEM FEED															
4DAJEJ-180	AJ (CHEM FEED) - LEVEL SETTING DIAGRAM (D)	4	15JAN01A	04MAY01	04MAY01	0	60								
AJ (CHEM FEED) - LEVEL SETTING DIAGRAM (D) THIS WILL BE SCHEDULED ON THE EVENT, WORKS SCHEDULED AT 100% WORKER SCHEDULE WILL BE REVIEWED															
4DAJEJ-170	AJ (CHEM FEED) - INSTRUMENT LOCATION (D)	21	19MAY01A	31MAY01	31MAY01	0	40								
AJ (CHEM FEED) - INSTRUMENT LOCATION (D)															
EY - MAIN GENERATION															
4EYDEJ-310	EY02 (PWR LINE RTU-PNL) - PREP DATA SHTSPEC (F)	12	06MAY01A	16MAY01		0	0								
EY02 (PWR LINE RTU-PNL) - PREP DATA SHTSPEC (F) NO COMP TO SWITCH-TASK 11 11 22AM FOR GPT															
FG - FUEL GAS															
4DFGEJ-180	FG (FUEL GAS) - LEVEL SETTING DIAGRAM (D)	0	18OCT00A	10MAY01A	08MAY01	5	100								
FG (FUEL GAS) - LEVEL SETTING DIAGRAM (D)															
4DFGEJ-170	FG (FUEL GAS) - INSTRUMENT LOCATION (D)	47	03MAY01A	06JUL01	06JUL01	0	30								
FG (FUEL GAS) - INSTRUMENT LOCATION (D)															
6/9/01															
6/9/01															
6/9/01															
6/9/01															
6/9/01															
6/9/01															
6/9/01															
6/9/01															
6/9/01															
6/9/01															
6/9/01															
6/9/01															
6/9/01															
6/9/01															
6/9/01															
6/9/01															
6/9/01															
6/9/01															
6/9/01															
6/9/01															
6/9/01															
6/9/01															
6/9/01															
6/9/01															
6/9/01															
6/9/01															
6/9/01															
6/9/01															
6/9/01															
6/9/01															
6/9/01															
6/9/01															
6/9/01															
6/9/01															
6/9/01															
6/9/01															
6/9/01															
6/9/01															
6/9/01															
6/9/01															
6/9/01															
6/9/01															
6/9/01															
6/9/01															
6/9/01															
6/9/01															
6/9/01															
6/9/01															
6/9/01															
6/9/01															
6/9/01															
6/9/01															
6/9/01															
6/9/01															
6/9/01															
6/9/01															
6/9/01															
6/9/01															
6/9/01															
6/9/01															
6/9/01															
6/9/01															
6/9/01															
6/9/01															
6/9/01															
6/9/01															
6/9/01															
6/9/01															
6/9/01															
6/9/01															
6/9/01															
6/9/01															
6/9/01															
6/9/01															
6/9/01															
6/9/01															
6/9/01															
6/9/01															
6/9/01															
6/9/01															
6/9/01															
6/9/01															
6/9/01															
6/9/01															
6/9/01															
6/9/01															
6/9/01															
6/9/01															
6/9/01															
6/9/01															
6/9/01															
6/9/01															
6/9/01															
6/9/01															
6/9/01															
6/9/01															
6/9/01															
6/9/01															
6/9/01															
6/9/01															
6/9/01															
6/9/01															
6/9/01															
6/9/01															
6/9/01															
6/9/01															
6/9/01															
6/9/01															
6/9/01															
6/9/01															
6/9/01															
6/9/01															
6/9/01															
6/9/01															
6/9/01															
6/9/01															
6/9/01															
6/9/01															
6/9/01															
6/9/01															
6/9/01															
6/9/01															
6/9/01															
6/9/01															
6/9/01															
6/9/01															
6/9/01															
6/9/01															
6/9/01															
6/9/01															
6/9/01															
6/9/01															
6/9/01															
6/9/01															
6/9/01															
6/9/01															
6/9/01															
6/9/01															
6/9/01															
6/9/01															
6/9/01															
6/9/01															
6/9/01															
6/9/01															
6/9/01															
6/9/01															
6/9/01															
6/9/01															
6/9/01															
6/9/01															
6/9/01															
6/9/01															
6/9/01															
6/9/01															
6/9/01															
6/9/01															
6/9/01															
6/9/01															
6/9/01															
6/9/01															
6/9/01															
6/9/01															
6/9/01															
6/9/01															
6/9/01															
6/9/01															
6/9/01															
6/9/01															
6/9/01															
6/9/01															
6/9/01															
6/9/01															
6/9/01															
6/9/01															
6/9/01															
6/9/01															
6/9/01															
6/9/01															
6/9/01															
6/9/01															
6/9/01															
6/9/01															
6/9/01															
6/9/01															
6/9/01															
6/9/01															
6/9/01															
6/9/01															
6/9/01															
6/9/01															
6/9/01															
6/9/01															
6/9/01															
6/9/01															
6/9/01															
6/9/01															
6/9/01															
6/9/01															
6/9/01															
6/9/01															
6/9/01															
6/9/01															
6/9/01															
6/9/01															
6/9/01															
6/9/01															
6/9/01															
6/9/01															
6/9/01															
6/9/01															
6/9/01															
6/9/01															
6/9/01															
6/9/01															
6/9/01															
6/9/01															
6/9/01															
6/9/01															
6/9/01															
6/9/01															
6/9/01															
6/9/01															
6/9/01															
6/9/01															
6/9/01															
6/9/01															
6/9/01															
6/9/01															
6/9/01															
6/9/01															
6/9/01															
6/9/01															
6/9/01															
6/9/01															
6/9/01															
6/9/01															
6/9/01															
6/9/01															
6/9/01															
6/9/01															
6/9/01															
6/9/01															
6/9/01															
6/9/01															
6/9/01															
6/9/01															
6/9/01															
6/9/01															
6/9/01															
6/9/01															
6/9/01															
6/9/01															
6/9/01															
6/9/01															
6/9/01															
6/9/01															
6/9/01															
6/9/01															
6/9/01															
6/9/01															
6/9/01															
6/9/01															
6/9/01															
6/9/01															
6/9/01															
6/9/01															
6/9/01															
6/9/01															
6/9/01															
6/9/01															
6/9/01															
6/9/01															
6/9/01															
6/9/01															
6/9/01															
6/9/01															
6/9/01															
6/9/01															
6/9/01															
6/9/01															
6/9/01															
6/9/01															
6/9/01															
6/9/01															
6/9/01															
6/9/01															
6/9/01															
6/9/01															
6/9/01															
6/9/01															
6/9/01															
6/9/01															
6/9/01															
6/9/01															
6/9/01															
6/9/01															
6/9/01															
6/9/01															
6/9/01															
6/9/01															
6/9/01															
6/9/01															
6/9/01															
6/9/01															
6/9/01															
6/9/01															
6/9/01															
6/9/01															
6/9/01															
6/9/01															
6/9/01															
6/9/01															

3/8/2002

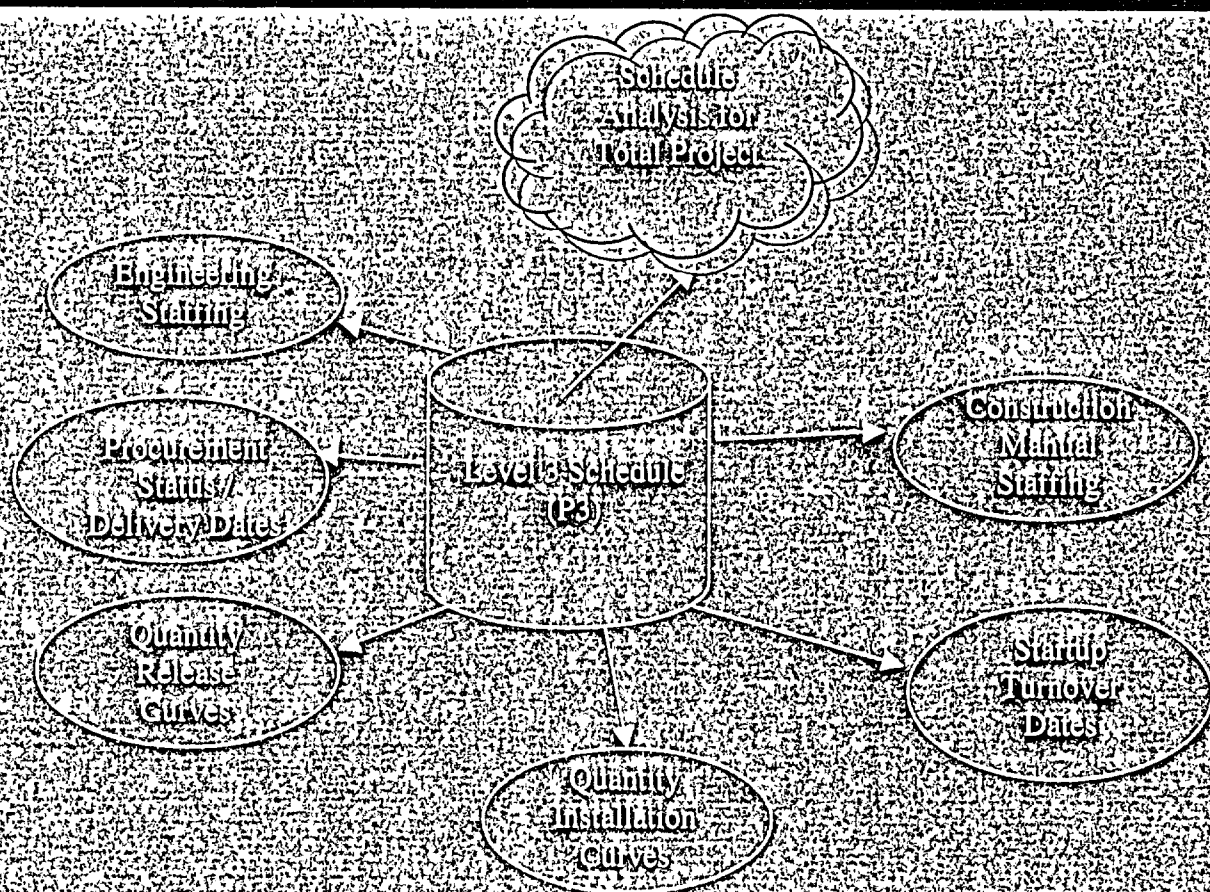
Bachtel Scheduling Overview

111





# Level 3 Schedule



3/8/2002

Bechtel Scheduling Overview

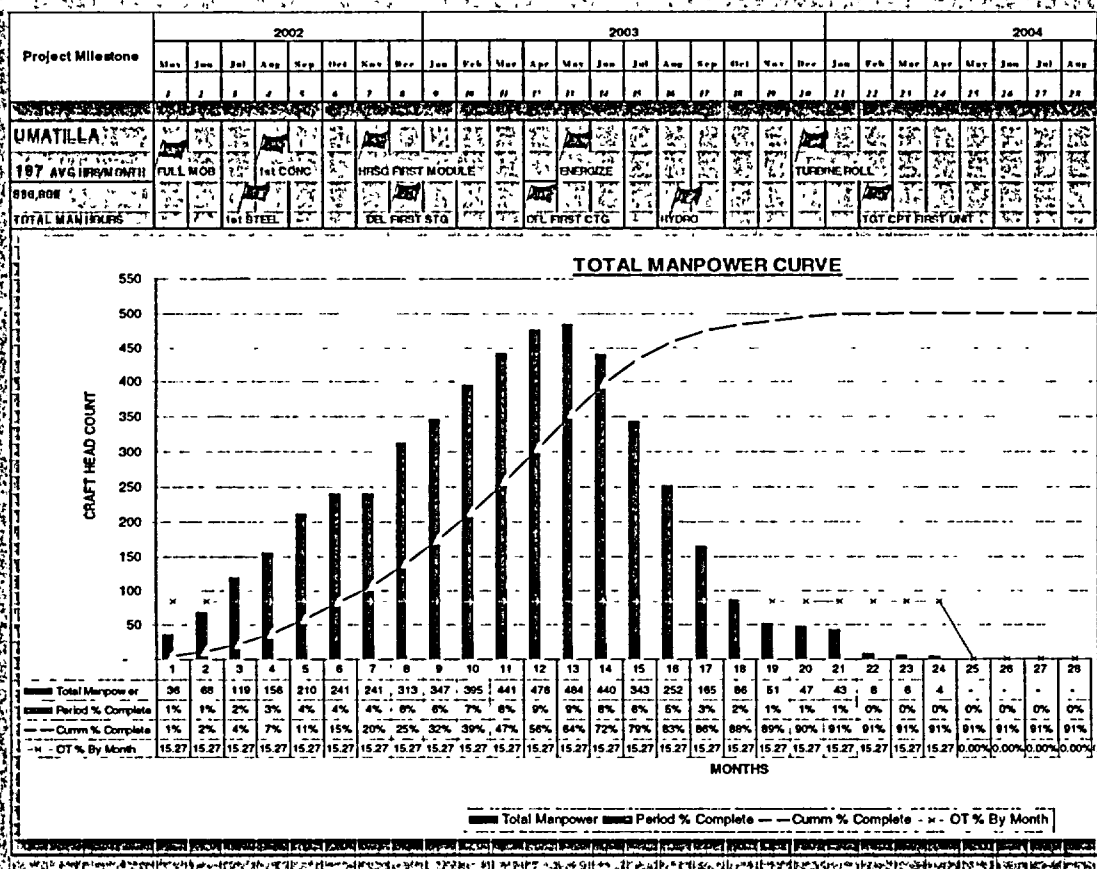
16

# Comparisons and Validation

- Manpower Curves: look at percent of peak staffing as a percent of time compared to other similar projects.
- Qty Comparison: Review installation rates and overall duration to other similar projects.
- Sustain Rates and Bulk commodity percent installed at major milestone to other projects.
- Compare key milestone dates and duration to other similar projects.



# Total Manpower



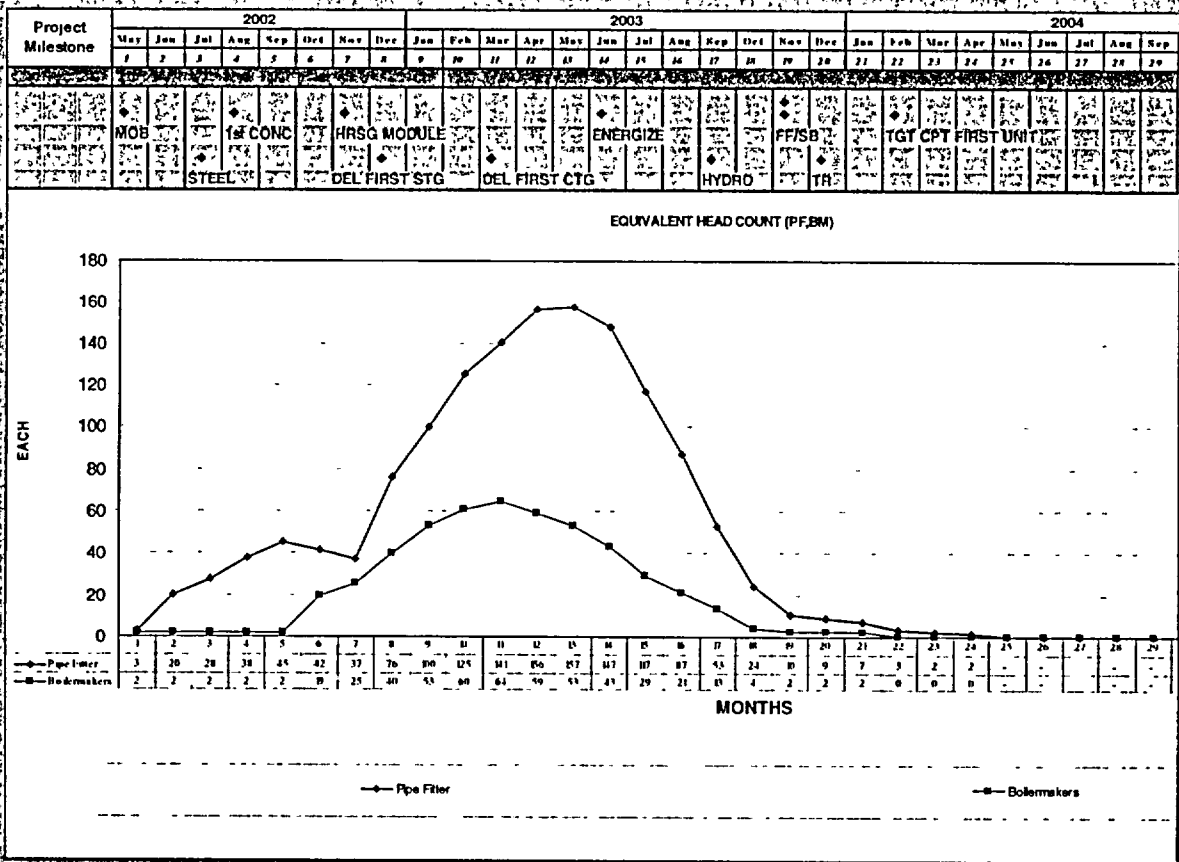
8/8/2002

Bechtel Scheduling Overview

16



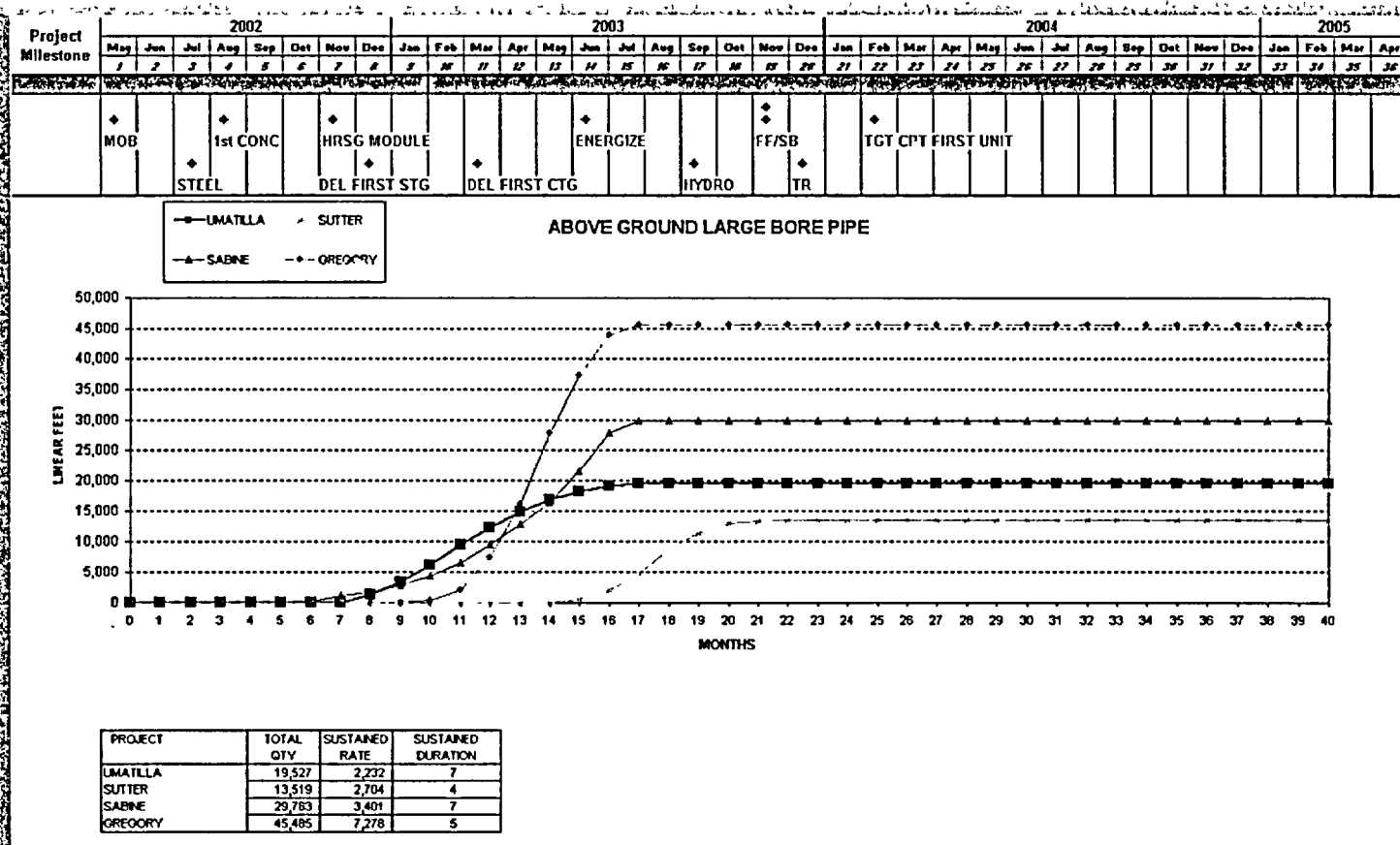
# Manual Craft Curves



8/8/2002

Bedford Scheduling Overview

# Bulk Commodity Comparison Curves



8/18/2002

Bechtel Scheduling Overview

11/

# Sustain Rate & Bulk % Complete Comparison

Units: UMATILLA AVG		Actual				Actual / Forecast			
		Hermiston	Reno	Millennium	Gregory	Butte	Delta	Sabine	
		Fig Book 1/1/01	Fig Book 1/1/01	Fig Book 1/1/01	Fig Book 1/1/01	Update from Project > 8/30/01	Fig Book 1/1/01	Fig Book 1/1/01	
<b>A. SUSTAINED RATE COMPARISON</b>									
CONCRETE	TY	1,455	1,558	1,536	957	2,229	947		
STEEL	TY	1,723	128	312	79	112	93		
U/G LB PIPE	LF	3,614	2,487	N/A	1,058	5,421	630		
A/G LB PIPE	LF	2,303	1,255	1,051	1,058	9,078	8,749		
SB PIPE	LF	3,227	3,402	2,837	1,852	17,090	4,130		
HANGERS	EA	203	N/A	N/A	N/A	N/A	202		
TRAY	LF	1,522	1,658	1,012	1,848	1,847	819		
A/G CONDUIT	LF	2,267	4,568	14,581	2,856	12,303	4,090		
U/G CONDUIT	LF	4,055	N/A	3,580	4,829	10,802	N/A		
CABLE	LF	87,005	108,220	62,576	51,954	61,579	73,272		
TERMINATION	EA	6,068	4,815	N/A	2,122	5,873	3,782		
Note:									
1. All rates are stated in English Units									
2. Large bore pipe sustained rate excludes vendor supplied pipe									
3. Sabine rates are for the LSTK scope of work only									
4. Delta concrete BR excludes area slab which are scheduled very late in the project									
5. Shaded projects have not been added to the average									
<b>B. BULK CURVE QTY % COMPLETE AT START BOILER/HRSG ERECTION (1st MODULE)</b>									
CONCRETE		89%	77%	70%	92%	75%	80%	75%	
STEEL		28%	36%	58%	65%	6%	30%	22%	
<b>C. BULK CURVE QTY % COMPLETE AT HYDRO</b>									
U/G LB PIPE		100%	100%	100%	100%	100%	100%	100%	
A/G LB PIPE		91%	94%	100%	99%	99%	100%	100%	
SB PIPE		79%	100%	100%	99%	92%	100%	99%	
HANGERS		N/A							
<b>D. BULK CURVE QTY % COMPLETE AT ENERGIZATION</b>									
TRAY		89%	94%	100%	96%	100%	100%	75%	
A/G CONDUIT		89%	94%	100%	96%	100%	100%	75%	
U/G CONDUIT		N/A	71%	70%	88%	90%	100%	58%	
CABLE		84%	84%	70%	88%	90%	100%	75%	
TERMINATION		63%	20%	45%	26%	72%	26%	10%	
Note:									
1. Delta % has not been included because a system turnover occurring earlier due to Calpine Start Up.									

8/8/2002

Bechtel Scheduling Overview

18



# Milestone Comparison

PROJECT NAME REGION LOCATION CONFIGURATION	Project A N America 1x1x1 0	Project B N America 1x1x1 0	Project C N America 1x1x1 0	Project D N America 1x1x1 0
MILESTONE				
DURATION BETWEEN MILESTONES:				
START DETAIL ENGINEERING - MOBILIZATION	27	63	99	68
MOBILIZATION - FIRST STRUCTURAL CONCRETE	40	35	15	49
CTG AWARD - DELIVERY OF 1st CTG	119	174	147	195
CTG ERECTION - TURBINE ROLL	116	84	92	111
CTG ERECTION - FIRST FIRE	106	74	81	101
FIRST FIRE - START PERFORMANCE TEST	20	17	22	12
STG AWARD - DELIVERY OF 1st STG	134	136	148	233
STG ERECTION - TURNING GEAR	72	106	63	93
STG ERECTION - TURBINE ROLL	82	112	76	104
HRSG AWARD - DELIVERY OF PRESSURE PARTS	98	126	116	183
HRSG MODULE ERECTION - HYDRO	87	49	73	126
HRSG MODULE ERECTION - FIRST STEAM BLOW	112	109	92	137
START HYDRO - START CLEANING/BOILOUT	10	44	10	07
START HYDRO - FIRST FIRE	26	60	19	11
CHEMICAL CLEAN - STEAM BLOW	16	15	09	05
START STEAM BLOW - TURBINE ROLL	10	10	11	10
ENERGIZATION - STG TURBINE ROLL	46	51	51	62
START PIPING AVG - STG TURBINE ROLL	113	139	115	152
START RACEWAY - STG TURBINE ROLL	105	134	117	141
START CABLE - STG TURBINE ROLL	96	118	90	132
STG TURBINE ROLL - START PERFORMANCE TEST	10	07	11	01
START PERFORMANCE TEST - COMPLETION (See Note)	10	14	12	17
TARGET - GUARANTEED COMPLETION	34	30	00	20
MOBILIZATION - COMPLETION (See Note)	213	218	187	301
NTP - COMPLETION (See Note)	218	140	187	283
FIRST CONCRETE - COMPLETION (See Note)	173	183	171	252



# TEAMWORKS

## • Purpose:

- TEAMWORKS™ provides engineering, procurement, construction, project management and startup with a database management system to track and support the status of equipment and materials. Access is provided in the Edit mode or View mode. The data managed by the TEAMWORKS™ database is stored in the form of horizontal records, which can have one or many columns or fields to hold the data.
- The TEAMWORKS™ application manages the following general types of information: mechanical equipment, electrical equipment, piping lines, pipe spools, hangers, welds, valves, specialty items and structural steel.

# TEAMWORKS

## • Statusing:

- TEAMWORKS™ uses milestone-based statusing for commodities.

- The user enters milestone dates against a line item, then an internal calculation is performed to determine the percentage complete and the equivalent quantity-to-date credit for that line item.

- The user can then generate summaries to report the status of the line items.





## Edit Table

	Lines
	Spools
	Bulk Pipe
	Welds
	Valves
	Hangers
	Specialty Items
	Vents and Drains
	Instruments
	Equipment
	Steel
	Cives Steel

OK

Cancel

Help

☐ Filter/Sort☐ Record Mode

Add

Delete

Edit

Copy

Reload

Ready



TEAMWORKS

TEAMWORKS (TEAMWORKS Version: 1.03 24600 Project) [Edit Spools]

File Edit View Reports Tools Apps Window Help

Technical Packaging Status

Tag No	Delivery	Stage Date	Fabrication Date	ELT Date	Punch Compl Date	Percent Complete	Quantity To Date
210-PS-VAG-66-1411	06/09/02	06/09/02	06/09/02	06/09/02		80.00	4.0
210-PS-VAG-600-1411	03/13/02	06/09/02	06/09/02	06/30/02	07/21/02	100.00	5.7
210-PS-VAG-601-1411	03/13/02	06/09/02	06/09/02	06/30/02	07/21/02	100.00	6.0
210-PS-VAG-602-1411	03/13/02	06/09/02	06/09/02	06/30/02	07/21/02	100.00	4.7
210-PS-VAG-603-1411	03/13/02	06/09/02	06/09/02	06/30/02	07/21/02	100.00	4.4
210-PS-VAG-604-1411	03/13/02	06/09/02	06/09/02	06/30/02	07/21/02	100.00	3.6
210-PS-VAG-605-1411	03/13/02	06/09/02	06/09/02	06/30/02	07/21/02	100.00	3.8
210-PS-VAG-606-1411	03/13/02	06/09/02	06/09/02	06/30/02	07/21/02	100.00	3.8
210-PS-VAG-607-1411	03/13/02	06/09/02	06/09/02	06/30/02	07/21/02	100.00	4.2
210-PS-VAG-608-1411	03/13/02	06/09/02	06/09/02	06/30/02	07/21/02	100.00	4.2
210-PS-VAG-609-1411	06/09/02	06/09/02	06/09/02	06/09/02	07/21/02	100.00	4.0
210-PS-VAG-610-1411	03/13/02	06/09/02	06/09/02	06/09/02	07/21/02	100.00	9.0
210-PS-VAG-611-1411	03/13/02	06/09/02	06/09/02	06/09/02	07/21/02	100.00	9.0
210-PS-VAG-612-1411	03/13/02	06/09/02	06/09/02	06/09/02	07/21/02	100.00	9.0
210-PS-VAG-613-1411	03/13/02	06/09/02	06/09/02	06/09/02	07/21/02	100.00	9.0
210-PS-VAG-614-1411	03/13/02	06/09/02	06/09/02	06/09/02	07/21/02	100.00	9.0
210-PS-VAG-615-1411	03/13/02	06/09/02	06/09/02	06/09/02	07/21/02	100.00	9.0
210-PS-VAG-616-1411	06/09/02	06/09/02	06/09/02	06/09/02	07/21/02	100.00	8.0
210-PS-VAG-617-1411	06/09/02	06/09/02	06/09/02	06/09/02	07/21/02	100.00	8.0
210-PS-VAG-618-1411	06/09/02	06/09/02	06/09/02	06/09/02	07/21/02	100.00	8.0

OK

Close

Seek

Refresh

Help

Export

RecordView

Ready

1 of 10750

3/21/2002

Boehle Scheduling Overview



## Partial Quantity Credit For Spools

Credit Calculation Name

DEFAULT

Select Calculation Method

☐ Method 1 - Manual Entry

Enter Percent Complete In Table

Calculate Quantity To Date

☐ Method 2 - Sequenced Milestones

Enter Milestone Completion Date In Table

Calculate Percent Complete

Calculate Quantity To Date

☒ Method 3 - Non-Sequenced Milestones

Enter Milestone Completion Date In Table

Calculate Percent Complete

Calculate Quantity To Date

Data Fields Used For Calculation

Select Fields For:

Total (Design) Quantity

CLENGTH

Percent Complete

PCNTCOMPL

Quantity to Date

QTYTODATE

Conversion Factor

3.994324894063

OK

Close

☐ Hide

Milestones For Earning Partial Credit

Field Name

Percentage

STAGE

10

FABDATE

35

ELTDATE

35

INSTALLED

20

Total %

100

Filter

Edit Filter

Ready

Preview

08/20/02 1:45:47 PM Percent Complete Summary Page 1  
TEAMWORKS v1.4.1

TEAMWORKS Version 1.02 21600 Project

Selection criteria ((SPOOL.DIAMETER = SPLCOST.DIAMETER (+)) AND  
(SPOOL.CLASS = SPLCOST.CLASS (+)) AND (SPOOL.ABU BEL RACK =  
SPLCOST.ABU BEL RACK (+)) AND (SPOOL.VENDSUPL = SPLCOST.VENDSUPL (+)) AND  
SPOOL.DELETED=0

Center-Line Length Complete	Percent Complete	Quantity To Date
84470.38	0	0.0
6949.24	10	694.9
5.90	25	2.4
5518.27	45	2482.2
27265.91	80	29892.5
2672.41	100	2672.4
137985.11		36747.3

\*\*\* END OF REPORT \*\*\*

Print

Close

Zoom

Whole Page

Page 1 of 1

8/21/2002

Bechtel Scheduling Overview



08/11/02 9:15:59 AM  
TEAMWORKS v1.4.1

Percent Complete by System

Page 1

TEAMWORKS Version 1.01 210000 Pre-test

Selection criteria: ((SPOOL DIAMETER = SPLCOST DIAMETER (+)) AND (SPOOL CLASS = SPLCOST CLASS (+)) AND (SPOOL ABU\_REL\_BACK = SPLCOST ABU\_REL\_BACK (+)) AND (SPOOL VENDSUPL = SPLCOST VENDSUPL (+))) AND SPOOL DELETED="N"

Bechtel Tag	Wahl	Center-Line	Stage	Fabrication	ELT	Purch Compl	Percent	Quantity	Pipe Inst
Sys Loc No	Diameter (Class)	Length	Date	Date	Date	Date	Complete	To Date	To Date
Bechtel Sys Loc: AB									
AB 210-PS-AB-001-1111	11.00 SLD	27 59	1 07/21/02	07/21/02			45 00	12 4 15.134	
AB 210-PS-AB-002-1111	11.00 SLD	27 51	1 02/17/02	06/05/02	06/12/02		00 00	12 0 15.134	
AB 210-PS-AB-003-1111	11.00 SLD	41 44	1 02/17/02	07/01/02	07/22/02		00 00	14 0 15.134	
AB 210-PS-AB-004-1111	11.00 SLD	13 59	1 02/17/02	07/01/02	04/14/02		00 00	11 0 15.134	
AB 210-PS-AB-005-1111	11.00 SLD	19 52	1 02/17/02	07/01/02	04/12/02		00 00	15 7 15.134	
AB 210-PS-AB-006-1111	11.00 SLD	21 75	1 03/21/02	04/01/02	04/12/02		00 00	20 5 15.134	
AB 210-PS-AB-007-1111	11.00 SLD	22 74	1 03/21/02	04/01/02	04/12/02		00 00	27 0 15.134	
AB 210-PS-AB-008-1111	11.00 SLD	13 51	1 04/12/02				10 00	1 5 15.134	
AB 210-PS-AB-009-1111	10.00 SLD	14 37	1 02/17/02	07/01/02	04/14/02		00 00	11 5 15.134	
AB 210-PS-AB-010-1111	10.00 SLD	12 94	1 05/05/02	07/14/02	07/12/02		00 00	11 2 15.134	
AB 210-PS-AB-011-1111	16.00 CSH	19 11	1 02/16/02	07/01/02	03/17/02		00 00	15 4 15.141	
AB 210-PS-AB-012-1111	16.00 CSH	4 98	1 02/16/02	07/01/02	03/17/02		00 00	4 0 15.141	
AB 210-PS-AB-013-1111	20.00 SFD	20 55	1 04/12/02	07/22/02			45 00	13 0 15.154	
AB 210-PS-AB-014-1111	20.00 SFD	23 61	1 04/12/02	07/22/02	07/22/02		00 00	27 0 15.154	
AB 210-PS-AB-015-1111	20.00 SFD	20 31	1 02/12/02	07/01/02	04/12/02		00 00	16 7 15.154	
AB 210-PS-AB-016-1111	20.00 SFD	42 87	1 03/17/02	07/17/02	03/17/02		00 00	35 1 15.154	
AB 210-PS-AB-017-1111	20.00 SFD	17 10	1 02/17/02	07/01/02	03/12/02		00 00	13 7 15.154	
AB 210-PS-AB-018-1111	20.00 SFD	27 38	1 07/02/02	07/04/02	03/17/02		00 00	21 9 15.154	
AB 210-PS-AB-019-1111	20.00 SFD	28 57	1 03/02/02	07/04/02	03/14/02		00 00	22 5 15.154	
AB 210-PS-AB-020-1111	20.00 SFD	22 71	1 04/12/02	04/21/02	04/12/02		00 00	25 2 15.154	
AB 210-PS-AB-021-1111	20.00 SFD	8 75	1 04/12/02	04/21/02	05/19/02		00 00	7 0 15.154	
AB 210-PS-AB-022-1111	20.00 SFD	29 31	1 02/17/02	07/01/02	05/05/02		00 00	23 4 15.154	
AB 210-PS-AB-023-1111	20.00 SFD	12 55	1 02/17/02	07/01/02	04/07/02		00 00	10 0 15.154	
AB 210-PS-AB-024-1111	20.00 SFD	6 89	1 04/07/02	04/07/02	04/07/02		00 00	6 5 15.154	
AB 210-PS-AB-025-1111	12.00 C1D	24 81	1 03/24/02	04/01/02	05/05/02		00 00	19 0 15.131	
AB 210-PS-AB-026-1111	12.00 C1D	11 77	1 03/24/02	04/01/02	05/05/02		00 00	5 4 15.131	
AB 210-PS-AB-027-1111	12.00 C1D	29 07	1 02/16/02	07/01/02	04/14/02		00 00	23 7 15.131	
AB 210-PS-AB-028-1111	12.00 C1D	14 40	1 02/16/02	07/01/02	04/14/02		00 00	12 4 15.131	
AB 210-PS-AB-029-1111	12.00 C1D	14 27	1 02/17/02	07/01/02	04/14/02		00 00	12 4 15.131	
AB 210-PS-AB-030-1111	12.00 C1D	27 37	1 02/17/02	07/01/02	05/05/02		00 00	29 9 15.131	
AB 210-PS-AB-031-1111	12.00 C1D	30 11	1 02/17/02	07/01/02	03/12/02		00 00	24 2 15.131	
AB 210-PS-AB-032-1111	12.00 C1D	11 05	1 02/17/02	07/01/02	03/12/02		00 00	5 6 15.131	
AB 210-PS-AB-033-1111	12.00 C1D	9 61	1 03/02/02				10 00	1 0 15.131	
AB 210-PS-AB-034-1111	12.00 C1D	6 16	1				0 00	0 0 15.131	
AB 210-PS-AB-035-1111	12.00 C1D	9 92	1				0 00	0 0 15.131	
AB 210-PS-AB-036-1111	20.00 CSH	12 07	1 05/05/02	05/05/02	06/16/02		00 00	11 1 15.151	
AB 210-PS-AB-037-1111	20.00 CSH	7 71	1 05/26/02	06/01/02	06/16/02		00 00	6 2 15.151	
AB 210-PS-AB-038-1111	20.00 CSH	4 11	1 05/26/02	06/01/02	06/16/02		00 00	3 4 15.151	
AB 210-PS-AB-039-1111	20.00 CSH	17 95	1 02/16/02	07/01/02	03/10/02		00 00	14 4 15.151	
AB 210-PS-AB-040-1111	20.00 CSH	23 81	1 03/02/02	07/03/02	03/03/02		00 00	25 4 15.151	
AB 210-PS-AB-041-1111	20.00 CSH	15 94	1 03/16/02	07/10/02	03/10/02		00 00	11 2 15.151	
AB 210-PS-AB-042-1111	20.00 CSH	22 56	1 02/16/02	07/01/02	03/12/02		00 00	26 9 15.151	
AB 210-PS-AB-043-1111	20.00 CSH	19 99	1 02/16/02	07/01/02	04/12/02		00 00	16 0 15.151	
AB 210-PS-AB-044-1111	20.00 CSH	21 79	1 02/16/02	07/01/02	04/12/02		00 00	25 4 15.151	
AB 210-PS-AB-045-1111	20.00 CSH	20 18	1 04/22/02	05/01/02	05/12/02		00 00	16 1 15.151	
AB 210-PS-AB-046-1111	20.00 CSH	6 30	1 04/22/02	05/01/02	05/12/02		00 00	5 0 15.151	
AB 210-PS-AB-047-1111	20.00 CSH	4 57	1 04/22/02	05/01/02	05/05/02		00 00	3 7 15.151	
AB 210-PS-AB-048-1111	6.00 CSH	18 47	1 06/22/02	06/23/02	06/22/02		00 00	14 7 15.112	

Page 1 of 223

6/21/2002

Bechtel Scheduling Overview

7

# Setroute

## • Purpose:

- Setroute™ provides engineering, procurement, construction, project management and startup with a database management system to track and support the status of electrical commodities. Access is provided in the Edit mode or View mode. The data managed by the Setroute™ database is stored in the form of horizontal records, which can have one or many columns or fields to hold the data.
- The Setroute™ application manages the following general types of information: cable, raceway, terminations, jumpers, and equipment.

# Setroute

## • Statusing:

- Setroute™ Uses code-based statusing of commodities.
- Engineering will release the line item to the jobsite, changing the primary status to a "J". The primary status will be updated to a "C" when Construction of the line item is complete.
- A Construction Status field is used to provide intermediate statuses of the line item during construction.
- The user can then generate summaries to report the status of the line items.



Setroute

SETROUTE REDBUD ENERGY PROJECT

File View Report Tools Window Help



Open Table

	Cables	<input type="button" value="OK"/>
	Raceways	<input type="button" value="Cancel"/>
	Equipment	<input type="button" value="Help"/>
	Jumpers	
	Terminations	
	Cable Routes	
	Blocks and Points	
	Cable Codes	
	Raceway Codes	
	Equipment Codes	
	Color Codes	
	Cable Reels	

Ready

CAPS 9:37 AM

8/27/2002

Bechtel Scheduling Overview

10

setroute

**SETROUTE - REDBUD ENERGY PROJECT**

File Edit View Report Tools Window Help

**Cable 210AA11AXG**

ID: 210AA11AXG Card Rev.

Status: Primary: ☒ J Const: ☐ Hold: ☐

Length: Pre: 0.00 Eng: 214.00 Act: 0.00

Last Revision: 08/20/02 1:56:16 PM MC

OK Close Help

☐ Data ☒ Misc

Number of Cables:	1	Preliminary Lgth:	0.00
Cables per Bundle:	1	Separation Group:	
Cable Code:	FKA	Safety Code:	
Service Level:	X	Revision:	
Add'l Serv Level:		Facility:	
Secondary Status:		System:	AA
Drawing Number:	000-E6-AA-011	Start-up System:	21AA01
FROM Equipment:	210AATE353	TO Equipment:	210DJD101C

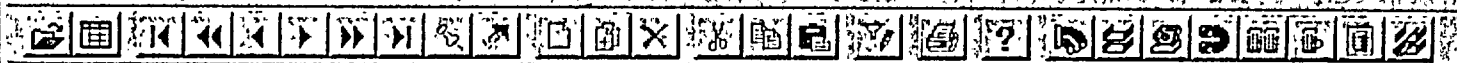
Terms... Route... Notes... Reels...

Ready FILTER CAPS 10.47 AM

8/21/2002

Bechtel Scheduling Overview

7/1



### Jobsite Feedback

☒ Cable
 ☐ Raceway
 ☐ Equipment
 ☐ Jumper
 ☐ Termination

ID: 210AA03ASA

Number of Cables: 1

Cable Code: A79

Engineering Lgth: 167.00

Cut Length: 210.00

Construction Status:

3 - Turned Over For Testing

Installed Length:

Megger Device:

- 0 - Cable Cut From Reel
- 1 - Partially Installed
- 2 - Installed (Not Inspected)
- 3 - Turned Over For Testing
- 4 - Testing Complete
- 5 - Released To Start-Up
- 6 - Start-Up Check Complete
- 7 - Turned Over To Client

Save

Close

Help

Edit

Ready

CAPS 10.49 AM



