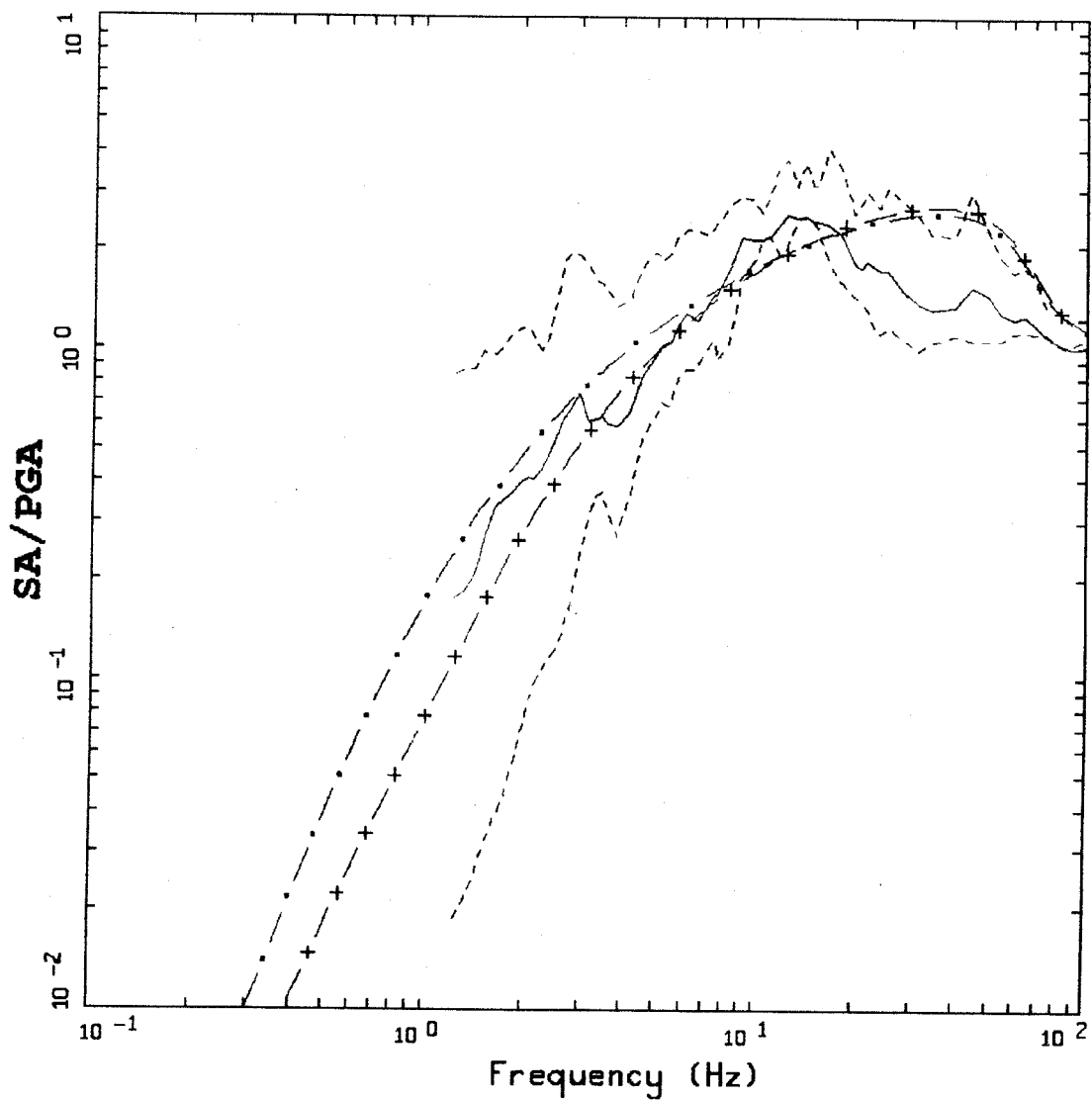


POINT-SOURCE MODEL  
 $M = 6.5$ ,  $R = 25$  KM

LEGEND

—	WUS ROCK, SINGLE CORNER
....	WUS ROCK, DOUBLE CORNER
- - -	CEUS ROCK, SINGLE CORNER
- . - .	CEUS ROCK, DOUBLE CORNER

Figure 1. A comparison of Central Eastern United States [CEUS] spectral shapes computed from numerical modeling versus the comparable Western United States [WUS] spectral shapes generated from the empirical data base.



AVERAGE HORIZONTAL SPECTRA, CEUS  
 $M=5 \frac{1}{4}$ ,  $R=0-25$  KM, ROCK

- LEGEND
- 50TH PERCENTILE
  - - - MINIMUM ENVELOPE
  - - - MAXIMUM ENVELOPE
  - . - CEUS SINGLE CORNER MODEL
  - + - CEUS DOUBLE CORNER MODEL

Figure 2. A comparison of the model predictions with respect to small magnitude CEUS recordings.

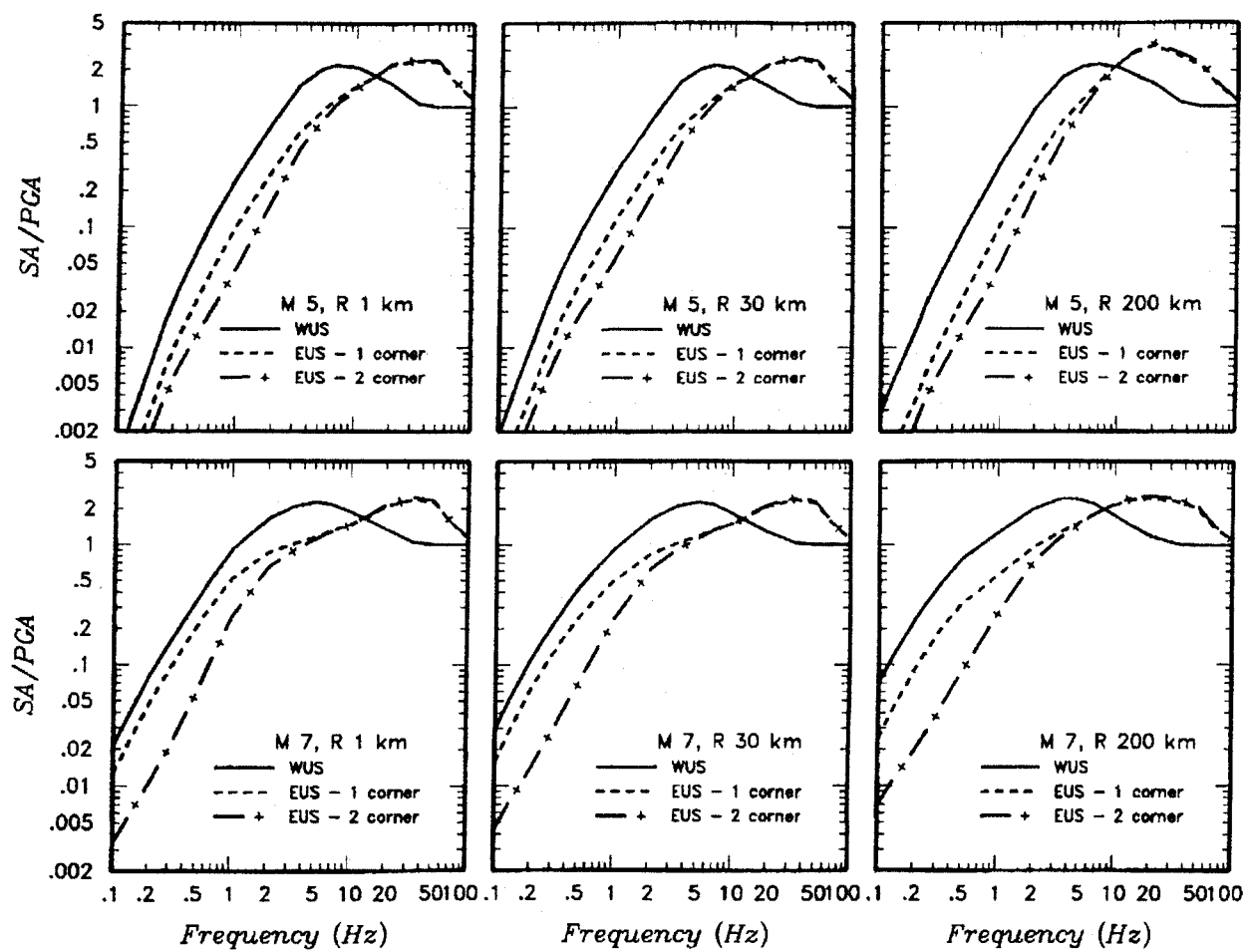


Figure 3. Recommended spectral shapes by scaling WUS records to CEUS hard rock conditions.