



Kewaunee Nuclear Power Plant
N490 Highway 42
Kewaunee, WI 54216-9511
920 388 2560

Point Beach Nuclear Plant
6610 Nuclear Road
Two Rivers, WI 54241
920.755 2321

Kewaunee / Point Beach Nuclear
Operated by Nuclear Management Company, LLC

NRC 2002-0067

10 CFR 50.55a

August 15, 2002

U.S. Nuclear Regulatory Commission
ATTN: Document Control Desk
Washington, DC 20555

Ladies/Gentlemen:

Dockets 50-266 and 50-301
Point Beach Nuclear Plant, Units 1 and 2
Fourth Interval Inservice Inspection Program
Relief Request No. 10 Drawings

In accordance with IWA-1400(c) of the 98A00 Section XI ASME Code, Nuclear Management Company, LLC (NMC), licensee for the Point Beach Nuclear Plant (PBNP) Units 1 and 2, submitted the PBNP Fourth Interval Inservice Inspection (ISI) Program, Plan and Schedule on March 22, 2002.

Included in Appendix D of the submittal were several relief requests. Relief Request No. 10 requested an alternative to the requirement to examine all three vessels of the regenerative heat exchanger.

In a phone call with NRC on August 1, 2002, NRC informed PBNP staff that two attachments were missing from Relief Request No. 10. Page 111 of 115 of the submittal referenced two ISI drawings, ISI-PRI-1107 and ISI-PRI-2107, which were not attached.

In response, enclosed are the two missing drawings. PBNP would also like to submit two additional drawings that will further support your review of Relief Request No. 10, ISI drawings ISI-PRI-1203 and ISI-PRI-2203.

Sincerely,

Thomas J. Webb
Regulatory Affairs Manager

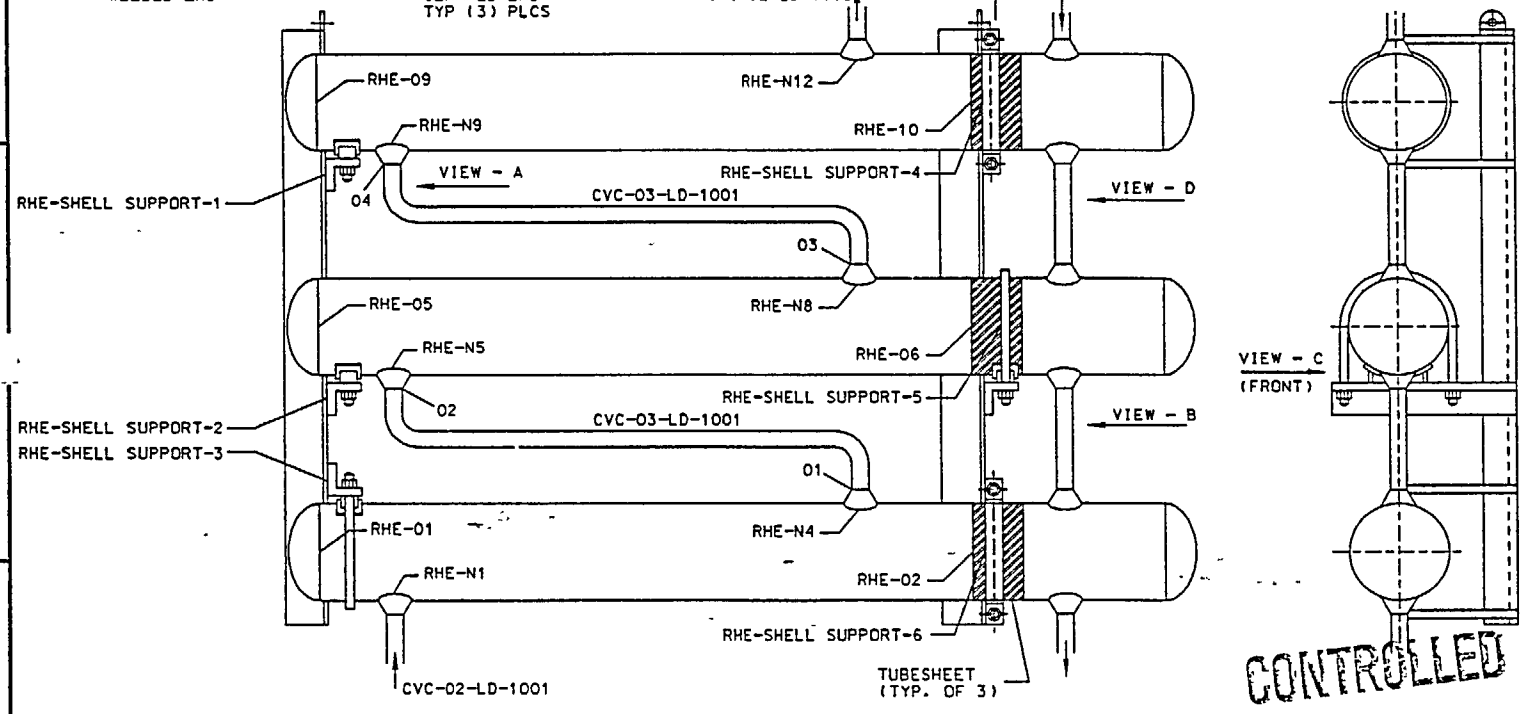
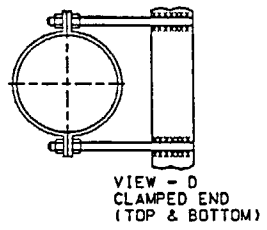
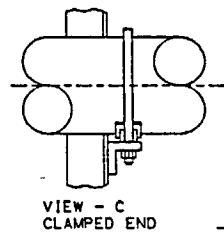
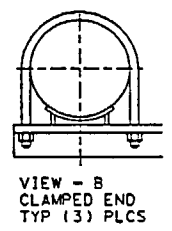
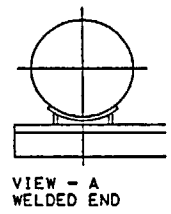
LAS/kmd

A047

- Attachments:
- 1 Wisconsin Electric ISI Drawing ISI-PRI-1107, Primary ISI Isometric PBNP Unit 1 Regenerative Heat Exchanger HX-2, Revision 5, dated January 27, 1996.
 - 2 Wisconsin Electric ISI Drawing ISI-PRI-1203, Primary ISI Isometric PBNP Unit 1 Regenerative Heat Exchanger HX-2, Revision 2, dated June 9, 1992.
 - 3 Wisconsin Electric ISI Drawing ISI-PRI-2107, Primary ISI Isometric PBNP Unit 2 Regenerative Heat Exchanger HX-2, Revision 4, dated August 2, 1995.
 - 4 Wisconsin Electric ISI Drawing ISI-PRI-2203, Primary ISI Isometric PBNP Unit 2 Regenerative Heat Exchanger HX-2, Revision 3, dated December 22, 1994.

cc: NRR Project Manager
NRC Resident Inspector (w/o enclosure)
NRC Regional Administrator (w/o enclosure)
PSCW (w/o enclosure)

B



DRAWING NOTES

1. ISI CLASS 1/CLASS 2 BREAK IS AT TUBESHEET.
2. EXCHANGER SPEC. SHEET: AH-RG503
3. TYPE: SHELL & U-TUBE
4. APPROX. DRY WT.: 4669 LBS.
5. APPROX. FLOODED WT.: 5451 LBS.
6. ALL COMPONENTS ON THIS DRAWING ARE INSULATED.

DCV
2-1198

LOCATION

BLDG.: CONTAINMENT
ROOM/AREA: RHE ROOM
ELEV.: 21'
HP AREA: 303E

REFERENCE DRAWINGS

REF. DWG.: SENTRY A04195-A01-2 & A01-3

DESIGN DATA

PIPE CLASS	DESIGN		OPERATING	
	*F	PSIG	*F	PSIG
SHELL	650	2485		
TUBE	650	2735		

COMP DIA	NOM THICK	MATERIAL	CAL STD
8.000	0.875	A376 TP304	17-PTB

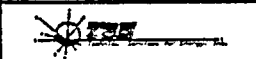
REVISIONS

REV NO.	ZONE	FRW. ID.	DATE	DESCRIPTION	DRAWN	CHK'D	APPR'D	REL'D
5			1-27-96	REVISED PER DCN # 95-2216 6409	SEV	DES	DES	
4			5-5-95	REVISED PER DCN # 95-0195 5673	JRB	DES	DES	
3			06/09/92	INCORPORATED INTO PDS REF. TRANS. SPR-DWG-92-062	PPL	PPL	DJM	
2			03/18/92	REVISED PER WALKDOWN	KTG	WAB	CTP	
1			07/29/91	REVISED FOR LTP UPGRADE	KTG	WAB	GRS	

MICROFORM NO. 273453
CADFILE NO. 46201

VENDOR: WISCONSIN ELECTRIC
T.F.I.: T1.5
MOD.: NONE

DRAWN	DATE	APPRV D	DATE
KRH	04/04/90		
JLV	05/17/90		
JJG	06/25/90		



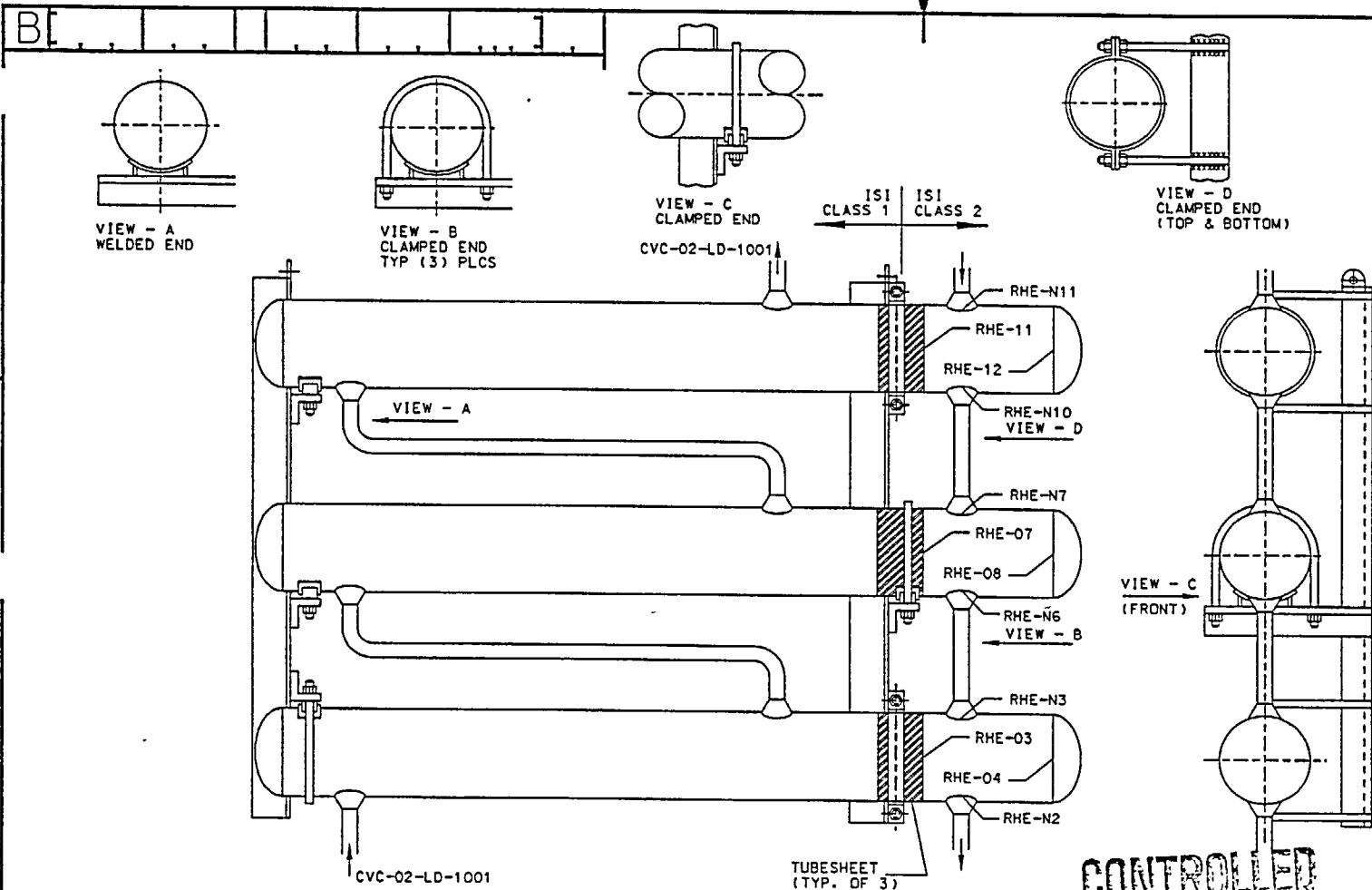
PRIMARY ISI ISOMETRIC
PBNP Unit 1
REGENERATIVE HEAT
EXCHANGER HX-2

DRAWING NO. ISI-PRI-1107

B | P | B | 0 | 1 | M | R | C | G | 1 | 0 | 8 | 0 | 0 | 2 | 0 | 5

SCALE None RELEASE DATE

4 1 3 2 1 1



DRAWING NOTES

1. ISI CLASS 1/CLASS 2 BREAK IS AT TUBESHEET.
2. EXCHANGER SPEC. SHEET: AH-RG503
3. TYPE: SHELL & U-TUBE
4. APPROX. DRY WT.: 4669 LBS.
5. APPROX. FLOODED WT.: 5451 LBS.
6. ALL COMPONENTS ON THIS DRAWING ARE INSULATED.

DCNs	
102-1220	

LOCATION

BLDG.: CONTAINMENT
 ROOM/AREA: RHE ROOM
 ELEV.: 21'
 HP AREA: 303E

REFERENCE DRAWINGS

REF. DWG.: SENTRY A04195-A104
 REF. DWG.: SENTRY A03996-1-2

DESIGN DATA

PIPE CLASS	DESIGN		OPERATING	
	*F	PSIG	*F	PSIG
SHELL	650	2485		
TUBE	650	2735		

COMP DIA	NOM THICK	MATERIAL	CAL STD
8.000	0.875	A376 TP304	17-PTB

CONTROLLED

REVISIONS

REV NO.	ZONE	FRW. ID.	DATE	DESCRIPTION	DRAWN	CHK'D	APPR'D	REL'D.
2			06/09/92	INCORPORATED INTO PDS REF. TRANS. #PR-DWG-92-062-	PPL	PPL	DJM	
1			03/23/92	REVISED PER WALKDOWN	KTG	WAB	CTP	

MICROFORM NO. 273492
 CADFILE NO. 46240

VENDOR: WISCONSIN ELECTRIC
 T.F.I.: T2.2
 MOD.: NONE

DRAWN	DATE	APPR'D	DATE
KRH	05/22/90		
JLV	06/05/90		
KTG	06/07/90		

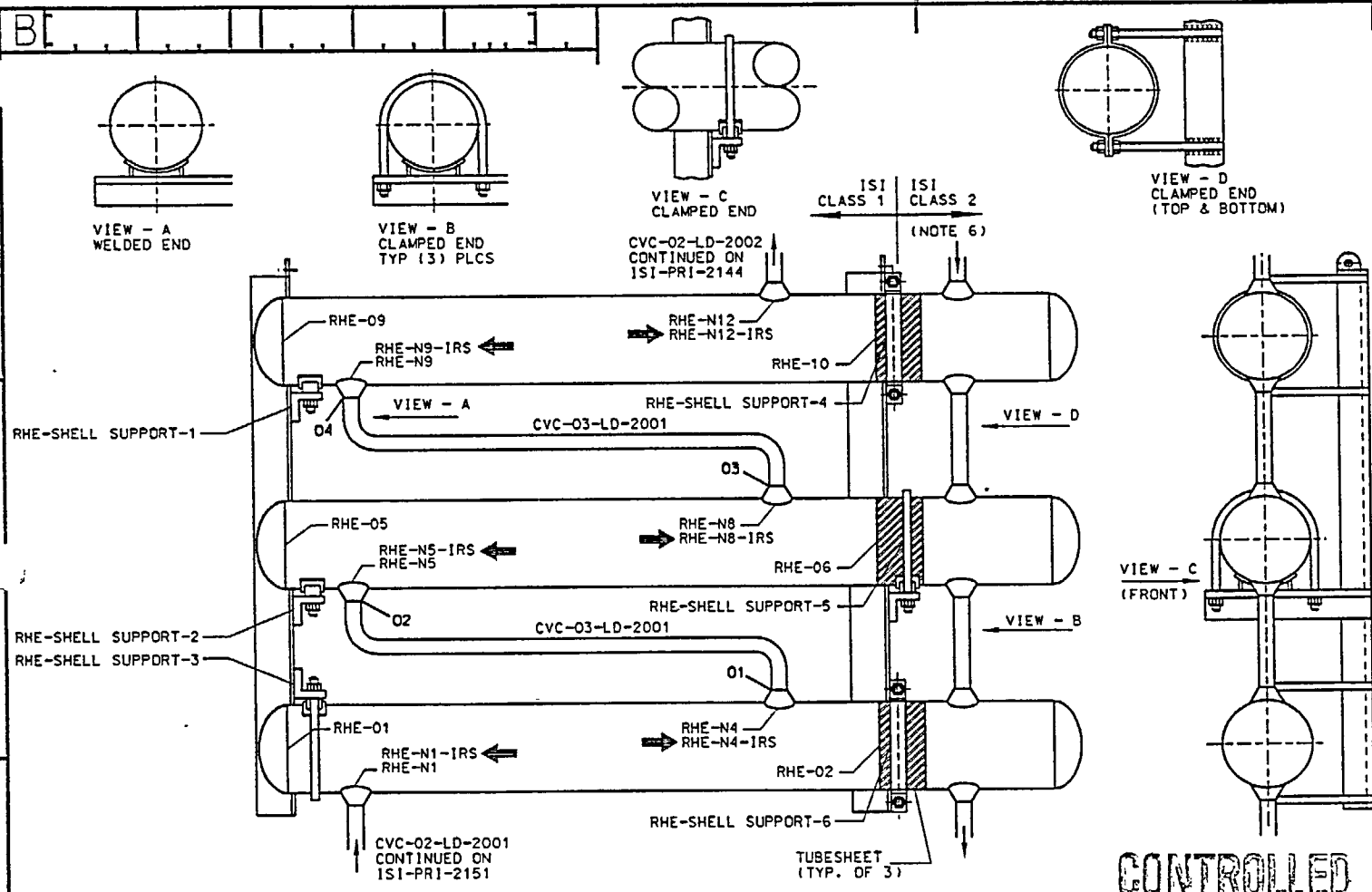


PRIMARY ISI ISOMETRIC
 PBNP Unit 1
 REGENERATIVE HEAT
 EXCHANGER HX-2

DRAWING NO. ISI-PRI-1203

B PB 01 MCVL 10800102

SCALE None
 RELEASE DATE



- DRAWING NOTES**
1. ISI CLASS 1/CLASS 2 BREAK IS AT TUBESHEET.
 2. EXCHANGER SPEC. SHEET: AH-RG503
 3. TYPE: SHELL & U-TUBE
 4. APPROX. DRY WT.: 4669 LBS.
 5. APPROX. FLOODED WT.: 5451 LBS.
 6. FOR CLASS 2 PORTION OF REGENERATIVE HEAT EXCHANGER SEE ISI-PRI-2203.
 7. ALL COMPONENTS ON THIS DRAWING ARE INSULATED.

LOCATION

BLDG.: CONTAINMENT
 ROOM/AREA: REGEN HX CUBICLE
 ELEV.: 21'
 HP AREA: 403E

REFERENCE DRAWINGS

REF. DWG.: SENTRY A04195-A01-2 & A104
 REF. P&ID: 685J175, SH.3

DESIGN DATA

PIPE CLASS	DESIGN		OPERATING	
	*F	PSIG	*F	PSIG
SHELL	650	2485		
TUBE	650	2735		

COMP DIA	NOM THICK	MATERIAL	CAL STD
8.000	0.812	A376 TP304	17-PTB

REVISIONS

REV NO.	ZONE	FRW. ID.	DATE	DESCRIPTION	DRAWN	CHK'D	APPR'D	REL'D
4			8-2-95	REVISED PER DCN #95-0848 6012	JRB	DES	DES	
3			12-20-94	REVISED PER DCN #94-1955	DML	DES	DPW	
2			03/08/93	INCORPORATED INTO PDS REF. TRANS. #PR-DWG-92-062	PPL	PPL	DJM	
1			02/26/92	REVISED PER WALKDOWN	KTG	WAB	JBB	

MICROFORM NO. 271353
 CADFILE NO. 46328

VENDOR: WISCONSIN ELECTRIC
 T.F.I.: T1.5
 MOD.: NONE

DRAWN: KRH DATE: 10/18/90
 CHECKED: CTP DATE: 02/14/91
 DRAFT: KTG DATE: 02/28/91

WISCONSIN ELECTRIC

WFE

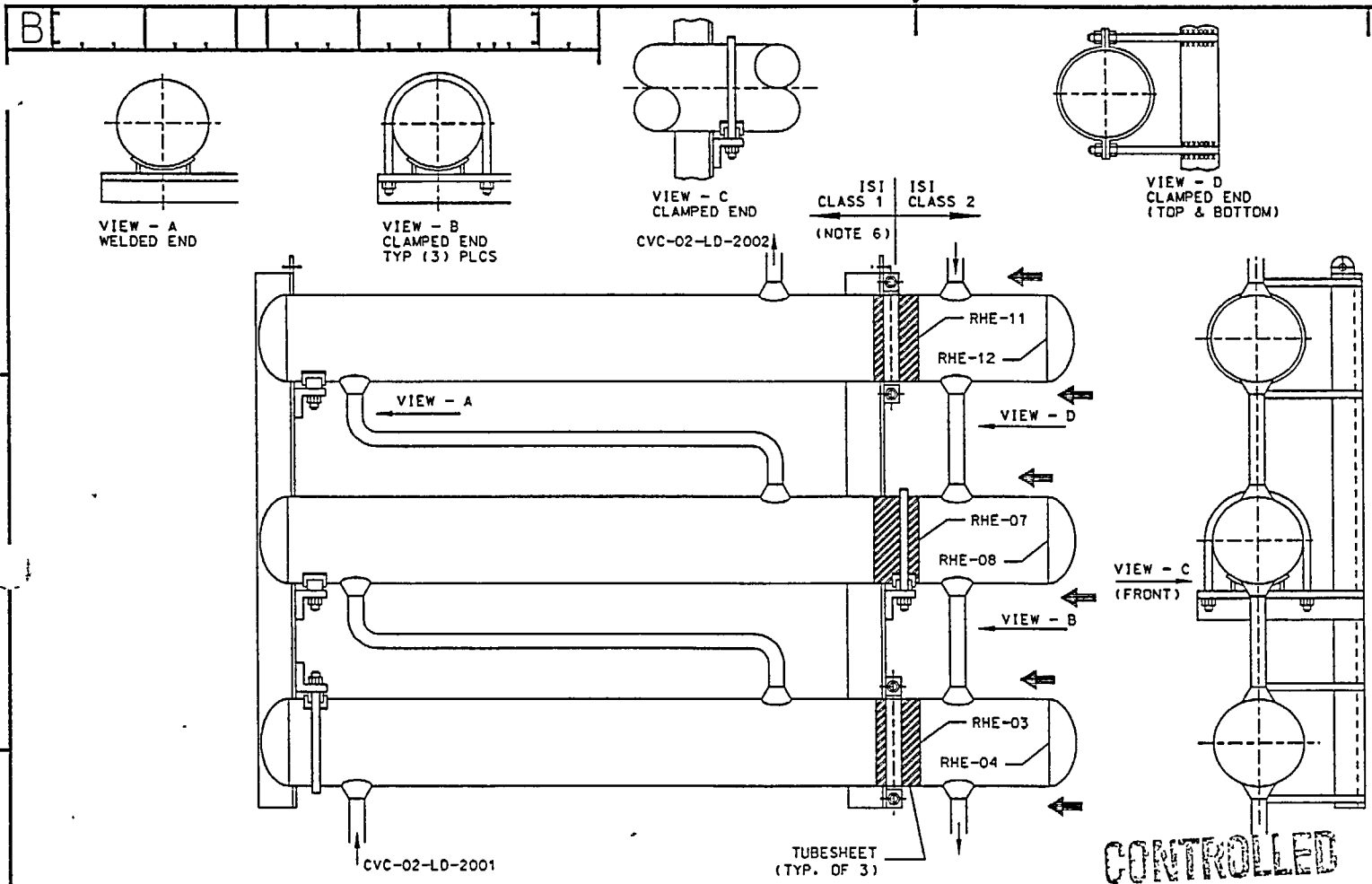
SCALE None

PRIMARY ISI ISOMETRIC
 PBNP Unit 2
 REGENERATIVE HEAT
 EXCHANGER HX-2

DRAWING NO. ISI-PRI-2107

B PB 02 MR CG 10800204

RELEASE DATE



DRAWING NOTES

1. ISI CLASS 1/CLASS 2 BREAK IS AT TUBESHEET.
2. EXCHANGER SPEC. SHEET: AH-RG503
3. TYPE: SHELL & U-TUBE
4. APPROX. DRY WT.: 4669 LBS.
5. APPROX. FLOODED WT.: 5451 LBS.
6. FOR CLASS 1 PORTION OF REGENERATIVE HEAT EXCHANGER SEE ISI-PRI-2107.
7. ALL COMPONENTS ON THIS DRAWING ARE INSULATED.

LOCATION

BLDG.: CONTAINMENT
 ROOM/AREA: REGEN HX CUBICLE
 ELEV.: 21'
 HP AREA: 403E

REFERENCE DRAWINGS

REF. DWG.: SENTRY A04195-A01-2 & A104

DESIGN DATA

PIPE CLASS	DESIGN		OPERATING	
	*F	PSIG	*F	PSIG
SHELL	650	2485		
TUBE	650	2735		

COMP DIA	NOM THICK	MATERIAL	CAL STD
8.000	0.812	A376 TP304	17-PTB

REV NO.	ZONE	FRW. ID.	DATE	DESCRIPTION	DRAWN	CHK'D	APPRV'D	REL'D
3			12-22-94	REVISED PER DCN # 94-1997 5405	JRB	DES	RRS	
2			03/08/93	INCORPORATED INTO PDS REF. TRANS. #OR-DWG-92-062	PPL	PPL	DJM	
1			02/26/92	REVISED PER WALKDOWN	KTG	WAB	JBB	

MICROFORM NO. 271400	CADFILE NO. 46375
VENDOR: WISCONSIN ELECTRIC T.F.I.: T2.2 MOD.: NONE	
DRAWN KRH 10/31/90	APPRV'D DATE
CHECKED CTP 02/21/91	APPRV'D
DRAFT G KTG 02/28/91	APPRV'D GRS 10/01/91

WISCONSIN ELECTRIC

SCALE None

PRIMARY ISI ISOMETRIC PBNP Unit 2 REGENERATIVE HEAT EXCHANGER HX-2			
DRAWING NO. ISI-PRI-2203			
B	PB	02	MCVL10800103
RELEASE DATE			