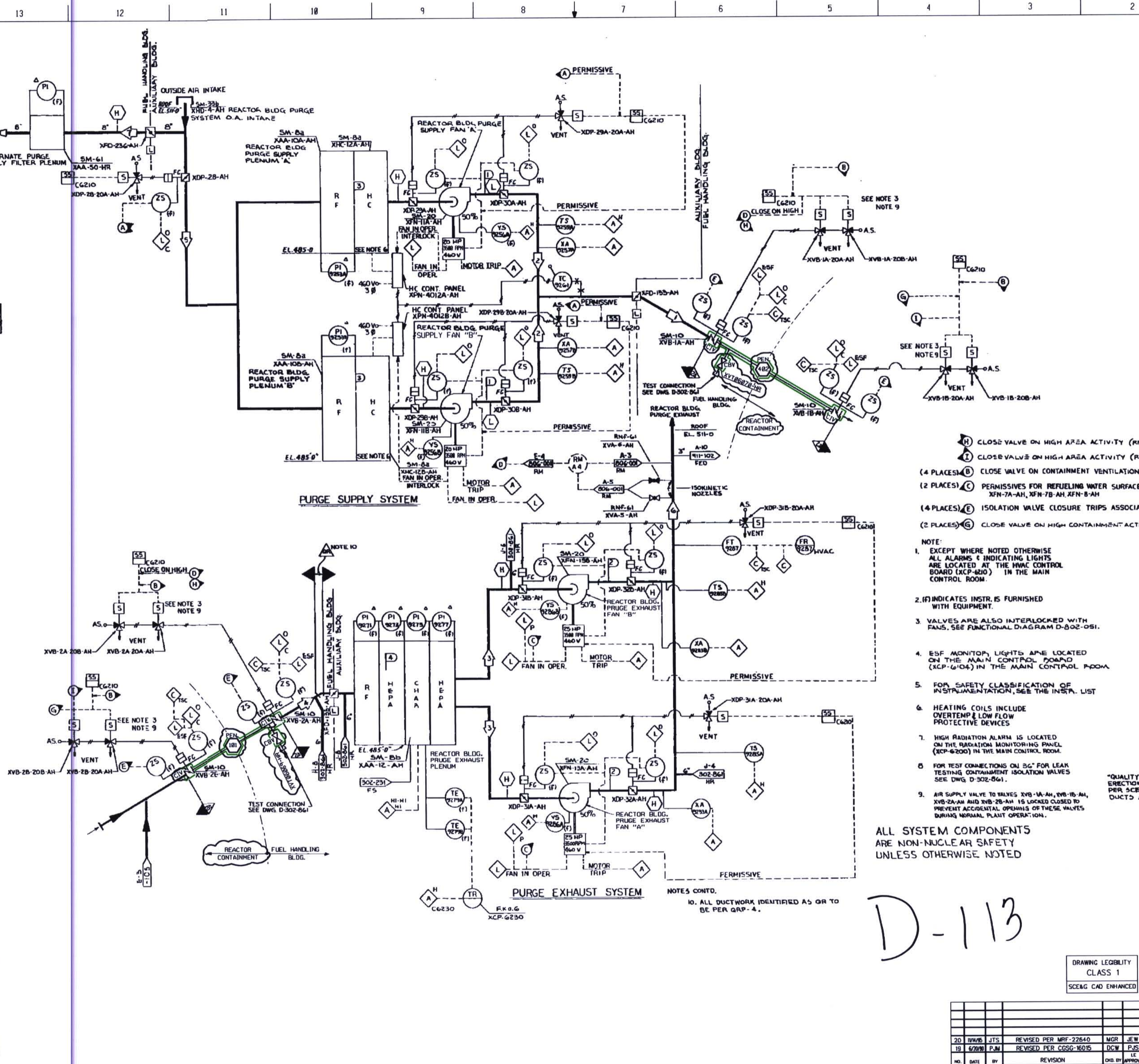


SYSTEM OPERATING DATA		
NO.	UNIT	DESCRIPTION
1	20000	50"
2	10000	50"
3	10000	120"
4	20000	120"
5	20000	19-95"
6	20000	1120"
7	600	ATMOS.

SAFETY CLASS VERIFICATION		
ORIGINATED BY	DATE	REVISION
REVIEWED BY	DATE	REVISION

SYSTEM DESIGN DATA		
4	21,000	
3	12,000	
2	10,000	120 MAX
1	10,000	50-95
2	AIR FLOW	AIR TEMP., PRESSURE
1	ACFM	"F



- (H) CLOSE VALVE ON HIGH AREA ACTIVITY (RM-G17A)
- (I) CLOSE VALVE ON HIGH AREA ACTIVITY (RM-G17B)
- (4 PLACES) (B) CLOSE VALVE ON CONTAINMENT VENTILATION ISOLATION SIGNAL
- (2 PLACES) (C) PERMISSIVES FOR REFUELING WATER SURFACE FANS, XFN-7A-AH, XFN-7B-AH, XFN-8-AH
- (4 PLACES) (E) ISOLATION VALVE CLOSURE TRIPS ASSOCIATED FAN
- (2 PLACES) (G) CLOSE VALVE ON HIGH CONTAINMENT ACTIVITY (RM-A2)

- NOTE:
1. EXCEPT WHERE NOTED OTHERWISE ALL ALARMS & INDICATING LIGHTS ARE LOCATED AT THE HMC CONTROL BOARD (XCP-620) IN THE MAIN CONTROL ROOM.
 2. (F) INDICATES INSTR. IS FURNISHED WITH EQUIPMENT.
 3. VALVES ARE ALSO INTERLOCKED WITH FANS, SEE FUNCTIONAL DIAGRAM D-802-051.
 4. ESF MONITOR LIGHTS ARE LOCATED ON THE HMC CONTROL BOARD (XCP-6104) IN THE MAIN CONTROL ROOM.
 5. FOR SAFETY CLASSIFICATION OF INSTRUMENTATION, SEE THE INSTR. LIST.
 6. HEATING COILS INCLUDE OVERTEMP & LOW FLOW PROTECTIVE DEVICES.
 7. HIGH RADIATION ALARM IS LOCATED ON THE RADIATION MONITORING PANEL (XCP-6200) IN THE MAIN CONTROL ROOM.
 8. FOR TEST CONNECTIONS ON 50" FOR LEAK TESTING, CONTAINMENT ISOLATION VALVES SEE DWG D-302-061.
 9. AIR SUPPLY VALVE TO VALVES XVB-1A-AH, XVB-1B-AH, XVB-2A-AH AND XVB-2B-AH IS LOCKED CLOSED TO PREVENT ACCIDENTAL OPENING OF THESE VALVES DURING NORMAL PLANT OPERATION.

ALL SYSTEM COMPONENTS ARE NON-NUCLEAR SAFETY UNLESS OTHERWISE NOTED

D-113

PLEX Drawing TR00160-007

THIS IS A NUCLEAR SAFETY RELATED DOCUMENT NO DEVIATION SHALL BE INITIATED OR PERFORMED WITHOUT PRIOR DOCUMENTATION AND WRITTEN APPROVAL

DRAWING LEGIBILITY CLASS 1		
NO.	DATE	BY
20	6/20/88	JTS
19	6/20/88	PJM
18	6/20/88	PJM
17	6/20/88	PJM
16	6/20/88	PJM
15	6/20/88	PJM
14	6/20/88	PJM
13	6/20/88	PJM
12	6/20/88	PJM
11	6/20/88	PJM
10	6/20/88	PJM
9	6/20/88	PJM
8	6/20/88	PJM
7	6/20/88	PJM
6	6/20/88	PJM
5	6/20/88	PJM
4	6/20/88	PJM
3	6/20/88	PJM
2	6/20/88	PJM
1	6/20/88	PJM

D-912-103 20