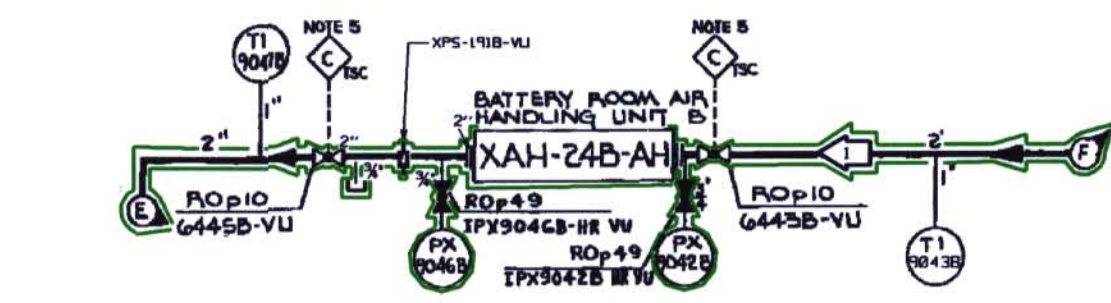
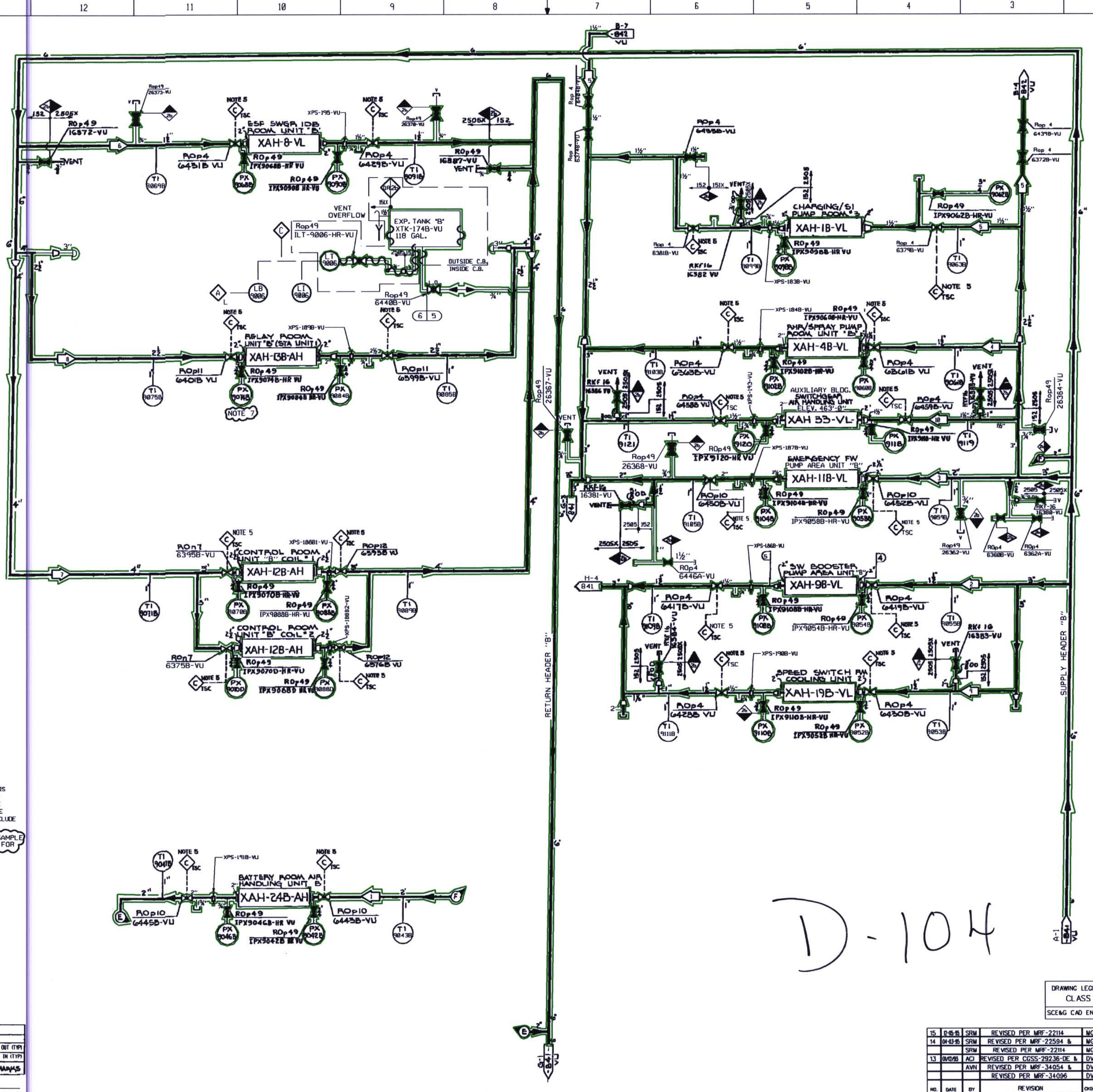


SYSTEM DATA						
NO.	REV.	DATE	BY	CHKD.	REMARKS	
1	01	10/15/88
2	01	10/15/88
3	01	10/15/88
4	01	10/15/88
5	01	10/15/88
6	01	10/15/88
7	01	10/15/88
8	01	10/15/88
9	01	10/15/88
10	01	10/15/88
11	01	10/15/88
12	01	10/15/88
13	01	10/15/88
14	01	10/15/88

SAFETY CLASS VERIFICATION
 ORIGINATED BY: [Signature]
 REVIEWED BY: [Signature]

- NOTES:**
- ALL EQUIPMENT TO BE SAFETY CLASS 2b UNLESS NOTED OTHERWISE
 - ALL SAFETY CLASS PIPING TO BE IN ACCORDANCE WITH LINE SPEC 152H
 - ALL NON SAFETY CLASS PIPING TO BE IN ACCORDANCE WITH LINE SPEC 151X
 - EXCEPT WHERE NOTED OTHERWISE, ALL PLUMBING & INDICATING LIGHTS ARE LOCATED ON THE HVAC CONTROL BOARD
 - OPERATOR INITIATED INPUT TO THE TSC COMPUTER
 - THE HYDROSTATIC PRESSURE LISTED ON THIS DRAWING IN THE DESIGN DATA BOX IS PER SECTION XI OF THE ASME CODE. THE VALUE IS BASED ON DEAD HEAD PRESSURE AT THE PUMP DISCHARGE. THE VALUE DOES NOT INCLUDE PUMP CONNECTIONS.
 - CONNECTION CONTAINS PERMANENT SAMPLE CONNECTION REFER TO IMS-22-1619 FOR DETAILS.

NO.	REV.	DATE	BY	CHKD.	REMARKS
15	01	10/15/88
16	01	10/15/88
17	01	10/15/88
18	01	10/15/88



D-104

PLEX Drawing TR00160-003

DRAWING LEGIBILITY
 CLASS 1
 SCE&G CAD ENHANCED

SOUTH CAROLINA ELECTRIC & GAS COMPANY	
VIRGIL C. SUMNER NUCLEAR STATION	
PIPING SYSTEM FLOW DIAGRAM	
CHILLED WATER - TO COOLING COILS	
DESIGN ENGINEERING	
A.V.N.	D.V.W.
D-302-843	15

NO.	DATE	BY	REVISION	CHKD.	APPROVAL
15	10/15/88	SRW	REVISED PER MRF-22114	MGR	D.L.
14	04/15/88	SRW	REVISED PER MRF-22594 & MGR	CHR	...
13	04/08/88	ACI	REVISED PER MRF-22114	MGR	D.L.
12	04/08/88	ACI	REVISED PER COSS-29223E-DE & DWV	JMG	...
11	04/08/88	AVN	REVISED PER MRF-34054 & DWV	DJC	...
10	04/08/88	AVN	REVISED PER MRF-34094	DWV	MAB