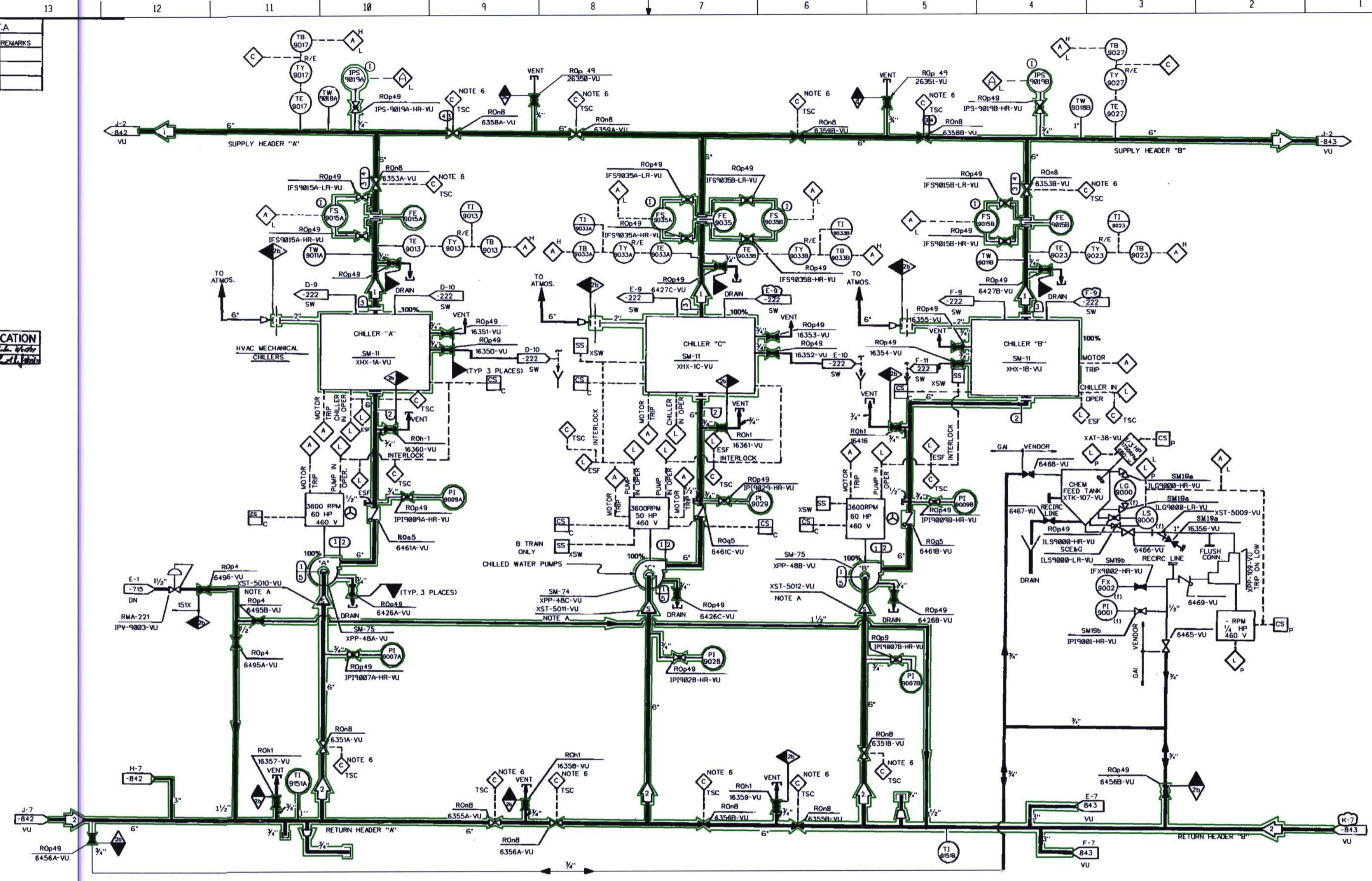


SYSTEM DATA					
ID	PSIG	*F	BY	REMARKS	
1	64.3	114	45	JAH	
2	64.3	40	54	JAH	
3					

SAFETY CLASS VERIFICATION
 ORIGINATED BY: *L. J. ...*
 REVIEWED BY: *L. J. ...*



ID	PSIG	*F	DURATION	HYDRO	BY	REMARKS
5	123	54		136	D.L.	NOTE 7
4	123	45		136	D.L.	NOTE 7
3	123	45		136	D.L.	NOTE 7
2	123	54		136	D.L.	NOTE 7
1	42	54		136	D.L.	NOTE 7

DESIGN DATA

- NOTES:
- ALL EQUIPMENT TO BE SAFETY CLASS 2B UNLESS NOTED OTHERWISE.
 - ALL SAFETY CLASS PIPING TO BE IN ACCORDANCE WITH LINE SPEC 153N.
 - ALL NON-SAFETY CLASS PIPING TO BE IN ACCORDANCE WITH LINE SPEC 151X.
 - EXCEPT WHERE NOTED OTHERWISE ALL ALARMS & INDICATING LIGHTS ARE LOCATED ON THE HVAC CONTROL BOARD (EXP-6210-40) IN THE MAIN CONTROL ROOM.
 - CHEM. FEED TANK SWITCHES & INDICATING LIGHTS ARE LOCATED AT LOCAL PANEL XPM-44-VU.
 - OPERATOR INITIATED INPUT TO THE TSC COMPUTER.
 - THE HYDROSTATIC PRESSURE LISTED ON THIS DRAWING IN THE DESIGN DATA BOX IS PER SECTION XI OF THE ASME CODE. THIS VALUE IS BASED ON DEAD HEAD PRESSURE AT THE PUMP DISCHARGE. THE VALUE DOES NOT INCLUDE ELEVATION CORRECTIONS.
- NOTE:
 A. TEMPORARY STRAINER FOR SYSTEM CLEAN UP TO BE REMOVED AFTER FINAL FLUSH.

D-102

PLEX Drawing TR00160-003

THIS IS A NUCLEAR SAFETY RELATED DOCUMENT. NO DEVIATION SHALL BE INITIATED OR PERFORMED WITHOUT PRIOR DOCUMENTATION AND WRITTEN APPROVAL.

FSAR Figure 9.4-22
 SOUTH CAROLINA ELECTRIC & GAS COMPANY
 VIREIL C. SUMNER NUCLEAR STATION
 PIPING SYSTEM FLOW DIAGRAM
 CHILLED WATER PUMP & CHILLER AREA

DRAWING LEGIBILITY CLASS 1
 SCE&G CAD ENHANCED

NO.	DATE	BY	REVISION	CHK. BY	APP. BY
23	01/07	AVN	REVISED PER CCSS-97-0579	LEK	MGR
22	03/98	SRM	REVISED PER MRF-22594 & MRF-22110	MGR	CHR
21	03/98	AVN	REVISED PER MRF-34054	DVM	D.L.
20	08/98	SRM	REVISED PER CCSS-96201-DE	AG	TQL

DESIGN ENGINEERING			
DATE	BY	CHK. BY	APP. BY
01/07	AVN	LEK	MGR
03/98	SRM	MGR	CHR
03/98	AVN	DVM	D.L.
08/98	SRM	AG	TQL

D-302-841