

SYSTEM DATA				
NO.	GPM	PSIG	°F	BY
1	1800	50	150	WTW
2	1800	50	150	WTW
3	180	100	135	WTW

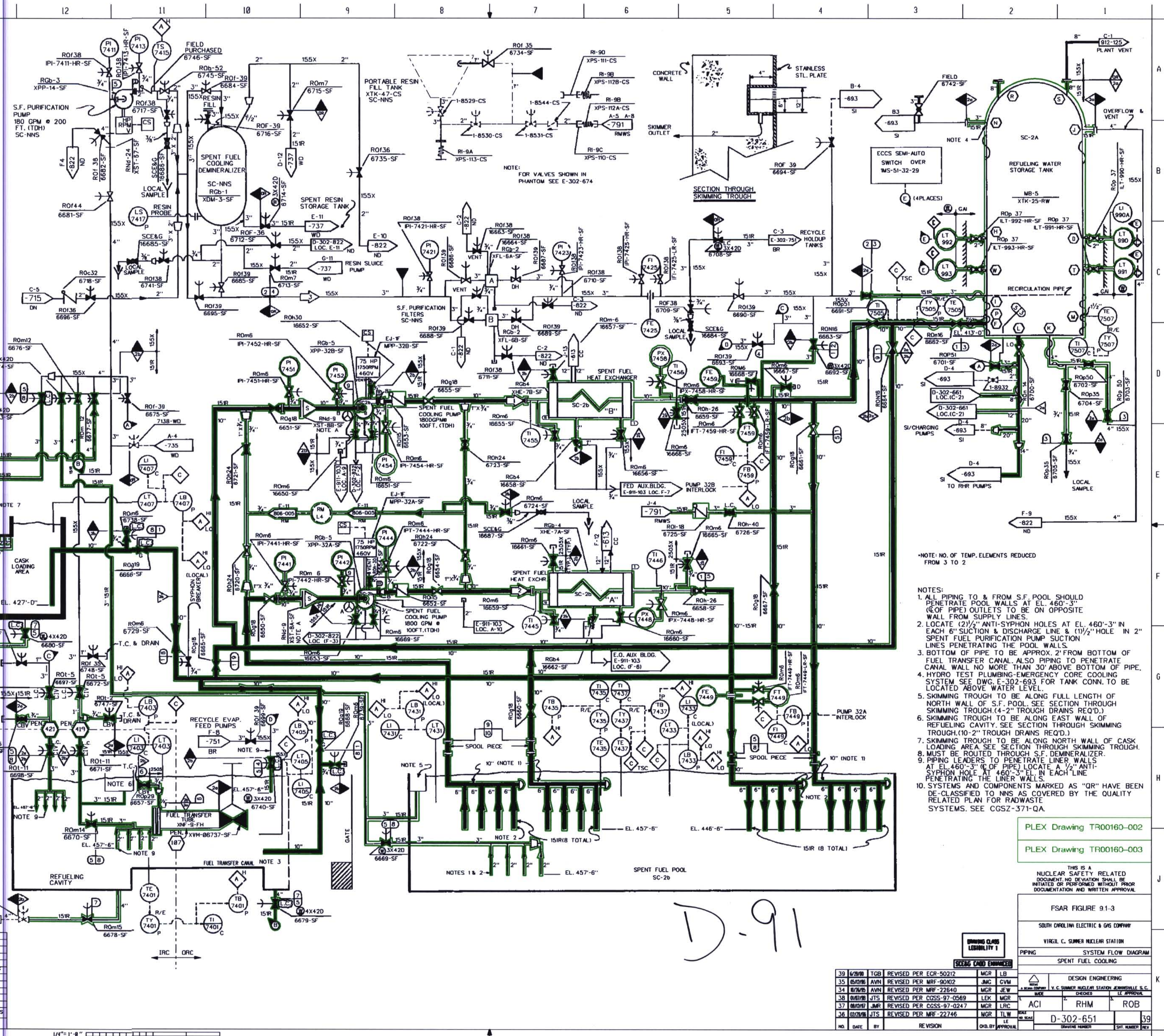
SAFETY CLASS VERIFICATION		
ORIGINATED BY	DATE	REVIEWED BY
P. Ramsey	4/13/74	L. J. ...

VALVE NUMBERING			
SYSTEM SUFFIX	FIRST NO.	LAST NO.	
SF	16650	16667	
SF	6650	6749	

NOTE:
A TEMPORARY STRAINER FOR SYSTEM CLEAN UP, TO BE REMOVED AFTER FINAL FLUSH

* HYDRO NOT REQ'D PER N-240 CODE CASE
 ** STANDING WATER HYDRO
 *** HYDRO TEMP. 40°F MIN. (STAINLESS STEEL)
 60°F MIN. (CARBON STEEL)

NO.	DATE	BY	REVISION
1	7/74
2
3
4
5
6
7
8
9
10
11
12
13
14
15
16
17
18
19
20



- *NOTE: NO. OF TEMP. ELEMENTS REDUCED FROM 3 TO 2
- NOTES:
1. ALL PIPING TO & FROM S.F. POOL SHOULD PENETRATE POOL WALLS AT EL. 460'-3" (TOP OF PIPE) OUTLETS TO BE ON OPPOSITE WALL FROM SUPPLY LINES.
 2. LOCATE (2) 1/2" ANTI-SYPHON HOLES AT EL. 460'-3" IN EACH 6" SUCTION & DISCHARGE LINE & (1) 1/2" HOLE IN 2" SPENT FUEL PURIFICATION PUMP SUCTION LINES PENETRATING THE POOL WALLS.
 3. BOTTOM OF PIPE TO BE APPROX. 2" FROM BOTTOM OF FUEL TRANSFER CANAL ALSO PIPING TO PENETRATE CANAL WALL NO MORE THAN 30" ABOVE BOTTOM OF PIPE.
 4. HYDRO TEST PLUMBING-EMERGENCY CORE COOLING SYSTEM SEE DWG. E-302-693 FOR TANK CONN. TO BE LOCATED ABOVE WATER LEVEL.
 5. SKIMMING TROUGH TO BE ALONG FULL LENGTH OF NORTH WALL OF S.F. POOL. SEE SECTION THROUGH SKIMMING TROUGH (4'-2" TROUGH DRAINS REQ'D.)
 6. SKIMMING TROUGH TO BE ALONG EAST WALL OF REFUELING CAVITY. SEE SECTION THROUGH SKIMMING TROUGH (10'-2" TROUGH DRAINS REQ'D.)
 7. SKIMMING TROUGH TO BE ALONG NORTH WALL OF CASK LOADING AREA. SEE SECTION THROUGH SKIMMING TROUGH.
 8. MUST BE ROUTED THROUGH S.F. DEMINERALIZER.
 9. PIPING LEADERS TO PENETRATE LINER WALLS AT EL. 460'-3" (TOP OF PIPE) LOCATE A 1/2" ANTI-SYPHON HOLE AT 460'-3" EL. IN EACH LINE PENETRATING THE LINER WALLS.
 10. SYSTEMS AND COMPONENTS MARKED AS "OR" HAVE BEEN DE-CLASSIFIED TO NNS AS COVERED BY THE QUALITY RELATED PLAN FOR RADWASTE SYSTEMS. SEE CGS2-371-QA.

PLEX Drawing TR00160-002
 PLEX Drawing TR00160-003

THIS IS A NUCLEAR SAFETY RELATED DOCUMENT. NO DEVIATION SHALL BE INITIATED OR PERFORMED WITHOUT PRIOR DOCUMENTATION AND WRITTEN APPROVAL.

DESIGN ENGINEERING	
ACI	RHM
ROB	

NO.	DATE	BY	REVISION
35
36
37
38

D-91