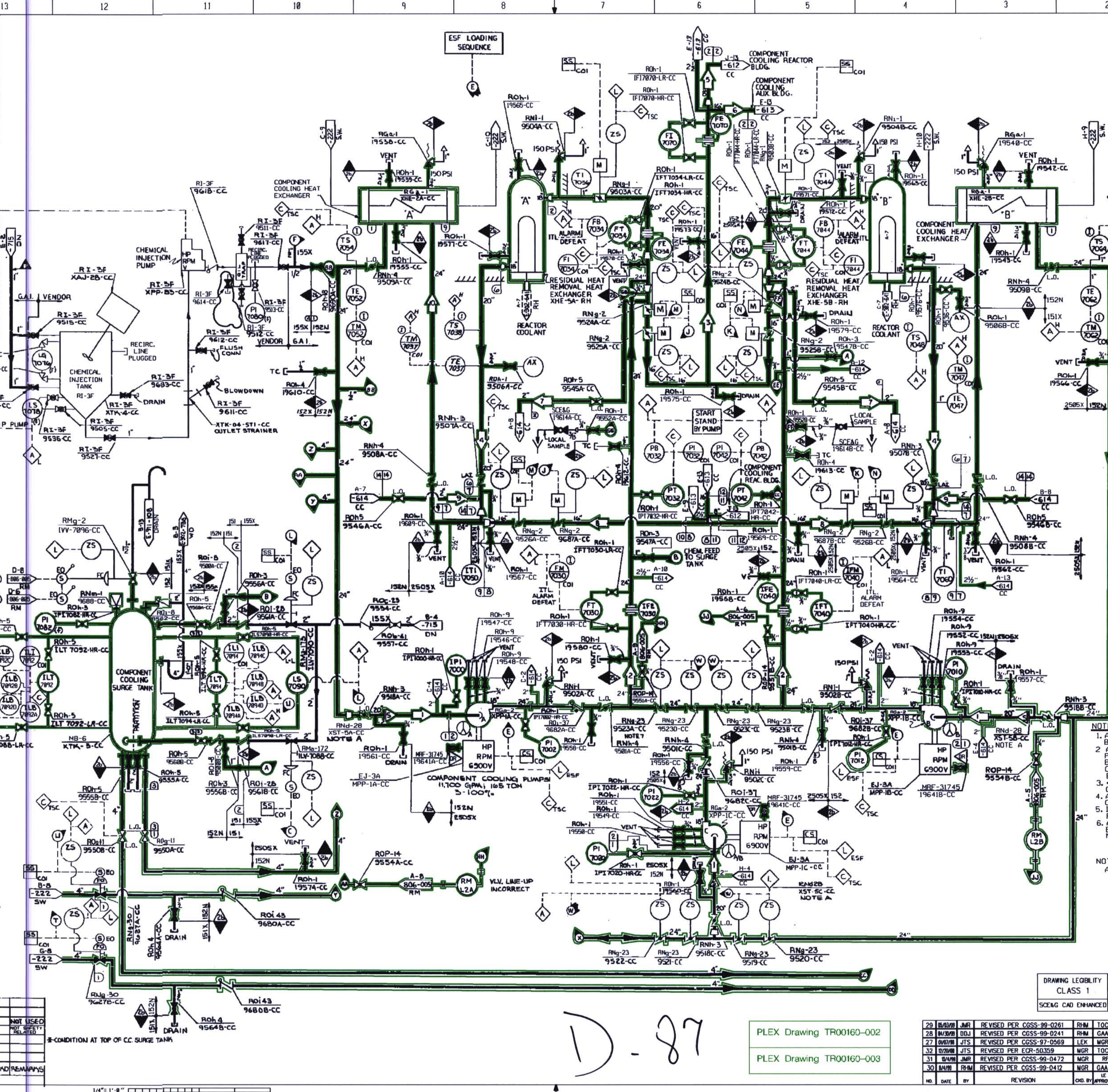


SYSTEM DATA				
MAX. GPM	PSIG	HT	REMARKS	
1	11,000	30	MAX SUPPLY TEMP - 120 °F	
2	11,000	105		
3	6,145	100		
4	5,600	70		
5	1,887	100		
6	2,950	100		
7	48	100		
8	6,145	70		
9	48	70		
10	11,000	70		

SAFETY CLASS VERIFICATION
 ORIGINATED BY: [Signature]
 REVIEWED BY: [Signature]

HYDRO TEMP - COLD WATER									
IN	OUT	TEMP	DIFF	UNIT	REMARKS				
4	30	100	100	200	150	EPH			NOT USED
5	15	200	15	200	195	DTN			NOT USED
2	120	150	180	2 hr	170	DTN			
1	50	140	50	180	2 hr	40	DTN		

DESIGN DATA



- NOTES:**
1. ALL NUC. SAFETY CLASS PIPING TO BE LINE SPEC 152N.
 2. ALL NON-NUC. SAFETY CLASS PIPING EXCEPT THAT SUPPLIED BY CHEM. INJ. SYSTEM VENDOR OR AS INDICATED OTHERWISE, TO BE LINE SPEC. 151X.
 3. * DENOTES MISSION 'DUO-CHEK' OR EQUAL.
 4. ALL PIPING TO BE ANS. SAFETY CLASS 2B EXCEPT AS NOTED.
 5. ITEMS DESIGNATED WITH (F) ARE FURNISHED BY EQUIP. SUPPLIER.
 6. ALL (S) STATUS LIGHTS INDICATE BOTH OPEN AND CLOSED UNLESS NOTED OTHERWISE.

NOTE:
 A. TEMPORARY STRAINER FOR SYSTEM CLEAN UP TO BE REMOVED AFTER FINAL FLUSH.

THIS IS A NUCLEAR SAFETY RELATED DOCUMENT. NO DEVIATION SHALL BE INITIATED OR PERFORMED WITHOUT PRIOR DOCUMENTATION AND WRITTEN APPROVAL.

FSAR FIGURE 9.2-4
 SOUTH CAROLINA ELECTRIC & GAS COMPANY
 VIRGIL C. SUMNER NUCLEAR STATION
 PIPING SYSTEM FLOW DIAGRAM
 COMPONENT COOLING

DRAWING LEGIBILITY CLASS 1
 SC24G CAD ENHANCED

PLEX Drawing TR00160-002
 PLEX Drawing TR00160-003

NO.	DATE	BY	REVISION	CHK'D BY	APPROVAL
29	04/01/00	JMS	REVISED PER CGSS-99-0261	RHM	TOC
28	03/09/00	DDJ	REVISED PER CGSS-99-0241	RHM	GAA
27	04/01/00	JMS	REVISED PER CGSS-97-0569	LEX	MGR
26	07/20/99	JMS	REVISED PER EQR-50359	MGR	TOC
25	04/01/00	JMS	REVISED PER CGSS-99-0472	MGR	BF
24	03/09/00	RHM	REVISED PER CGSS-99-0412	MGR	GAA

DESIGN ENGINEERING			
NO.	DATE	BY	APPROVAL
1			
2			
3			
4			
5			
6			
7			
8			
9			
10			
11			
12			
13			
14			
15			
16			
17			
18			
19			
20			
21			
22			
23			
24			
25			
26			
27			
28			
29			
30			
31			
32			

D-302-611

D-87

1/4" = 1' - 0"