

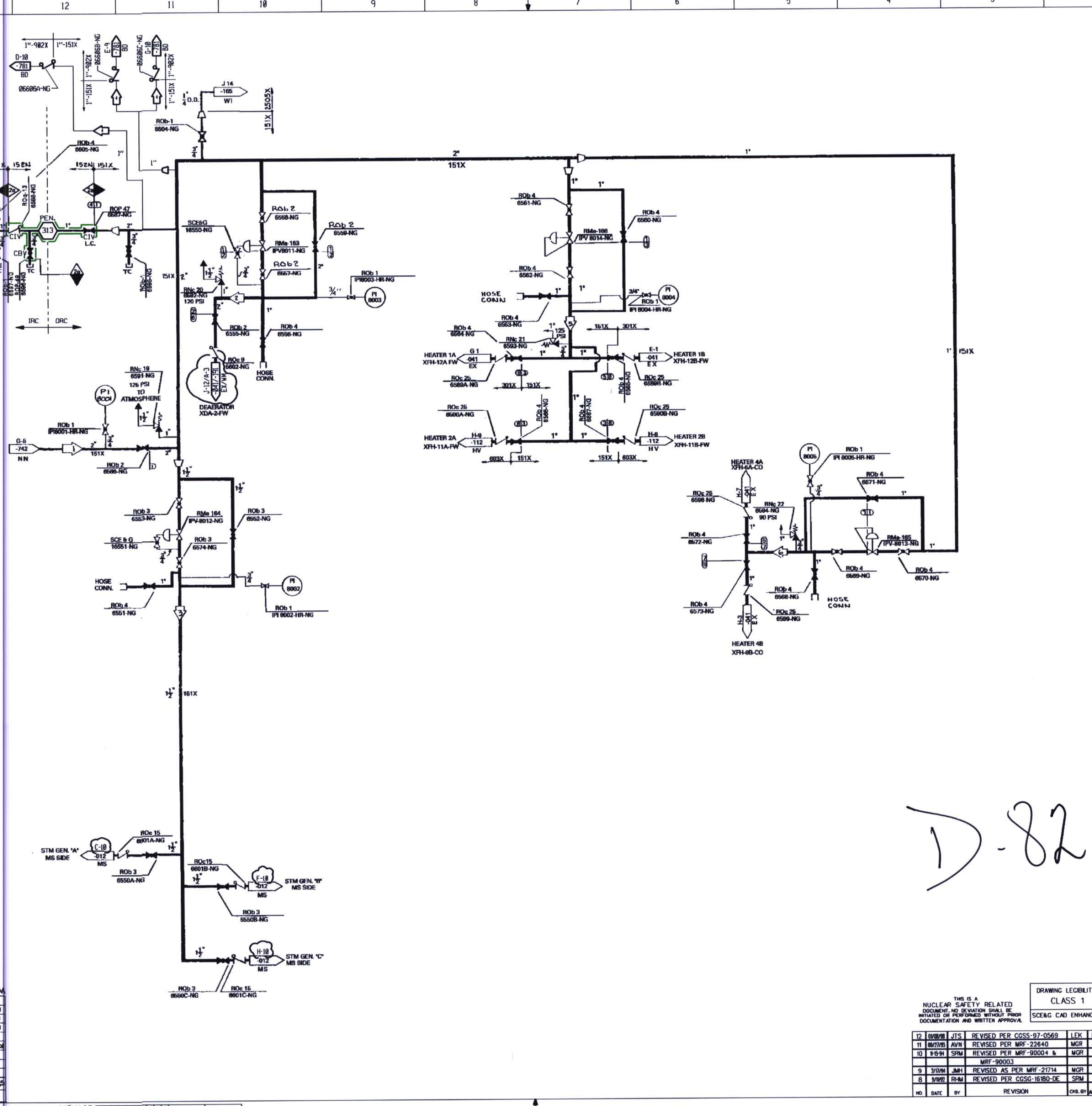
SYSTEM DATA					
NO	DATE	BY	REVISION	DESCRIPTION	REMARKS
1	5/00	JCS	120	JCS	
2	5/00	JCS	120	JCS	
3	5/00	JCS	120	JCS	
4	5/00	JCS	120	JCS	
5	5/00	JCS	120	JCS	
6	5/00	JCS	120	JCS	
7	5/00	JCS	120	JCS	
8	5/00	JCS	120	JCS	

SAFETY CLASS VERIFICATION
 ORIGINATED BY: [Signature]
 REVIEWED BY: [Signature]

* FOR HYDRO TEST W/REST OF SYSTEM

NO	DATE	BY	REVISION	DESCRIPTION	REMARKS
1	5/00	JCS	120	JCS	
2	5/00	JCS	120	JCS	
3	5/00	JCS	120	JCS	
4	5/00	JCS	120	JCS	
5	5/00	JCS	120	JCS	
6	5/00	JCS	120	JCS	
7	5/00	JCS	120	JCS	
8	5/00	JCS	120	JCS	

DESIGN DATA 1



D-82

THIS IS A NUCLEAR SAFETY RELATED DOCUMENT. NO DEVIATION SHALL BE INITIATED OR PERFORMED WITHOUT PROPER DOCUMENTATION AND WRITTEN APPROVAL.

DRAWING LEGIBILITY CLASS 1
 SCEAG CAD ENHANCED

PLEX Drawing TRO0160-006
 SOUTH CAROLINA ELECTRIC & GAS COMPANY
 VIREIL C. SUMNER NUCLEAR STATION
 PIPING SYSTEM FLOW DIAGRAM
 NITROGEN BLANKETING

NO	DATE	BY	REVISION	CHK BY	APPROVAL
12	04/08	JCS	REVISED PER CCSS-97-0566	LEK	MGR
11	04/78	AVR	REVISED PER MRF-22640	MGR	JEW
10	04/91	SRM	REVISED PER MRF-90004 & MRF-90003	MGR	TRC
9	03/94	JMH	REVISED AS PER MRF-21714	MGR	LEK
8	04/97	SRM	REVISED PER CCSS-16180-DE	SRM	TOL

DESIGN ENGINEERING
 V.C. SUMNER NUCLEAR STATION, CHARLOTTE, S.C.
 JMH MGR LEK
 D-302-311
 x3020018