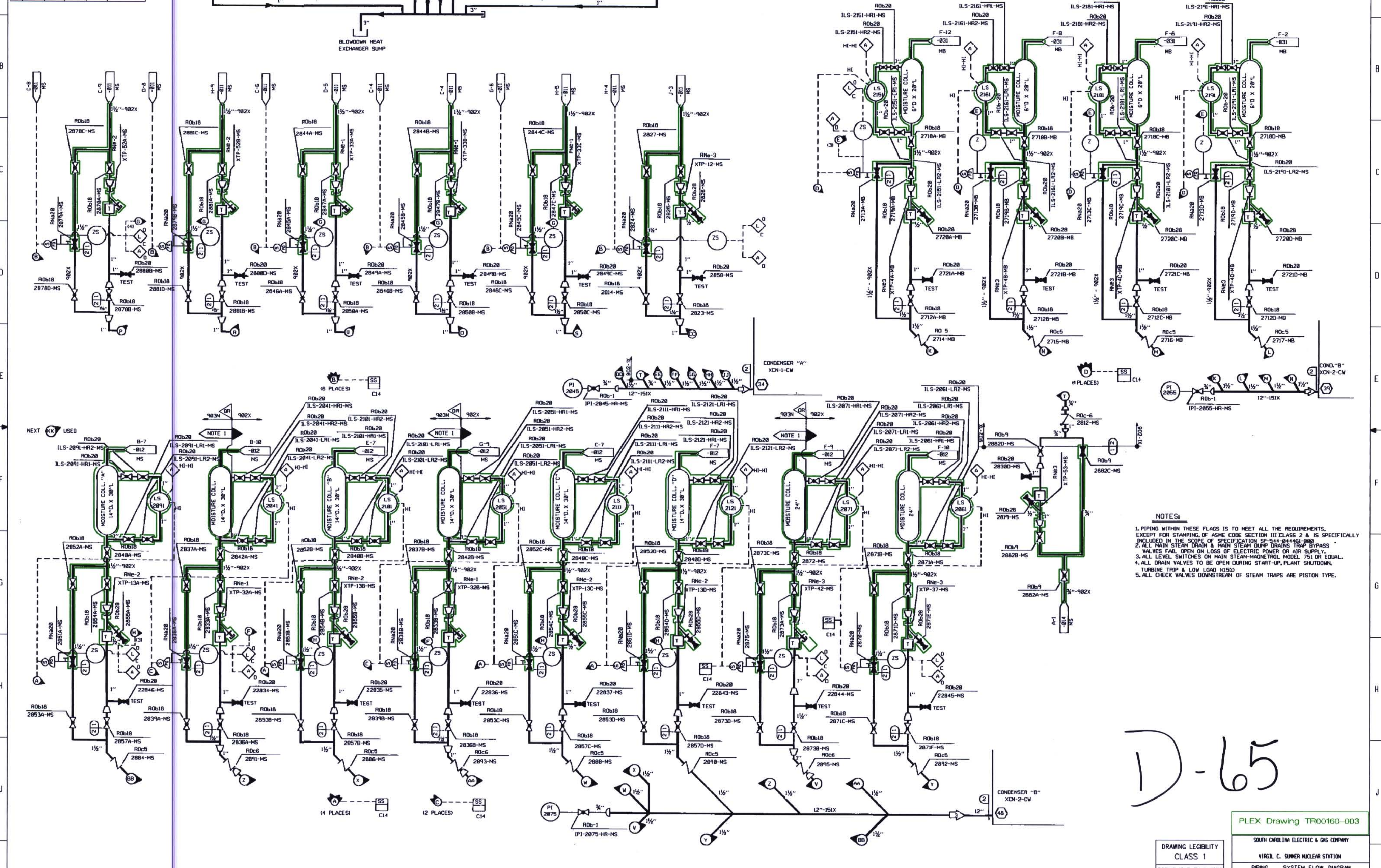


SYSTEM DATA				
NO.	DATE	BY	REMARKS	
1	8.75	JJM	WARM UP	
2	8.75	JJM	NOR. OPER.	
3	8.2	JJM	WARM UP	
4	8.2	JJM	NOR. OPER.	
5	7.84	JJM	WARM UP	
6	7.84	JJM	NOR. OPER.	



DESIGN DATA				
NO.	DATE	BY	REMARKS	
1	1195	PSG	DESIGN	
2	300	420	308	420
3	1195	600	1284	600
4	1195	600	1284	600
5	1195	600	1284	600
6	1195	600	1284	600
7	1195	600	1284	600
8	1195	600	1284	600
9	1195	600	1284	600
10	1195	600	1284	600
11	1195	600	1284	600
12	1195	600	1284	600
13	1195	600	1284	600
14	1195	600	1284	600
15	1195	600	1284	600
16	1195	600	1284	600
17	1195	600	1284	600
18	1195	600	1284	600
19	1195	600	1284	600
20	1195	600	1284	600
21	1195	600	1284	600
22	1195	600	1284	600
23	1195	600	1284	600
24	1195	600	1284	600
25	1195	600	1284	600
26	1195	600	1284	600
27	1195	600	1284	600
28	1195	600	1284	600
29	1195	600	1284	600
30	1195	600	1284	600
31	1195	600	1284	600
32	1195	600	1284	600
33	1195	600	1284	600
34	1195	600	1284	600
35	1195	600	1284	600
36	1195	600	1284	600
37	1195	600	1284	600
38	1195	600	1284	600
39	1195	600	1284	600
40	1195	600	1284	600
41	1195	600	1284	600
42	1195	600	1284	600
43	1195	600	1284	600
44	1195	600	1284	600
45	1195	600	1284	600
46	1195	600	1284	600
47	1195	600	1284	600
48	1195	600	1284	600
49	1195	600	1284	600
50	1195	600	1284	600

D-65

- NOTES:
1. PIPING WITH THESE FLAGS IS TO MEET ALL THE REQUIREMENTS, EXCEPT FOR STAMPING OF ASME CODE SECTION III CLASS 2 & IS SPECIFICALLY INCLUDED IN THE SCOPE OF SPECIFICATION SP-944-844461-000.
 2. ALL MAIN STEAM DRAIN & MAIN STEAM DRAIN BYPASS VALVES FAIL OPEN ON LOSS OF ELECTRIC POWER OR AIR SUPPLY.
 3. ALL LEVEL SWITCHES ON MAIN STEAM-MOISTURE CONTROL MODEL 751 OR EQUAL.
 4. ALL DRAIN VALVES TO BE OPEN DURING START-UP, PLANT SHUTDOWN, TURBINE TRIP & LOW LOAD (50%).
 5. ALL CHECK VALVES DOWNSTREAM OF STEAM TRAPS ARE PISTON TYPE.

PLEX Drawing TR00160-003
 SOUTH CAROLINA ELECTRIC & GAS COMPANY
 VIRGINIA C. SUMNER NUCLEAR STATION
 PIPING SYSTEM FLOW DIAGRAM
 MAIN STEAM DRAINS

NO.	DATE	BY	REVISION	CHK. BY	APPROVA.
10	8/7/8	RHM	REVISED PER ETBT-751 & 267	MGR	JEW
9	8/8/8	AVM	REVISED PER CESS-28531-DE	RHM	MEC
8	8/29/8	RHM	REVISED PER MFR-21358	MGR	JEW

DESIGN ENGINEERING		
DATE	BY	BY
8/7/8	RHM	JEW
8/8/8	AVM	MEC
8/29/8	RHM	JEW