

SYSTEM DATA				
FLOW	PSIG	°F	REMARKS	
1	4.277x10 ¹⁸ lb/hr	3817	436	1802 LOAD
2	1.87x10 ¹⁸ lb/hr	1136	325	0-25% LOAD
3	178 GPM	1136	225	STARTUP
4	295 GPM	1138	95	NORMAL STARTUP
5	1988 GPM	275	225	STARTUP/FWB/F ONLY

Ⓢ NEXT LETTER

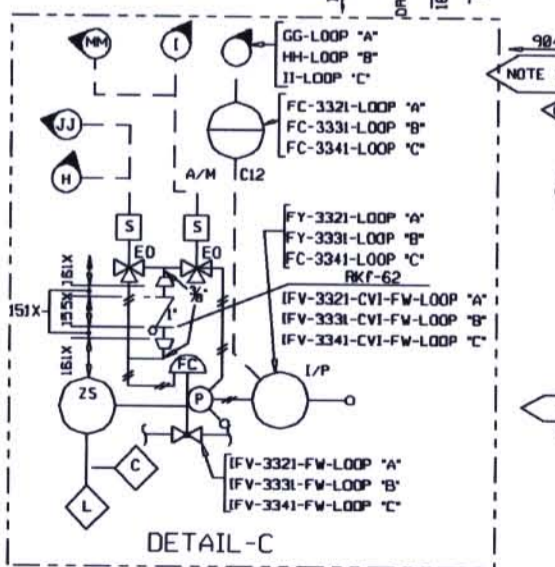
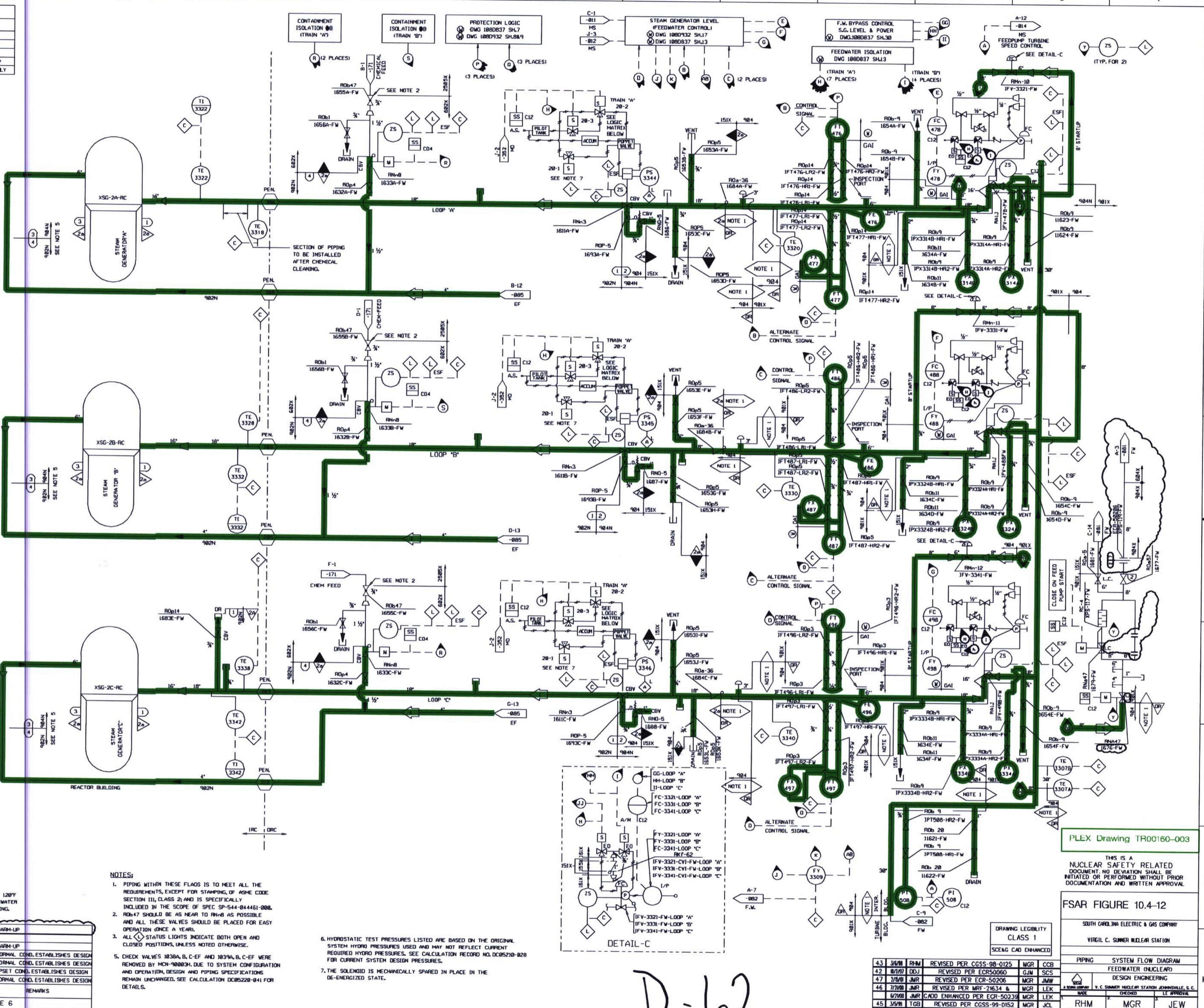
SAFETY CLASS VERIFICATION	
ORIGINATED BY	J.R. REED 2-14-74
REVIEWED BY	D. FERRIGAL 2-22-76

ISOLABLE SOLENOID LOGIC MATRIX	
SOLENOIDS	VALVE ACTION
2 + 3	
0 0	CLOSE
1 0	OPEN
0 1	OPEN
1 1	OPEN
0	DE-ENERGIZED
1	ENERGIZED

NOTE: MINIMUM HYDRO TEST TEMPERATURES ARE 120°F FOR THE STEAM GENERATOR AND 30°F FEEDWATER PIPING AND 70°F FOR THE REMAINING PIPING.

NO.	DATE	BY	REVISION	DESCRIPTION				
7	480	449	508	443	01X	-	RE	WASH-UP
6	295	225	295	449	01X	-	RE	WASH-UP
5	1185	680	1304	680	01X	1488	DTK	NORMAL COND. ESTABLISHES DESIGN
4	1220	158	1368	95	01X	1488	EJA	NORMAL COND. ESTABLISHES DESIGN
3	1220	680	1368	680	01X	1488	EJA	NORMAL COND. ESTABLISHES DESIGN
2	1380	449	1720	449	01X	2958	HNG	UPSET COND. ESTABLISHES DESIGN
1	1189	557	1298	557	01X	1488	WTM	NORMAL COND. ESTABLISHES DESIGN
	PSIG	F	PSIG	F	27HRS	PSIG	BY	24H
	NORMAL							HYDRO

DESIGN DATA SEE NOTE 6



- NOTES:
1. PIPING WITHIN THESE FLAGS IS TO MEET ALL THE REQUIREMENTS, EXCEPT FOR STAMPING OF ASME CODE SECTION III, CLASS 2, AND IS SPECIFICALLY INCLUDED IN THE SCOPE OF SPEC. 02-544-0444E1-000L AND ALL THESE VALVES SHOULD BE PLACED FOR EASY OPERATION ONCE A YEAR.
 2. ROB-47 SHOULD BE AS NEAR TO RW-8 AS POSSIBLE AND ALL THESE VALVES SHOULD BE PLACED FOR EASY OPERATION ONCE A YEAR.
 3. ALL STATUS LIGHTS INDICATE BOTH OPEN AND CLOSED POSITIONS, UNLESS NOTED OTHERWISE.
 4. CHECK VALVES 1030A, B, C-F AND 1030A, B, C-F WERE REMOVED BY MCH-980834, DUE TO SYSTEM CONFIGURATION AND OPERATION, DESIGN AND PIPING SPECIFICATIONS REMAIN UNCHANGED. SEE CALCULATION DC82520-041 FOR DETAILS.
 5. HYDROSTATIC TEST PRESSURES LISTED ARE BASED ON THE ORIGINAL SYSTEM HYDRO PRESSURES USED AND MAY NOT REFLECT CURRENT REQUIRED HYDRO PRESSURES. SEE CALCULATION RECORD NO. DC82520-028 FOR CURRENT SYSTEM DESIGN PRESSURES.
 6. THE SOLENOID IS MECHANICALLY SPARED IN PLACE IN THE DE-ENERGIZED STATE.

PLEX Drawing TR00160-003

THIS IS A NUCLEAR SAFETY RELATED DOCUMENT. NO DEVIATION SHALL BE INITIATED OR PERFORMED WITHOUT PRIOR DOCUMENTATION AND WRITTEN APPROVAL.

FSAR FIGURE 10.4-12

SOUTH CAROLINA ELECTRIC & GAS COMPANY
VIRGIL C. SUMNER NUCLEAR STATION

NO.	DATE	BY	REVISION	DESCRIPTION	CHK'D BY	APP'D BY
43	3/88	RHM	REVISED PER CGSS-98-0125	MGR	CGB	
42	3/87	DDJ	REVISED PER ECR50060	GJM	SCS	
41	7/86	JMP	REVISED PER ECR-50206	MGR	JMW	
40	7/86	JMP	REVISED PER ECR-50206	MGR	LEX	
39	6/86	JMP	REVISED PER ECR-50206	MGR	LEX	
38	6/86	JMP	REVISED PER ECR-50206	MGR	LEX	
37	6/86	JMP	REVISED PER ECR-50206	MGR	LEX	
36	6/86	JMP	REVISED PER ECR-50206	MGR	LEX	
35	6/86	JMP	REVISED PER ECR-50206	MGR	LEX	
34	6/86	JMP	REVISED PER ECR-50206	MGR	LEX	
33	6/86	JMP	REVISED PER ECR-50206	MGR	LEX	
32	6/86	JMP	REVISED PER ECR-50206	MGR	LEX	
31	6/86	JMP	REVISED PER ECR-50206	MGR	LEX	
30	6/86	JMP	REVISED PER ECR-50206	MGR	LEX	
29	6/86	JMP	REVISED PER ECR-50206	MGR	LEX	
28	6/86	JMP	REVISED PER ECR-50206	MGR	LEX	
27	6/86	JMP	REVISED PER ECR-50206	MGR	LEX	
26	6/86	JMP	REVISED PER ECR-50206	MGR	LEX	
25	6/86	JMP	REVISED PER ECR-50206	MGR	LEX	
24	6/86	JMP	REVISED PER ECR-50206	MGR	LEX	
23	6/86	JMP	REVISED PER ECR-50206	MGR	LEX	
22	6/86	JMP	REVISED PER ECR-50206	MGR	LEX	
21	6/86	JMP	REVISED PER ECR-50206	MGR	LEX	
20	6/86	JMP	REVISED PER ECR-50206	MGR	LEX	
19	6/86	JMP	REVISED PER ECR-50206	MGR	LEX	
18	6/86	JMP	REVISED PER ECR-50206	MGR	LEX	
17	6/86	JMP	REVISED PER ECR-50206	MGR	LEX	
16	6/86	JMP	REVISED PER ECR-50206	MGR	LEX	
15	6/86	JMP	REVISED PER ECR-50206	MGR	LEX	
14	6/86	JMP	REVISED PER ECR-50206	MGR	LEX	
13	6/86	JMP	REVISED PER ECR-50206	MGR	LEX	
12	6/86	JMP	REVISED PER ECR-50206	MGR	LEX	
11	6/86	JMP	REVISED PER ECR-50206	MGR	LEX	
10	6/86	JMP	REVISED PER ECR-50206	MGR	LEX	
9	6/86	JMP	REVISED PER ECR-50206	MGR	LEX	
8	6/86	JMP	REVISED PER ECR-50206	MGR	LEX	
7	6/86	JMP	REVISED PER ECR-50206	MGR	LEX	
6	6/86	JMP	REVISED PER ECR-50206	MGR	LEX	
5	6/86	JMP	REVISED PER ECR-50206	MGR	LEX	
4	6/86	JMP	REVISED PER ECR-50206	MGR	LEX	
3	6/86	JMP	REVISED PER ECR-50206	MGR	LEX	
2	6/86	JMP	REVISED PER ECR-50206	MGR	LEX	
1	6/86	JMP	REVISED PER ECR-50206	MGR	LEX	

D-62

