

November 10, 1987

Docket No. 50-482

Mr. Bart D. Withers
President and Chief Executive Officer
Wolf Creek Nuclear Operating Corporation
Post Office Box 411
Burlington, Kansas 66839

Dear Mr. Withers:

SUBJECT: WOLF CREEK GENERATING STATION - AMENDMENT NO. ¹³ TO FACILITY
OPERATING LICENSE NO. NPF-42 (TAC NO. 65903)

The Commission has issued the enclosed Amendment No. ¹³ to Facility Operating License No. NPF-42 for the Wolf Creek Generating Station. The amendment consists of changes to the Technical Specifications in response to your application dated July 28, 1987.

The amendment revises Technical Specification Figure 6.2-2 to reflect changes in organizational reporting relationships. Technical Specification 6.3.1 is also being revised to replace reference to the Site Health Physicist with a reference to the Radiation Protection Manager.

The first revision reflects changes in reporting relationships. The Medical and Safety Groups are being deleted from Figure 6.2-2 as they now report through the Operating Corporation Organization, Figure 6.2-1, to the Director Administrative Services. The Results Engineering Group previously reporting to the Superintendent of Plant Support now reports to the Superintendent of Technical Support. The Health Physics Group previously reporting to the Superintendent of Technical Support now reports to the Superintendent of Plant Support.

A copy of our related Safety Evaluation is enclosed. The notice of issuance will be included in the Commission's next bi-weekly Federal Register notice.

Sincerely,

¹⁵¹
Paul W. O'Connor, Project Manager
Project Directorate - IV
Division of Reactor Projects - III,
IV, V and Special Projects
Office of Nuclear Reactor Regulation

8711230222 871110
PDR ADDCK 05000482
P PDR

Enclosures:

1. Amendment No. 13 to
License No. NPF-42
 2. Safety Evaluation
- cc w/enclosures:

See next page

DISTRIBUTION

Docket File

P. Noonan

E. Jordan

T. Alexion

PD4-LA

PNoonan

10/22/87

NRC PDR

J. Calvo

J. Partlow

PD4-PM

PO'Connor

10/22/87

Local PDR

P. O'Connor

ACRS (10)

OGC-Beth

10/26/87

PD4 Reading

OGC-Bethesda

PD4 Plant File

PD4-D

JCalvo

11/10/87

Mr. Bart D. Withers
Wolf Creek Nuclear Operating Corporation

Wolf Creek Generating Station
Unit No. 1

cc:

Jay Silberg, Esq.
Shaw, Pittman, Potts & Trowbridge
1800 M Street, NW
Washington, D.C. 20036

Chris R. Rogers, P.E.
Manager, Electric Department
Public Service Commission
P. O. Box 360
Jefferson City, Missouri 65102

Regional Administrator, Region III
U.S. Nuclear Regulatory Commission
799 Roosevelt Road
Glen Ellyn, Illinois 60137

Senior Resident Inspector/Wolf Creek
c/o U. S. Nuclear Regulatory Commission
P. O. Box 311
Burlington, Kansas 66839

Mr. Robert Elliot, Chief Engineer
Utilities Division
Kansas Corporation Commission
4th Floor - State Office Building
Topeka, Kansas 66612-1571

Mr. Gerald Allen
Public Health Physicist
Bureau of Air Quality & Radiation
Control
Division of Environment
Kansas Department of Health
and Environment
Forbes Field Building 321
Topeka, Kansas 66620

Mr. Gary Boyer, Plant Manager
Wolf Creek Nuclear Operating Corp.
P. O. Box 411
Burlington, Kansas 66839

Regional Administrator, Region IV
U.S. Nuclear Regulatory Commission
Office of Executive Director
for Operations
611 Ryan Plaza Drive, Suite 1000
Arlington, Texas 76011

Mr. Otto Maynard, Manager Licensing
Wolf Creek Nuclear Operating Corp.
P. O. Box 411
Burlington, Kansas 66839



UNITED STATES
NUCLEAR REGULATORY COMMISSION
WASHINGTON, D. C. 20555

KANSAS GAS & ELECTRIC COMPANY
KANSAS CITY POWER AND LIGHT COMPANY
KANSAS ELECTRIC POWER COOPERATIVE, INC.
WOLF CREEK GENERATING STATION
DOCKET NO. 50-482
AMENDMENT TO FACILITY OPERATING LICENSE

Amendment No. 13
License No. NPF-42

1. The Nuclear Regulatory Commission (the Commission) has found that:
 - A. The application for amendment to the Wolf Creek Generating Station (the facility) Facility Operating License No. NPF-42 filed by Kansas Gas and Electric Company acting for itself and Kansas City Power and Light Company and Kansas Electric Power Cooperative, Inc., (licensees) dated July 28, 1987, complies with the standards and requirements of the Atomic Energy Act of 1954, as amended (the Act), and the Commission's rules and regulations set forth in 10 CFR Chapter I;
 - B. The facility will operate in conformity with the application, as amended, the provisions of the Act, and the rules and regulations of the Commission;
 - C. There is reasonable assurance: (i) that the activities authorized by this amendment can be conducted without endangering the health and safety of the public, and (ii) that such activities will be conducted in compliance with the Commission's regulations;
 - D. The issuance of this license amendment will not be inimical to the common defense and security or to the health and safety of the public; and
 - E. The issuance of this amendment is in accordance with 10 CFR Part 51 of the Commission's regulations and all applicable requirements have been satisfied.

8711230243 871110
PDR ADOCK 05000482
P PDR

2. Accordingly, the license is amended by changes to the Technical Specifications as indicated in the attachment to this license amendment and Paragraph 2.C.(2) of Facility Operating License No. NPF-42 is hereby amended to read as follows:

2. Technical Specification

The Technical Specifications contained in Appendix A, as revised through Amendment No. 13, and the Environmental Protection Plan contained in Appendix B, both of which are attached hereto, are hereby incorporated in the license. KG&E shall operate the facility in accordance with the Technical Specifications and the Environmental Protection Plan.

3. This license amendment is effective as of its date of issuance.

FOR THE NUCLEAR REGULATORY COMMISSION

Jose A. Calvo

Jose A. Calvo, Director
Project Directorate - IV
Division of Reactor Projects - III,
IV, V and Special Projects
Office of Nuclear Reactor Regulation

Attachment:
Changes to the Technical
Specifications

Date of Issuance: November 10, 1987

ATTACHMENT TO LICENSE AMENDMENT NO. 13

FACILITY OPERATING LICENSE NO. NPF-42

DOCKET NO. 50-482

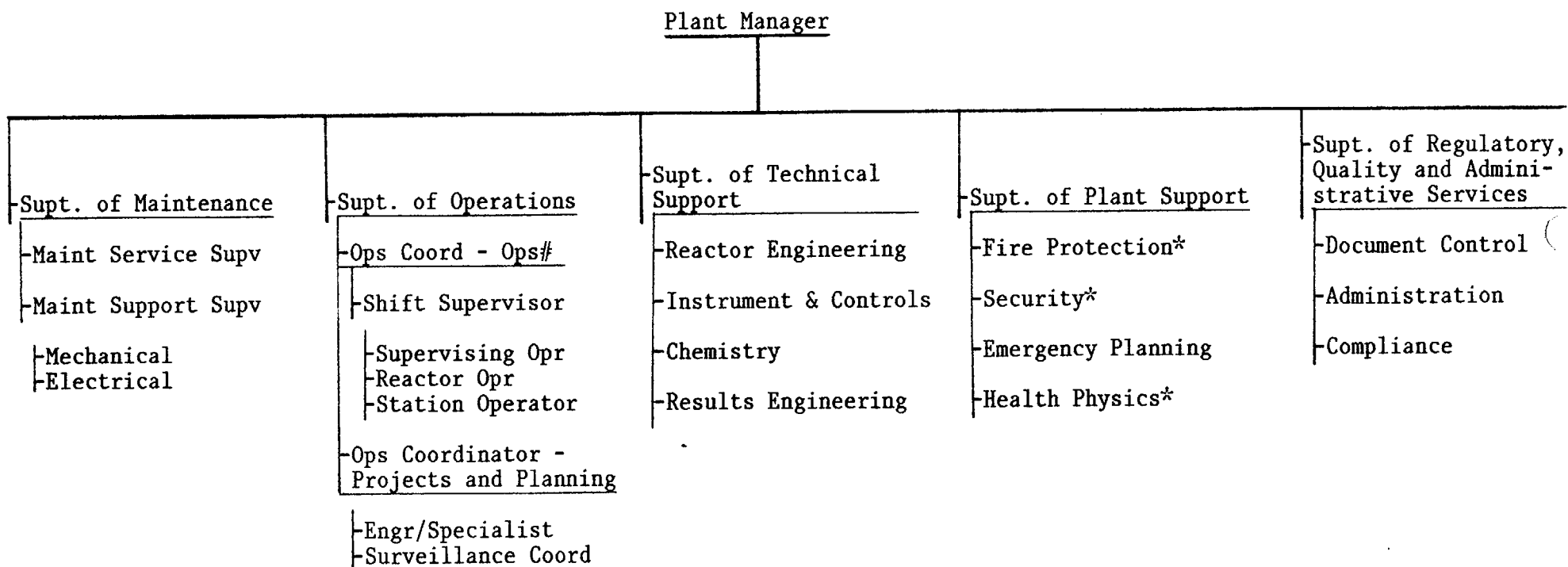
Revise Appendix A Technical Specifications by removing the pages identified below and inserting the enclosed pages. The revised pages are identified by amendment number and contain marginal lines indicating the area of change. The corresponding overleaf page is also provided to maintain document completeness.

REMOVE PAGES

6-4
6-6

INSERT PAGES

6-4
6-6



*For technical matters of an immediate nature the respective individual reports directly to the Plant Manager.

#This position requires an SRO License.

FIGURE 6.2-2 UNIT ORGNIZATION

TABLE 6.2-1
MINIMUM SHIFT CREW COMPOSITION

POSITION	NUMBER OF INDIVIDUALS REQUIRED TO FILL POSITION	
	MODE 1, 2, 3, or 4	MODE 5 or 6
SS	1	1*
SRO	1	None
RO	2	1
SO	4	1
STA	1**	None
CHM	1	None

SS - Shift Supervisor with a Senior Operator license on Unit 1
 SRO - Individual with a Senior Operator license on Unit 1
 RO - Individual with an Operator license on Unit 1
 SO - Station Operator
 STA - Shift Technical Advisor
 CHM - Chemistry Personnel

The Shift Crew Composition may be one less than the minimum requirements of Table 6.2-1 for a period of time not to exceed 2 hours in order to accommodate unexpected absence of on-duty shift crew members provided immediate action is taken to restore the Shift Crew Composition to within the minimum requirements of Table 6.2-1. This provision does not permit any shift crew position to be unmanned upon shift change due to an oncoming shift crewman being late or absent.

During any absence of the Shift Supervisor from the control room while the unit is in MODE 1, 2, 3, or 4, an individual (other than the Shift Technical Advisor) with a valid Senior Operator license shall be designated to assume the control room command function. During any absence of the Shift Supervisor from the control room while the Unit is in MODE 5 or 6, an individual with a valid Operator license (other than the Shift Technical Advisor) shall be designated to assume the control room command function.

*One SRO, either Shift Supervisor or Supervising Operator.

**The STA position shall be manned in MODES 1, 2, 3, and 4 unless the Shift Supervisor or the individual with a Senior Operator license meets the qualifications for the STA as required by the NRC.

ADMINISTRATIVE CONTROLS

6.2.3 INDEPENDENT SAFETY ENGINEERING GROUP (ISEG)

FUNCTION

6.2.3.1 The ISEG shall function to examine plant operating characteristics, NRC issuances, industry advisories, REPORTABLE EVENTS and other sources of plant design and operating experience information, including plants of similar design, which may indicate areas for improving plant safety. The ISEG shall make detailed recommendations for revised procedures, equipment modifications, maintenance activities, operations activities or other means of improving plant safety to the Chairman Nuclear Safety Review Committee.

COMPOSITION

6.2.3.2 The ISEG shall be composed of at least five, dedicated, full-time engineers located on site. Each shall have a bachelor's degree in engineering or related science and at least 2 years professional level experience in his field.

RESPONSIBILITIES

6.2.3.3 The ISEG shall be responsible for maintaining surveillance of plant activities to provide independent verification* that these activities are performed correctly and that human errors are reduced as much as practical.

RECORDS

6.2.3.4 Records of activities performed by the ISEG shall be prepared, maintained, and forwarded each calendar month to Chairman Nuclear Safety Review Committee.

6.2.4 SHIFT TECHNICAL ADVISOR

The Shift Technical Advisor (STA)** shall provide technical support to the Shift Supervisor in the areas of thermal hydraulics, reactor engineering and plant analysis with regard to the safe operation of the Unit.

6.3 UNIT STAFF QUALIFICATIONS

6.3.1 Each member of the Unit Staff shall meet or exceed the minimum qualifications of ANSI/ANS 3.1-1978, except for the Radiation Protection Manager who shall meet or exceed the qualifications of Regulatory Guide 1.8, September 1975. The licensed Operators and Senior Operators shall also meet or exceed the minimum qualifications of the supplemental requirements specified in Sections A and C of Enclosure 1 of the March 28, 1980 NRC letter to all licensees.

*Not responsible for sign-off function.

**The STA position shall be manned in MODES 1, 2, 3, and 4 unless the Shift Supervisor or the individual with a Senior Operator license meets the qualifications for the STA as required by the NRC.



UNITED STATES
NUCLEAR REGULATORY COMMISSION
WASHINGTON, D. C. 20555

SAFETY EVALUATION BY THE OFFICE OF NUCLEAR REACTOR REGULATION
SUPPORTING AMENDMENT NO. 13 TO FACILITY OPERATING LICENSE NO. NPF-42

KANSAS GAS & ELECTRIC COMPANY

KANSAS CITY POWER AND LIGHT COMPANY

KANSAS ELECTRIC POWER COOPERATIVE, INC.

WOLF CREEK GENERATING STATION

DOCKET NO. 50-482

INTRODUCTION

By letter dated July 28, 1987, Wolf Creek Nuclear Operating Corporation requested changes to the Administrative Controls Section of the Technical Specification for the Wolf Creek Generating Station, Unit No. 1. Following is a brief description and our evaluation of the requested changes.

EVALUATION

1. Figure 6.2-2, Unit Organization

The licensee has revised the unit organization, Figure 6.2-2, by transferring the Health Physics functional unit from the Superintendent Technical Support to the Superintendent of Plant Support, the Results Engineering functional unit from the Superintendent of Plant Support to the Superintendent of Technical Support, and deleting the Medical and Safety Groups from Figure 6.2-2 as they now report through the Operating Corporation Organization, Figure 6.2-1.

We find these requested changes acceptable as they do not delete any of the technical support necessary for the operation of the Wolf Creek Generating Station Unit No. 1, and they meet the acceptance criteria of Section 13.1.2-13.1.3 of NUREG-0800, the Standard Review Plan.

2. Section 6.3, Unit Staff Qualifications

The licensee has revised the statement on unit staff qualifications from "Each member of the Unit Staff shall meet or exceed the minimum qualifications of ANSI/ANS 3.1-1978, except for the Site Health Physicist who shall meet or exceed the qualifications of Regulatory Guide 1.8, 1975 for a Radiation Protection Manager" to "Each member of the Unit Staff shall meet or exceed the minimum qualifications of ANSI/ANS 3.1-1978, except for the Radiation Protection manager who shall meet or exceed the qualifications of Regulatory Guide 1.8, September 1975."

We find this requested change acceptable as it is consistent with the corresponding wording of the Standard Technical Specifications.

ENVIRONMENTAL CONSIDERATION

The amendment involves a change in the installation or use of a facility component located within the restricted area as defined in 10 CFR Part 20 or in a surveillance requirement. The staff has determined that the amendment involves no significant increase in the amounts, and no significant change in the types, of any effluents that may be released offsite, and that there is no significant increase in individual or cumulative occupational radiation exposures. The Commission has previously issued a proposed finding that the amendment involves no significant hazards consideration and there has been no public comment on such finding. Accordingly, the amendment meets the eligibility criteria for categorical exclusion set forth in 10 CFR Section 51.22(c)(9). Pursuant to 10 CFR 51.22(b), no environmental impact statement or environmental assessment need be prepared in connection with the issuance of the amendment.

CONCLUSION

The staff has concluded, based on the considerations discussed above, that: (1) there is reasonable assurance that the health and safety of the public will not be endangered by operation in the proposed manner, and (2) such activities will be conducted in compliance with the Commission's regulations, and the issuance of the amendment will not be inimical to the common defense and security or to the health and safety of the public.

Date: November 10, 1987

Principal Contributors: Frederick Allenspach
Paul W. O'Connor