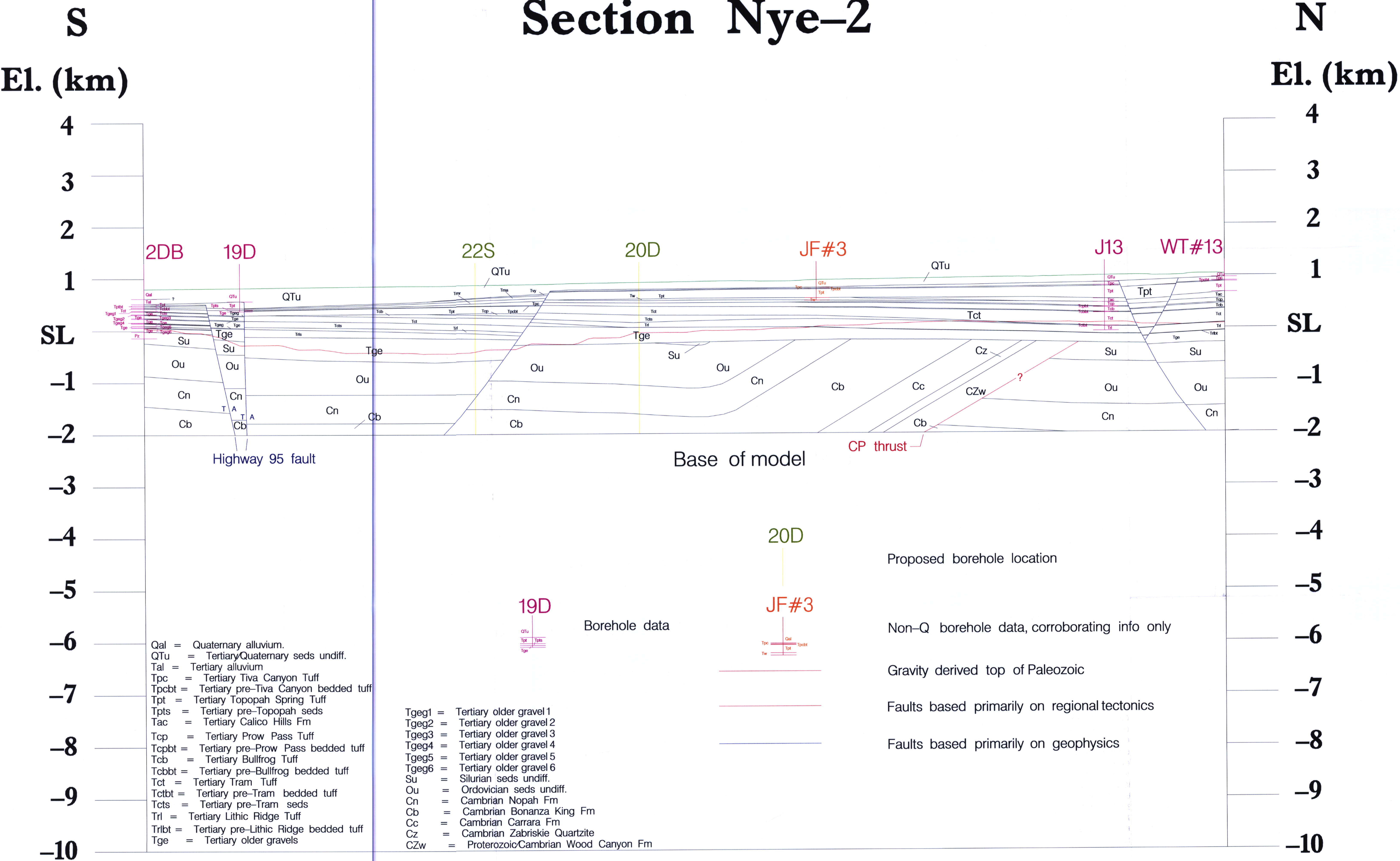


Section Nye-2



- Qal = Quaternary alluvium.
- QTu = Tertiary/Quaternary seds undiff.
- Tal = Tertiary alluvium
- Tpc = Tertiary Tiva Canyon Tuff
- Tpcb = Tertiary pre-Tiva Canyon bedded tuff
- Tpt = Tertiary Topopah Spring Tuff
- Tpts = Tertiary pre-Topopah seds
- Tac = Tertiary Calico Hills Fm
- Tcp = Tertiary Prow Pass Tuff
- Tcpbt = Tertiary pre-Prow Pass bedded tuff
- Tcb = Tertiary Bullfrog Tuff
- Tcbbt = Tertiary pre-Bullfrog bedded tuff
- Tct = Tertiary Tram Tuff
- Tctbt = Tertiary pre-Tram bedded tuff
- Tcts = Tertiary pre-Tram seds
- Tri = Tertiary Lithic Ridge Tuff
- Trlbt = Tertiary pre-Lithic Ridge bedded tuff
- Tge = Tertiary older gravels

- Tgeg1 = Tertiary older gravel 1
- Tgeg2 = Tertiary older gravel 2
- Tgeg3 = Tertiary older gravel 3
- Tgeg4 = Tertiary older gravel 4
- Tgeg5 = Tertiary older gravel 5
- Tgeg6 = Tertiary older gravel 6
- Su = Silurian seds undiff.
- Ou = Ordovician seds undiff.
- Cn = Cambrian Nopah Fm
- Cb = Cambrian Bonanza King Fm
- Cc = Cambrian Carrara Fm
- Cz = Cambrian Zabriskie Quartzite
- CZw = Proterozoic/Cambrian Wood Canyon Fm

D-2