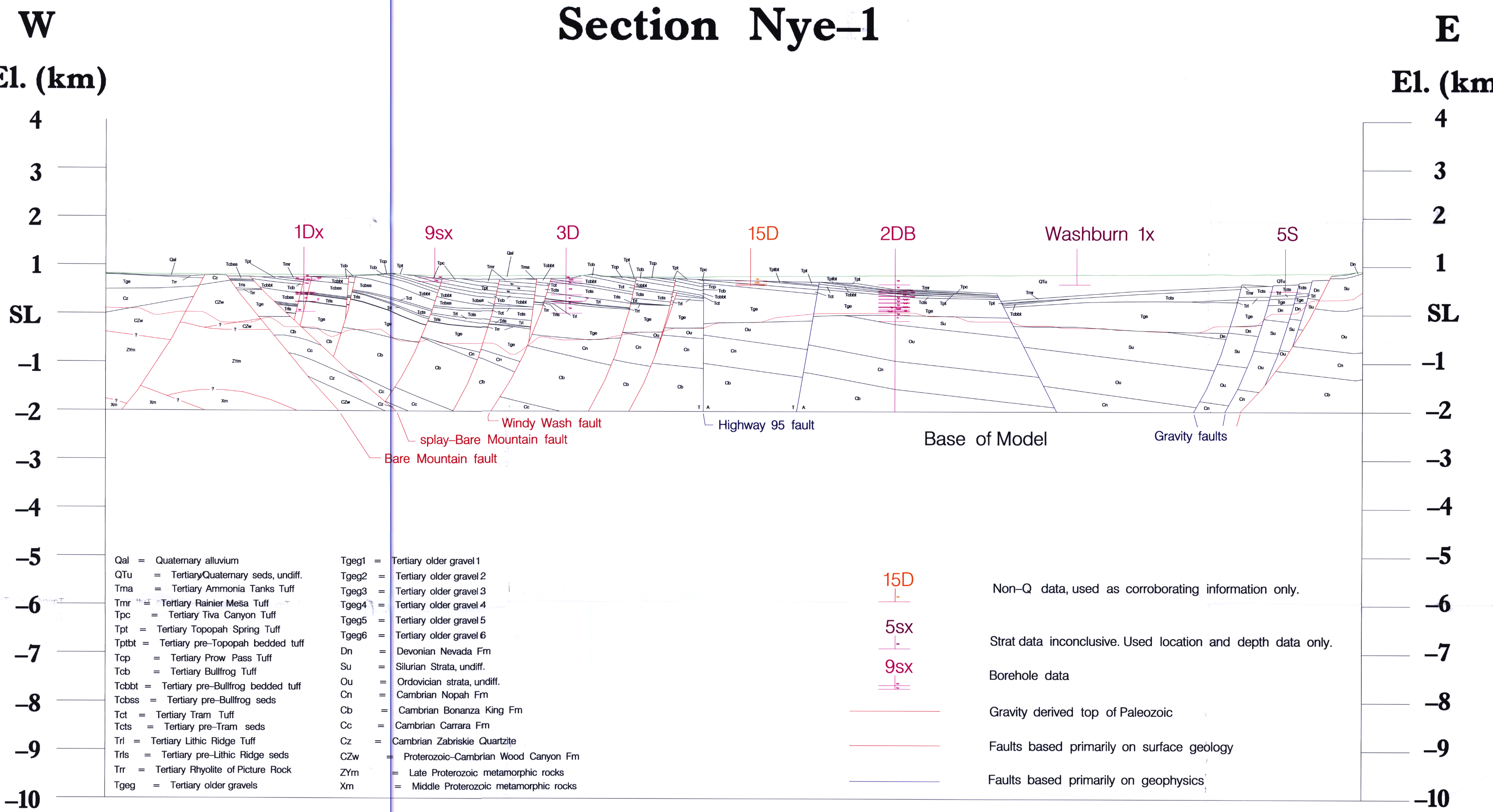


Section Nye-1



- | | |
|---|---|
| Qal = Quaternary alluvium | Tgeg1 = Tertiary older gravel 1 |
| QTu = Tertiary/Quaternary seds, undiff. | Tgeg2 = Tertiary older gravel 2 |
| Tma = Tertiary Ammonia Tanks Tuff | Tgeg3 = Tertiary older gravel 3 |
| Tmr = Tertiary Rainier Mesa Tuff | Tgeg4 = Tertiary older gravel 4 |
| Tpc = Tertiary Tiva Canyon Tuff | Tgeg5 = Tertiary older gravel 5 |
| Tpt = Tertiary Topopah Spring Tuff | Tgeg6 = Tertiary older gravel 6 |
| Tptbt = Tertiary pre-Topopah bedded tuff | Dn = Devonian Nevada Fm |
| Tcp = Tertiary Prow Pass Tuff | Su = Silurian Strata, undiff. |
| Tcb = Tertiary Bullfrog Tuff | Ou = Ordovician strata, undiff. |
| Tcbbt = Tertiary pre-Bullfrog bedded tuff | Cn = Cambrian Nopah Fm |
| Tcbss = Tertiary pre-Bullfrog seds | Cb = Cambrian Bonanza King Fm |
| Tct = Tertiary Tram Tuff | Cc = Cambrian Carrara Fm |
| Tcts = Tertiary pre-Tram seds | Cz = Cambrian Zabriskie Quartzite |
| Trl = Tertiary Lithic Ridge Tuff | CZw = Proterozoic-Cambrian Wood Canyon Fm |
| Trls = Tertiary pre-Lithic Ridge seds | ZYm = Late Proterozoic metamorphic rocks |
| Trr = Tertiary Rhyolite of Picture Rock | Xm = Middle Proterozoic metamorphic rocks |
| Tgeg = Tertiary older gravels | |

- 15D Non-Q data, used as corroborating information only.
- 5sx Strat data inconclusive. Used location and depth data only.
- 9sx Borehole data
- Gravity derived top of Paleozoic
- Faults based primarily on surface geology
- Faults based primarily on geophysics