

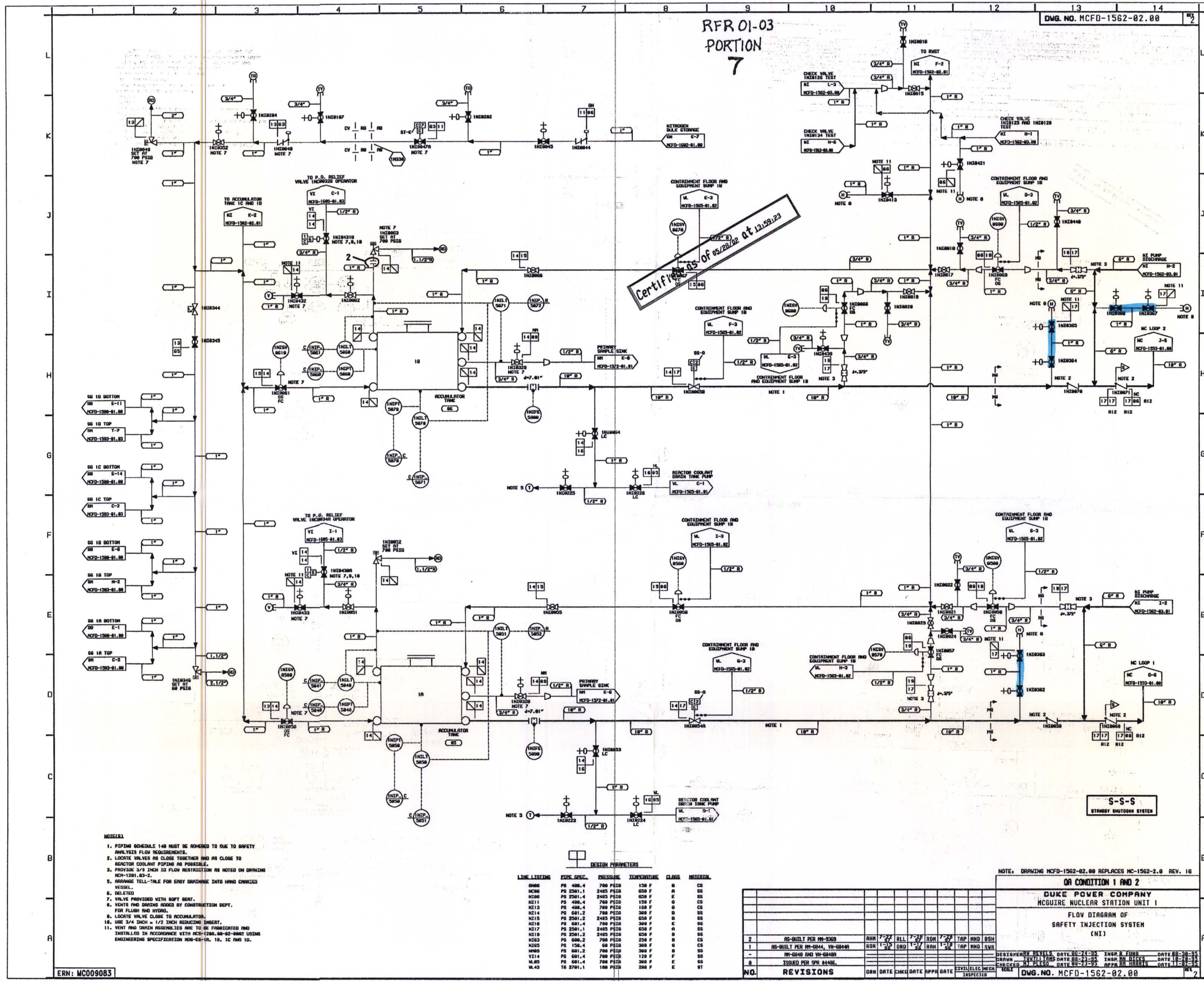
RFR 01-03
PORTION
7

DWG. NO. MCFD-1562-02.00

RFR 01-03

Attachment

Page 11 of 12



Certified as of 05/28/02 at 13:59:23

- NOTES:
1. PIPING SCHEDULE 148 MUST BE APPLIED TO ALL TO SAFETY ANALYSIS FLOW REQUIREMENTS.
 2. LOCATE VALVES AS CLOSE TOGETHER AND AS CLOSE TO REACTOR COOLANT PIPING AS POSSIBLE.
 3. PROVIDE 3/4 INCH ID FLOW RESTRICTION AS NOTED ON DRAWING MCFD-1561-02-2.
 4. ARRANGE TELL-TALE FOR EASY DRAINING INTO WARD CHARGED VESSEL.
 5. OMISSIONS:
 6. VALVE PROVIDED WITH SOFT SEAT.
 7. LOCATE VALVE CLOSE TO ACCUMULATOR.
 8. USE 3/4 INCH = 1/2 INCH REDUCING INSERT.
 9. VENT AND DRAIN HOSELINE AS TO BE FABRICATED AND INSTALLED IN ACCORDANCE WITH MCFD-1564-02-0002 USING ENGINEERING SPECIFICATION MCFD-ES-1A, 1B, 1C AND 1D.

DESIGN PARAMETERS

LINE LETTER	PIPE SPEC.	DESIGN PRESSURE	TEMPERATURE	CLASS	MATERIAL
M006	PS 400.4	700 PSIG	150 F	B	CS
M006	PS 2501.1	2405 PSIG	620 F	A	SS
M100	PS 2501.4	2405 PSIG	620 F	E	SS
M211	PS 400.4	700 PSIG	150 F	O	CS
M213	PS 400.4	700 PSIG	150 F	O	CS
M214	PS 601.2	700 PSIG	300 F	D	SS
M215	PS 2501.2	2405 PSIG	620 F	O	SS
M218	PS 601.4	700 PSIG	300 F	E	SS
M217	PS 2501.1	2405 PSIG	620 F	A	SS
M218	PS 2501.2	2405 PSIG	620 F	O	SS
M203	PS 600.2	700 PSIG	250 F	B	CS
M205	PS 150.4	60 PSIG	200 F	O	SS
M209	PS 601.2	700 PSIG	300 F	D	SS
V214	PS 601.4	700 PSIG	120 F	F	SS
M202	PS 601.4	700 PSIG	300 F	F	SS
M203	TS 2701.1	180 PSIG	200 F	E	ST

NOTE: DRAWING MCFD-1562-02.00 REPLACES MCFD-1562-2.0 REV. 10

NO.	REVISIONS	DRW	DATE	CHECK	DATE	APP'D	DATE	REVISED	BY	DATE	INSPECTED
2	AS-BUILT PER MCFD-1562-02.00	AWH	7-27-02	ALL	7-27-02	ROH	7-27-02	TAP	RND	BSH	
1	AS-BUILT PER MCFD-1562-02.00	ROH	1-27-02	DRW	1-27-02	RAH	1-27-02	TAP	RND	BSH	
0	ISSUED PER MCFD-1562-02.00										

OR CONDITION 1 AND 2
DUKE POWER COMPANY
MCQUIRE NUCLEAR STATION UNIT 1
FLOW DIAGRAM OF
SAFETY INJECTION SYSTEM
(NI)

ERN: MCO09083

D-11