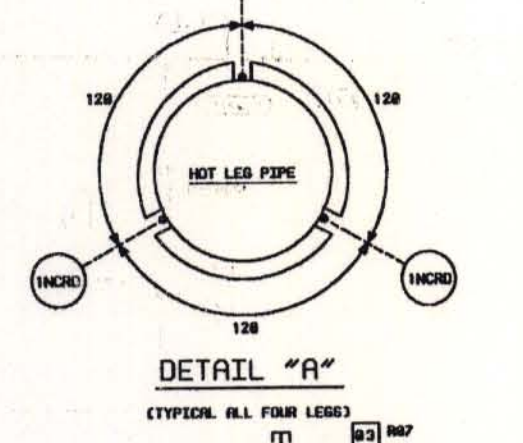
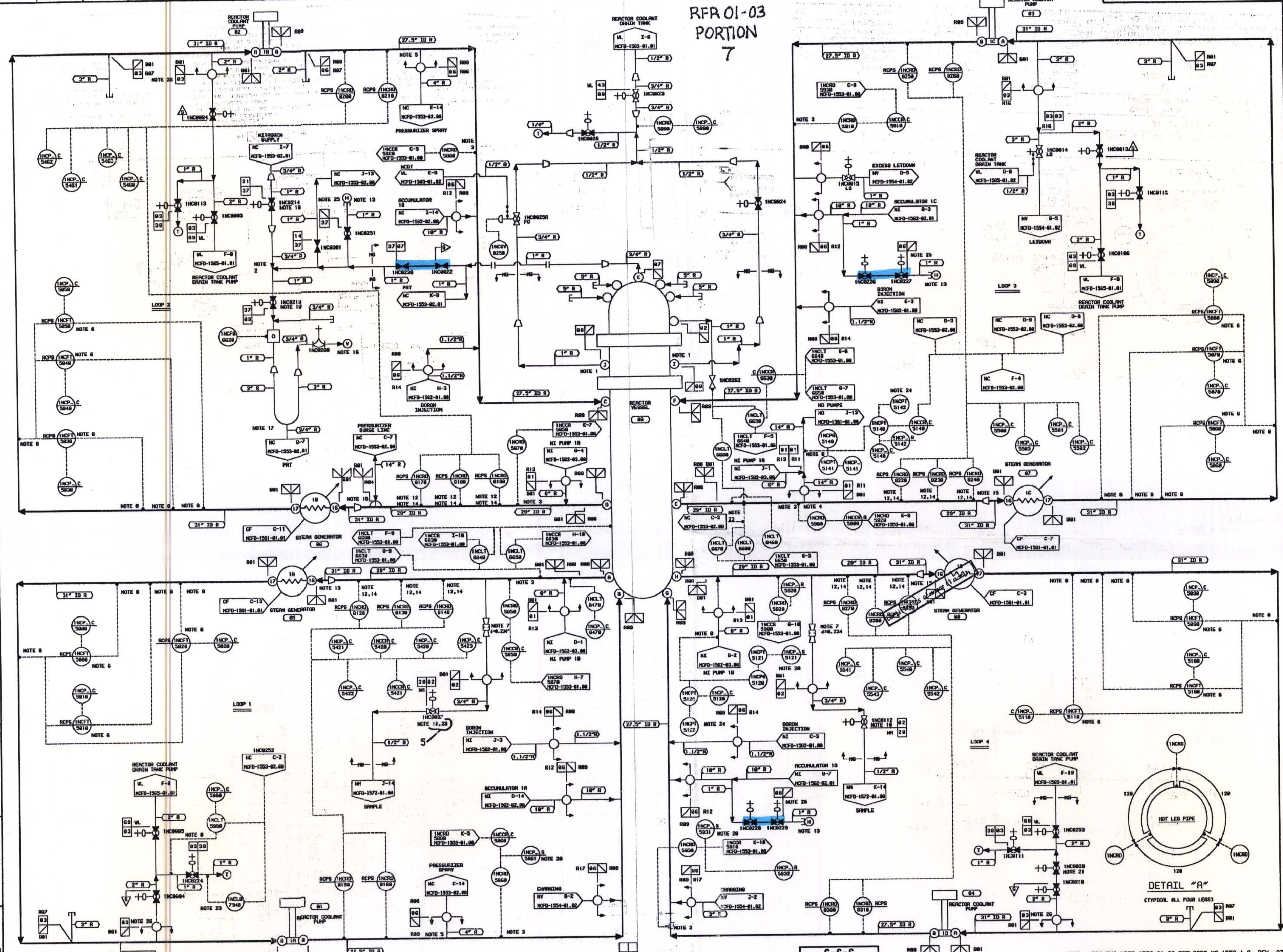


RFR 01-03
PORTION
7

RFR 01-03
Attachment
Page 9 of 12



NOTES:

- HEAD BRACKET MONITORING CONNECTIONS FURNISHED WITH REACTOR VESSEL.
- THE NITROGEN SUPPLY LINE IN TO TOP OF VESSEL HEAD VENT LINE.
- RESTRICTOR TEMPERATURE DEVICES INSTALLED IN HEAD.
- LOCATE CONNECTION IN BOTH HALF OF REACTOR COOLANT PIPING ON 45 DEGREE ANGLE TO VERTICAL.
- SPRAY LINE SCOOP.
- ALARM FLOW WEIGHS.
- FLOW RESTRICTOR AT CLASS CHANGE, 1.85 "OD" AND 0.234 "ID".
- 3/4" DICH TO FLOW RESTRICTOR REQUIRED.
- DELETED.
- USE REDUCING ELEMENT.
- DELETED.

12. HOT LEG BYPASS LINE OCCURS, WHERE APPLICABLE LOCATE UPSTREAM OF BARGE LINE.

13. VENTS PROVED BY CONSTRUCTION.

14. SEE DETAIL 'A' ON THIS DWG. FOR R.T.D. ORIENTATION.

15. 31" X 23" REDUCING ELBOW.

16. ROUTE VENT TO Suction SIDE OF CONTAINMENT MAINDRY CONVEN FILTER THRU EITHER IN OR OUT.

17. THIS LOOP SHOULD CONTAIN THE EQUIVALENT OF AT LEAST 18 LITER OF PART OF 3 INCH PIPE.

18. LOCATE VALVE INCR219 AND INCR214 NEAR SIGHT GLASS.

19. DELETED.

20. REACTOR TO BE LOCATED IN STANDBY SHUTDOWN FACILITY.

21. THE MOTOR WILL BE LEFT ON VALVE INCR209.

22. NO ELECTRICAL POWER TO BE PROVIDED FOR THIS VALVE, IT WILL BE OPERATED WITH THE INCR209.

22. DELETED.

23. INSTRUMENTS WILL BE DISCONNECTED PRIOR TO SYSTEM PRESSURIZATION.

24. VALVE OUT DURING NORMAL OPERATION TO BE USED DURING LOW TEMPERATURE OVER-PRESSURE PROTECTION MODE.

25. VENT AND DRAIN ASSEMBLY ARE TO BE PROVIDED AND INSTALLED IN ACCORDANCE WITH INCR-1206-00-02-DWG-004-EMERGENCY SPECIFICATIONS FOR 500 F AND 500 PSID.

26. SEE INCR-1206-13-0013-005, 006 AND 007 FOR REFLECTIVE IDENTIFICATION LOCATIONS AND WEIGHS.

27. PIPING HAS BEEN ANALYZED FOR 500 F AND 500 PSID.

28. VALVE IS OPEN TO PROVIDE CONTAINMENT PENETRATION OVERPRESSURIZATION PROTECTION.

29. DELETED.

LINE LISTING

LINE NO.	PIPE SPEC.	PRESSURE	TEMPERATURE	CLASS	NOTES
INCR1	PG 2501.1	2405 PSID	508 F	A	08
INCR2	PG 2501.2	2405 PSID	508 F	A	08
INCR3	PG 2501.1	2405 PSID	508 F	A	08
INCR4	PG 2501.1	2405 PSID	508 F	A	08
INCR5	PG 2501.1	2405 PSID	508 F	A	08
INCR6	PG 2501.2	2405 PSID	508 F	A	08
INCR7	PG 2501.4	2405 PSID	488 F	E	08
INCR8	PG 2501.2	2405 PSID	478 F	E	08
INCR9	PG 2501.4	2405 PSID	488 F	E	08
INCR10	PG 2501.4	2405 PSID	488 F	E	08
INCR11	PG 2501.4	2405 PSID	488 F	E	08
INCR12	PG 2501.4	2405 PSID	488 F	E	08
INCR13	PG 2501.4	2405 PSID	488 F	E	08
INCR14	PG 2501.4	2405 PSID	488 F	E	08
INCR15	PG 2501.4	2405 PSID	488 F	E	08
INCR16	PG 2501.4	2405 PSID	488 F	E	08
INCR17	PG 2501.4	2405 PSID	488 F	E	08
INCR18	PG 2501.4	2405 PSID	488 F	E	08
INCR19	PG 2501.4	2405 PSID	488 F	E	08
INCR20	PG 2501.4	2405 PSID	488 F	E	08
INCR21	PG 2501.4	2405 PSID	488 F	E	08
INCR22	PG 2501.4	2405 PSID	488 F	E	08
INCR23	PG 2501.4	2405 PSID	488 F	E	08
INCR24	PG 2501.4	2405 PSID	488 F	E	08
INCR25	PG 2501.4	2405 PSID	488 F	E	08
INCR26	PG 2501.4	2405 PSID	488 F	E	08
INCR27	PG 2501.4	2405 PSID	488 F	E	08
INCR28	PG 2501.4	2405 PSID	488 F	E	08
INCR29	PG 2501.4	2405 PSID	488 F	E	08
INCR30	PG 2501.4	2405 PSID	488 F	E	08

S-S-S STANDBY SHUTDOWN SYSTEM

NO.	REVISIONS	DATE	BY	CHKD	DATE	APP'D	DATE	CIVIL/ELEC/MECH	DATE
5	AS-BUILT PER NCR-12010	JAC	11/27/87	DHM	11/27/87	RDH	11/27/87	LSV	11/27/87
4	AS-BUILT PER NCR-11375	RDH	11/27/87	ECK	11/27/87	LSV	11/27/87	HYD	11/27/87
3	AS-BUILT PER NCR-9480	RDH	11/27/87	LSV	11/27/87	LSV	11/27/87	RDH	11/27/87
2	REV. PER EXPANDED CODE 0-6	RDH	11/27/87	LSV	11/27/87	LSV	11/27/87	RDH	11/27/87
1	AS-BUILT PER NCR-151010	RDH	11/27/87	LSV	11/27/87	LSV	11/27/87	RDH	11/27/87
0	ISSUED FOR SPS 84505	RDH	11/27/87	LSV	11/27/87	LSV	11/27/87	RDH	11/27/87

OR CONDITION 1 AND 2
DUKE POWER COMPANY
MCQUIRE NUCLEAR STATION UNIT 1
FLOW DIAGRAM OF
REACTOR COOLANT SYSTEM
(NC)

NOTE: DRAWING MCFD-1553-01.00 REPLACES MC-1553-1.0 REV. 37

DATE: 11-27-87
DRAWN: RDH
CHECKED: LSV
DATE: 11-27-87
APP'D: RDH
DATE: 11-27-87
CIVIL/ELEC/MECH: LSV
DATE: 11-27-87

DWG. NO. MCFD-1553-01.00

D-9