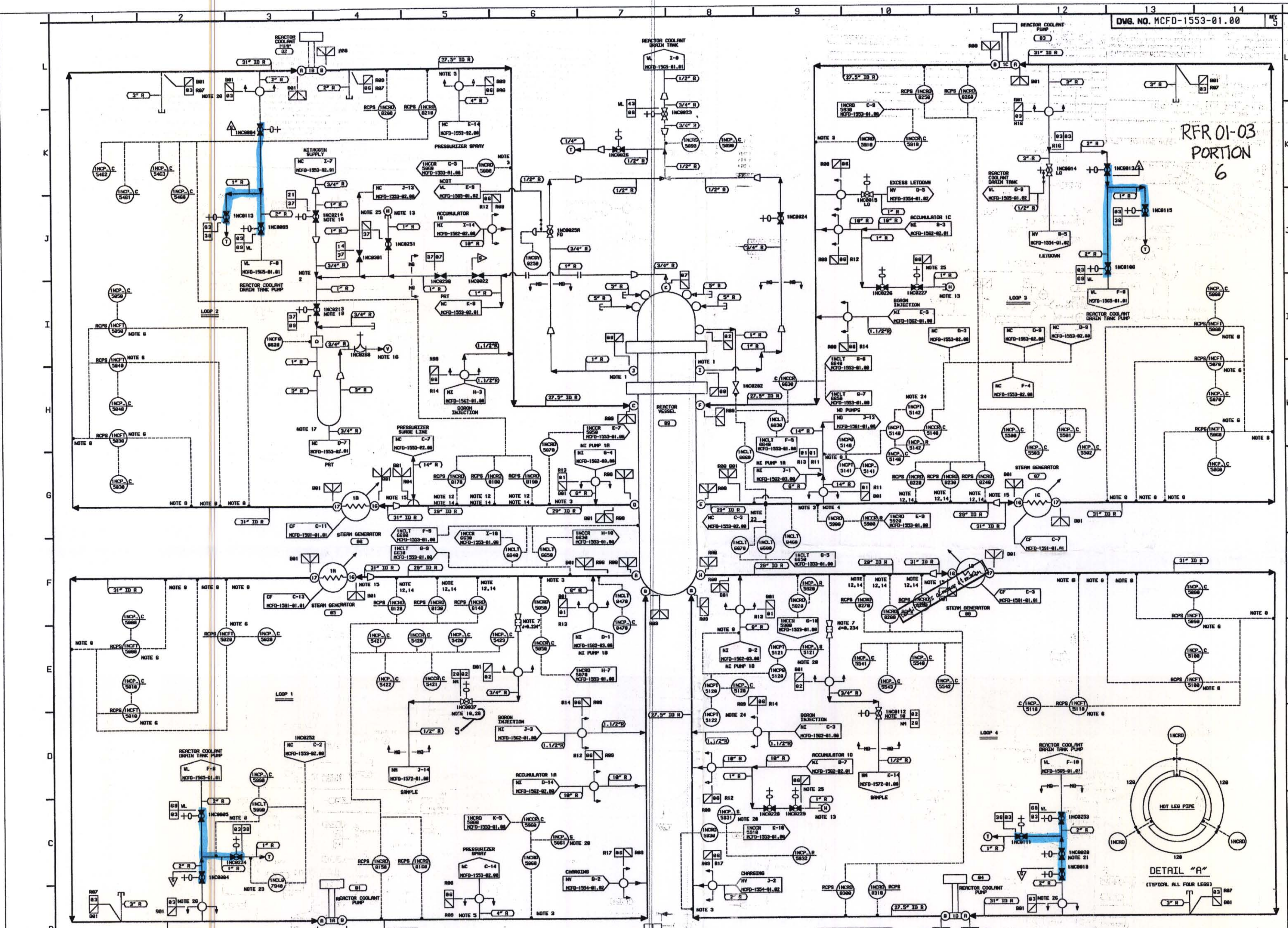


RFR 01-03

Attachment

Page 8 of 12

RFR 01-03  
PORTION  
6



- NOTES:
1. HEAD BRACKET MONITORING CONNECTIONS FURNISHED WITH REACTOR VESSEL.
  2. THE NITROGEN SUPPLY LINE IN TO TOP OF VESSEL HEAD VENT LINE.
  3. RESISTANCE TEMPERATURE DEVICES INSTALLED IN WELL.
  4. LOCATE CONNECTION IN BOTTOM HALF OF REACTOR COOLANT PIPING OR 45 DEGREE ANGLE TO VERTICAL.
  5. SPRAY LINE SCOP.
  6. ELBOW FLOW METERS.
  7. FLOW RESTRICTOR AT CLASS CHANGE, 1.05 "OD" AND 0.254 "ID".
  8. 3/8 INCH 30 FLW RESTRICTOR REQUIRED.
  9. DELETED.
  10. LOCATE VALVES INCR213 AND INCR214 NEAR SIGHT GLASS.
  11. OPERATOR CAN OBSERVE SIGHT GLASS WHILE VENTING SYSTEM.
  12. DELETED.
  13. DELETED.
  14. USE REDUCING INSERT.
  15. DELETED.
  16. USE REDUCING INSERT.
  17. NO ELECTRIC POWER IS REQUIRED FOR THE VALVE, IT WILL BE OPERATED WITH THE HYDRAULIC.

18. HOT LEG OVERFLOW LINE SCOPES, WHERE APPLICABLE LOCATE UPSTREAM OF SURGE LINE.
19. VENTS PROVED BY CONSTRUCTION.
20. SEE DETAIL A ON THIS DRAW. FOR R.T.O. ORIENTATION.
21. 31" X 2 3/4" INSULATING ELBOW.
22. INSULATE VENT TO DUCTION SIDE OF CONTAINMENT FACILITY SPRAY CHAMBER FOR THE THERM WELLER 1A OR 1B3.
23. THIS LOOP SHOULD CONTAIN THE EQUIVALENT OF AT LEAST 150 LITERS FEET OF 2 INCH PIPES.
24. LOCATE VALVES INCR213 AND INCR214 NEAR SIGHT GLASS.
25. OPERATOR CAN OBSERVE SIGHT GLASS WHILE VENTING SYSTEM.
26. DELETED.
27. REBOUND TO BE LOCATED IN STANDBY SHUTDOWN FACILITY.
28. THE MOTOR WILL BE LEFT ON VALVE INCR208.
29. DELETED.
30. NO ELECTRIC POWER IS REQUIRED FOR THE VALVE, IT WILL BE OPERATED WITH THE HYDRAULIC.

31. DELETED.
32. DELETED.
33. DELETED.
34. DELETED.
35. DELETED.
36. DELETED.
37. DELETED.
38. DELETED.
39. DELETED.
40. DELETED.
41. DELETED.
42. DELETED.
43. DELETED.
44. DELETED.
45. DELETED.
46. DELETED.
47. DELETED.
48. DELETED.
49. DELETED.
50. DELETED.
51. DELETED.
52. DELETED.
53. DELETED.
54. DELETED.
55. DELETED.
56. DELETED.
57. DELETED.
58. DELETED.
59. DELETED.
60. DELETED.
61. DELETED.
62. DELETED.
63. DELETED.
64. DELETED.
65. DELETED.
66. DELETED.
67. DELETED.
68. DELETED.
69. DELETED.
70. DELETED.
71. DELETED.
72. DELETED.
73. DELETED.
74. DELETED.
75. DELETED.
76. DELETED.
77. DELETED.
78. DELETED.
79. DELETED.
80. DELETED.
81. DELETED.
82. DELETED.
83. DELETED.
84. DELETED.
85. DELETED.
86. DELETED.
87. DELETED.
88. DELETED.
89. DELETED.
90. DELETED.
91. DELETED.
92. DELETED.
93. DELETED.
94. DELETED.
95. DELETED.
96. DELETED.
97. DELETED.
98. DELETED.
99. DELETED.
100. DELETED.

LINE LISTING

LINE NO.	PIPE SPEC.	PRESSURE	TEMPERATURE	CLASS	MATERIAL
INC01	PG 2001-1	2405 PSIG	650 F	A	SS
INC02	PG 2001-2	2405 PSIG	650 F	A	SS
INC03	PG 2001-1	2405 PSIG	650 F	A	SS
INC04	PG 2001-1	2405 PSIG	650 F	A	SS
INC05	PG 2001-1	2405 PSIG	650 F	A	SS
INC06	PG 2001-2	2405 PSIG	650 F	A	SS
INC07	PG 2001-4	50 PSIG	400 F	C	SS
INC08	PG 001-4	500 PSIG	470 F	E	SS
INC09	PG 101-4	100 PSIG	200 F	F	SS
INC10	PG 2001-4	2405 PSIG	650 F	A	SS
INC11	PG 2001-4	2405 PSIG	650 F	A	SS
INC12	PG 2001-2	2405 PSIG	650 F	A	SS
INC13	PG 2001-2	2405 PSIG	650 F	A	SS
INC14	PG 2001-4	2405 PSIG	650 F	A	SS
INC15	PG 2001-4	2405 PSIG	650 F	A	SS
INC16	PG 2001-4	2405 PSIG	650 F	A	SS
INC17	PG 2001-4	2405 PSIG	650 F	A	SS
INC18	PG 2001-4	2405 PSIG	650 F	A	SS
INC19	PG 2001-4	2405 PSIG	650 F	A	SS
INC20	PG 2001-4	2405 PSIG	650 F	A	SS
INC21	PG 2001-4	2405 PSIG	650 F	A	SS
INC22	PG 2001-4	2405 PSIG	650 F	A	SS
INC23	PG 2001-4	2405 PSIG	650 F	A	SS
INC24	PG 2001-4	2405 PSIG	650 F	A	SS
INC25	PG 2001-4	2405 PSIG	650 F	A	SS
INC26	PG 2001-4	2405 PSIG	650 F	A	SS
INC27	PG 2001-4	2405 PSIG	650 F	A	SS
INC28	PG 2001-4	2405 PSIG	650 F	A	SS
INC29	PG 2001-4	2405 PSIG	650 F	A	SS
INC30	PG 2001-4	2405 PSIG	650 F	A	SS
INC31	PG 2001-4	2405 PSIG	650 F	A	SS
INC32	PG 2001-4	2405 PSIG	650 F	A	SS
INC33	PG 2001-4	2405 PSIG	650 F	A	SS
INC34	PG 2001-4	2405 PSIG	650 F	A	SS
INC35	PG 2001-4	2405 PSIG	650 F	A	SS
INC36	PG 2001-4	2405 PSIG	650 F	A	SS
INC37	PG 2001-4	2405 PSIG	650 F	A	SS
INC38	PG 2001-4	2405 PSIG	650 F	A	SS
INC39	PG 2001-4	2405 PSIG	650 F	A	SS
INC40	PG 2001-4	2405 PSIG	650 F	A	SS

REVISIONS

NO.	DATE	CHKD	DATE	APPD	DATE	BY	DATE	INSPECTED
1	AS-BUILT PER NEM-12010	JAC	11-27	DHM	11-27	BDH	11-27	LSV
2	REV. PER EXCEPTION CODE C-5	RRR	11-27	ECK	11-27	JDM	11-27	HVD
3	REV. PER NEM-11275	ARR	11-27	BDH	11-27	JDM	11-27	ARS
4	REV. PER NEM-8480	ARR	11-27	BDH	11-27	JDM	11-27	ARS
5	REV. PER NEM-12010	JAC	11-27	DHM	11-27	BDH	11-27	LSV
6	REV. PER NEM-11275	RRR	11-27	ECK	11-27	JDM	11-27	HVD
7	REV. PER NEM-8480	ARR	11-27	BDH	11-27	JDM	11-27	ARS
8	REV. PER NEM-12010	JAC	11-27	DHM	11-27	BDH	11-27	LSV
9	REV. PER NEM-11275	RRR	11-27	ECK	11-27	JDM	11-27	HVD
10	REV. PER NEM-8480	ARR	11-27	BDH	11-27	JDM	11-27	ARS

NOTE, DRAWING MCFD-1553-01.00 REPLACES MC-1553-1.0 REV. 37

OR CONDITION 1 AND 2

DUKE POWER COMPANY  
MCUIRE NUCLEAR STATION UNIT 1

FLOW DIAGRAM OF  
REACTOR COOLANT SYSTEM  
(NC)

DWG. NO. MCFD-1553-01.00

D-8