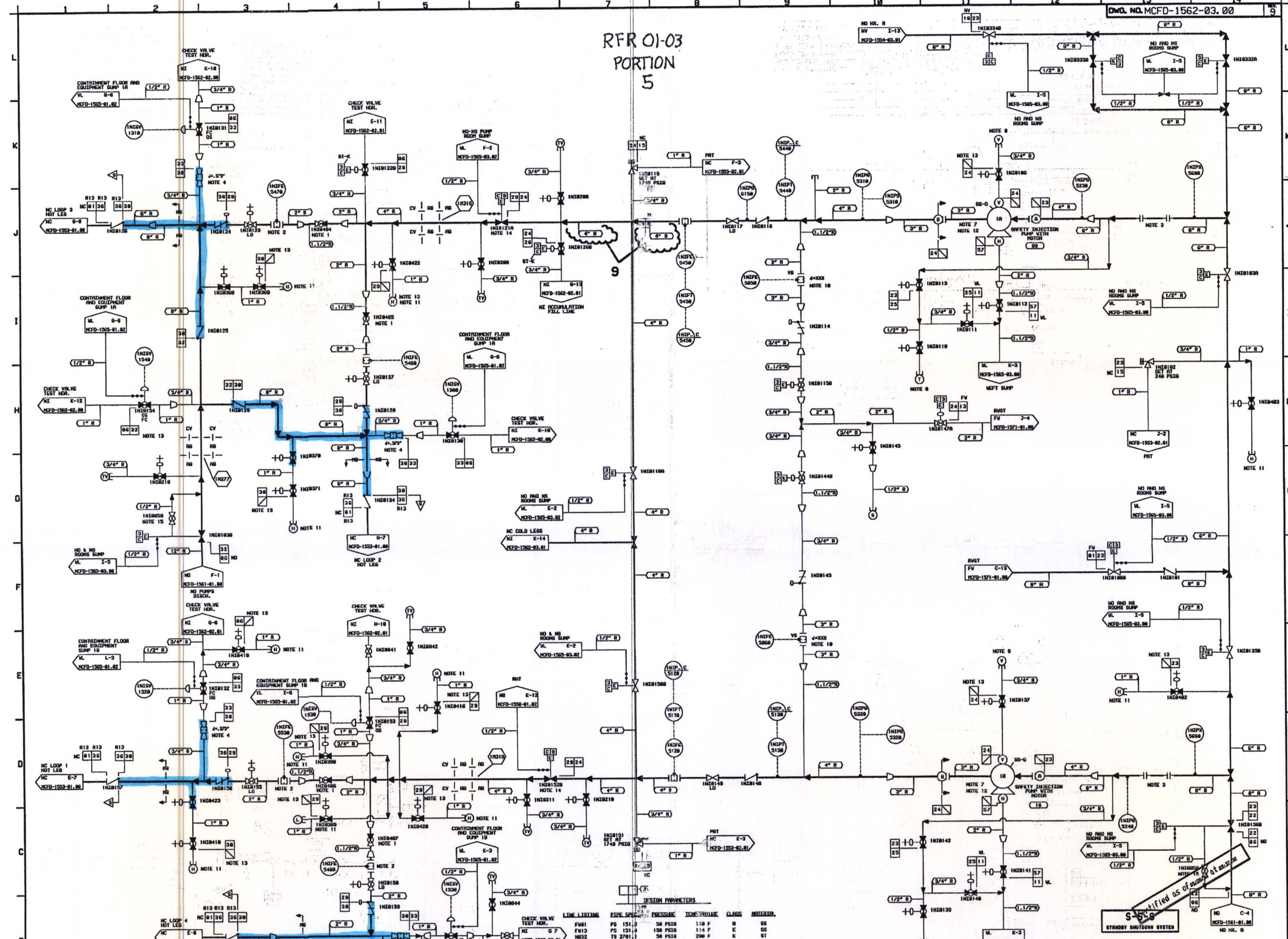


RFR 01-03
PORTION
5

DWG. NO. MCFD-1562-03.00

RFR01-03
Attachment
Page 7 of 12



- NOTES:
1. DRAIN VALVES IN FIELD TO LIMIT PUMP RUNOUT, THEN LOCK.
 2. FLOW METERING DEVICES TO VERIFY FLOW DURING PRECOMMISSIONING TESTING.
 3. TEMPORARY STRAINER IS PLACED IN SPOOL PIECE DURING INSTALL. PLUMBING OPERATIONS. STRAINER MUST BE REMOVED BEFORE PLANT START-UP. STRAINER AND SPOOL PIECE SUPPLIED BY OWNER.
 4. 3/8 INCH I.D. FLOW RESTRICTION INDICATED ON DWG. MCH-1281-82-2.
 5. USE FLOW STRAINERS MCFD-1573-81, 82 AND MCFD-1574-81, 82 FOR COOLING WATER CONNECTIONS TO SAFETY INJ. PUMPS.
 6. AIRWAVE TELL-TALE FOR EASY DRAINAGE INTO WINDUP DRAINAGE VESSEL.
 7. DRAIN VENT SO THAT DRIP IS 2 INCHES ABOVE BED PLATE AND DUMPS OVERFLOW INTO BED PLATE.
 8. MINIMUM GRAFICE SUPPLIED BY PUMP MANUFACTURER.
 9. VENTS AND DRAINAGE ROOFS BY CONSTRUCTION FOR FLUSH AND HYDRO.
 10. THIS COMPONENT WAS NOT BUILT TO ASME III. HOWEVER, IT WAS BUILT TO THE APPLICABLE CODE AT THE TIME OF PURCHASE AS PER INQUIRY FROM TABLE 1A-4-2.
 11. VENT AND DRAIN ASSEMBLIES ARE TO BE FABRICATED AND INSTALLED IN ACCORDANCE WITH MCH-1286-82-2882 USWB AND DIMENSIONED SPECIFICATION MCH-83-1A, 1B, 1C AND 1D.
 12. VALVE ROCKET EQUALIZATION LINE, ADMINISTRATIVELY LOCKED. OPEN, IF NECESSARY TO CLOSE, DO NOT OVERTIGHTEN.

DESIGN PARAMETERS

LINE	LINE NO.	SIZE	SP. WT.	PRESSURE	TEMP.	VOLUME	CLASS	INSULATION
FW1	PS 151.1	50	PS10	114	F	0	SS	
FW10	PS 151.4	100	PS10	114	F	0	SS	
FW11	TS 270.1	150	PS10	200	F	0	SS	
FW12	PS 270.1	2405	PS10	650	F	0	SS	
FW13	PS 151.2	100	PS10	230	F	0	SS	
FW14	PS 501.2	600	PS10	230	F	0	SS	
FW15	PS 520.1	2405	PS10	230	F	0	SS	
FW16	PS 520.1	2405	PS10	230	F	0	SS	
FW17	PS 520.1	2405	PS10	230	F	0	SS	
FW18	PS 520.1	2405	PS10	230	F	0	SS	
FW19	PS 520.1	2405	PS10	230	F	0	SS	
FW20	PS 520.1	2405	PS10	230	F	0	SS	
FW21	PS 151.1	2405	PS10	230	F	0	SS	
FW22	PS 151.1	2405	PS10	230	F	0	SS	
FW23	PS 151.1	2405	PS10	230	F	0	SS	
FW24	PS 151.1	2405	PS10	230	F	0	SS	
FW25	PS 151.1	2405	PS10	230	F	0	SS	
FW26	PS 151.1	2405	PS10	230	F	0	SS	
FW27	PS 151.1	2405	PS10	230	F	0	SS	
FW28	PS 151.1	2405	PS10	230	F	0	SS	
FW29	PS 151.1	2405	PS10	230	F	0	SS	
FW30	TS 270.1	150	PS10	200	F	0	SS	

REVISIONS

NO.	DATE	BY	CHKD	APP	DATE	REVISION
1	AS-BUILT PER MCH-12843	MCP	MS-20	JRC	01-28	REV. 01-28

QA CONDITION 1 AND 2

DUKE POWER COMPANY
MODULE NUCLEAR STATION UNIT 1
FLOW DIAGRAM OF
SAFETY INJECTION SYSTEM
(NI)

NOTE: DRAWING MCFD-1562-03.00 REPLACES MCH-1562-3.8 REV. 13

DATE: 01-28-83
DRAWN: J.M. WILLIAMS
CHECKED: J.M. WILLIAMS
DATE: 01-28-83
DATE: 01-28-83

DWG. NO. MCFD-1562-03.00

D-7