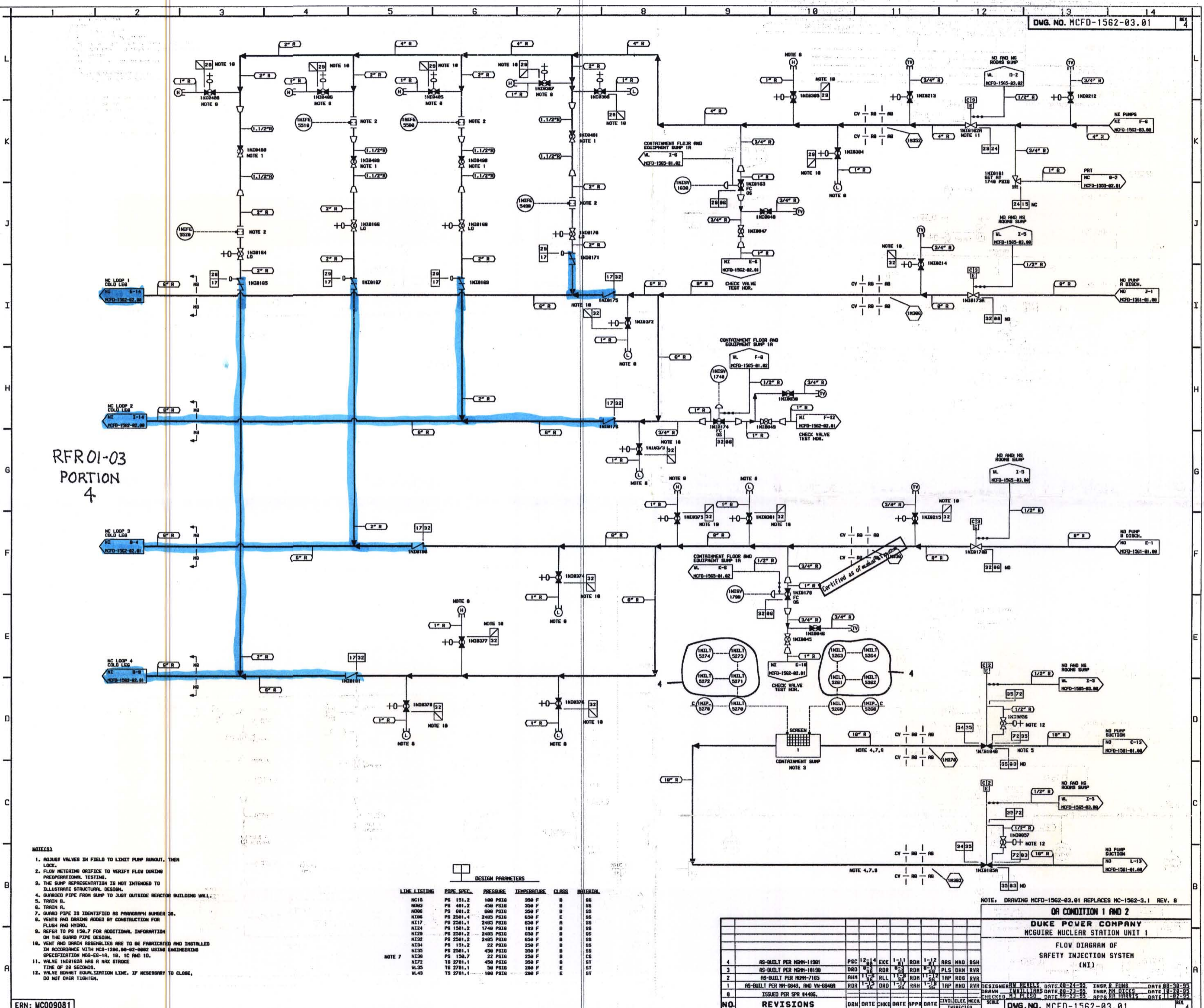


RFR01-03

Attachment

Page 6 of 12

RFR01-03  
PORTION  
4



- NOTES:
1. ADJUST VALVES IN FIELD TO LIMIT PUMP RUNOUT, THEN LOCK.
  2. FLOW METERING ORIFICE TO VERIFY FLOW DURING PROPORTIONAL TESTING.
  3. THE PUMP REPRESENTATION IS NOT INTENDED TO ILLUSTRATE STRUCTURAL DESIGN.
  4. GUARDED PIPE FROM PUMP TO JUST OUTSIDE REACTOR BUILDING WALL.
  5. TRIM IN.
  6. TRIM IN.
  7. GUARD PIPE IS IDENTIFIED BY PARAGRAPH NUMBER 3.
  8. VENTS AND DRAINS ADDED BY CONSTRUCTION FOR FLUSH AND HYDRO.
  9. REFER TO PS 156.7 FOR ADDITIONAL INFORMATION ON THE GUARD PIPE DESIGN.
  10. VENT AND DRAIN HOSEHOLES ARE TO BE FABRICATED AND INSTALLED IN ACCORDANCE WITH MCS-1200.00-02-0002 USING ENGINEERING SPECIFICATION NO-G-10, 10, 1C AND 10.
  11. VALVE INVERTER AND 0 IN-HOLD STRIKE TIME OF 20 SECONDS.
  12. VALVE BURNET EQUALIZATION LINE, IF NECESSARY TO CLOSE, DO NOT OVER TIGHTEN.

DESIGN PARAMETERS

LINE LISTING	PIPE SPEC.	PRESSURE	TEMPERATURE	CLASS	INSTRUM.
MC15	PS 151.2	100 PSIG	250 F	B	SS
MC03	PS 401.2	450 PSIG	250 F	B	SS
MC06	PS 601.2	600 PSIG	250 F	B	SS
MC08	PS 2501.4	2405 PSIG	650 F	E	SS
MC17	PS 2501.1	2405 PSIG	650 F	B	SS
MC24	PS 1501.2	1740 PSIG	180 F	B	SS
MC28	PS 2501.2	2405 PSIG	650 F	B	SS
MC32	PS 2501.2	2405 PSIG	650 F	B	SS
MC34	PS 151.2	22 PSIG	250 F	B	SS
MC35	PS 2501.1	450 PSIG	250 F	B	SS
MC38	PS 150.7	22 PSIG	250 F	B	CS
MC72	TS 2701.1	450 PSIG	250 F	B	ST
MC35	TS 2701.1	50 PSIG	200 F	E	ST
MC43	TS 2701.1	100 PSIG	200 F	E	ST

NOTE: DRAWING MCFD-1562-03.01 REPLACES MC-1562-03.1 REV. 0

OR CONDITION 1 AND 2  
DUKE POWER COMPANY  
MCUIRE NUCLEAR STATION UNIT 1  
FLOW DIAGRAM OF  
SAFETY INJECTION SYSTEM  
(N1)

NO.	REVISIONS	DATE	CHKD	DATE	APPD	DATE	SYMBOLS	MECH	INSPECTED	
4	AS-BUILT PER NCR-1091	PEC	12/4	EXK	1/11	RDH	1-17	ARG	NRD	BSH
3	AS-BUILT PER NCR-10190	GRD	8/28	RDH	8/28	RDH	8/28	PLS	DHM	SVR
2	AS-BUILT PER NCR-7105	RDH	1/1	RDH	1/1	RDH	1/1	RDH	RDH	SVR
1	AS-BUILT PER NCR-6840, AND V4-6840	RDH	1/27	DND	1/27	RDH	1/27	TAP	RDH	SVR

ISSUED PER SPN 84406.

DWG. NO. MCFD-1562-03.01

D-6