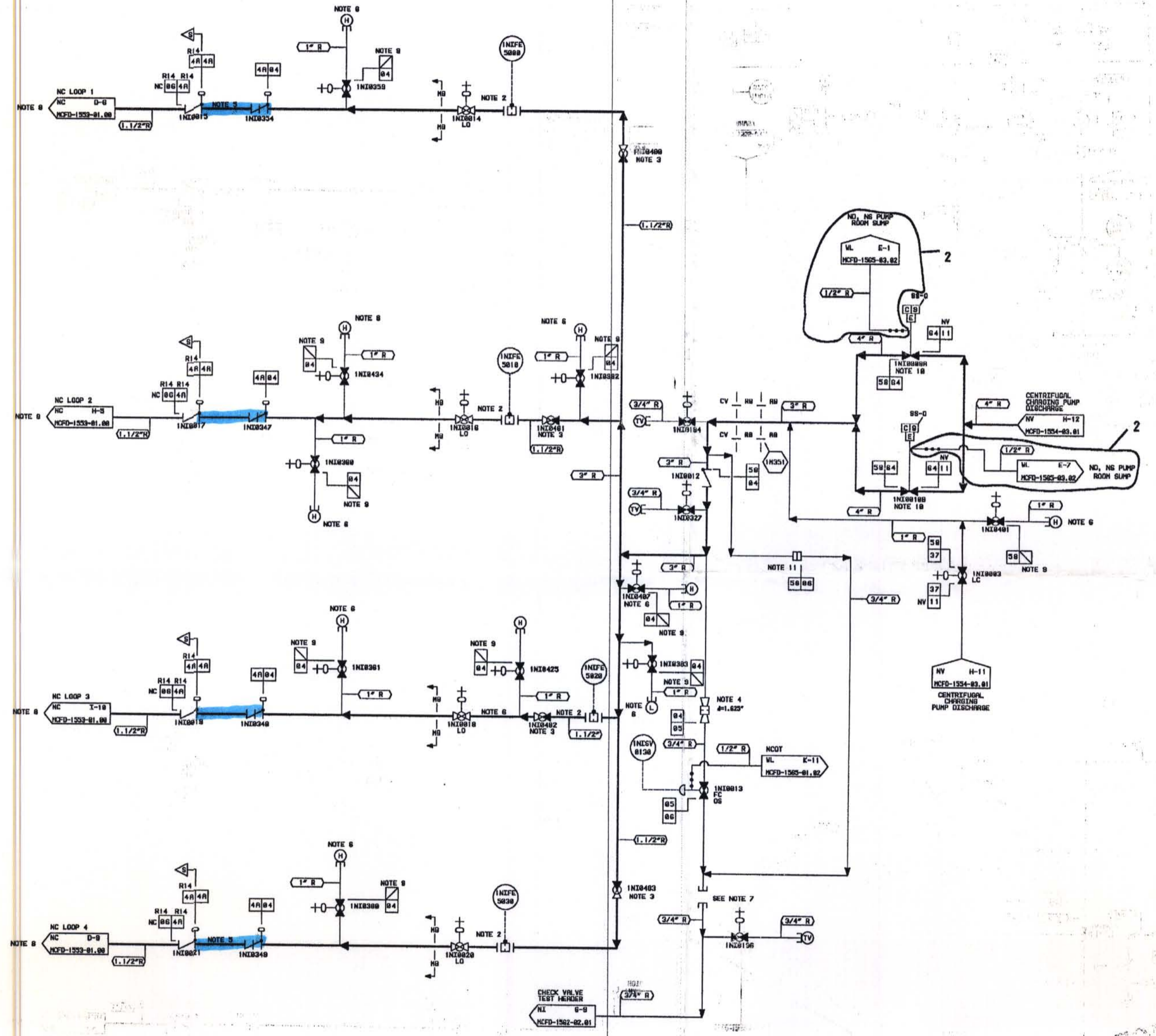


RFR01-03

Attachment

Page 3 of 12

RFR01-03 PORTION 3



- NOTES:
2. FLOW METERING BRIFICE TO MEASURE FLOW DURING PERIODIC TEST AND CALIBRATION.
 3. ADJUST VALVES IN FIELD TO LIMIT PUMP RUN OUT, THEN LOCK AND TICK-MARK IN POSITION.
 4. 3/8 INCH 20 FLOW RESTRICTION REQUIRED.
 5. IDENTIFY THE LENGTH OF THIS PIPE.
 6. VENTS AND DRENDS HOOKED BY CONSTRUCTION DEPT. FOR FLUSH AND HYDRO.
 7. A FULL BLANK COUPLING HAS BEEN INSTALLED TO PREVENT NC LEAKAGE INTO CHECK VALVE TEST HEADER.
 8. LOOP 4 CONNECTION IS AT MC COLD LEAD CENTRALINE. OTHER 3 LOOPS (1, 2, 3) CONNECTION IS AT TOP OF PIPING.
 9. VENT AND DRAIN HOSE/PIPELINE ARE TO BE PROVIDED AND INSTALLED IN ACCORDANCE WITH MCF-1562-01-00-0002 USING ENGINEERING SPECIFICATION MCF-ES-1A, 1B, 1C AND 1D.
 10. VALVES INK0388 AND INK0389 HAS A MAX STROKE TIME OF 11 SECONDS.
 11. BLANK FULL COUPLING.

DESIGN PARAMETERS

LINE LISTING	PIPE SPEC.	PSI/TEMP	TEMPERATURE	CLASS	MATERIAL
MC06	PS 2581.1	2485 PSIG	658 F	A	SS
MC04	PS 2581.2	2485 PSIG	658 F	B	SS
MC02	PS 2581.2	2485 PSIG	658 F	D	SS
MC08	PS 2581.4	2485 PSIG	658 F	E	SS
MC07	PS 2581.2	2735 PSIG	258 F	A	SS
MC09	PS 2581.1	2485 PSIG	658 F	A	SS
MC05	PS 2581.2	2485 PSIG	258 F	B	SS
MC04	PS 2581.2	2735 PSIG	160 F	D	SS
MC11	TS 2781.1	58 PSIG	160 F	C	ST
MC43	TS 2781.1	188 PSIG	268 F	E	ST

FOR INFORMATION ONLY

S-S-S
STANDBY SHUTDOWN SYSTEM

NOTE: DRAWING MCFD-1562-01.00 REPLACES MC-1562-1.0 REV. 18

QA CONDITION 1 AND 2

DUKE POWER COMPANY
MCQUIRE NUCLEAR STATION UNIT 1

FLOW DIAGRAM OF
SAFETY INJECTION
SYSTEM (N1)

NO.	REVISIONS	DRN	DATE	CHKD	DATE	APPD	DATE	DESIGNED BY	REVIEWS	DATE	CHKD BY	DATE	APPD BY	DATE
2	AS-BUILT PER NCH NO-1298/00	JRC	11/11/00	WJL	11/11/00	LSV	11/11/00	JRC						
1	AS-BUILT PER MCFD-1562-01.00	RDR	11/11/00	WJL	11/11/00	TRP	11/11/00	JRC						
0	ISSUED PER SPR #486													

DESIGNER: JRC DATE: 08-23-99
CHECKED: WJL DATE: 08-23-99
ISSUED: JRC DATE: 08-23-99

DATE: 08-23-99
DATE: 08-23-99
DATE: 08-23-99

DWG. NO. MCFD-1562-01.00

ERN: MCD09084

D-3