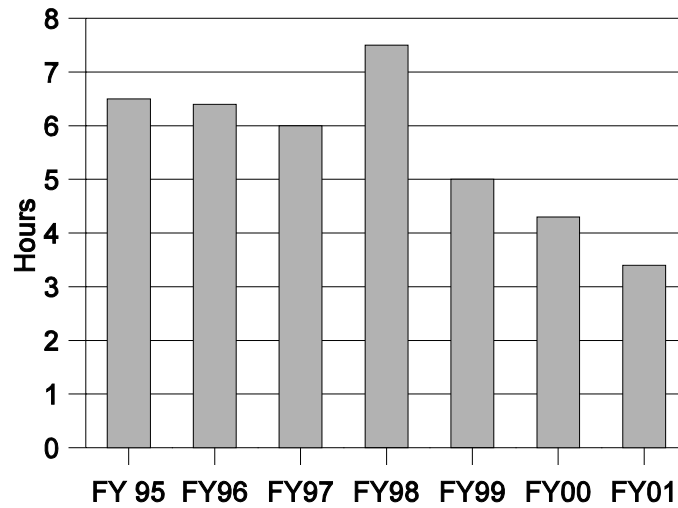


Medical Pilot Program Inspection and Enforcement Data

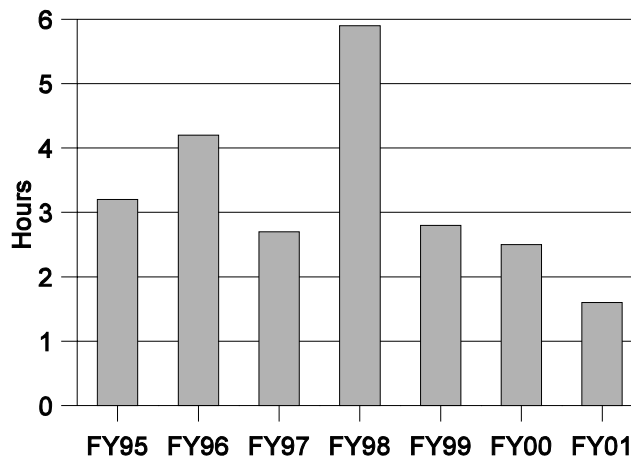
Inspection Data

Region	# Insp	# DIE	Average	STD	MODE
RI	88	313.4	3.6	2.1	3
RII	32	104.5	3.2	0.7	3
RIII	81	255.0	3.1	2.2	3
RIV	12	42.0	3.5	1.6	2
Totals	213	714.9	3.4	2.0	3.0

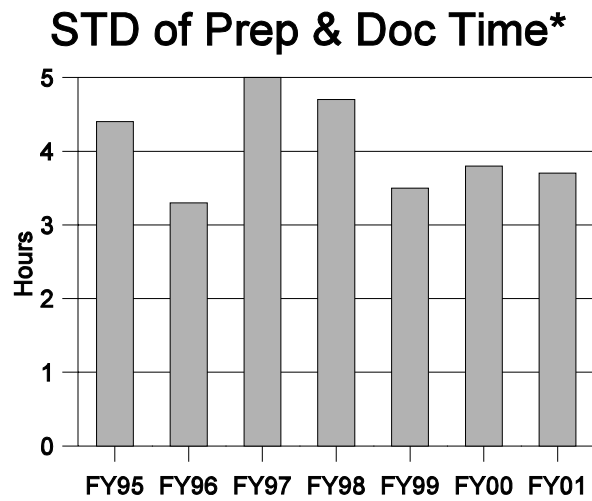
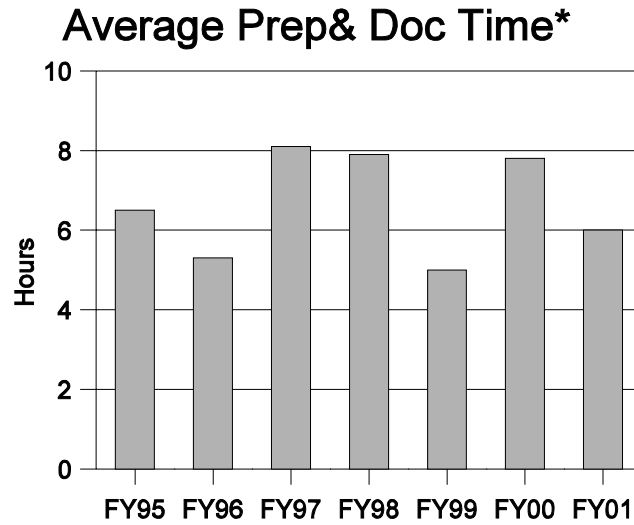
Average Direct Inspection Hours



Standard Deviation



Medical Pilot Program Inspection and Enforcement Data



*Preparation and Documentation of Inspection Activities

Medical Pilot Program Inspection and Enforcement Data

Enforcement History

Escalated Enforcement

	FY96	FY97	FY98	FY99	FY00	FY01
SL II/III	8	15	3	3	9*	3
Willfull	5	1	1	0	4	0
Loss of Control	1	10	1	1	1	3

* 2 SL III in FY00 under pilot

Pilot Severity Level IVs VS Focus Elements

Focus Element	Surveillance and Corrective Action	Knowledgeable Staff and Management	Doses Within Limits	Security and Control of RAM	Conformance to Written Directives	Use as Authorized
Violations	5	4	6	6	1	11

NMED Data for Pilot Program

	FY96	FY97	FY98	FY99	FY00	FY01
Medical Event	19	19	12	10	15	9
Lost or Stolen Source	10	11	8	5	7	6
Release of Material	1	3	4	0	0	1
Over Exposure	1	0	0	0	0	3*

*The three events were due to x-rays and not licensed material