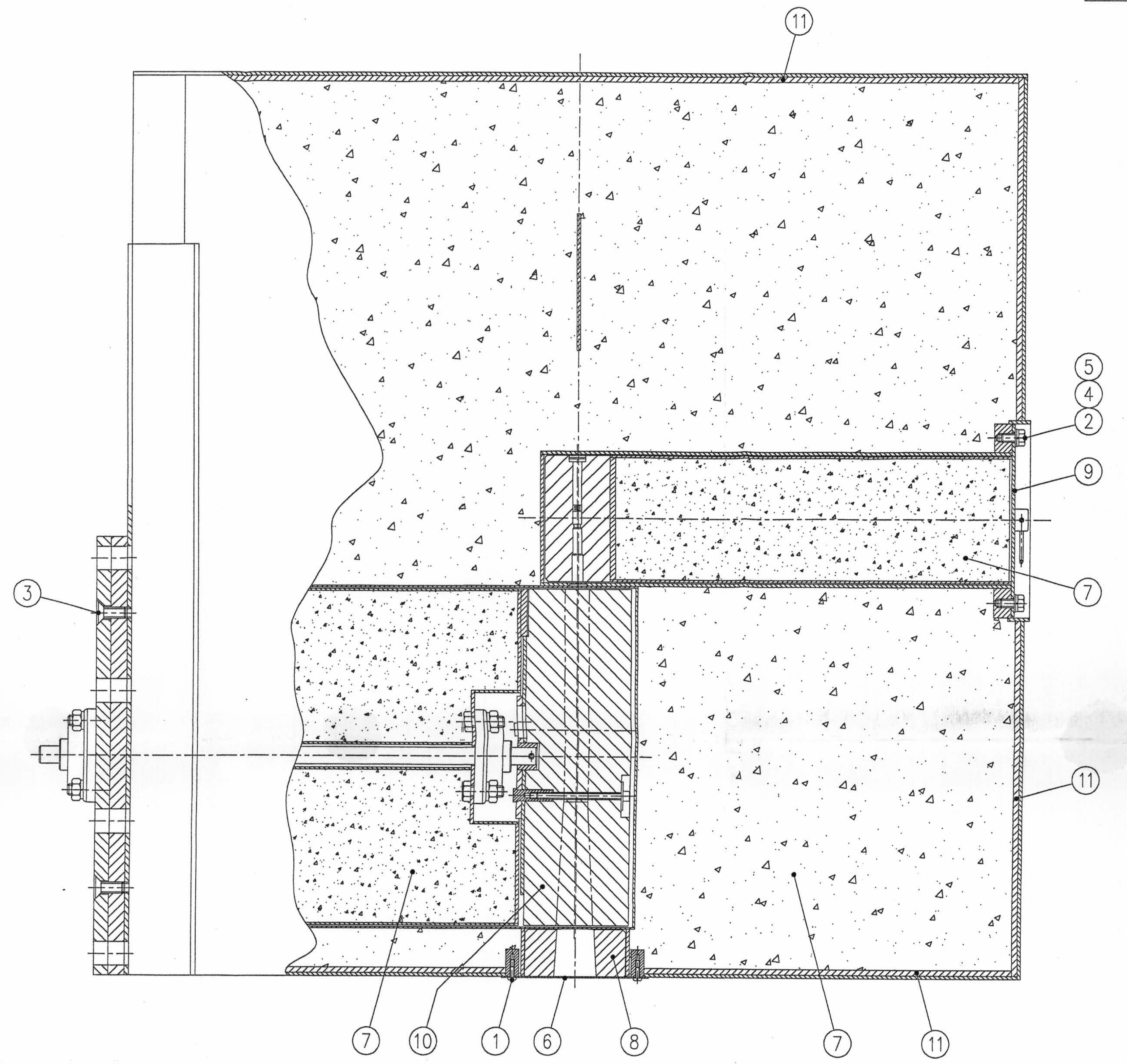


12



ITEM LIST				
ITEM	PART NUMBER	QTY.	U/M	DESCRIPTION
1	0205-00-0028	4	EA	SCREW, PAN HD SLOTTED, Z/P, M4 x 10
2	0222-00-0231	6	EA	BOLT, HEX HD, S/S, M8 x 20
3	0231-00-0113	4	EA	SCREW, SOCKET FLAT HD, Z/P, M10 x 25
4	0252-00-0153	6	EA	WASHER, SPRING, S/S, 8mm
5	0252-00-0160	6	EA	WASHER, FLAT, S/S, 8mm
6	5010-00-0136	1	EA	PLATE, COLLIMATOR RETAINER
7	5805-00-0197	1	EA	CAST NEUTRON SHIELDING, CM100
8	5835-00-0003	1	EA	COLLIMATOR, SOURCE ENCLOSURE
9	6205-90-0006	1	EA	HOLDER ASSEMBLY, SOURCE & TUBE
10	6625-90-0001	1	EA	ROTARY SHUTTER ASSEMBLY
11	7340-00-0015	1	SHT	INSULATION, 5mm NEFALIT
12	8020-00-0035	1	EA	HOUSING, SOURCE

D-8

<b>SOURCE ENCLOSURE ASSEMBLY</b>		<b>MCI</b> MINERAL CONTROL INSTRUMENTATION PTY LIMITED PO BOX 84 UNLEY SOUTH AUSTRALIA 5061	
USED ON	CM100	DRAWING No.	REV No.
DRAWN	D.O.	DATE	8025-90-0026 0
CHECKED		SCALE:	1:2.5 SHEET 1 OF 1 DRG SIZE A1
CHANGE	REV No.	DATE	CHANGE NOTICE No.
GENERAL TOLERANCE		±0.5 LINEAR ±0.5 ANGULAR ±0.25 HOLE CRS.	
DIMENSIONS IN MILLIMETRES UNLESS OTHERWISE STATED			