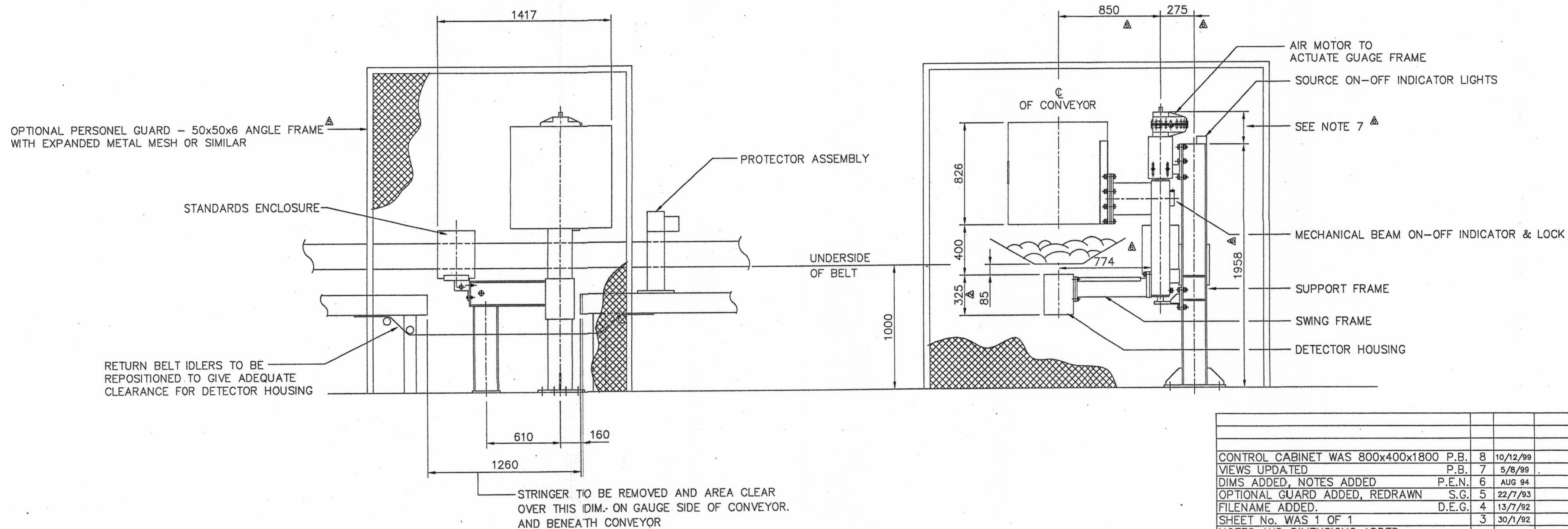
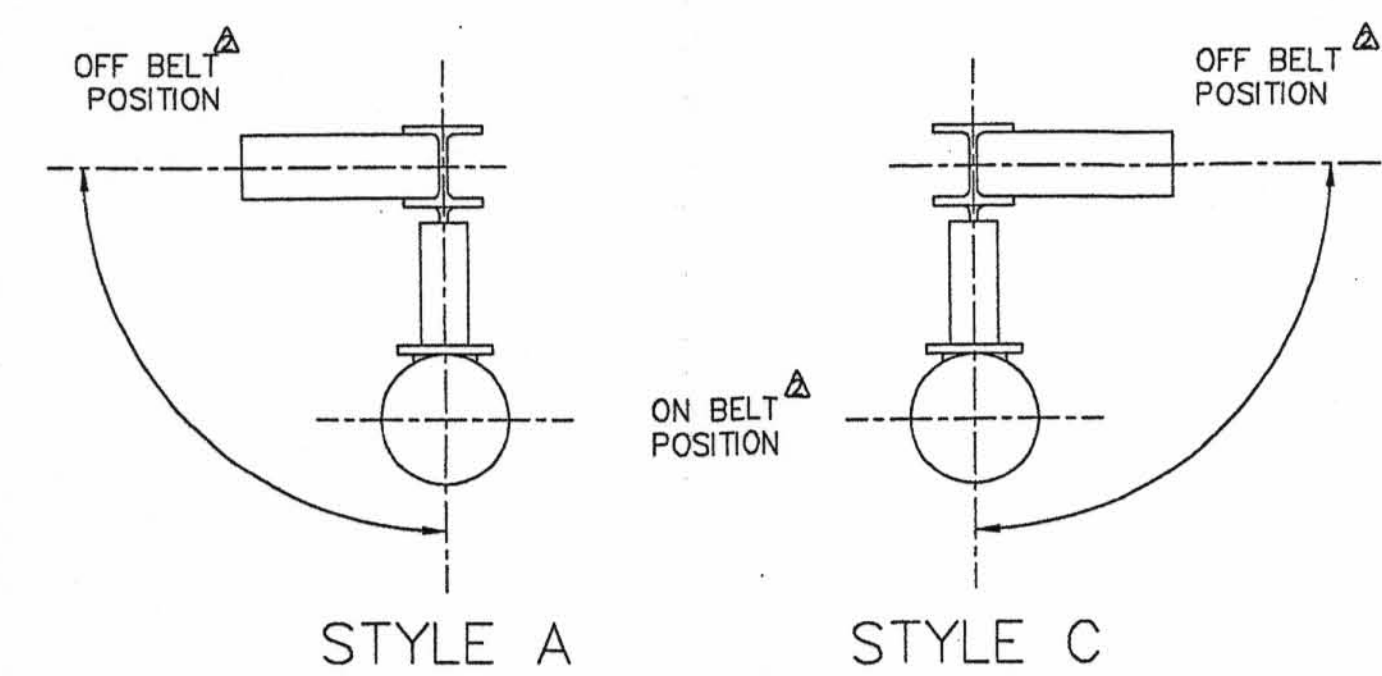


- NOTE : CLIENT TO SUPPLY THE FOLLOWING DATA TO ENABLE DESIGN OF SUPPORT FRAME AND PROTECTOR
1. DISTANCE OVER OUTSIDE OF STRINGERS
 2. BELT WIDTH AND ANGLE
 3. A GENERAL ARRANGEMENT FOR THE CONVEYOR SYSTEM BE SUPPLIED TO SCANTECH INCORPORATING THE ABOVE DIMENSIONS
 4. WHICH SIDE OF CONVEYOR UNIT IS TO BE INSTALLED AS DETAILED OR OPPOSITE SIDE?
 5. STYLE REQUIRED
 6. CONTROL CABINET TO BE 1000mm TO 5000mm FROM MACHINE.
 7. THIS DIMENSION VARIES DEPENDING ON THE MODEL ACTUATOR AND THE ADJUSTMENT OF THE GAUGE FRAME. THE MAXIMUM DIMENSIONS ARE : -MODEL 14 ACTUATOR 350
:-MODEL 16 ACTUATOR 475
 8. FOR FURTHER ESSENTIAL INFORMATION ON THE CORRECT INSTALLATION OF THIS ANALYSER PLEASE REFER TO THE SPECIFICATION, INSTALLATION AND OPERATION MANUALS.



				Scantech		PO BOX 64 UNLEY SOUTH AUSTRALIA 5061
				D-4		
				INSTALLATION - CM100		
CONTROL CABINET WAS 800x400x1800	P.B.	8	10/12/99	USED ON	CM100	DRAWING No.
VIEWS UPDATED	P.B.	7	5/8/99	DRAWN	J.M.D.	23/2/90
DIMS ADDED, NOTES ADDED	P.E.N.	6	AUG 94	CHECKED		9560-00-0010
OPTIONAL GUARD ADDED, REDRAWN	S.G.	5	22/7/93	SCALE:	1:20	SHEET: 1 OF 2
FILENAME ADDED	D.E.G.	4	13/7/92	GENERAL		A1
SHEET No. WAS 1 OF 1		3	30/1/92	±1° LINEAR		
NOTES AND DIMENSIONS ADDED		2	28/4/91	±1° ANGULAR		
85 WAS 35, 800 WAS 600				±0.5 HOLE CRS.		
CHANGE	REV No.	DATE	CHANGE NOTICE No.	TOLERANCE	DIMENSIONS IN MILLIMETRES UNLESS OTHERWISE STATED	