

R 78 W

R 77 W

R 76 W

T 46 N

T 46 N

T 45 N

T 45 N

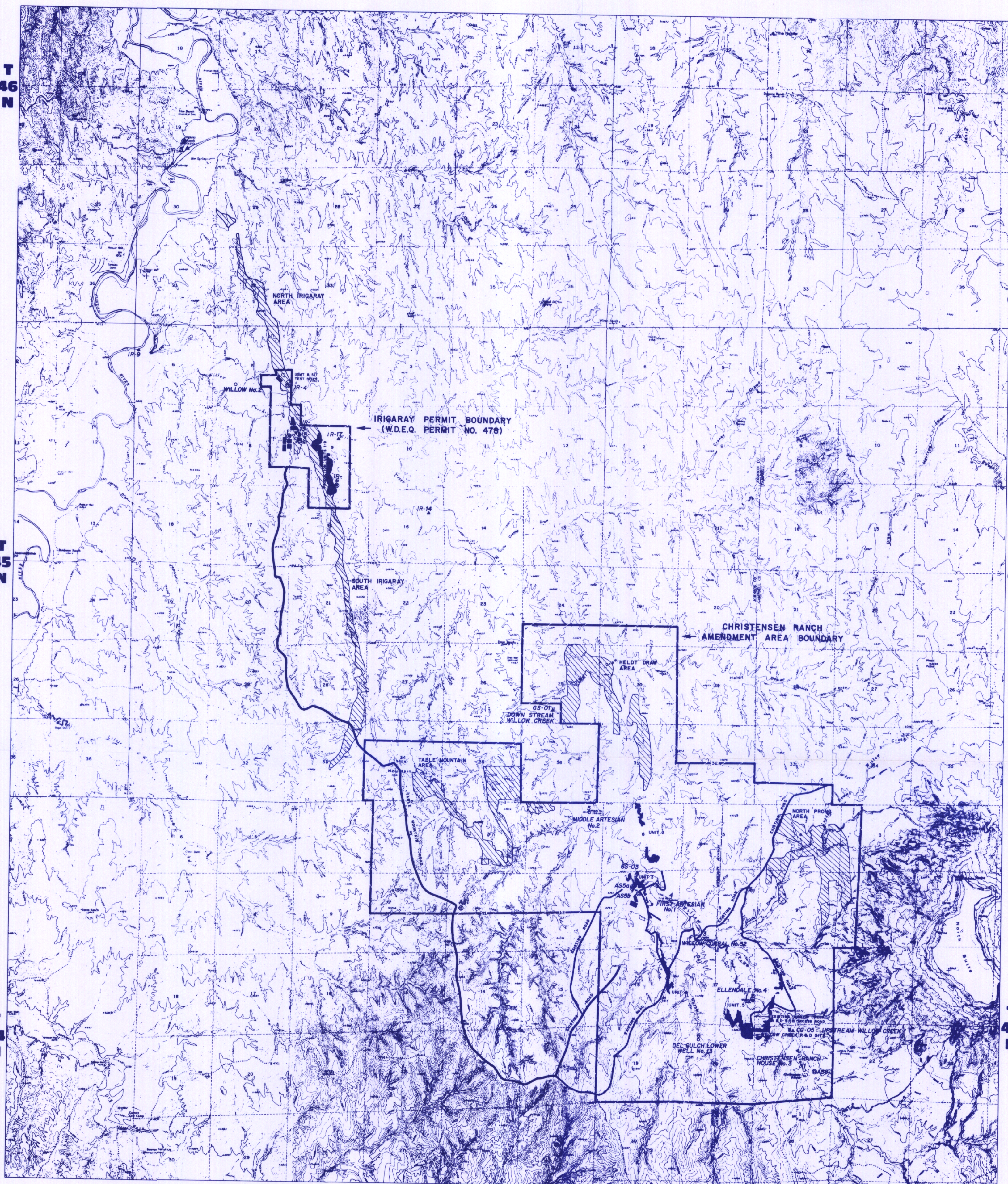
T 44 N

T 44 N

R 78 W

R 77 W

R 76 W



LEGEND

- WELL FIELD ACCESS ROADS
- HAUL ROAD - EXISTING ROAD
- WELLFIELD AREA
- DRAINAGE CULVERT LOCATION AND NUMBER
- TOPSOIL STOCKPILE LOCATION (SIZE APPROXIMATE)
- EVAPORATION PONDS
- ▨ FUTURE AREA OF DEVELOPMENT
- AIR SAMPLE LOCATION (RADON AND PARTICULATE)
- ⊙ AIR SAMPLE LOCATION (RADON AND PARTICULATE)
- ⊙ VEGETATION SAMPLE LOCATION
- ⊙ SOIL SAMPLE LOCATION
- ⊙ DIRECT RADIATION MONITOR LOCATION
- ⊙ AIR SAMPLE LOCATION (RADON)
- ⊙ VEGETATION SAMPLE LOCATION (RADON)
- ⊙ SOIL SAMPLE LOCATION
- ⊙ DIRECT RADIATION MONITOR LOCATION
- STOCK & DOMESTIC WELL SAMPLE LOCATION
- REGIONAL GROUNDWATER MONITORING
- ▲ UPSTREAM & DOWNSTREAM SURFACE WATER SAMPLE LOCATION

D-3



COGEMA Mining, Inc.
 P.O. Box 728 Mills, Wyoming 82644
 IRIGARAY & CHRISTENSEN RANCH
 JOHNSON & CAMPBELL COUNTIES, WYOMING

**Irigaray and Christensen Ranch
 Environmental Monitoring
 Station Locations**

DATE: 01.11.2005
 DRAWN: JEFFREY
 CHECKED: JEFFREY
 SCALE: AS SHOWN
 SHEET NO. 5.5