

R 76 W

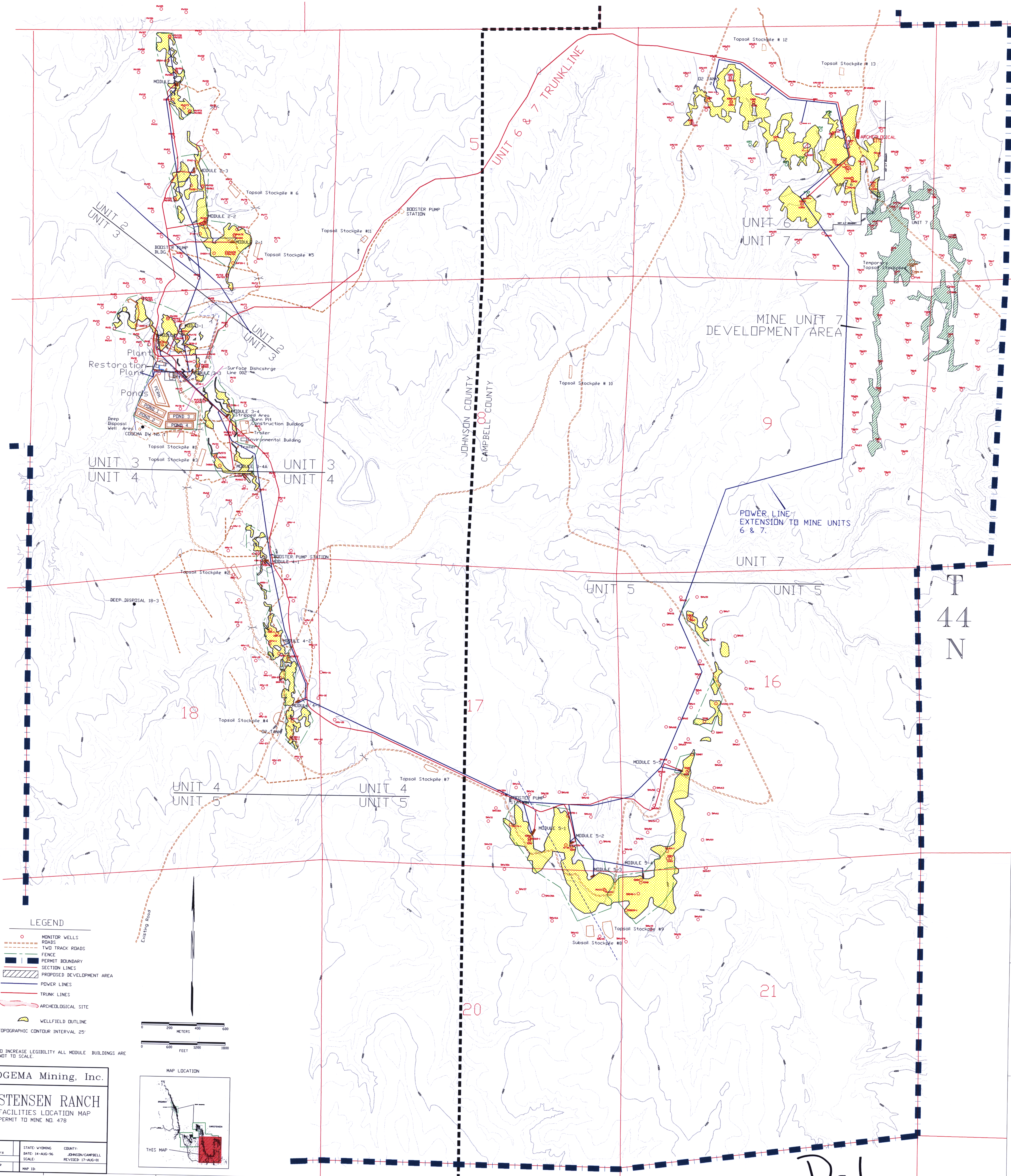
1152000
1150000
1148000
1146000
1144000
1142000
1140000
1138000
1136000
1134000

1152000
1150000
1148000
1146000
1144000
1142000
1140000
1138000
1136000
1134000

JOHNSON COUNTY
CAMPBELL COUNTY

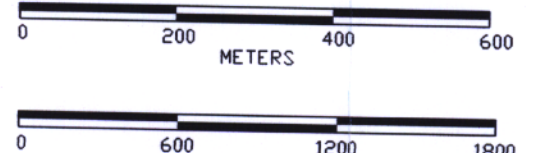
T
44
N

D-1



LEGEND

- MONITOR WELLS
- ROADS
- TWO TRACK ROADS
- FENCE
- PERMIT BOUNDARY
- SECTION LINES
- PROPOSED DEVELOPMENT AREA
- POWER LINES
- TRUNK LINES
- ARCHEOLOGICAL SITE
- WELLFIELD OUTLINE
- TOPOGRAPHIC CONTOUR INTERVAL 25'

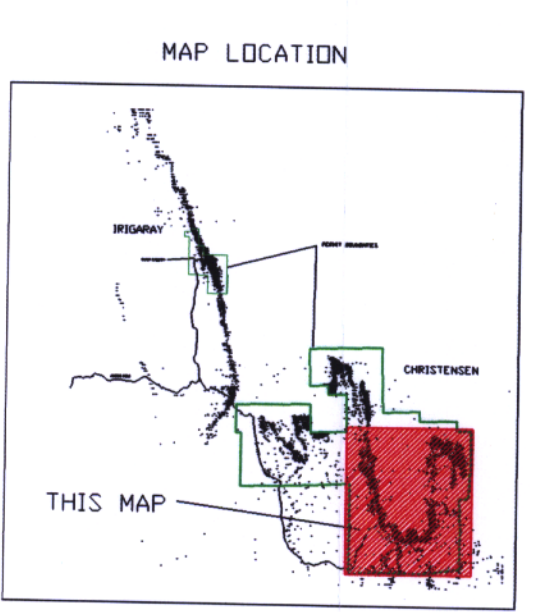


NOTE: TO INCREASE LEGIBILITY ALL MODULE BUILDINGS ARE NOT TO SCALE.

COGEMA Mining, Inc.

CHRISTENSEN RANCH
AREA FACILITIES LOCATION MAP
PERMIT TO MINE NO. 478

GEOLGYN: ENVIRON. B. Vickers	STATE: WYOMING	COUNTY: JOHNSON/CAMPBELL
SURVEY: DATA PROC. P. Heggie	DATE: 14-AUG-96	REVISION: 17-AUG-01
MAP ID:		



840000 842000 844000 846000 848000 850000 852000 854000 856000