

ENTRANCE

EQUIPMENT NEEDS*

LOBBY

5 DISPLAY TABLES

1 REGISTRATION TABLE W/2 CHAIRS + ELECTRICAL HOOKUP

AUDITORIUM

1 TABLE FOR PANEL W/3 CHAIRS + 2 MICROPHONES**

1 TABLE FOR TRANSCRIBER W/CHAIR + HOOKUP TO SOUND SYSTEM

1 SCREEN

1 PODIUM W/MICROPHONE**

2 MICROPHONES W/STANDS

SOUND SYSTEM

- SOUND SYSTEM TO BE PROVIDED BY BLAIR HS.

- SOUND SYSTEM MUST ALLOW CONNECTION FOR TRANSCRIBER.

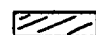
- NRC WILL PROVIDE PORTABLE MICROPHONE W/RECEIVER/AMPLIFIER FOR CONNECTION TO SOUND SYSTEM.

VIDEO SYSTEM

- COMPUTER-COMPATIBLE PROJECTOR TO BE SUPPLIED BY BLAIR HS.

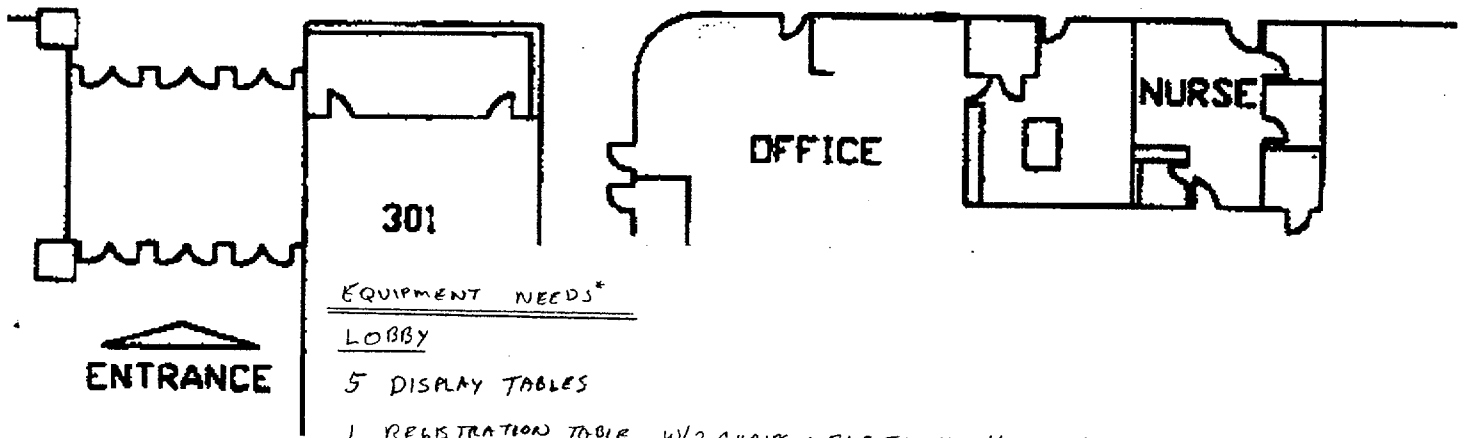
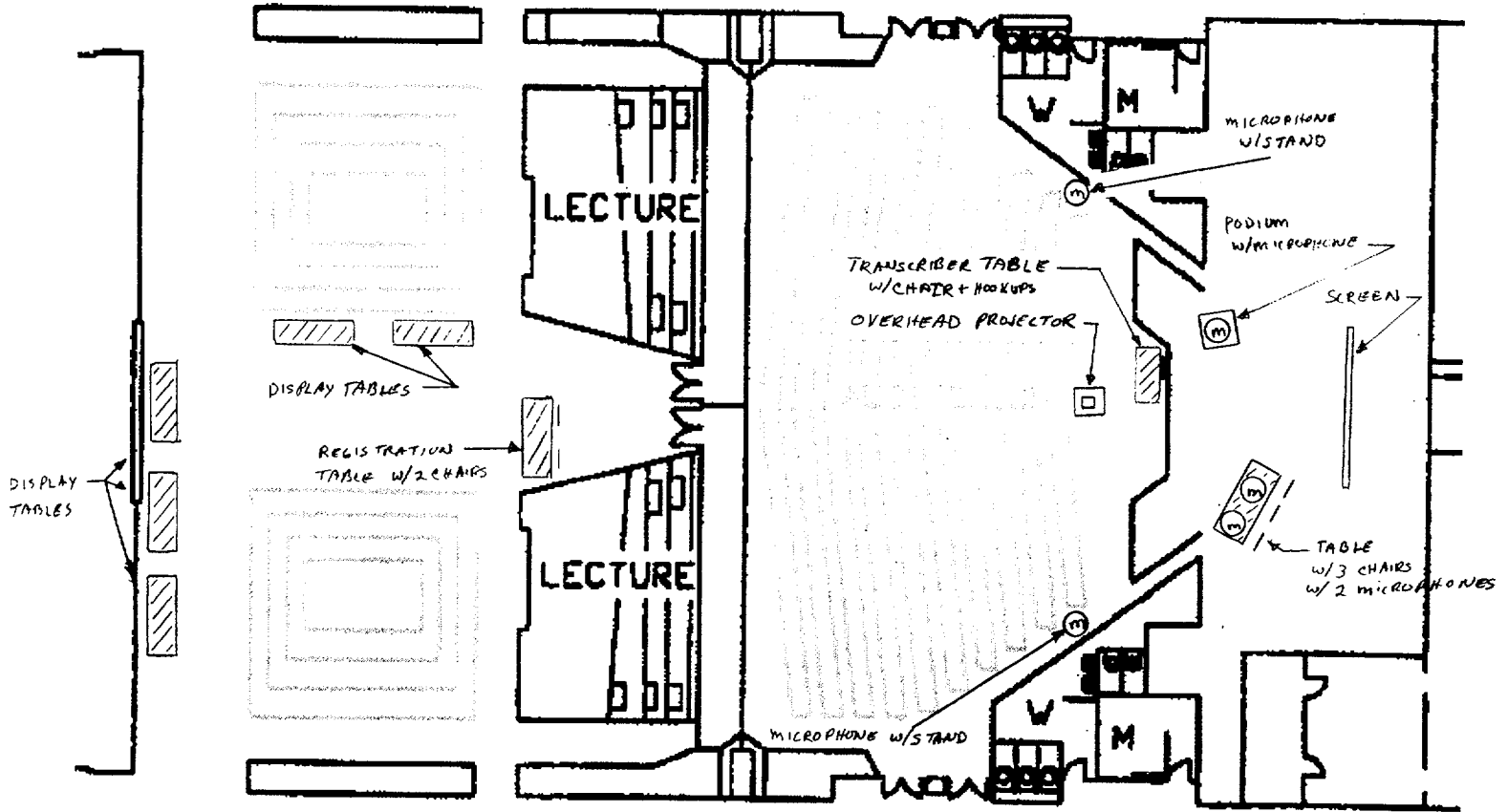
- NRC WILL PROVIDE LAPTOP WITH 15 PIN CONVERTER FOR DISPLAY.

LEGEND

 - TABLE

 - MICROPHONE

* LOCATIONS ARE APPROXIMATE AND CAN BE ADJUSTED TO ACCOMMODATE EQUIPMENT.



EQUIPMENT NEEDS*

LOBBY

5 DISPLAY TABLES

1 REGISTRATION TABLE W/2 CHAIRS + ELECTRICAL HOOKUP

AUDITORIUM

1 TABLE FOR PANEL W/3 CHAIRS + 2 MICROPHONES**

1 TABLE FOR TRANSCRIBER W/CHAIR + HOOKUP TO SOUND SYSTEM

1 SCREEN

1 PODIUM W/MICROPHONE**

2 MICROPHONES W/STANDS

SOUND SYSTEM

- SOUND SYSTEM TO BE PROVIDED BY BLAIR HS.

- SOUND SYSTEM MUST ALLOW CONNECTION FOR TRANSCRIBER.

- NRC WILL PROVIDE PORTABLE MICROPHONE W/RECEIVER/AMPLIFIER FOR CONNECTION TO SOUND SYSTEM.

VIDEO SYSTEM

- COMPUTER COMPATIBLE PROJECTOR TO BE SUPPLIED BY BLAIR HS.

- NRC WILL PROVIDE LAPTOP WITH 15 PIN CONNECTOR FOR DISPLAY.

LEGEND

▨ - TABLE

Ⓜ - MICROPHONE

* LOCATIONS ARE APPROXIMATE AND CAN BE ADJUSTED TO ACCOMMODATE EQUIPMENT.