

Private Fuel Storage, L.L.C.

7677 East Berry Ave., Englewood, CO 80111-2137

Phone 303-741-7009 Fax: 303-741-7806

John L. Donnell, P.E., Project Director

Mr. Mark Delligatti
Spent Fuel Project Office
Office of Nuclear Material Safety & Safeguards
U.S. Nuclear Regulatory Commission
Rockville, MD 20852

February 5, 2002

CLARIFICATION – LOW RAIL CORRIDOR ALIGNMENT
DOCKET NO. 72-22 / TAC NO. L22462
PRIVATE FUEL STORAGE FACILITY
PRIVATE FUEL STORAGE L.L.C.

Reference: PFS Letter, Donnell to Delligatti, "Clarification – Low Rail Corridor Alignment", dated December 4, 2001

As requested by you this date, enclosed are 3 additional full size copies (11" x 17") of Figures 1-1 through 1-18. These Figures were previously transmitted as attachments to the above referenced letter.

If you have any questions regarding this submittal, please contact me at 303-741-7009.

Sincerely,

John L. Donnell
Project Director
Private Fuel Storage L.L.C.

Enclosures

N175501 Public

copy to, without enclosure:

Asadul Chowdhury

John Parkyn

Jay Silberg

Sherwin Turk

Greg Zimmerman

Scott Northard

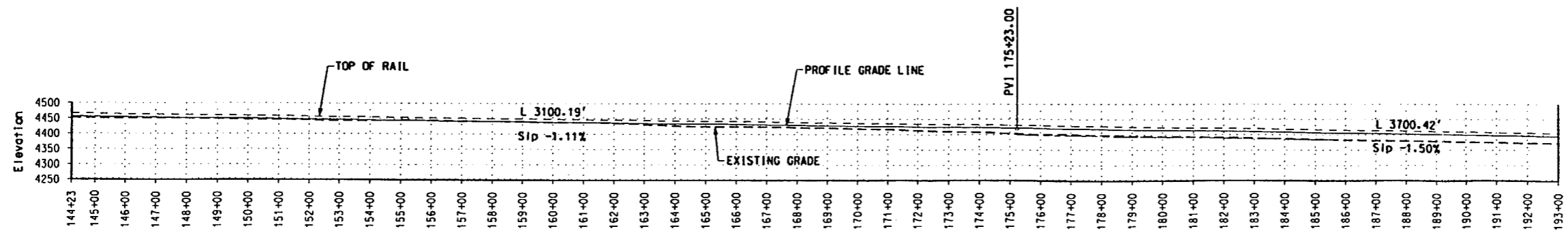
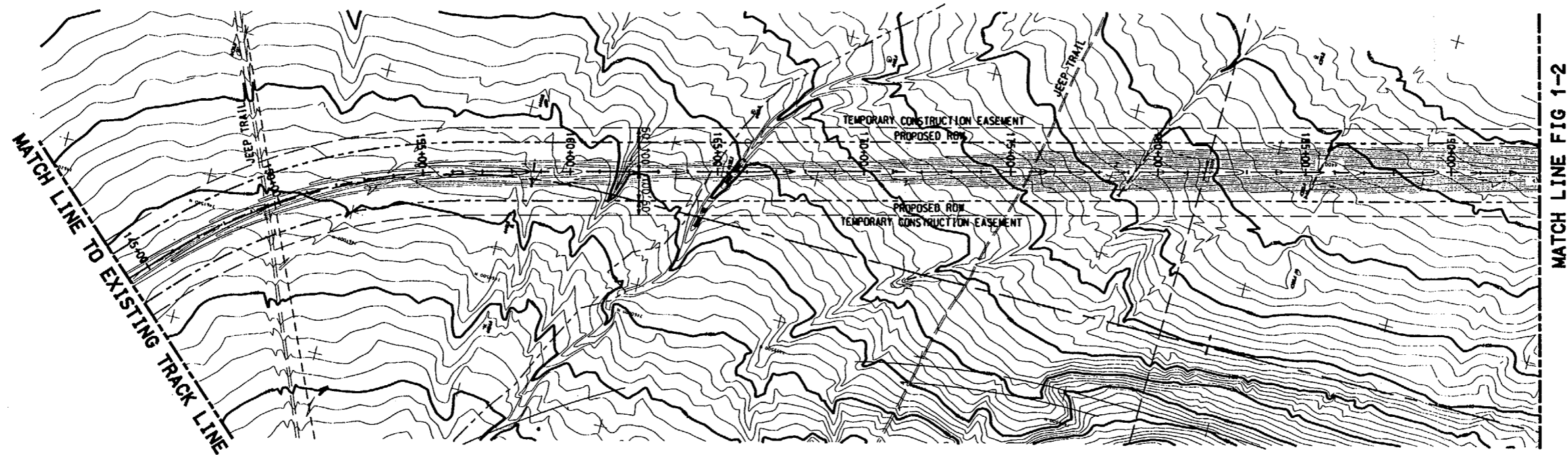
John Paul Kennedy

Joro Walker

U.S. NRC Document Control Desk

Paul EchoHawk

Chet Poslusny



PROFILE
SCALE: 1" = 200' (HOR)
1" = 20' (VERT)

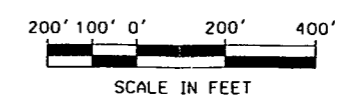
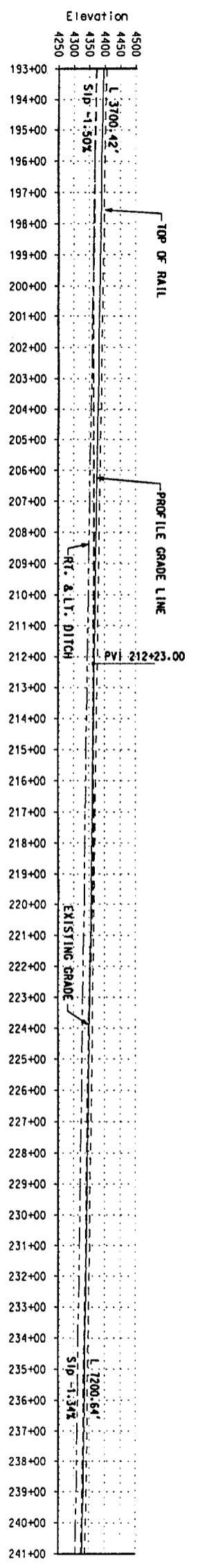
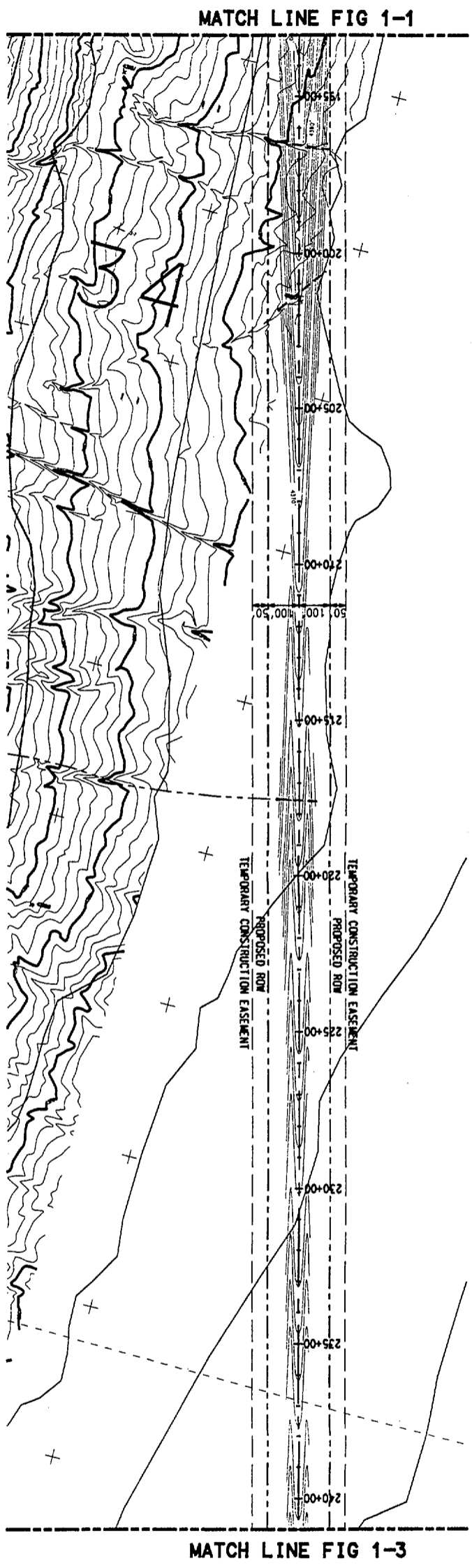


FIGURE 1-1
PFSF RAILROAD
ALTERNATE ROUTE PLAN AND PROFILE
STA 144+23 - STA 193+00



PROFILE
 SCALE: 1" = 200' (HORIZ)
 1" = 20' (VERT)

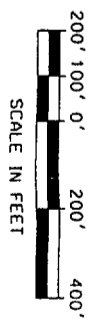
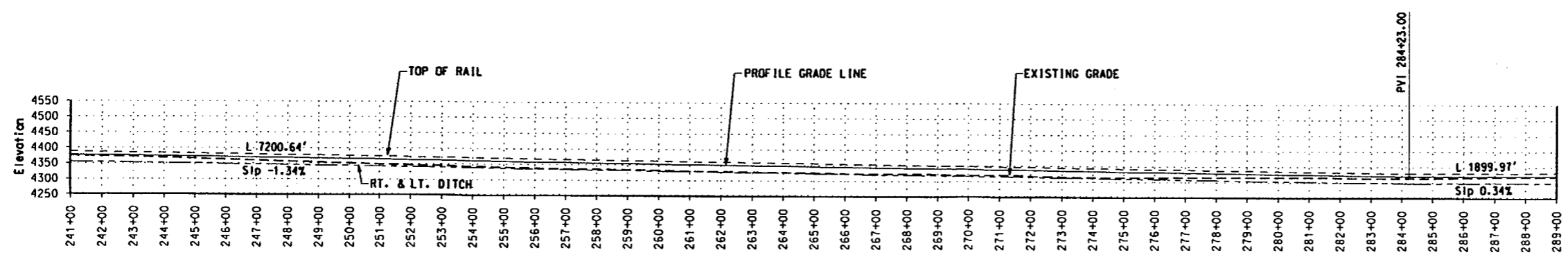
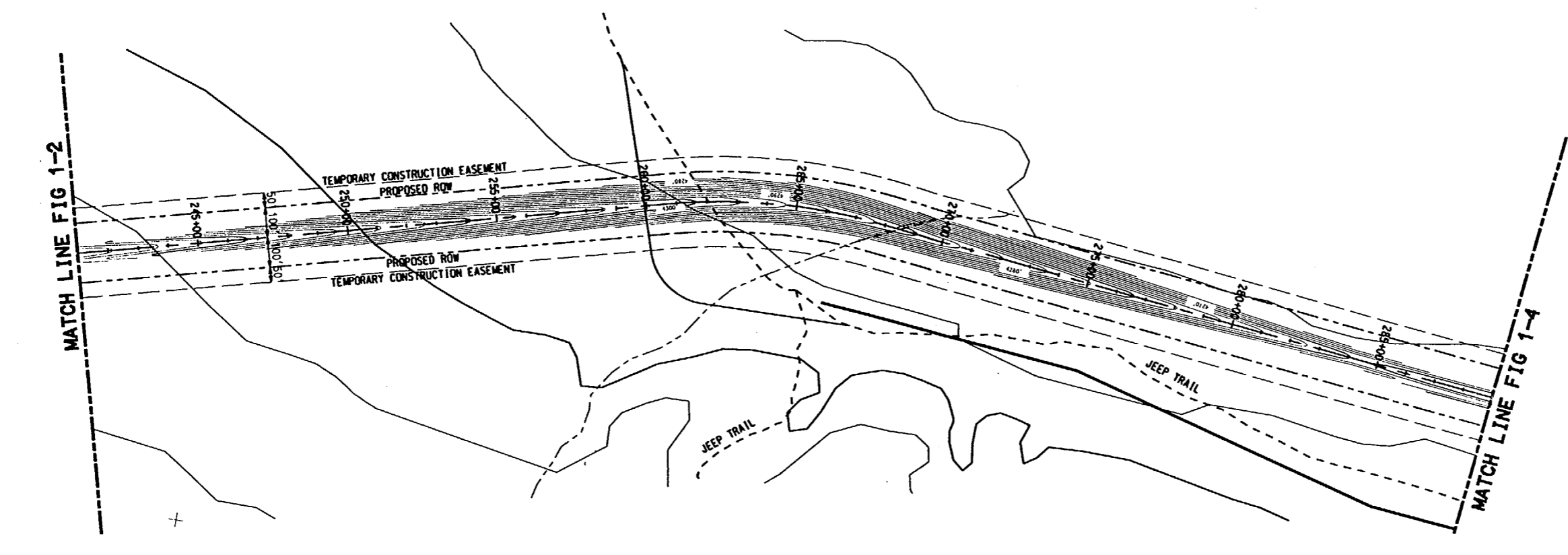


FIGURE 1-2
 PFSF RAILROAD
 ALTERNATE ROUTE PLAN AND PROFILE
 STA 193+00 - STA 241+00



PROFILE
SCALE: 1" = 200' (HOR)
1" = 20' (VERT)

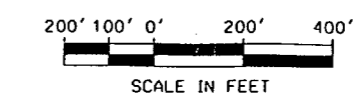
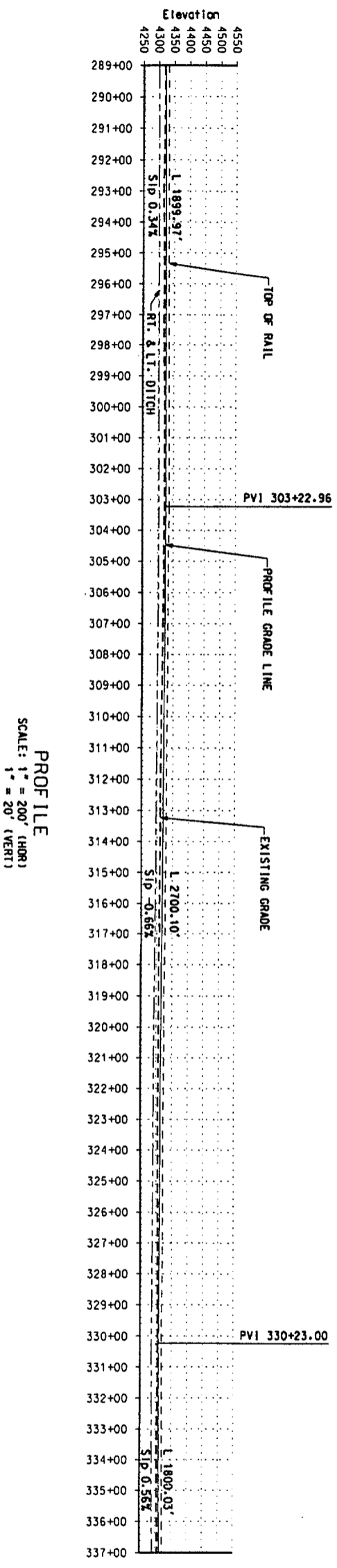
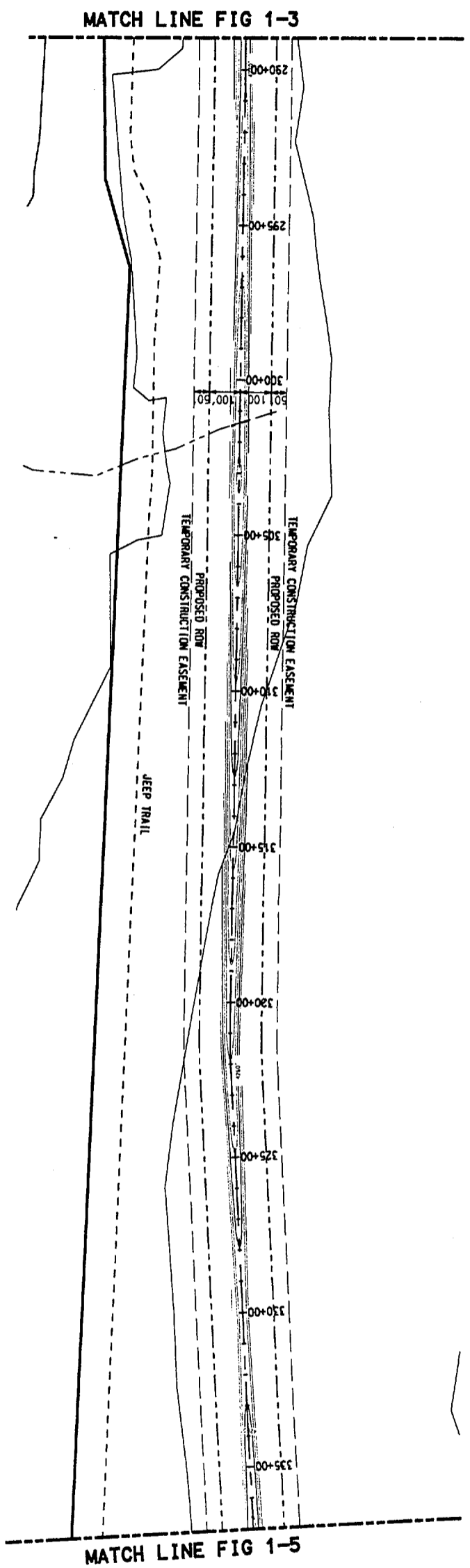


FIGURE 1-3
PFSF RAILROAD
ALTERNATE ROUTE PLAN AND PROFILE
STA 241+00 - STA 289+00



PROFILE
 SCALE: 1" = 200' (HORIZ)
 1" = 20' (VERT)

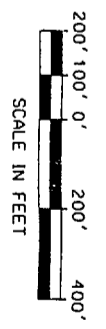
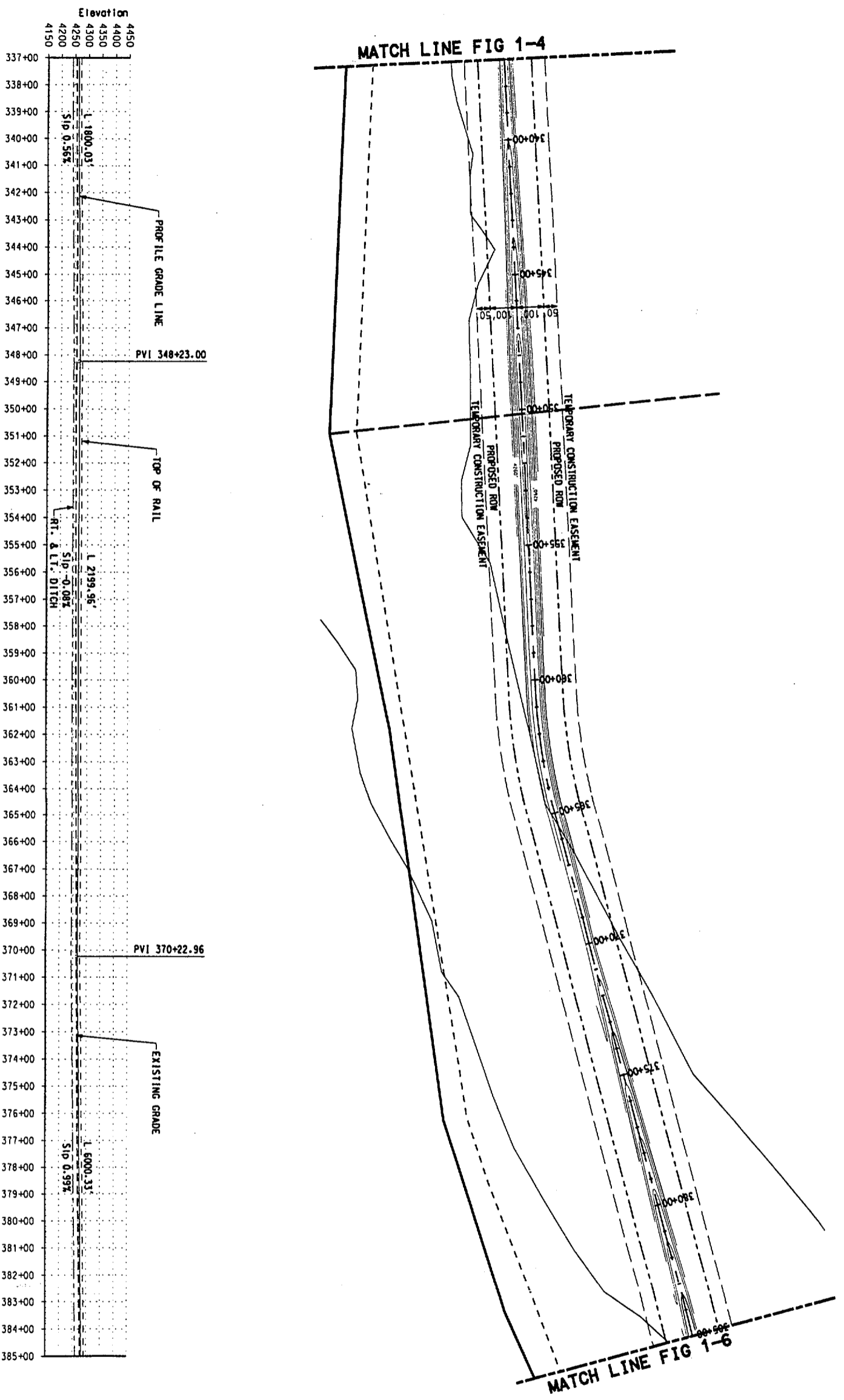


FIGURE 1-4
 PFSF RAILROAD
 ALTERNATE ROUTE PLAN AND PROFILE
 STA 289+00 - STA 337+00



PROFILE
 SCALE: 1" = 200' (HORI)
 1" = 20' (VERT)

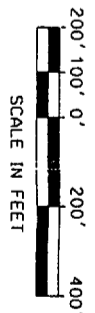
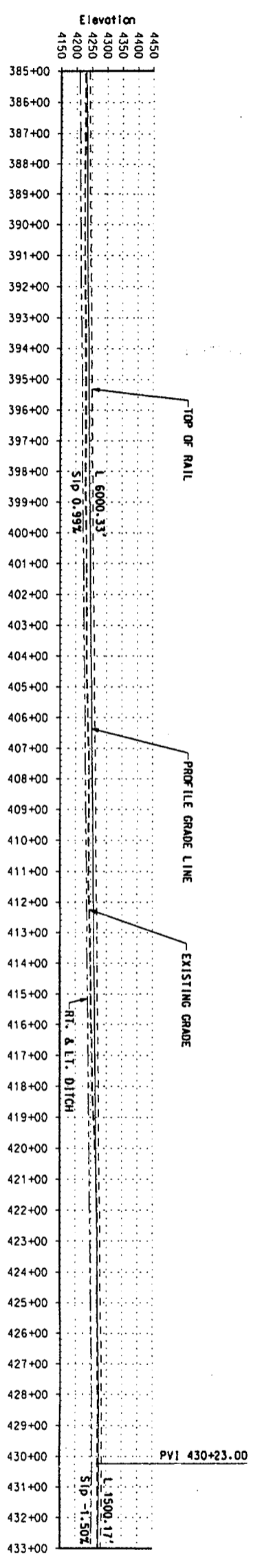
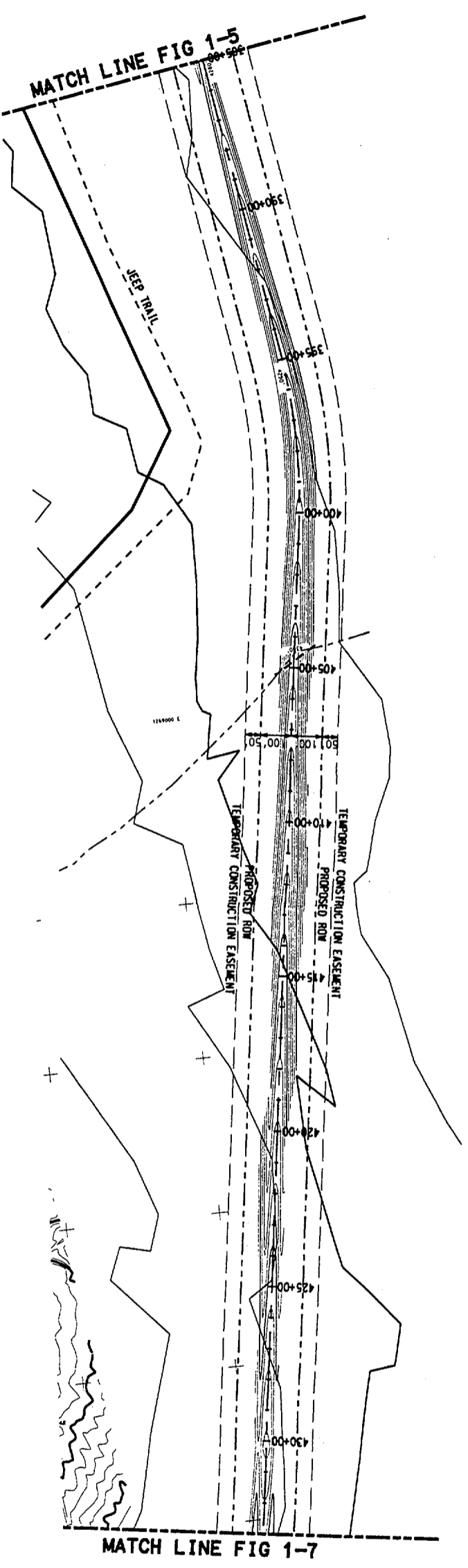


FIGURE 1-5
 PFSF RAILROAD
 ALTERNATE ROUTE PLAN AND PROFILE
 STA 337+00 - STA 385+00



PROFILE
 SCALE: 1" = 200' (HORIZ)
 1" = 20' (VERT)

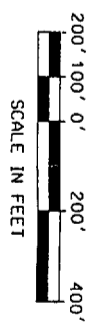
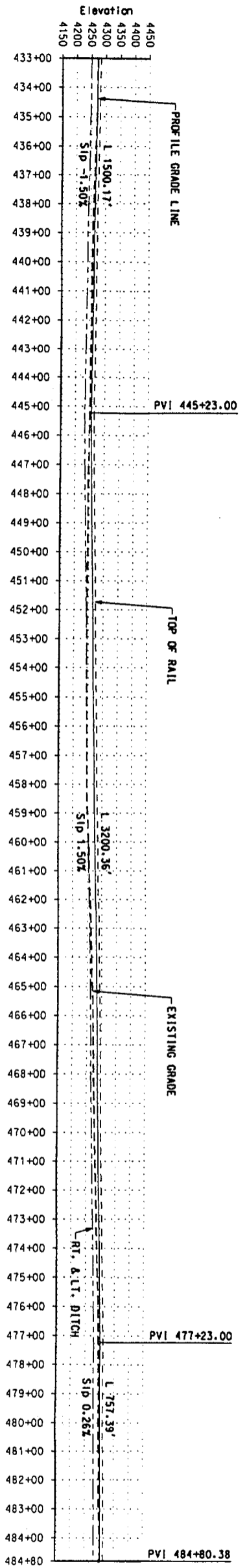
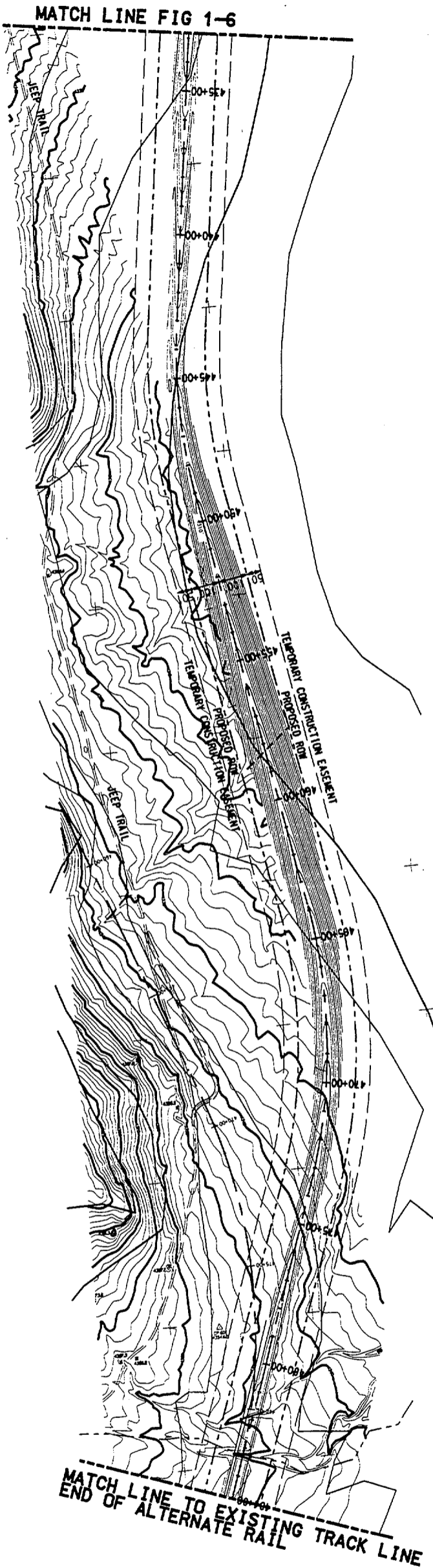


FIGURE 1-6
 PFSF RAILROAD
 ALTERNATE ROUTE PLAN AND PROFILE
 STA 385+00 - STA 433+00



PROFILE
SCALE: 1" = 200' (HOR)
1" = 20' (VERT)

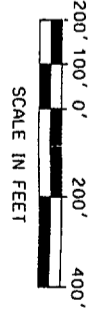
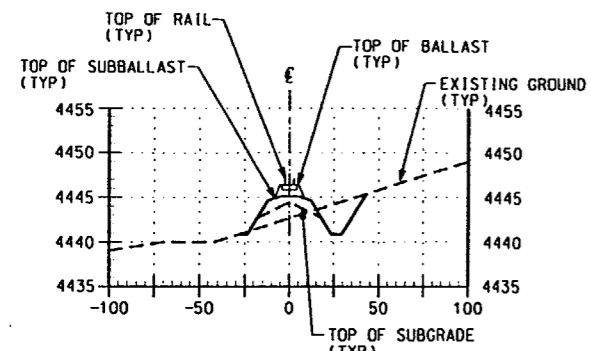
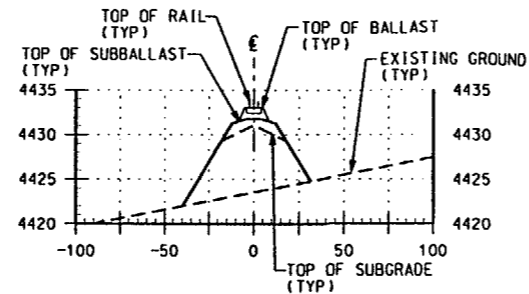


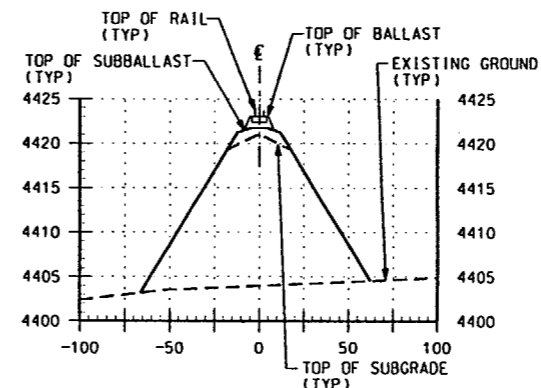
FIGURE 1-7
PFSF RAILROAD
ALTERNATE ROUTE PLAN AND PROFILE
STA 433+00 - STA 484+80



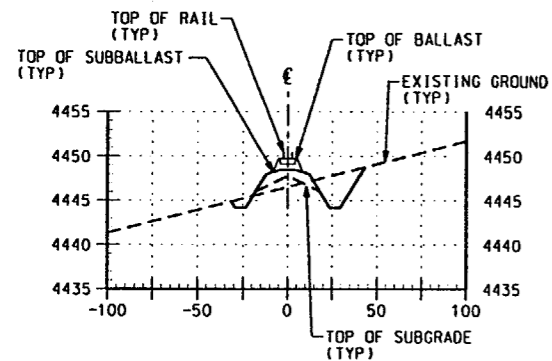
154+00



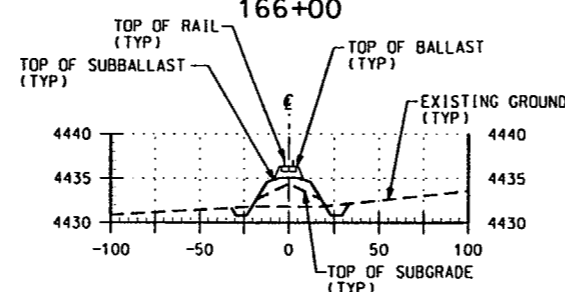
166+00



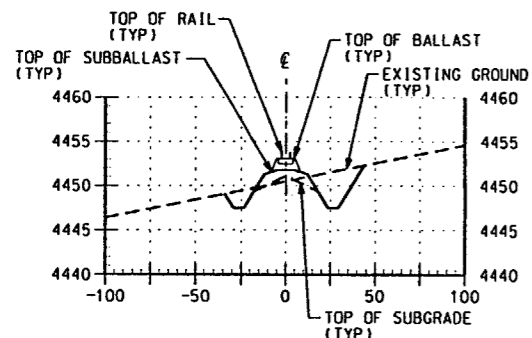
175+00



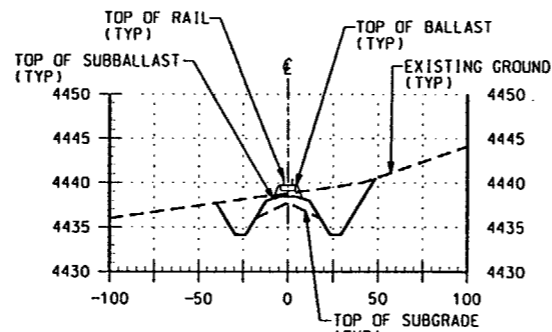
151+00



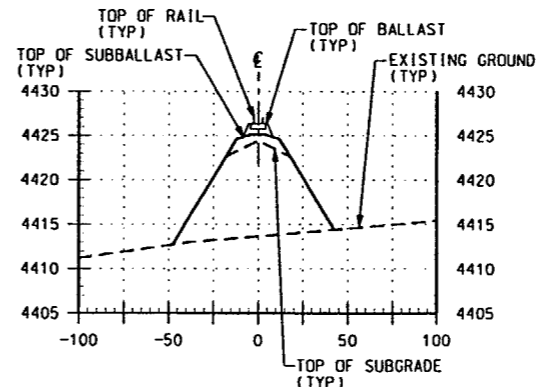
163+00



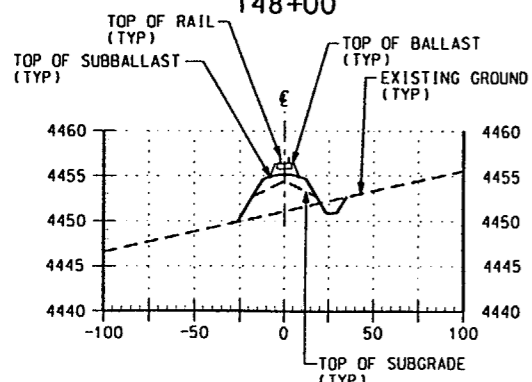
148+00



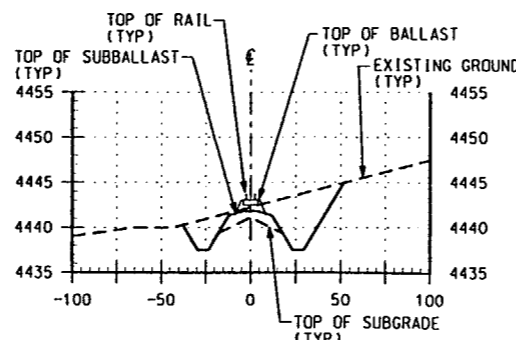
160+00



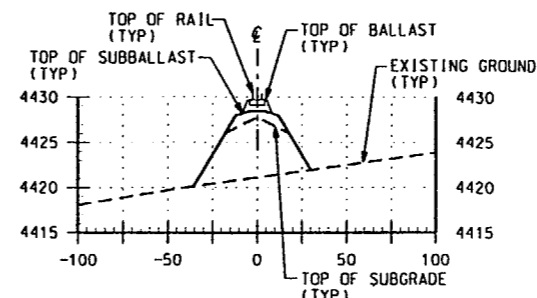
172+00



145+00



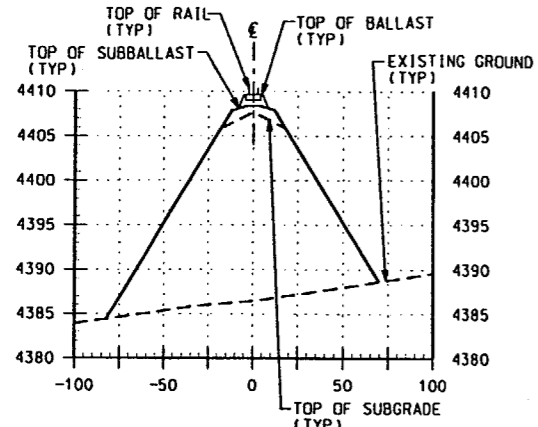
157+00



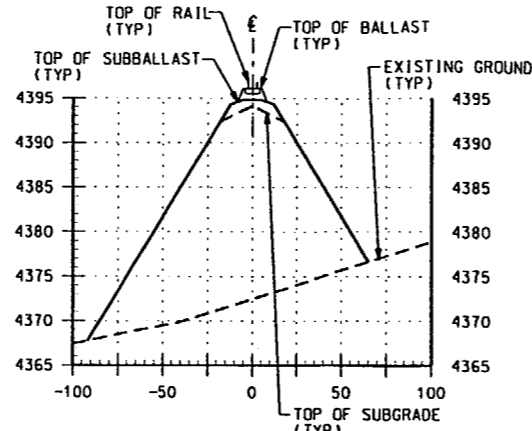
169+00

SECTIONS
SCALE: 1"=50' (HOR)
1"=10' (VERT)

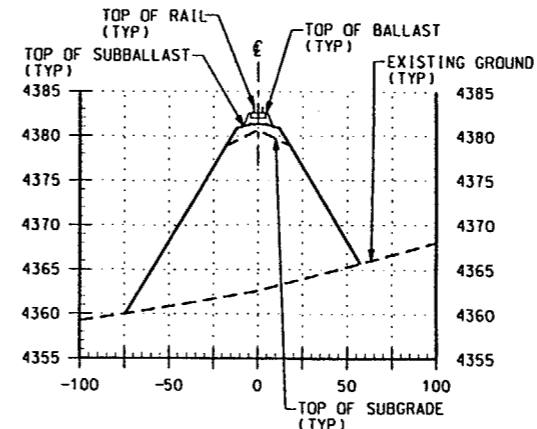
FIGURE 1-8
PFSF RAILROAD LINE
ALTERNATE ROUTE SECTIONS & DETAILS
STA 145+00 - 175+00



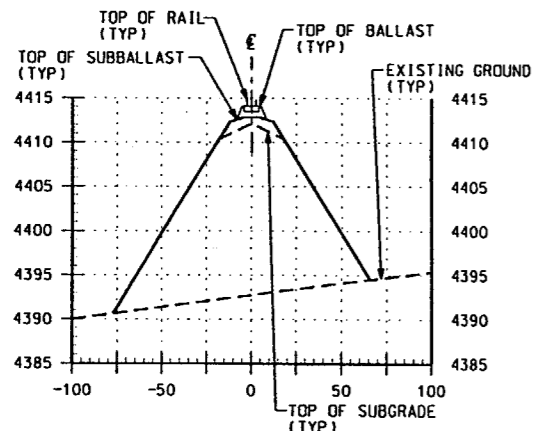
184+00



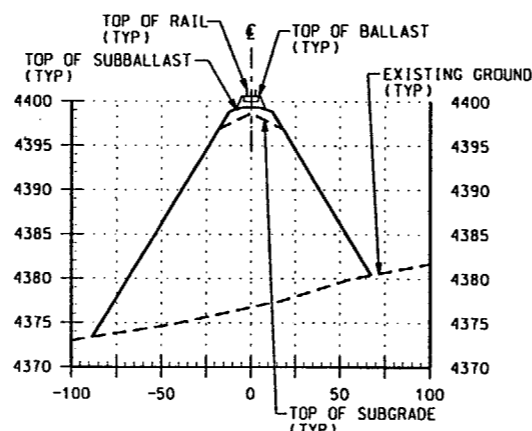
193+00



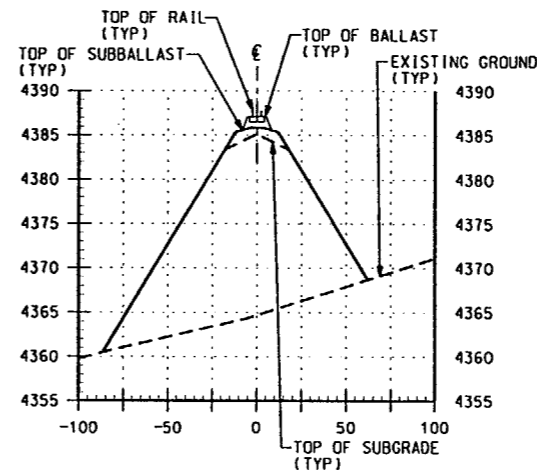
202+00



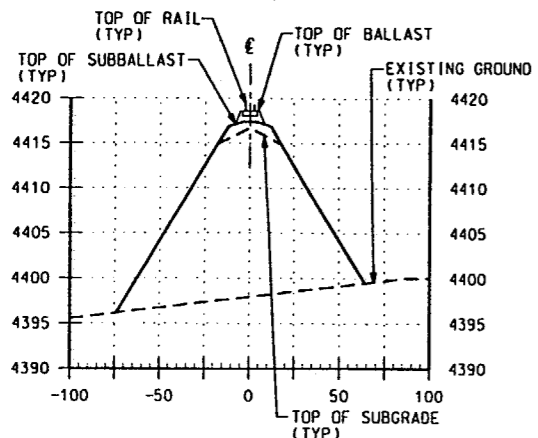
181+00



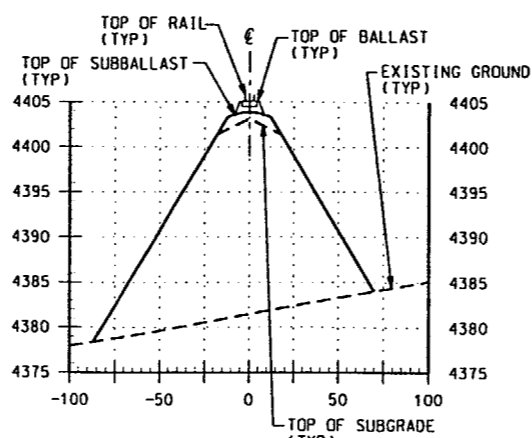
190+00



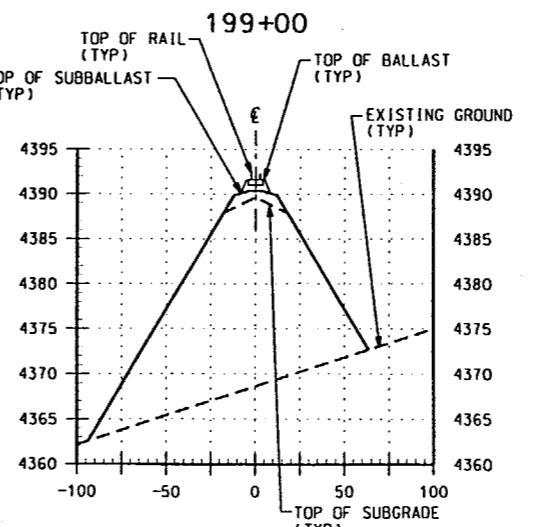
199+00



178+00



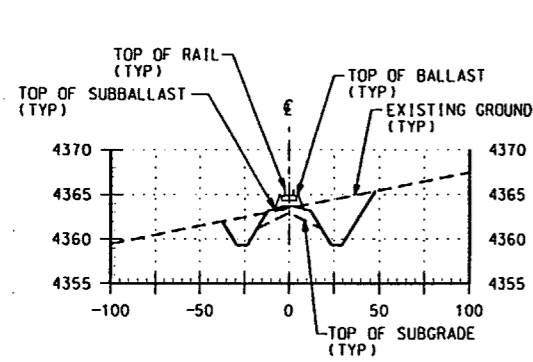
187+00



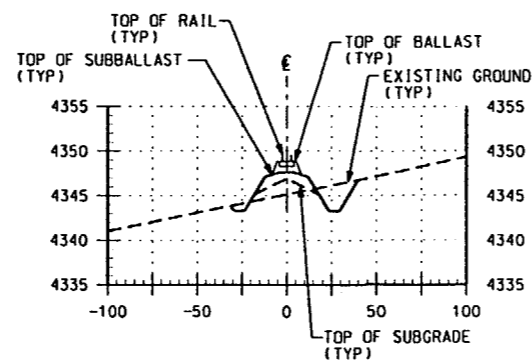
196+00

SECTIONS
SCALE: 1"=50' (HOR)
1"=10' (VERT)

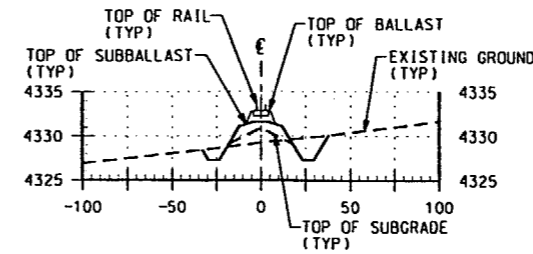
FIGURE 1-9
PFSF RAILROAD LINE
ALTERNATE ROUTE SECTIONS & DETAILS
STA 178+00 - 202+00



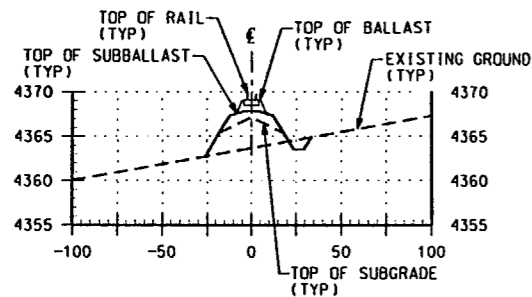
214+00



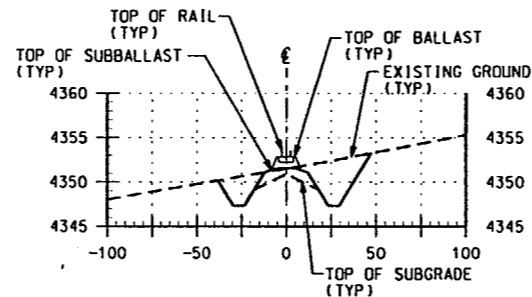
226+00



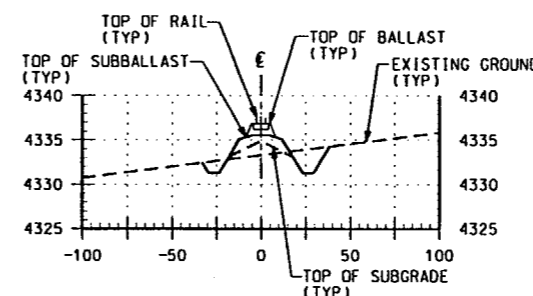
238+00



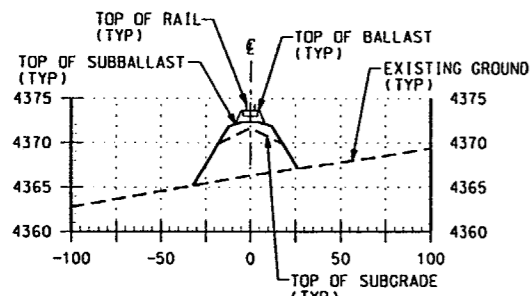
211+00



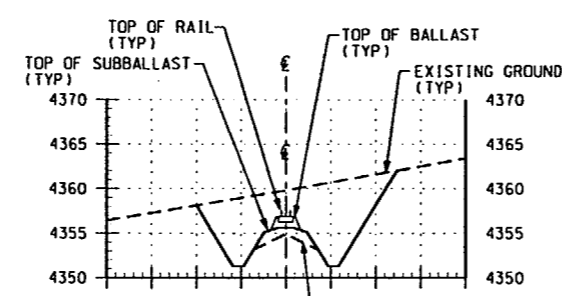
223+00



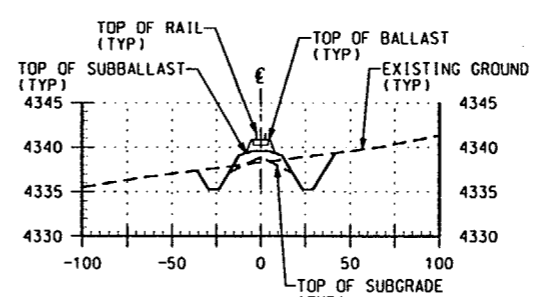
235+00



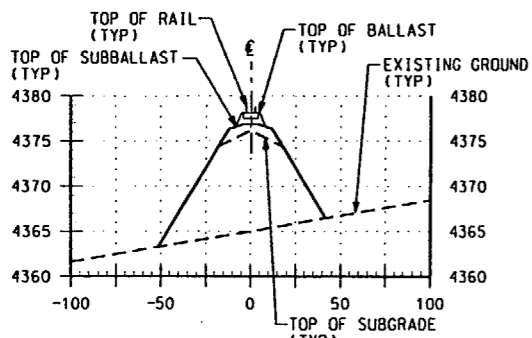
208+00



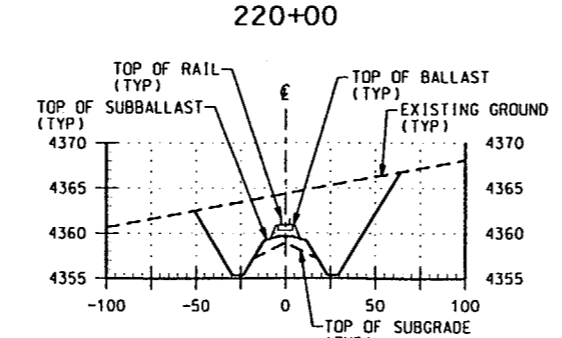
220+00



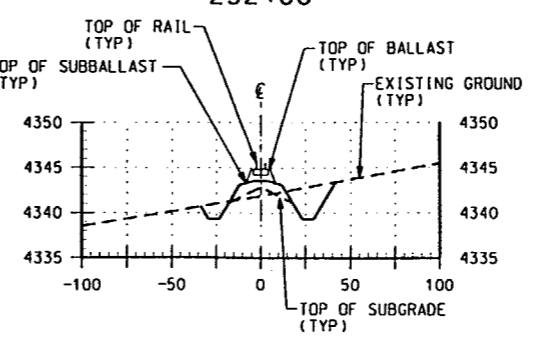
232+00



205+00



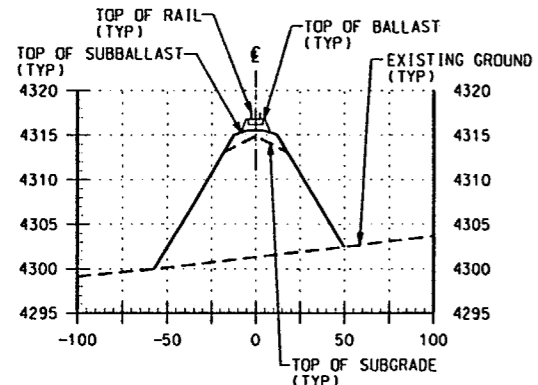
217+00



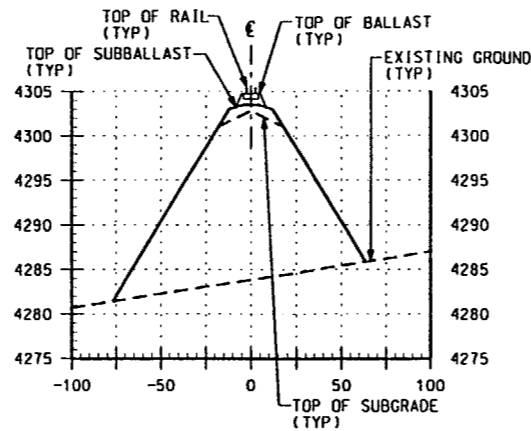
229+00

SECTIONS
SCALE: 1"=50' (HOR)
1"=10' (VERT)

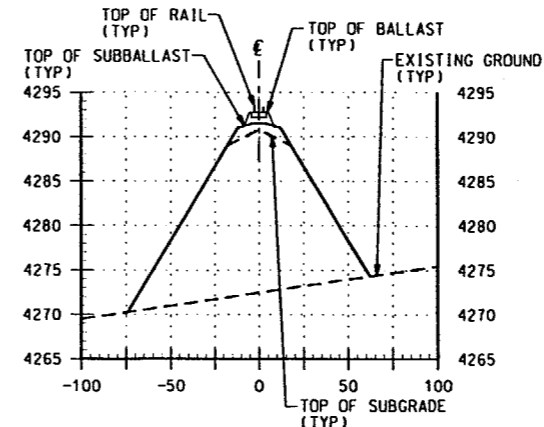
FIGURE 1-10
PFSF RAILROAD LINE
ALTERNATE ROUTE SECTIONS & DETAILS
STA 205+00 - 238+00



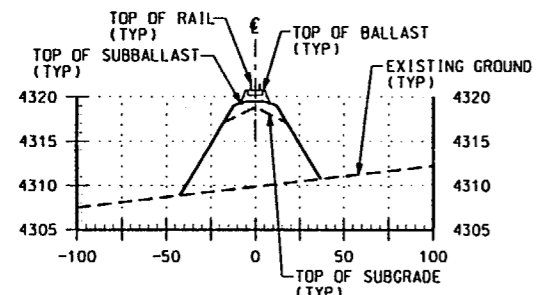
250+00



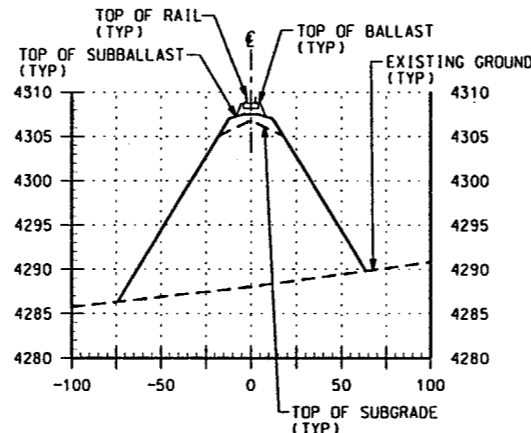
259+00



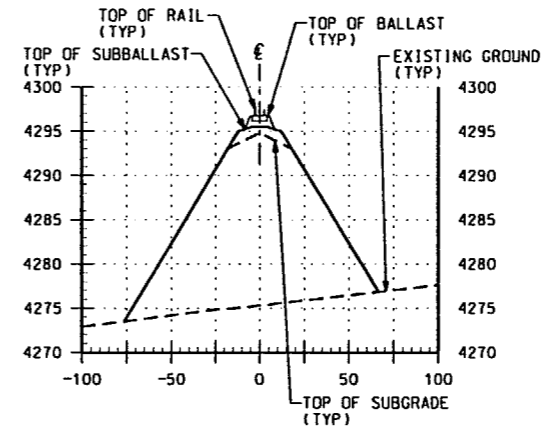
268+00



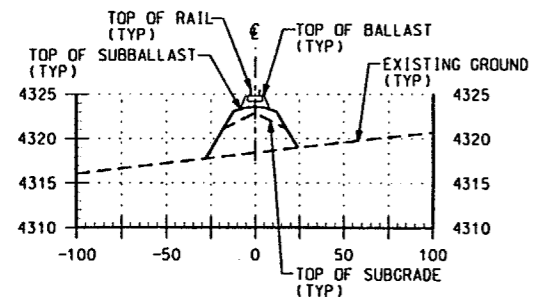
247+00



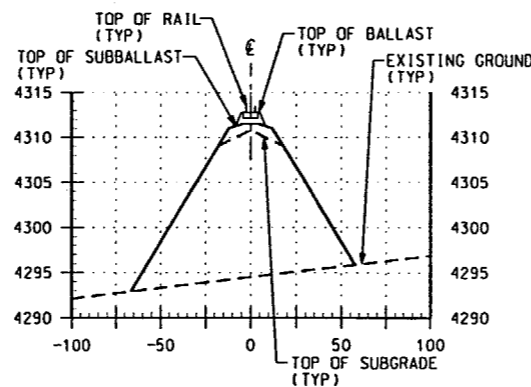
256+00



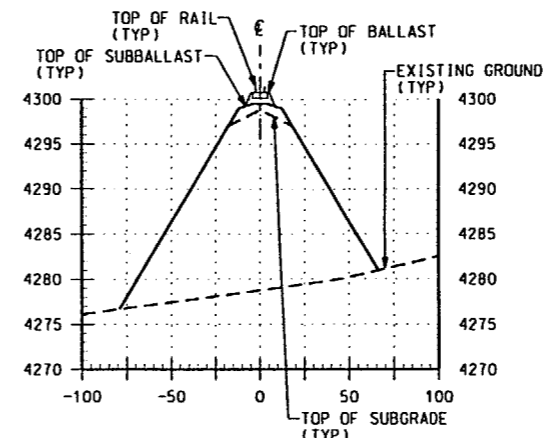
265+00



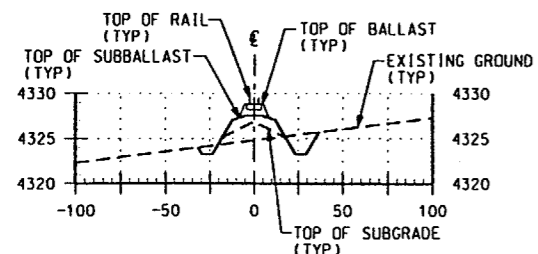
244+00



253+00



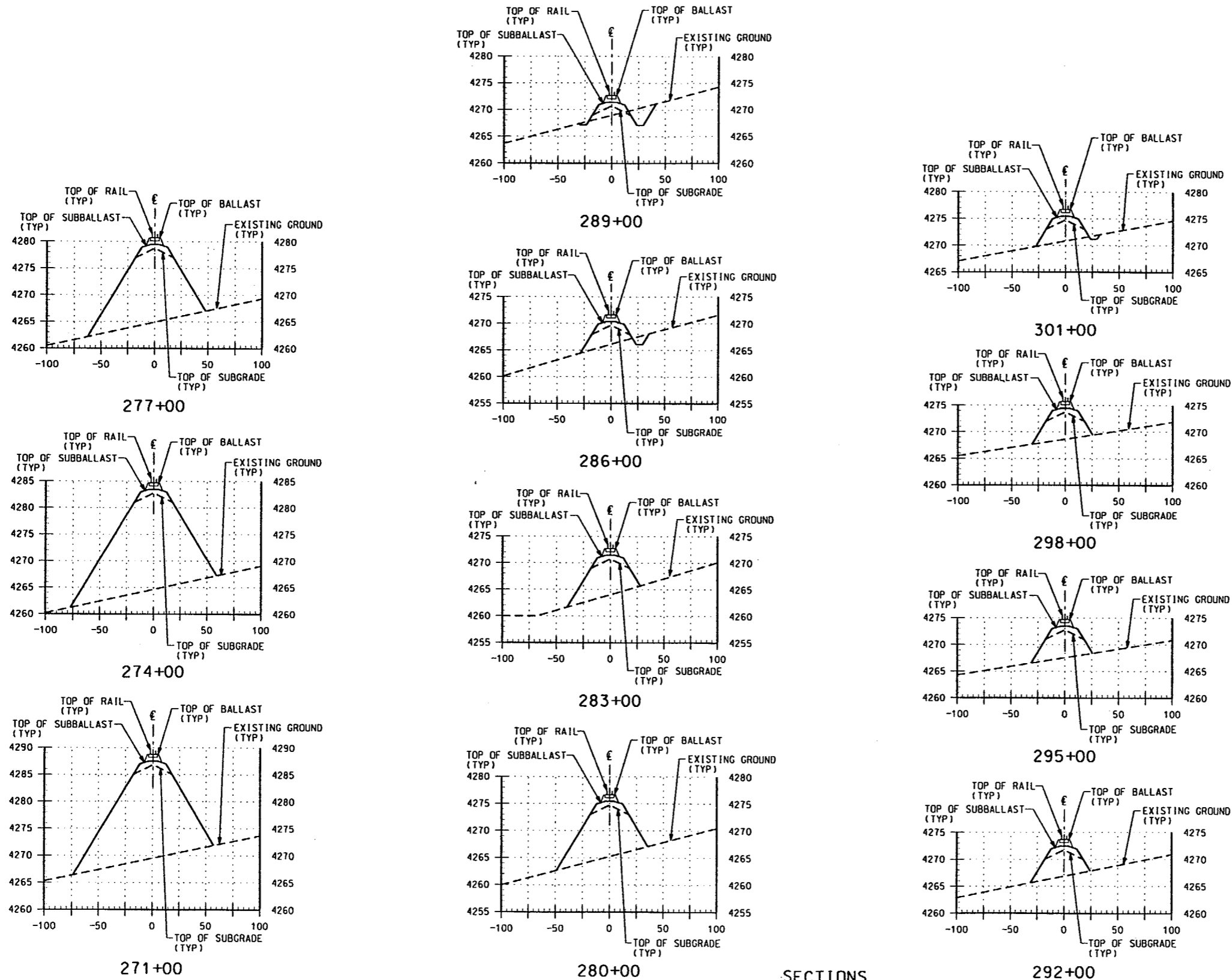
262+00



241+00

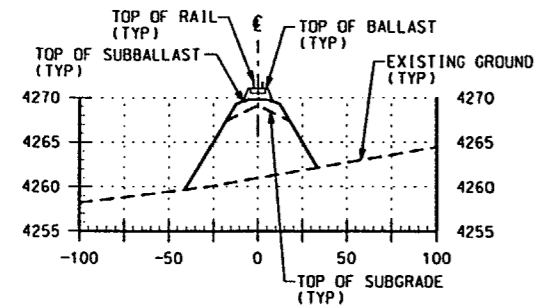
SECTIONS
SCALE: 1"=50' (HOR)
1"=10' (VERT)

FIGURE 1-11
PFSF RAILROAD LINE
ALTERNATE ROUTE SECTIONS & DETAILS
STA 241+00 - 268+00

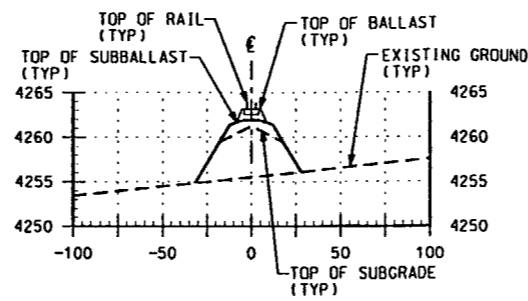


SECTIONS
 SCALE: 1"=50' (HOR)
 1"=10' (VERT)

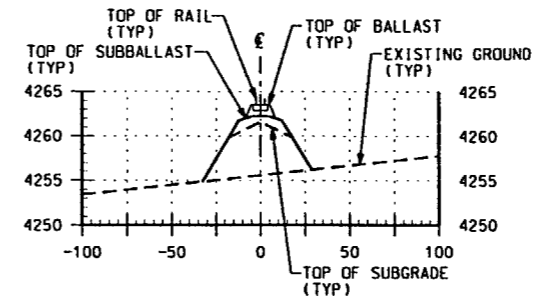
FIGURE 1-12
PFSF RAILROAD LINE
ALTERNATE ROUTE SECTIONS & DETAILS
STA 271+00 - 301+00



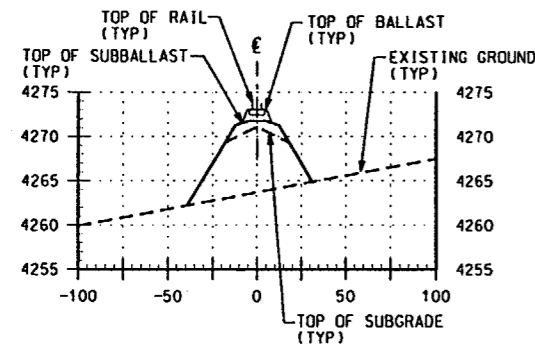
313+00



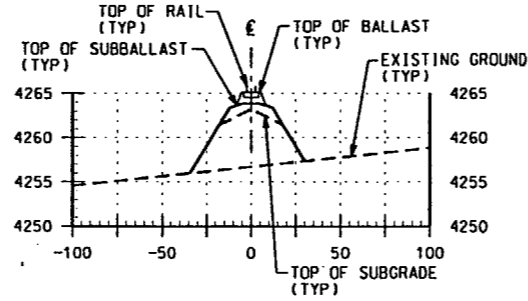
325+00



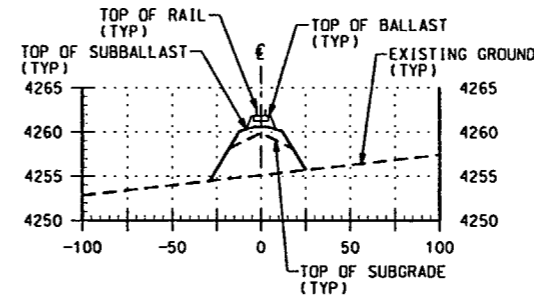
337+00



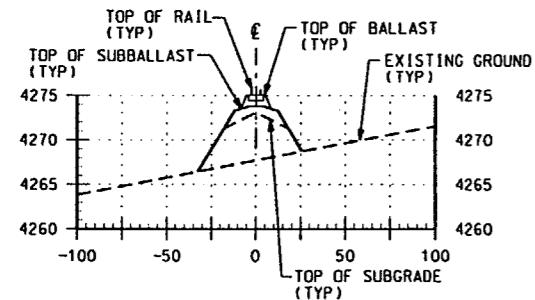
310+00



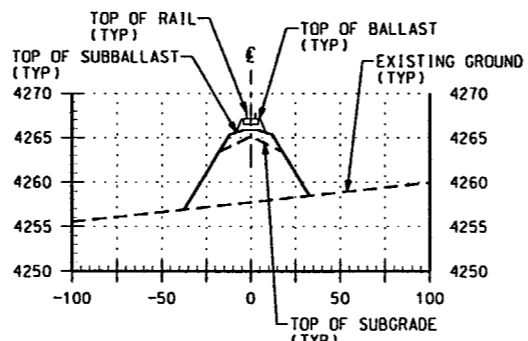
322+00



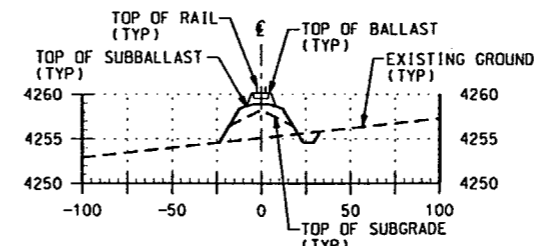
334+00



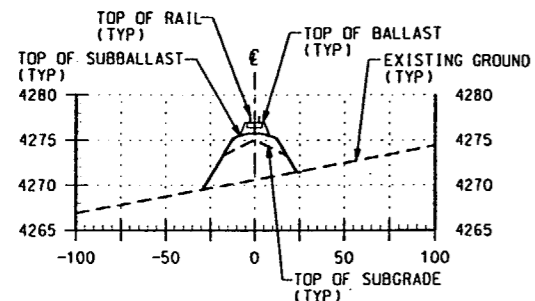
307+00



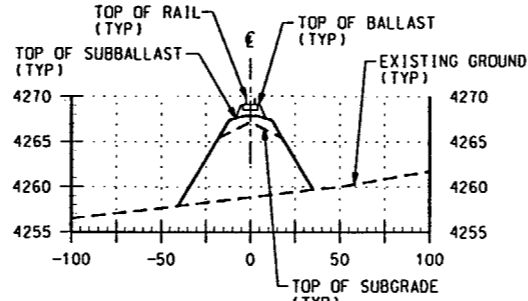
319+00



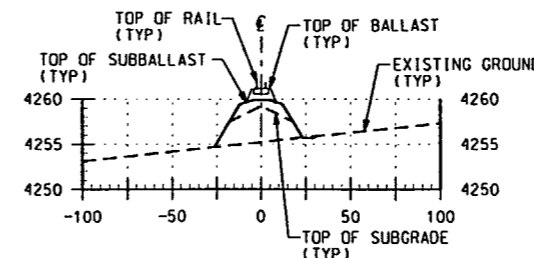
331+00



304+00



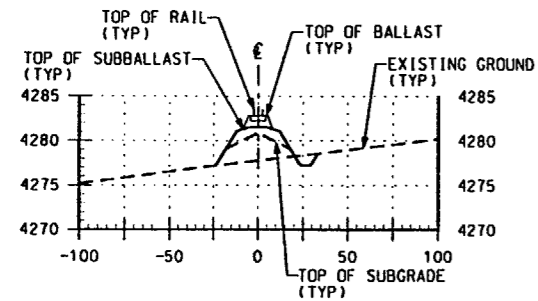
316+00



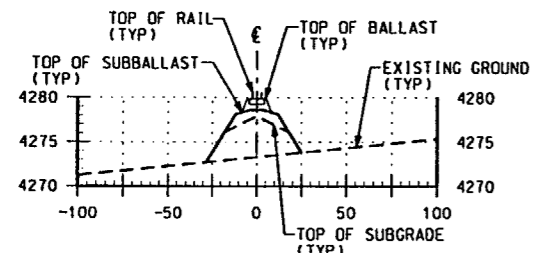
328+00

SECTIONS
SCALE: 1"=50' (HOR)
1"=10' (VERT)

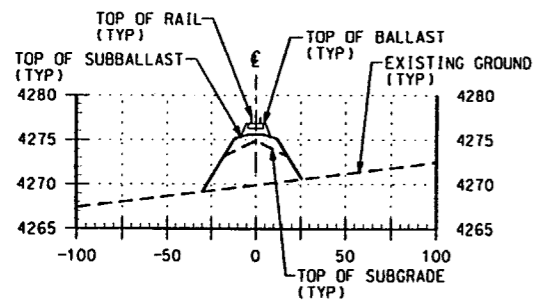
FIGURE 1-13
PFSF RAILROAD LINE
ALTERNATE ROUTE SECTIONS & DETAILS
STA 304+00 - 337+00



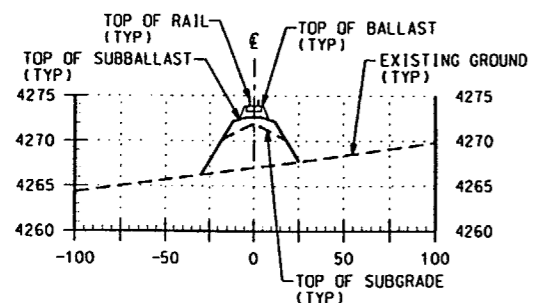
385+00



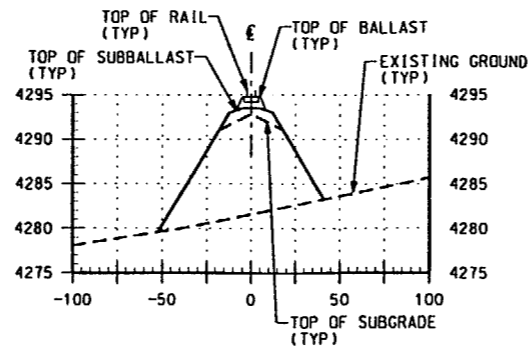
382+00



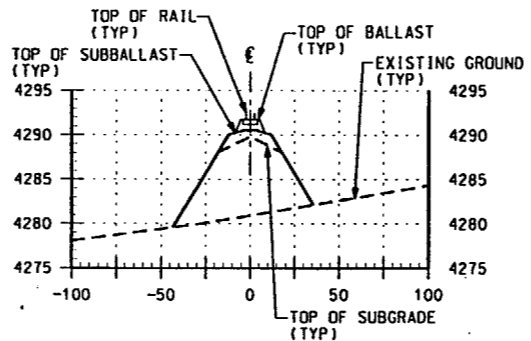
379+00



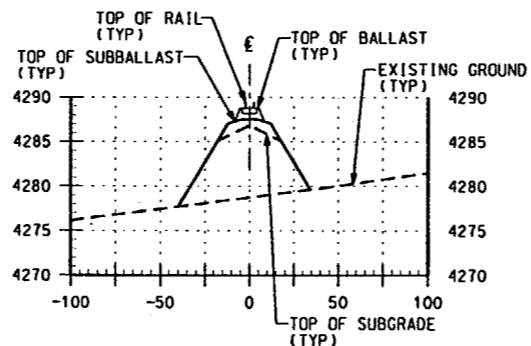
376+00



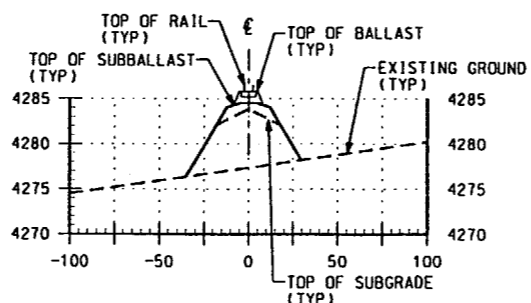
397+00



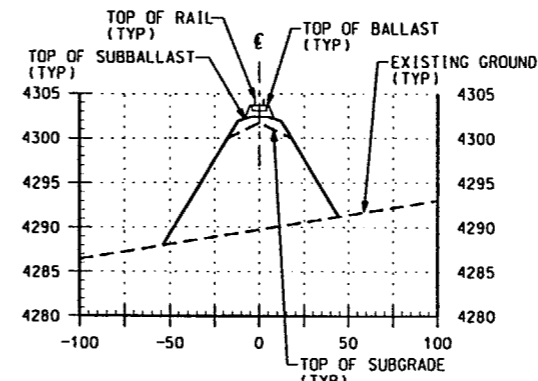
394+00



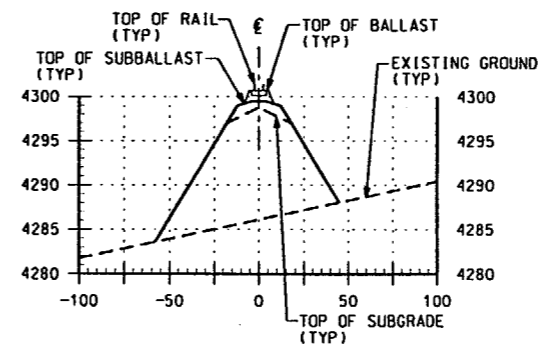
391+00



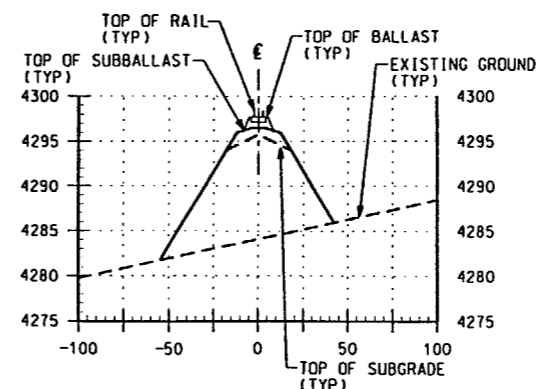
388+00



406+00



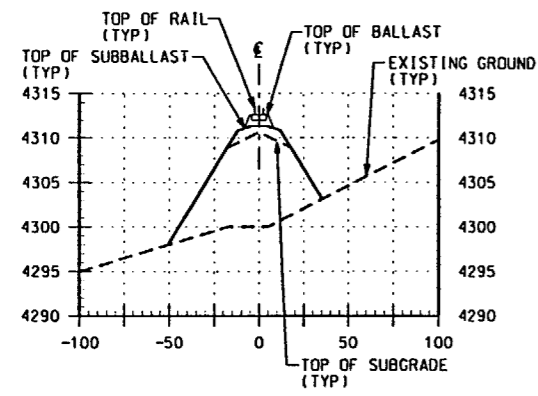
403+00



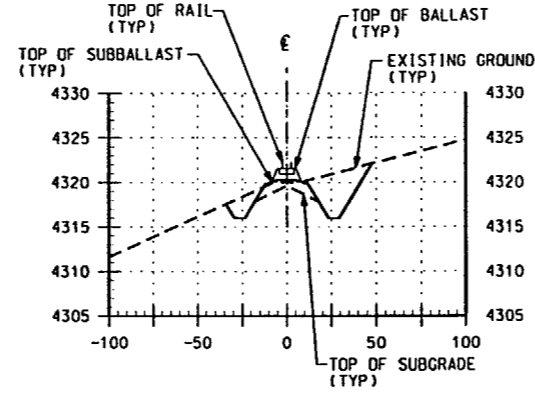
400+00

SECTIONS
SCALE: 1"=50' (HOR)
1"=10' (VERT)

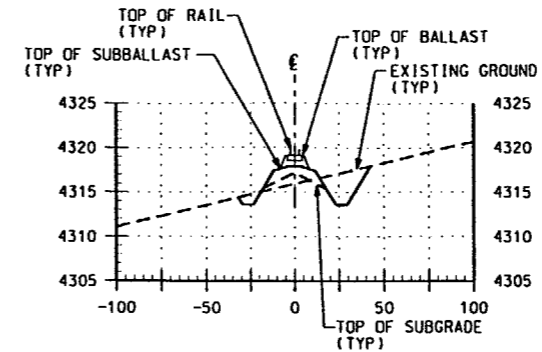
FIGURE 1-15
PFSF RAILROAD LINE
ALTERNATE ROUTE SECTIONS & DETAILS
STA 376+00 - 406+00



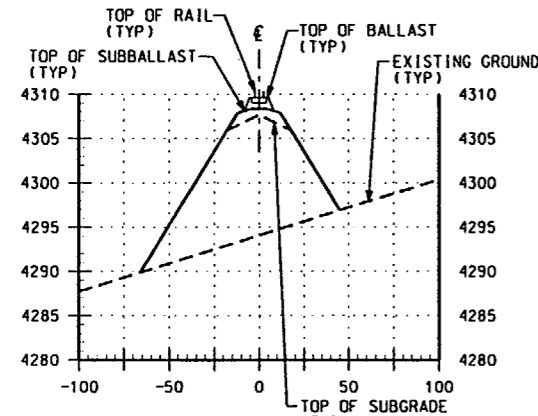
415+00



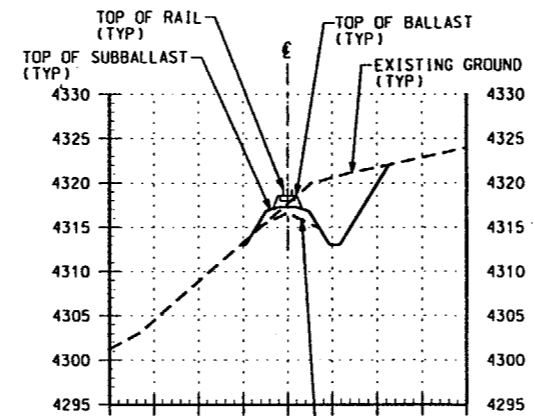
424+00



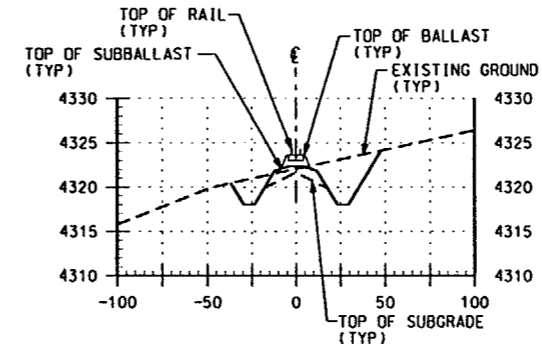
436+00



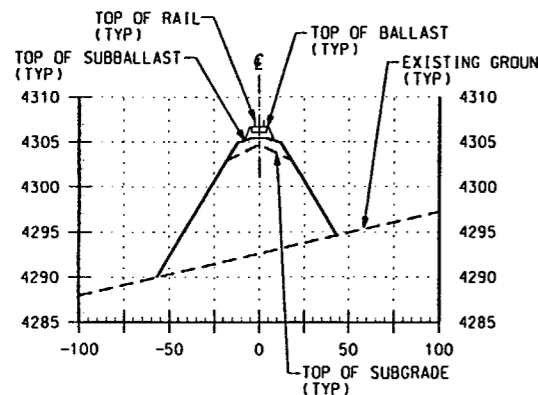
412+00



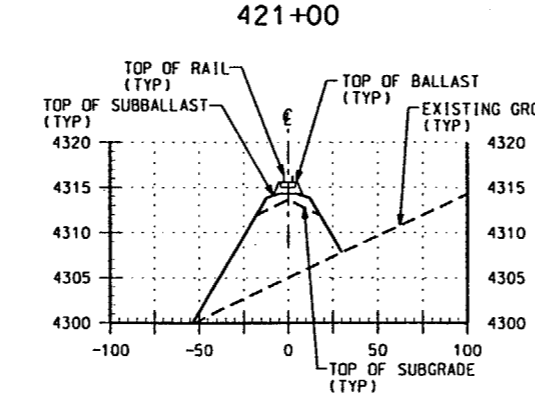
421+00



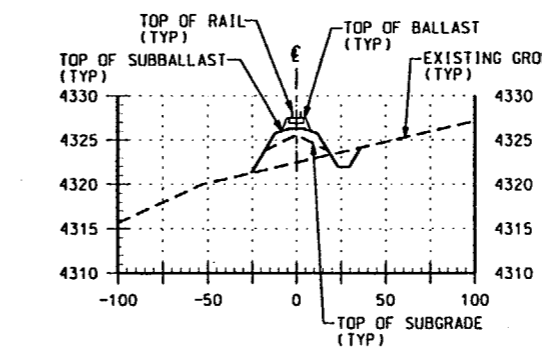
433+00



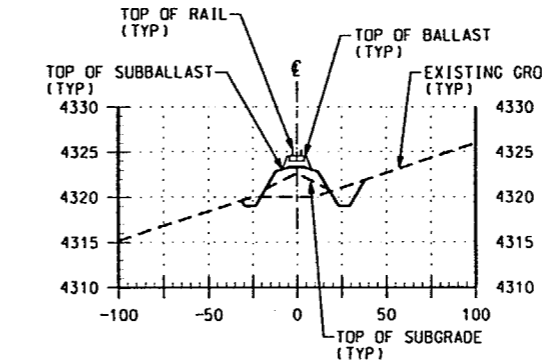
409+00



418+00



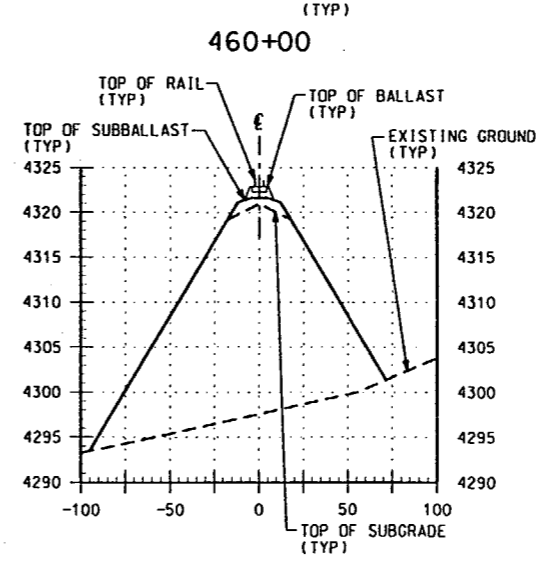
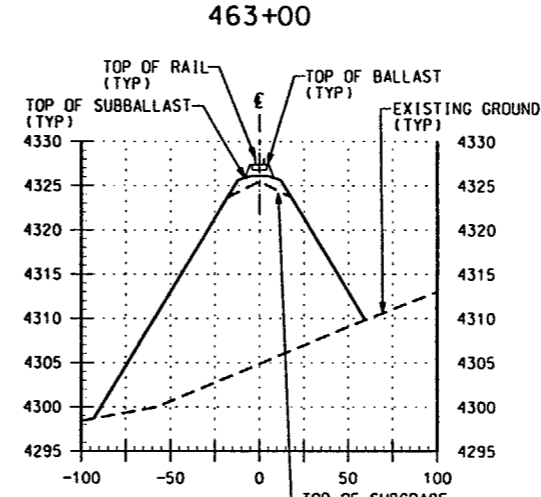
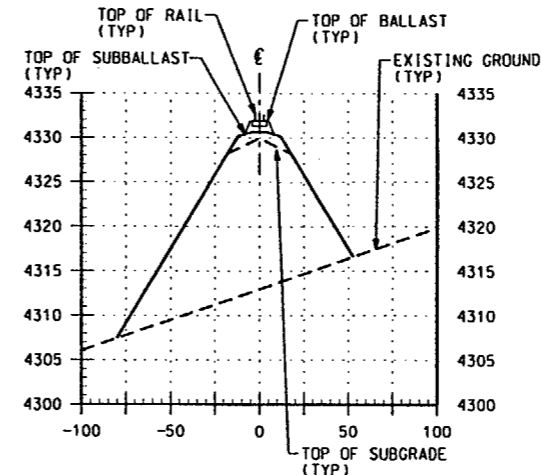
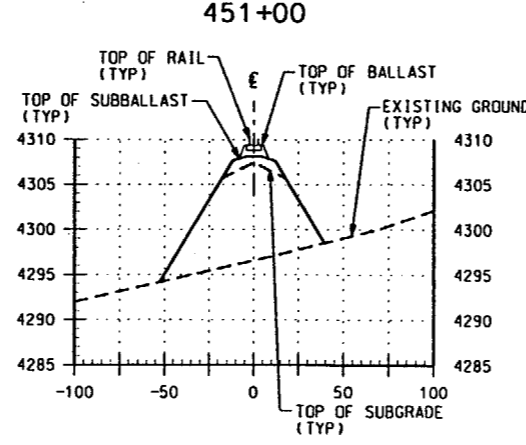
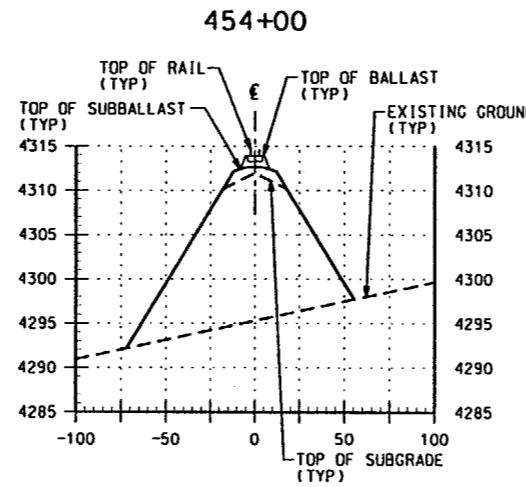
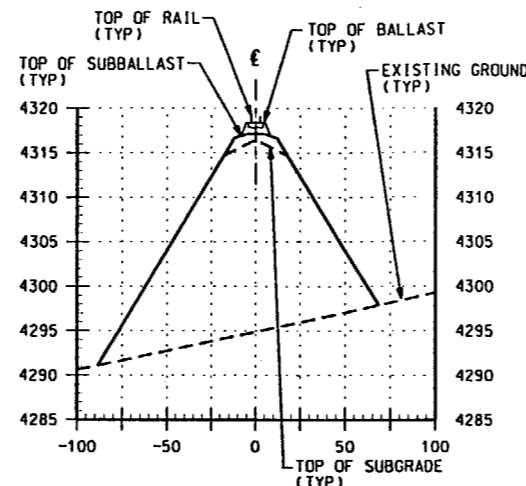
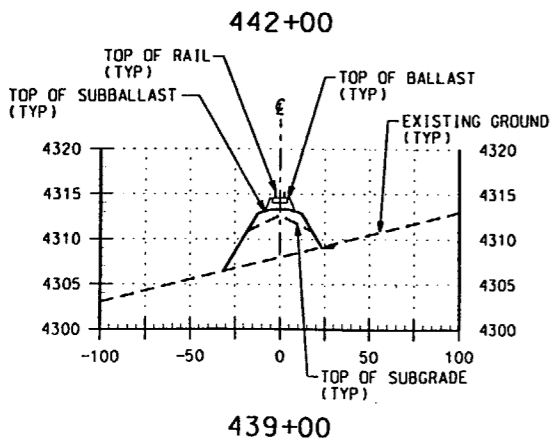
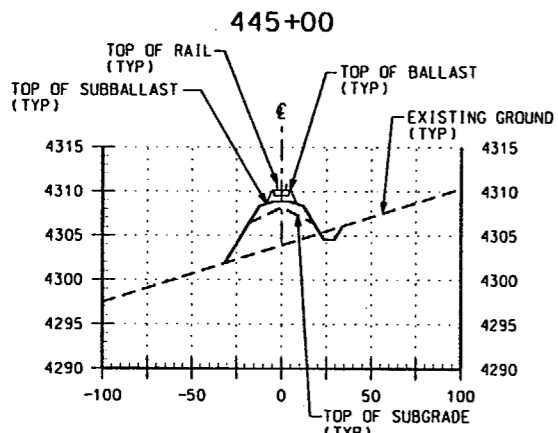
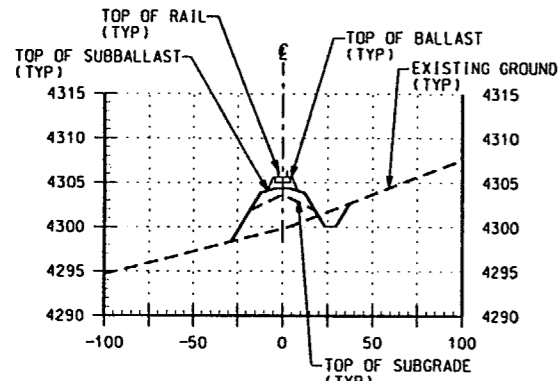
430+00



427+00

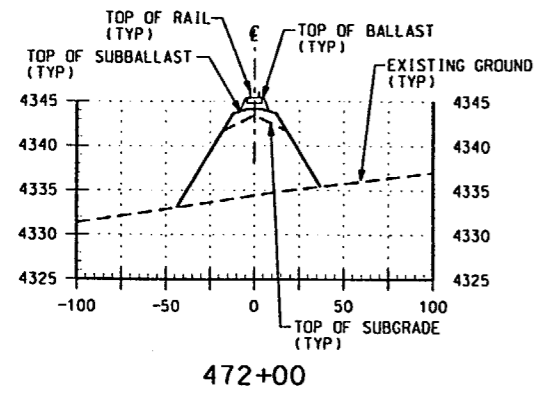
SECTIONS
SCALE: 1"=50' (HOR)
1"=10' (VERT)

FIGURE 1-16
PFSF RAILROAD LINE
ALTERNATE ROUTE SECTIONS & DETAILS
STA 409+00 - 436+00

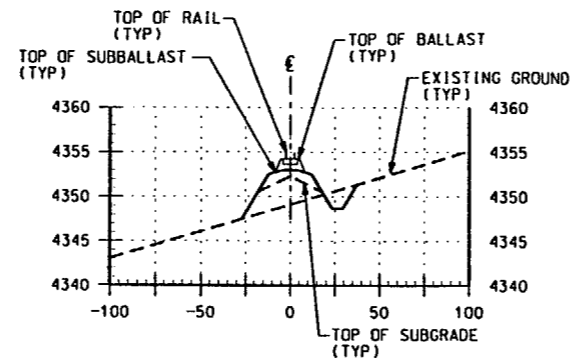


SECTIONS
 SCALE: 1"=50' (HOR)
 1"=10' (VERT)

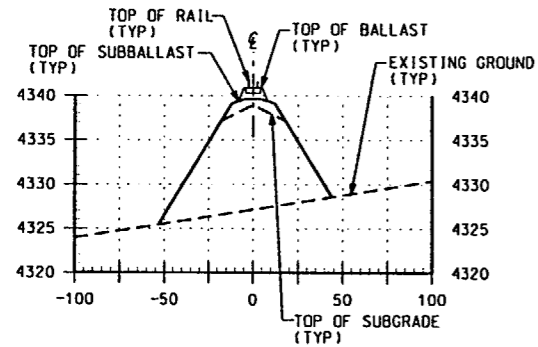
FIGURE 1-17
 PFSF RAILROAD LINE
 ALTERNATE ROUTE SECTIONS & DETAILS
 STA 439+00 - 463+00



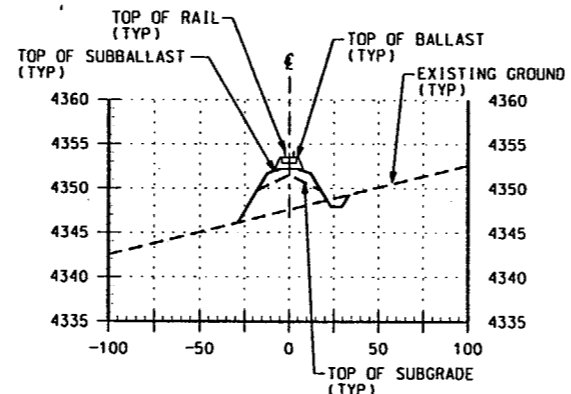
472+00



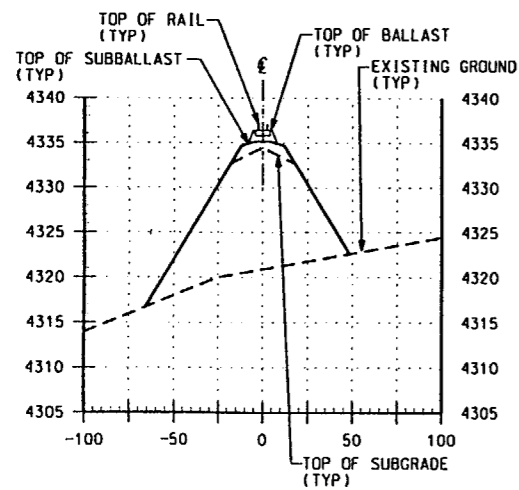
481+00



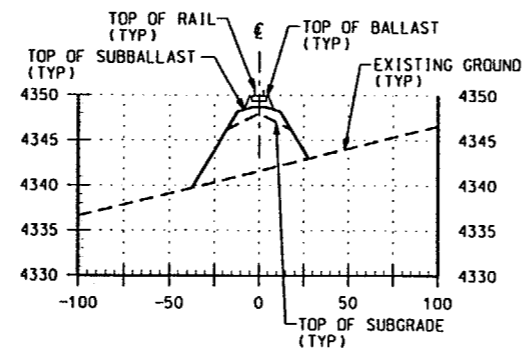
469+00



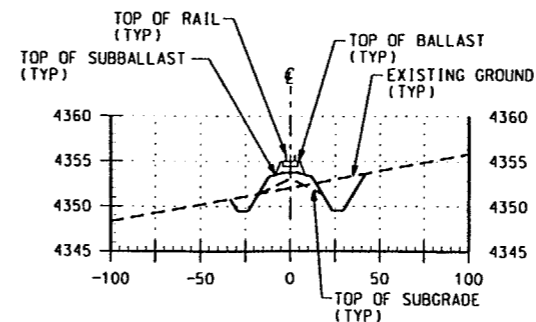
478+00



466+00



475+00



484+00

SECTIONS
 SCALE: 1"=50' (HOR)
 1"=10' (VERT)

FIGURE 1-18
 PFSF RAILROAD LINE
 ALTERNATE ROUTE SECTIONS & DETAILS
 STA 466+00 - 484+00