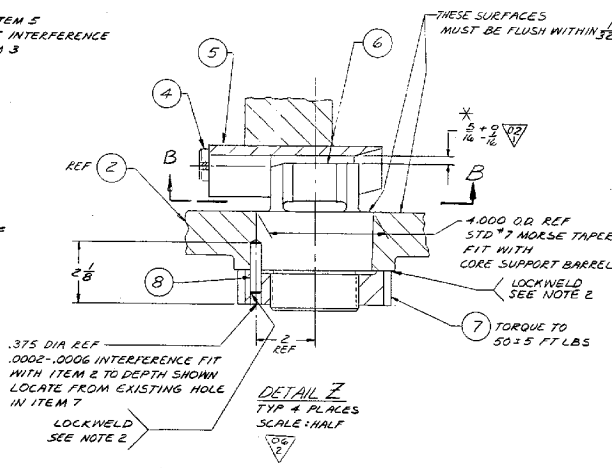
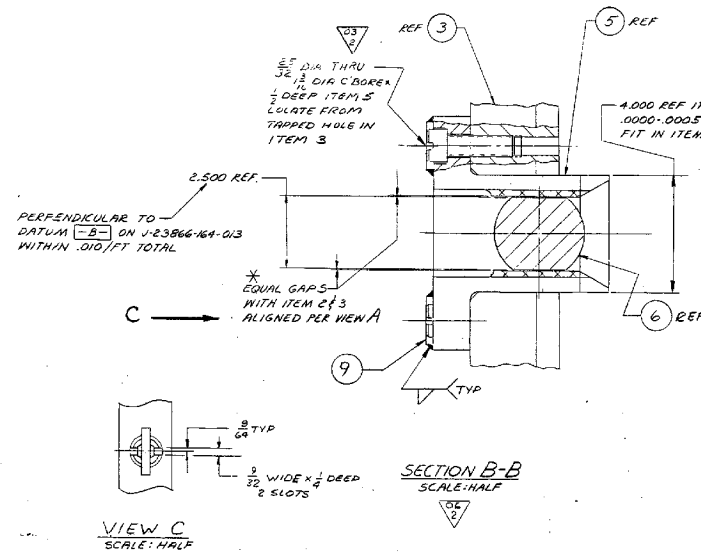
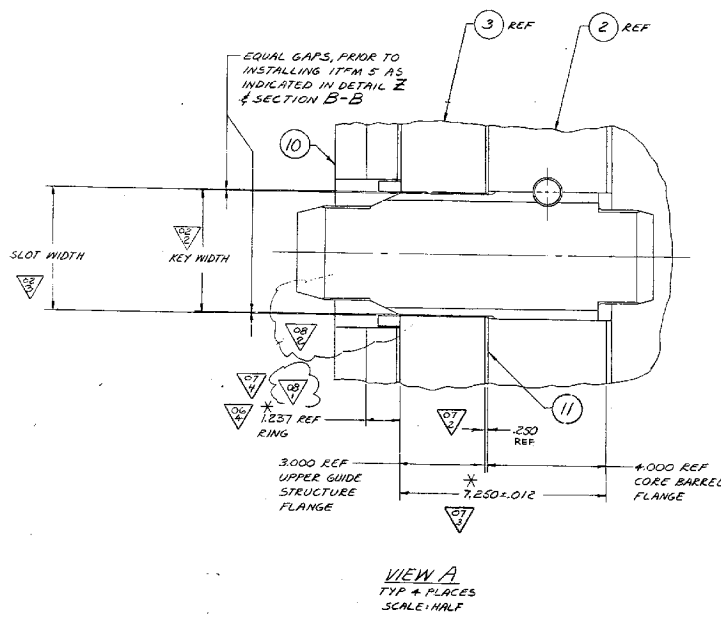


1 INTERNALS ASSEMBLY



GROUP NO. & QUANTITY		ITEM NO.	NAME	PIECE NO.	MATERIAL	REMARKS
6	5	1	INTERNALS ASSY			
		2	CORE SUPPORT ASSY			
		3	UPPER GUIDE STRUCTURE ASSY			
		4	SOCKET HEAD CAP SCREW			
		5	ALIGNMENT LUG			
		6	GUIDE PIN			
		7	PIN			
		8	DONUT PIN			
		9	LOCKING BAR			
		10	HOLD DOWN RING			
		11	RING SHIM			

3. MATERIAL ASTM A-193-66, SPI-1
4. MATERIAL ASTM A-276-65, SPI-2
- WITH ITEMS 4 & 5 ALIGNED AS SHOWN BY VIEW A
- INSPECT & RECORD DISPLACEMENT OF CENTERLINES OF FUEL ALIGNMENT PLATE AND CORE SUPPORT PLATE
6. MACHINE BOTTOM SURFACE AT EDGE OF CORE SUPPORT PLATE, IF NECESSARY, TO OBTAIN THIS DIMENSION DO NOT MACHINE MORE THAN 3/8" FROM THE EDGE OR REDUCE PLATE EDGE THICKNESS TO LESS THAN 1.750
- SLIGHTLY COAT THREADS WITH NEOLUBE PRIOR TO TORQUING
- * INDICATES AS BUILT DIMENSIONS TO BE RECORDED PER CENPD SPEC 23866-16-40-1
2. PRODUCT TO BE IN ACCORDANCE WITH CENPD SPEC 23866-16-40-1
1. DIMENSIONING & TOLERANCING PER USAS1 114.5-1966

OPPD TAG NUMBER RC-1

J23866-164-003

EA-FC-00-134 DF 12/01

OMAHA PUBLIC POWER DISTRICT
FORT CALHOUN UNIT NO. 1

REV.	DESCRIPTION	DATE	BY	CHKD.	APP'D.
1	VIEW A: 1" WAS 1/8" E-REVISED ITEM 3 & 10. PER ADDITION OF TABS TO UGS KEY SLOTS [E-BM ITEM 10 WAS E-23866-164-13] PER REV REG. 23866-1				
2	VIEW B: 1" WAS 1/8" E-REVISED ITEM 3 & 10. PER ADDITION OF TABS TO UGS KEY SLOTS [E-BM ITEM 10 WAS E-23866-164-13] PER REV REG. 23866-1				
3	VIEW C: 1" WAS 1/8" E-REVISED ITEM 3 & 10. PER ADDITION OF TABS TO UGS KEY SLOTS [E-BM ITEM 10 WAS E-23866-164-13] PER REV REG. 23866-1				

ALL ITEMS DEPICTED ON THIS DRAWING ARE WITHIN LICENSE RENEWAL SCOPE.

FOR INFORMATION ONLY

NOTE: THIS PRINT IS TO BE USED FOR THE FCS LICENSE RENEWAL PROJECT ONLY. IT MAY NOT REFLECT THE MOST CURRENT REVISION OF THIS DRAWING.