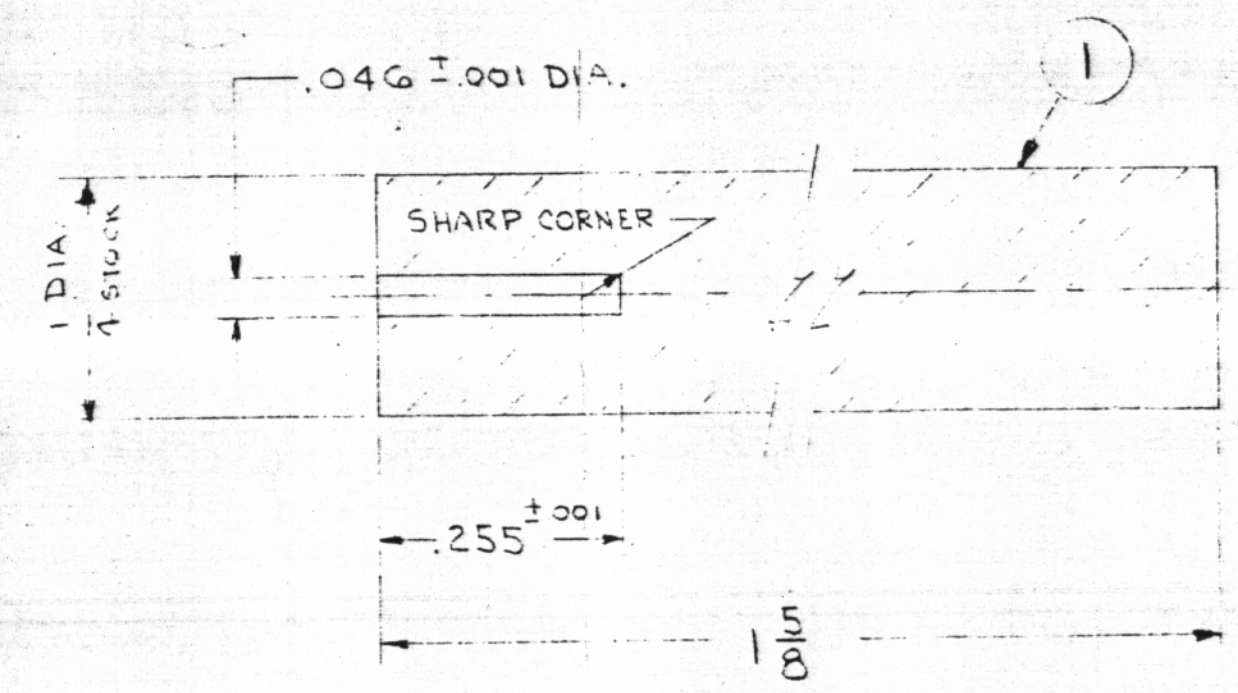
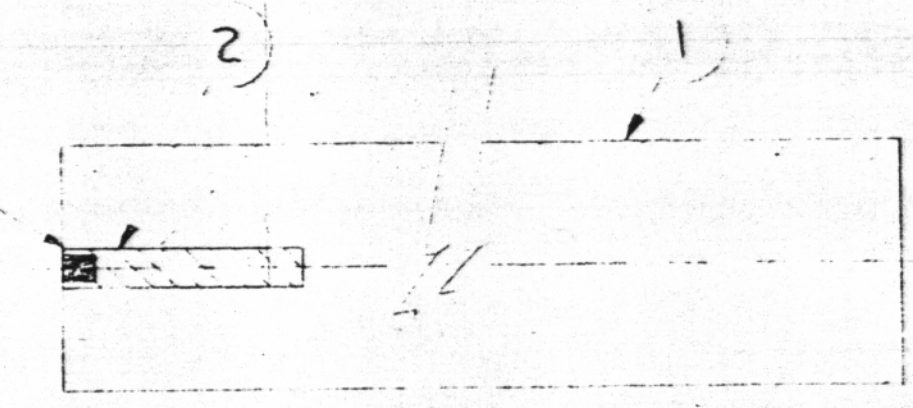


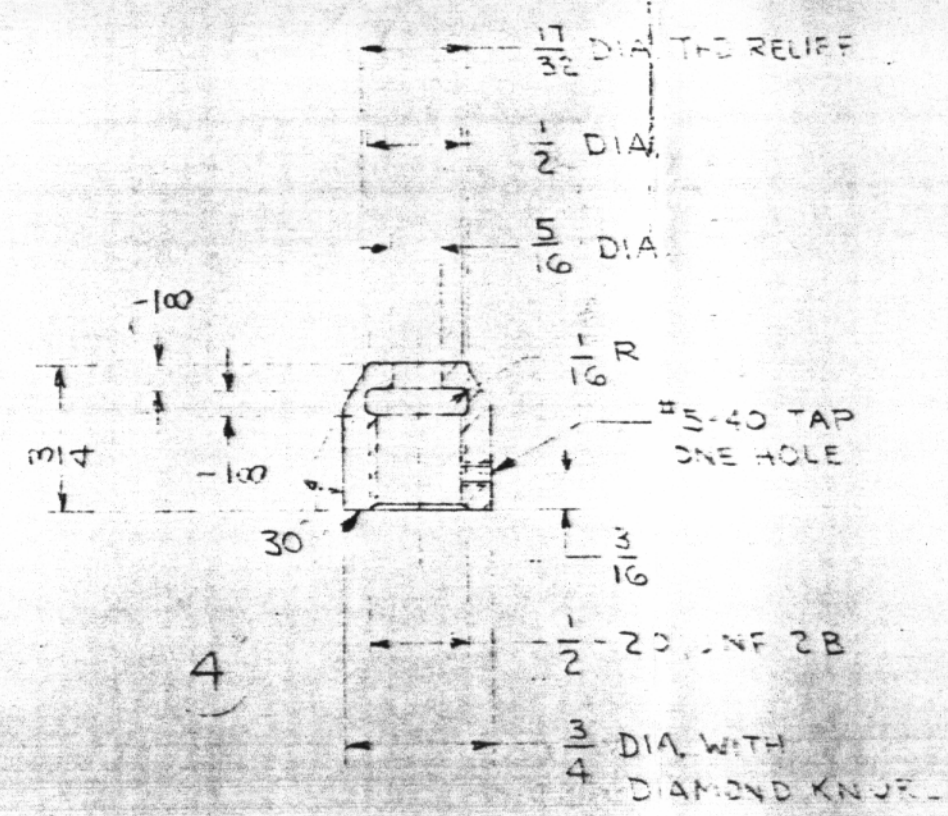
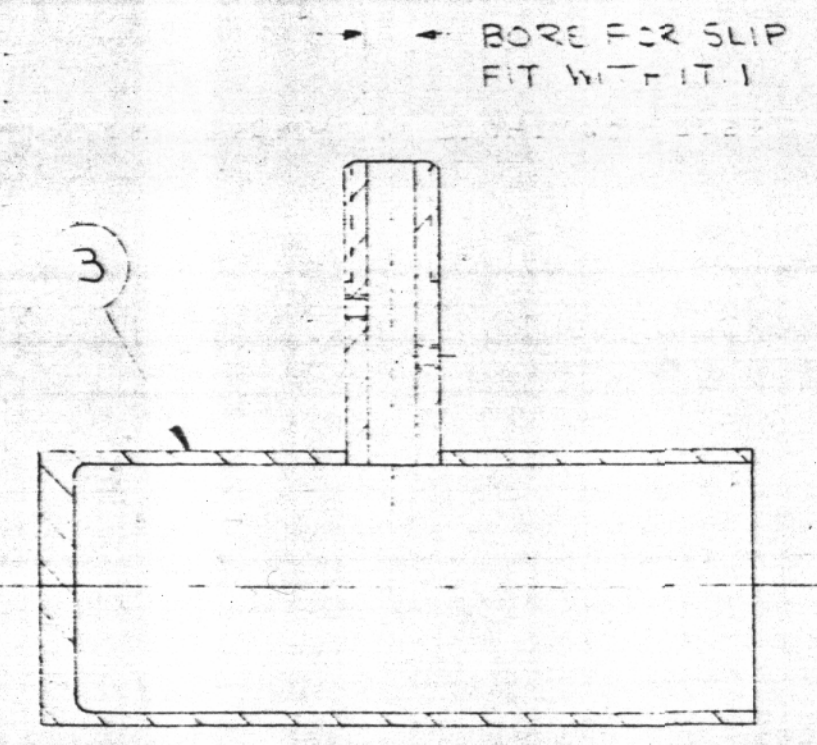
GROUP-2



CEMENT TO N POSITION WITH EASTMAN CEMENT



GROUP-1



- C- VINYL COVERED PLASTIC INSULATED CABLE 12 CONDUCTORS OF # 22 STRANDED WIRES.
- B- B.O. FR. MINN. MINING & MFG. ST. PAUL MINN.
- A- B.O. SEMI-ELEMENTS SANDHURST PA.

ITEM	NOMENCLATURE OR DESCRIPTION	MATERIAL	REMARKS	GR 1	2	3	UNIT WT.
10	SCINTILLATOR ASSY. GRITHSDWJ						1
9	AMPHENOL AN. MS. 11 PIN PLUG, 24-20						1
C	CABLE 7 FT LONG						1
7	TUBE SOCKET & CABLE CONNECTOR	TI-MIP-119 3-24					1
6	PHOTOMULTIPLIER TUBE	RCA 1P21					1
5	SET SCR. #5-40 1/4 LONG	STEEL					3
4	ADJUSTING NUT	ALUMINUM					1
3	TUBE HOUSING GR IED SK-307981-B						1
B	SOURCE HOLDER PER IED SK-308080-A						1
A	PLASTIC SCINTILLATOR						1

LIST OF MATERIALS		SUB. 1	
<p>GEOMETRIC SYMBOLS</p> <p>STRAIGHTNESS</p> <p>FLATNESS</p> <p>ANGULARITY</p> <p>PERPENDICULARITY</p> <p>PARALLELISM</p> <p>CONCENTRICITY</p> <p>TRUE POSITION</p> <p>ROUGHNESS</p> <p>SYMMETRY</p> <p>MAXIMUM MATERIAL CONDITION</p> <p>FREE SURFACES</p>	<p>TOLERANCE &amp; MACHINING NOTES</p> <p>UNLESS OTHERWISE INDICATED ON FACE OF DWG</p> <p>ALL UNTOLERANCED DIMENSIONS ... ± .015</p> <p>ANGULAR MACHINED SURFACES ... ± 1/2°</p> <p>CHAMFERS &amp; WELD PREPARATIONS ... ± 2°</p> <p>SHARP EDGES TO BE REMOVED</p> <p>RADIUS OR CHAMFER ... 1:64 TO 1:32</p> <p>MAX MACHINED SURFACE ROUGHNESS ... 250 RMS</p> <p>UNSPECIFIED GEOMETRIC TOLERANCES TO FALL WITHIN LIMITS OF SIZE DIMENSION TOLERANCE</p> <p>PLUGS ... UNIFIED 24-28 NC</p> <p>1/2" THREADS TO BE CHAMFERED 30°</p> <p>1/2" THREADS TO BE CHAMFERED 30°</p> <p>1/2" TAPPED HOLES TO BE C&amp;K 120° TO MAJOR DIA</p> <p>▲ DENOTES BASIC DIMENSION ON ACTUAL TRUE LOCATION</p> <p>DATE: 10/15/63</p> <p>W. E. ZER</p> <p>CHKD: [Signature]</p> <p>APP: [Signature]</p>	<p>WESTINGHOUSE ELECTRIC CORPORATION</p> <p><b>Astrofuel Facility</b></p> <p>CHESWICK, PA.</p> <p>TITLE BETA BACK SCATTER PROBE (SURFACE)</p> <p>CODE IDENT. NO. ED-SK-308079-C</p> <p>SCALE 1:1</p> <p>WT. ACT. WT. CALC.</p>	<p>CHANGE</p>