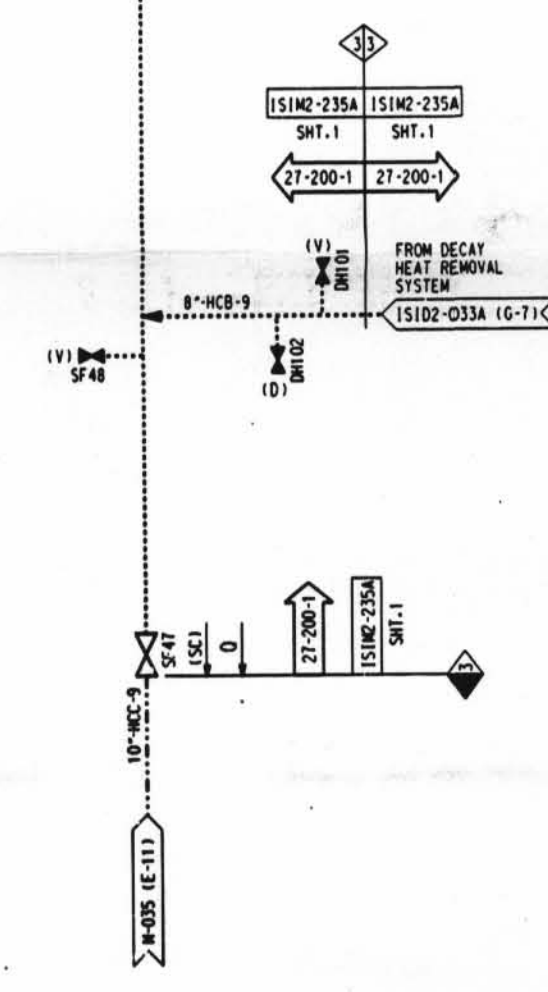


INFO. NOTE:
 (REMOVE AT NEXT UPDATE)
 REVISION CHANGE IN THE CLOUDED
 AREA WAS FOR COLORIZING THE
 SPENT FUEL POOL AS GREEN

- ISIM2- REFERENCE TO THE PIPING ISOMETRIC DRAWING FOR DETAILS ON THE PIPING CONFIGURATION, AND THE LOCATION AND IDENTIFICATION OF WELDS AND SUPPORTS.
- RESERVED FOR SPECIAL ISI REQUIREMENTS. (MAY BE) ACCOMPANIED BY SPECIFIC NOTES.
- REFERENCE TO THE ISI ITEM NUMBER DESIGNATION USED IN THE FIRST YEAR INSERVICE INSPECTION INTERVAL.
- ASME SECTION XI CLASS CHANGE
- ISI PROGRAM BOUNDARY

- NOTES:
1. DELETED
 2. FOR ISI BOUNDARY DIAGRAM INDEX SHEET AND GENERAL NOTES. SEE IS102-001.
 3. FOR PIPING SYMBOLS AND P & B ID INDEX. SEE DRAWING M-001.
 4. UNLESS OTHERWISE NOTED, ALL VENT CONNECTIONS ARE 1/2" AND DRAIN CONNECTIONS ARE 1". LINE IDENTIFICATION IS THE SAME AS THE HEADER.



D-26

1	INC DCN IS102-35-4 PER DCR 01-1685	SBV	
2	INC DCN IS102-35-2 PER DCR 00-1786		"INITIALS ON FILE"
3	INC DCN IS102-35-1 FOR DCR 91-001		"INITIALS ON FILE"
4	ISSUED FOR SECOND TO YEAR ISI PROGRAM		"INITIALS ON FILE"
REV.	DATE	REVISIONS	BY
DATE	DESIGNED BY	DATE	BY
DAVIS-BESSE NUCLEAR POWER STATION UNIT NO. 1			
INSERVICE INSPECTION DIAGRAM SPENT FUEL POOL COOLING SYSTEM			
IS102-035			5