

LEGEND

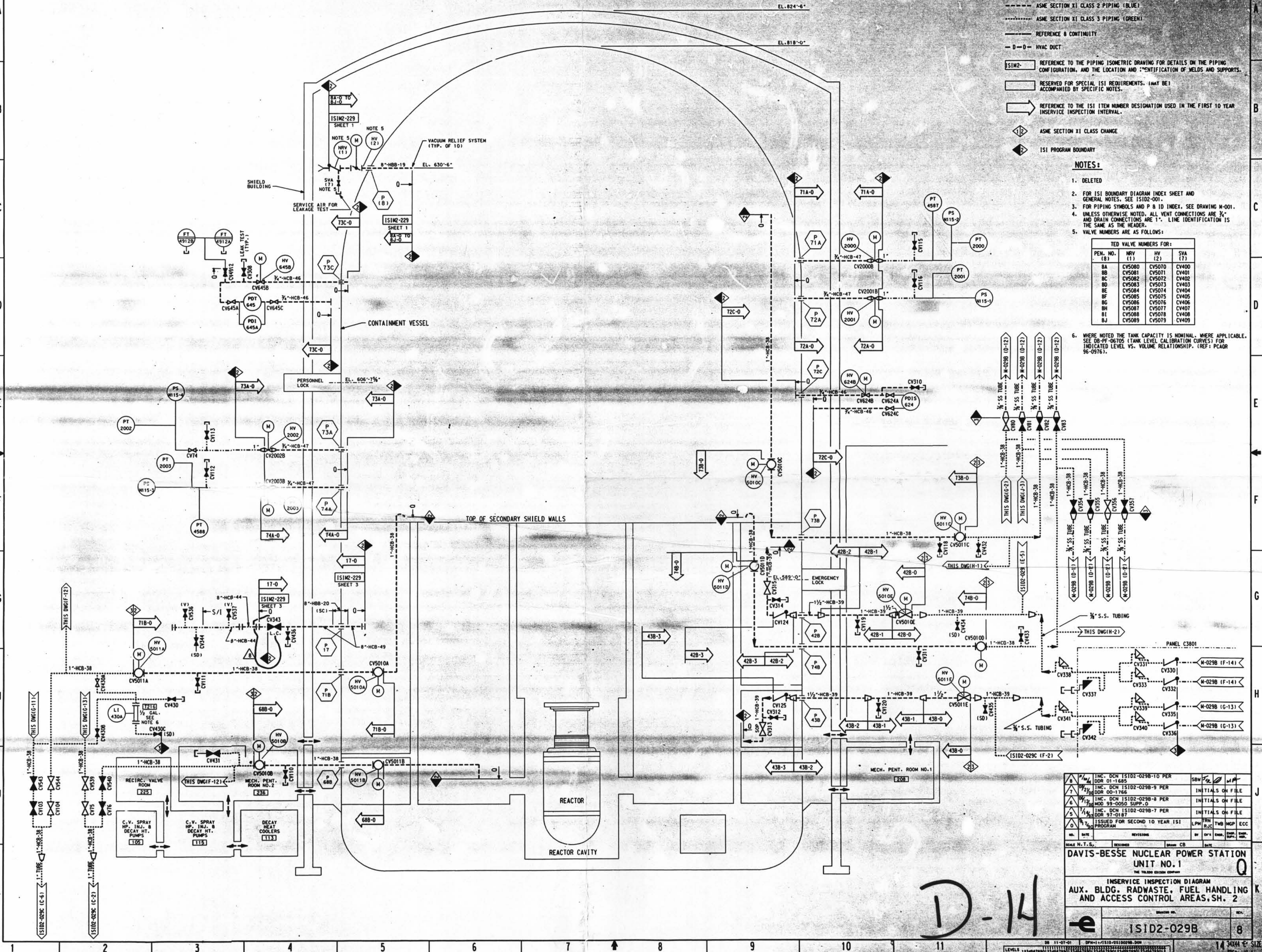
- ASME SECTION XI CLASS 1 PIPING (RED)
- ASME SECTION XI CLASS 2 PIPING (BLUE)
- ASME SECTION XI CLASS 3 PIPING (GREEN)
- REFERENCE & CONTINUITY
- 0 - 0 - HVAC DUCT
- ISIM2- REFERENCE TO THE PIPING ISOMETRIC DRAWING FOR DETAILS ON THE PIPING CONFIGURATION, AND THE LOCATION AND IDENTIFICATION OF WELDS AND SUPPORTS.
- RESERVED FOR SPECIAL ISI REQUIREMENTS. (MAY BE) ACCOMPANIED BY SPECIFIC NOTES.
- REFERENCE TO THE ISI ITEM NUMBER DESIGNATION USED IN THE FIRST 10 YEAR INSERVICE INSPECTION INTERVAL.
- ASME SECTION XI CLASS CHANGE
- ISI PROGRAM BOUNDARY

NOTES:

1. DELETED
2. FOR ISI BOUNDARY DIAGRAM INDEX SHEET AND GENERAL NOTES, SEE IS102-001.
3. FOR PIPING SYMBOLS AND P & ID INDEX, SEE DRAWING M-001.
4. UNLESS OTHERWISE NOTED, ALL VENT CONNECTIONS ARE 3/4" AND DRAIN CONNECTIONS ARE 1". LINE IDENTIFICATION IS THE SAME AS THE HEADER.
5. VALVE NUMBERS ARE AS FOLLOWS:

TED VALVE NUMBERS FOR:			
PEN. NO.	MV (1)	MV (2)	SVA (7)
8A	CV5080	CV5070	CV4000
8B	CV5081	CV5071	CV4001
8C	CV5082	CV5072	CV4002
8D	CV5083	CV5073	CV4003
8E	CV5084	CV5074	CV4004
8F	CV5085	CV5075	CV4005
8G	CV5086	CV5076	CV4006
8H	CV5087	CV5077	CV4007
8I	CV5088	CV5078	CV4008
8J	CV5089	CV5079	CV4009

6. WHERE NOTED THE TANK CAPACITY IS NOMINAL, WHERE APPLICABLE, SEE DB-PF-06705 (TANK LEVEL CALIBRATION CURVES) FOR INDICATED LEVEL VS. VOLUME RELATIONSHIP. (REF: PCAOR 96-0976).



INC. DCN IS102-029B-10 PER DOR 01-1685	REV	INITIALS ON FILE
INC. DCN IS102-029B-9 PER DOR 00-1768	REV	INITIALS ON FILE
INC. DCN IS102-029B-8 PER MOD 99-0050 SUPP. 0	REV	INITIALS ON FILE
INC. DCN IS102-029B-7 PER DOR 97-0187	REV	INITIALS ON FILE
ISSUED FOR SECOND 10 YEAR ISI PROGRAM	REV	INITIALS ON FILE

SCALE N.T.S. DESIGNED BY [ ] DRAWN BY [ ] DATE [ ]

**DAVIS-BESSE NUCLEAR POWER STATION UNIT NO. 1**

INSERVICE INSPECTION DIAGRAM  
AUX. BLDG. RADWASTE, FUEL HANDLING AND ACCESS CONTROL AREAS, SH. 2

ISID2-029B 8

D-14