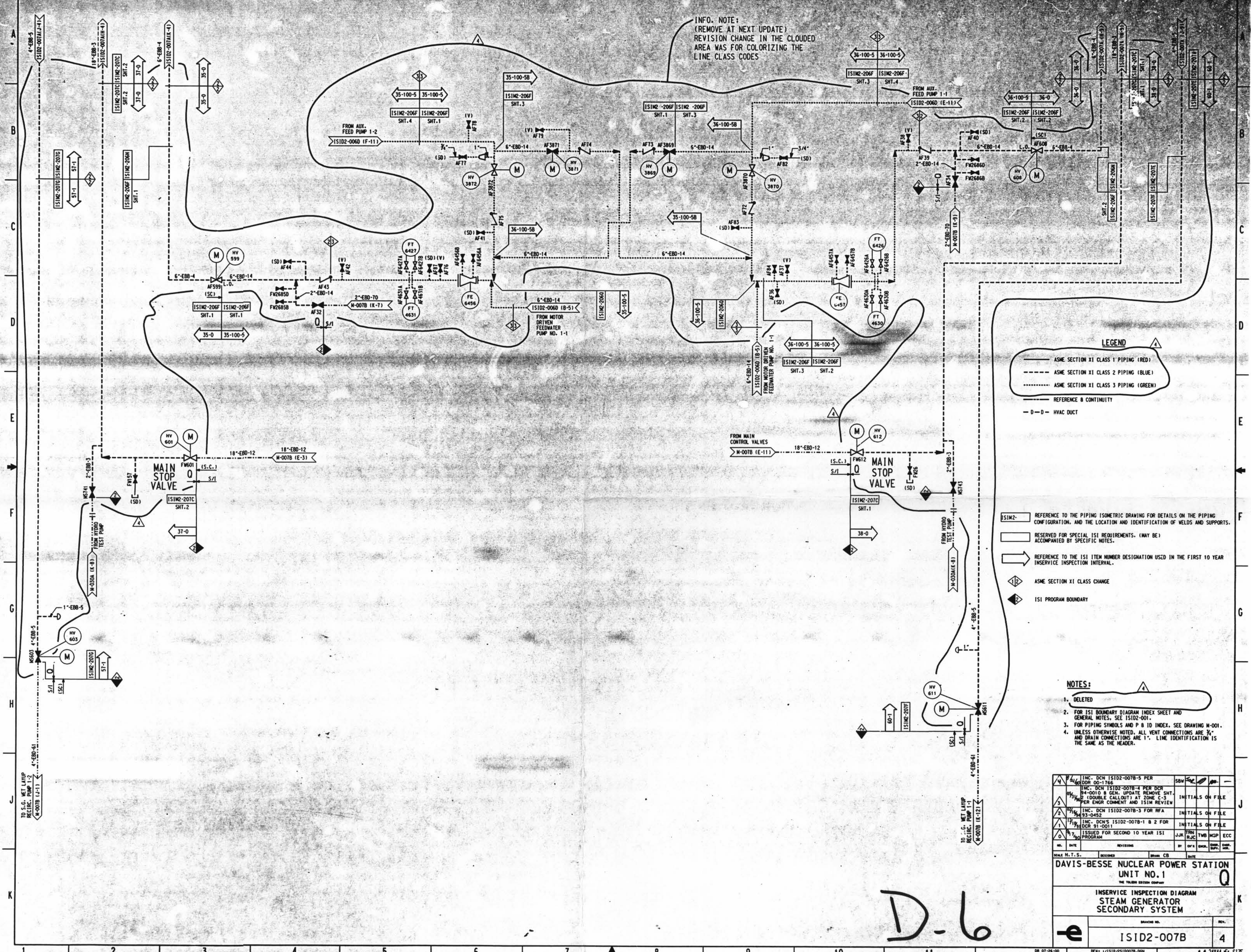


INFO. NOTE:
(REMOVE AT NEXT UPDATE)
REVISION CHANGE IN THE CLOUDED
AREA WAS FOR COLORIZING THE
LINE CLASS CODES



LEGEND

- ASME SECTION XI CLASS 1 PIPING (RED)
- ASME SECTION XI CLASS 2 PIPING (BLUE)
- ASME SECTION XI CLASS 3 PIPING (GREEN)
- REFERENCE & CONTINUITY
- HYAC DUCT

- IS1M2- REFERENCE TO THE PIPING ISOMETRIC DRAWING FOR DETAILS ON THE PIPING CONFIGURATION, AND THE LOCATION AND IDENTIFICATION OF WELDS AND SUPPORTS.
- RESERVED FOR SPECIAL ISI REQUIREMENTS. (MAY BE) ACCOMPANIED BY SPECIFIC NOTES.
- REFERENCE TO THE ISI ITEM NUMBER DESIGNATION USED IN THE FIRST 10 YEAR INSERVICE INSPECTION INTERVAL.
- ASME SECTION XI CLASS CHANGE
- ISI PROGRAM BOUNDARY

- NOTES:**
- DELETED
 - FOR ISI BOUNDARY DIAGRAM INDEX SHEET AND GENERAL NOTES, SEE IS1D2-001.
 - FOR PIPING SYMBOLS AND P & ID INDEX, SEE DRAWING M-001.
 - UNLESS OTHERWISE NOTED, ALL VENT CONNECTIONS ARE 3/4" AND DRAIN CONNECTIONS ARE 1". LINE IDENTIFICATION IS THE SAME AS THE HEADER.

| | | | |
|---|----------|---------|------|
| INC. DCN IS1D2-007B-5 PER DCR 00-1766 | SBW | FOR | --- |
| INC. DCN IS1D2-007B-4 PER DCR 98-0010 & GEN. UPDATE REMOVE SHT. 2 (DOUBLE CALLOUT AT ZONE C-3) PER ENGR COMMENT AND IS1M REVIEW | INITIALS | ON FILE | |
| INC. DCN IS1D2-007B-3 FOR RFA | INITIALS | ON FILE | |
| INC. DCN'S IS1D2-007B-1 & 2 FOR DCR 91-001 | INITIALS | ON FILE | |
| ISSUED FOR SECOND 10 YEAR ISI PROGRAM | JJK | TMB | MCP |
| REV. DATE | BY | CHK'D | DATE |
| SCALE N.T.S. DESIGNED: [] DRAWN: CB | | | |
| DAVIS-BESSE NUCLEAR POWER STATION UNIT NO. 1 | | | |
| INSERVICE INSPECTION DIAGRAM STEAM GENERATOR SECONDARY SYSTEM | | | |
| DRAWING NO. | | REV. | |
| IS1D2-007B | | 4 | |

D-6