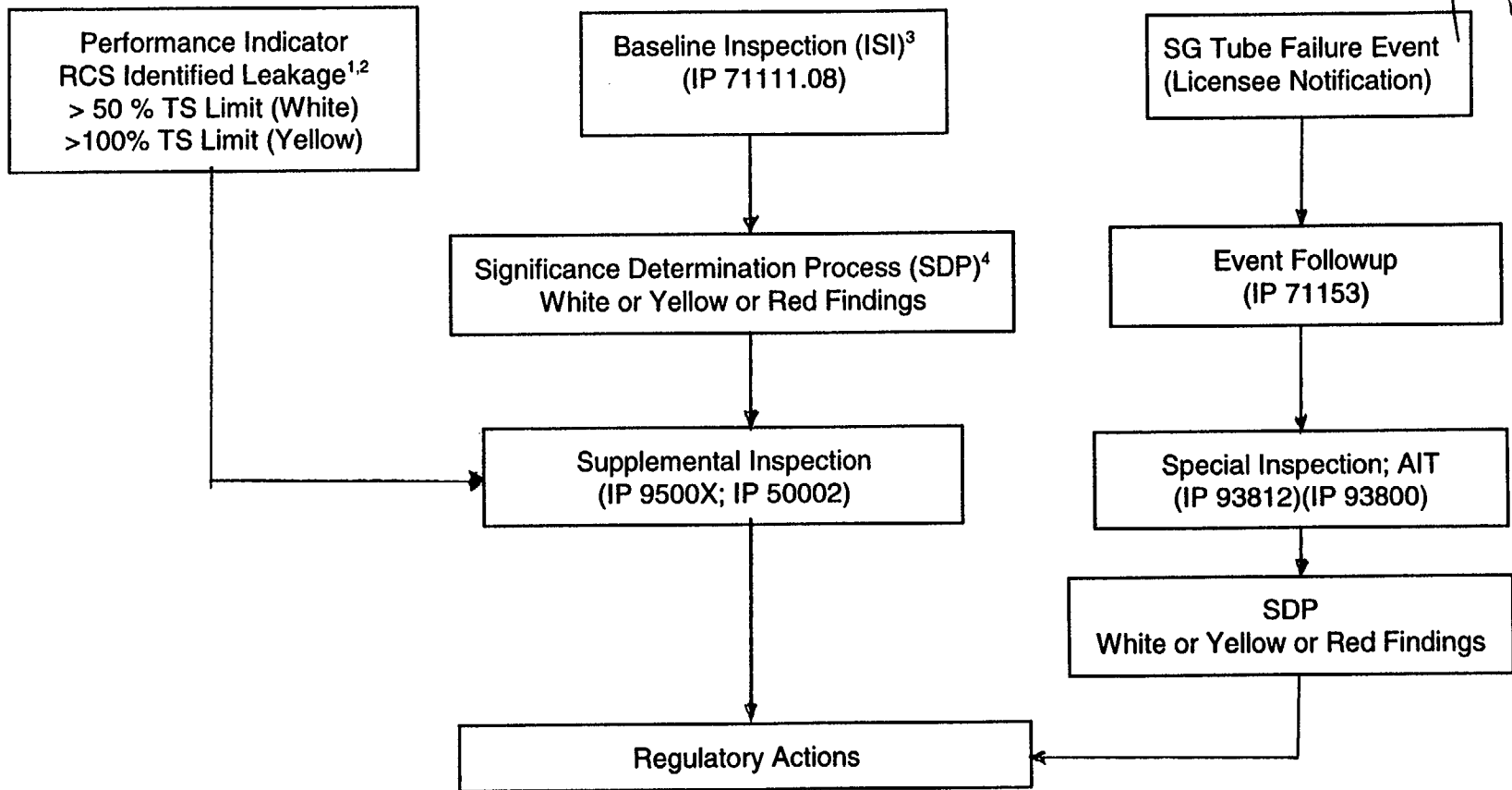


TREATMENT OF SG ISSUES IN THE ROP



16/9

Notes:

1. Thresholds for RCS leakage PI too high (gpm vs.gpd) for assessing SG tube conditions.
2. Up to 3 months may elapse before PI data is available.
3. No specifics in ISI procedure on PWR selection, inspection requirements for SGs, acceptance criteria, etc.
4. Additional guidance may be needed for handling ISI findings in SDP.