



LEGEND

- ASME SECTION XI CLASS 1 PIPING
- - - ASME SECTION XI CLASS 2 PIPING
- ASME SECTION XI CLASS 3 PIPING
- NON-ISI NUCLEAR CLASS AND HSC CLASS
- PRESSURE BOUNDARY EXTENSION
- - - REFERENCE & CONTINUITY
- D - D HVAC DUCT
- A ANCHOR
- CS CONSTANT SPRING HANGER
- VS VARIABLE SPRING HANGER
- HS HYDRAULIC SNUBBER
- MS MECHANICAL SNUBBER
- N NON-WELDED SUPPORT ATTACHMENT
- W WELDED INTEGRAL SUPPORT ATTACHMENT
- R RIGID SUPPORT
- T SWAY STRUT
- SW SHOP WELD
- FW FIELD WELD
- LW LONGITUDINAL WELD
- WOL WELDLET
- ISI ITEM NUMBER DESIGNATION USED IN THE FIRST 10 YEAR INSERVICE INSPECTION INTERVAL.

NOTES:

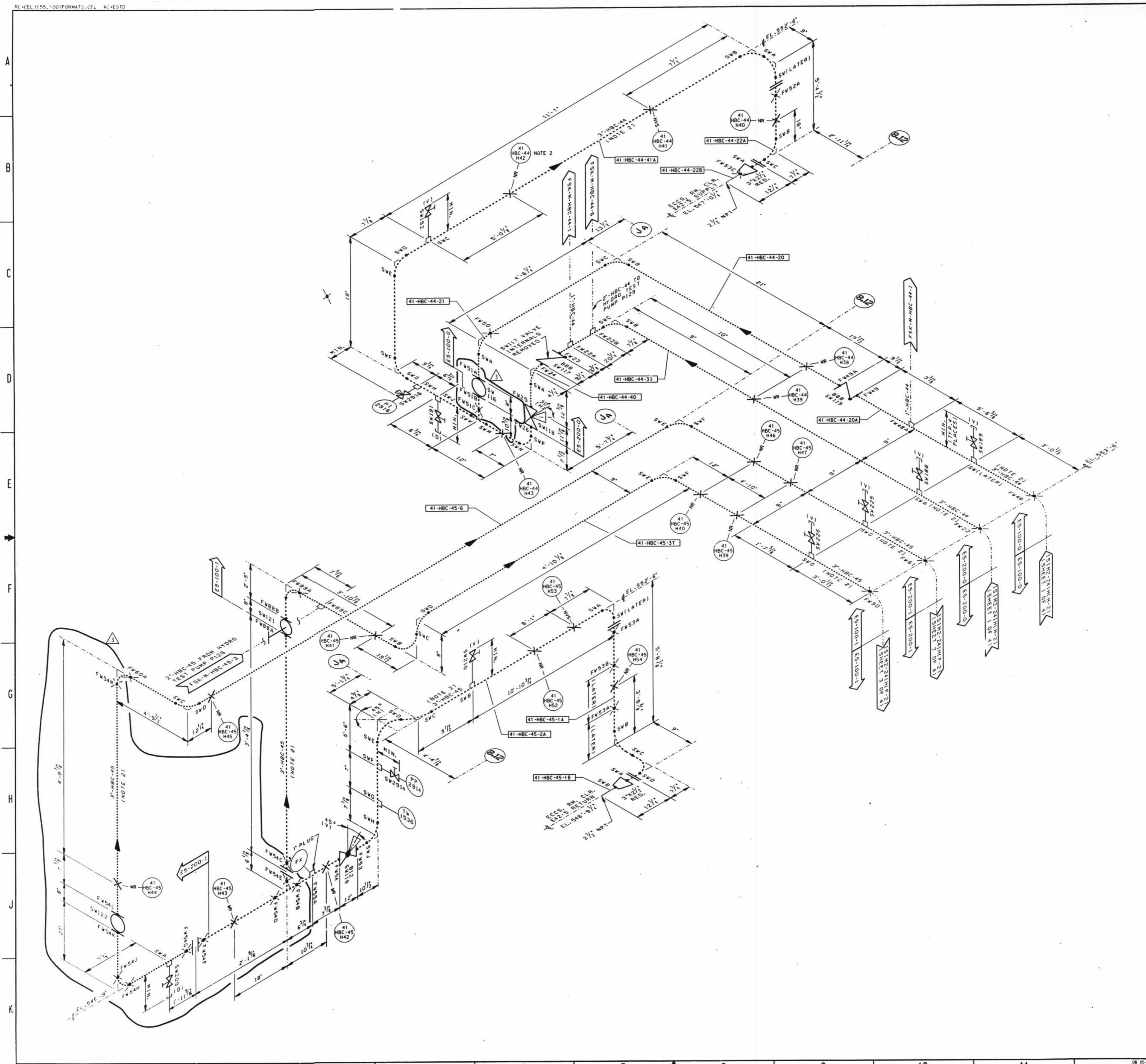
1. MULTIPLE SWAY STRUTS, SPRING SUPPORTS OR SNUBBERS IN A SINGLE PIPING SUPPORT ARE SHOWN BY A NUMBER BEFORE THE SUPPORT TYPE. (EXAMPLE: 2MS - TWO HYDRAULIC TYPE SNUBBERS THAT ARE NOT WELDED INTEGRAL TO THE PIPE).
2. THE SERVICE WATER LINE 3"-HBC-44 & 3"-HBC-45 WELDS AND SUPPORTS ARE EXEMPT FROM INSERVICE EXAMINATION REQUIREMENTS PER 100.1220. THE WELDS AND SUPPORTS SHOWN MAY NOT REPRESENT THE ACTUAL AS-BUILT CONDITION.

GENERAL NOTE:

DIMENSIONS SHOWN ON THIS DRAWING ARE TO BE USED FOR APPROXIMATE LOCATION ONLY. USE DESIGN DRAWINGS FOR DIMENSIONAL VERIFICATION.

REFERENCE DRAWINGS:

15102-0418 PRIMARY SERVICE WATER SYSTEM



D-143

3	4/16	INC. DCN'S 151M2-241H-41 & 46 PER MOD 97-0003 SUPP.O	JOR	10/11/97	
3	5/16	INC. DCN'S 151M2-241H-31 PER FFR 95-0869-908 & 151M2-241H-36 PER FFR 95-0869-911			INITIALS ON FILE
3	5/16	INC. DCN 151M2-241H-5 FOR DCN 97-0001			INITIALS ON FILE
3	5/16	ISSUED FOR SECOND TO YEAR ISI PROGRAM			INITIALS ON FILE
NO.	DATE	REVISION	BY	CHKD BY	APP'D BY
SCALE	N.T.S.	DESIGNED		DRWING	CB
DAVIS-BESSE NUCLEAR POWER STATION					
UNIT NO. 1					
THE TULSA Edison COMPANY					
INSERVICE INSPECTION ISOMETRIC SERVICE WATER SYSTEM ECCS ROOM COOLERS SUPPLY & RETURN					
DRAWING NO.				REV.	
151M2-241H				3	
SHEET 2				SHEET 3	

7-11-00 Lisa Bowring 30X