

LEGEND

- ASME SECTION XI CLASS 1 PIPING
- ASME SECTION XI CLASS 2 PIPING
- ASME SECTION XI CLASS 3 PIPING
- NON-151 NUCLEAR CLASS AND HSC CLASS
- PRESSURE BOUNDARY EXTENSION
- REFERENCE B CONTINUITY
- D-D- HVAC DUCT
- A ANCHOR
- CS CONSTANT SPRING HANGER
- VS VARIABLE SPRING HANGER
- HS HYDRAULIC SNUBBER
- MS MECHANICAL SNUBBER
- N NON-WELDED SUPPORT ATTACHMENT
- W WELDED INTEGRAL SUPPORT ATTACHMENT
- R RIGID SUPPORT
- T SWAY STRUT
- SW SHOP WELD
- FW FIELD WELD
- LW LONGITUDINAL WELD
- WOL WELDLET
- 151 ITEM NUMBER DESIGNATION USED IN THE FIRST 10 YEAR INSERVICE INSPECTION INTERVAL.

NOTES:

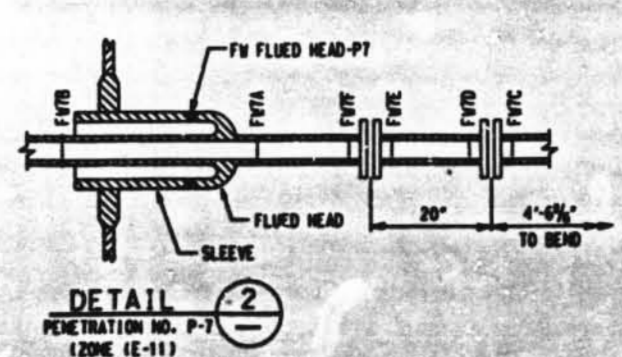
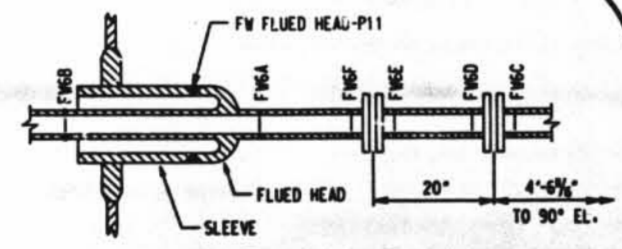
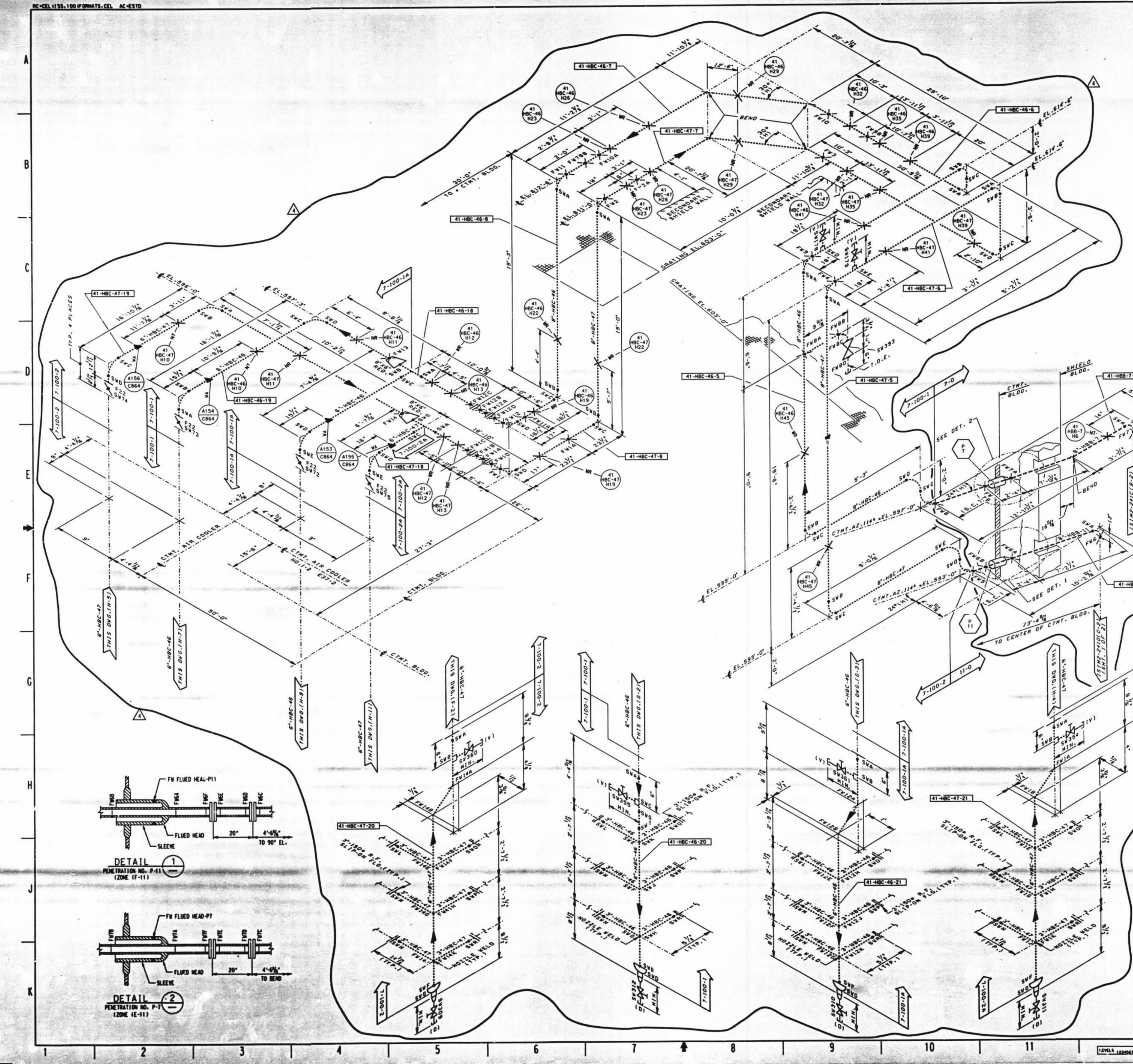
1. MULTIPLE SWAY STRUTS, SPRING SUPPORTS OR SNUBBERS IN A SINGLE PIPING SUPPORT ARE SHOWN BY A NUMBER BEFORE THE SUPPORT TYPE. EXAMPLE: 2MS - TWO HYDRAULIC TYPE SNUBBERS THAT ARE NOT WELDED INTEGRAL TO THE PIPE.
2. THE SERVICE WATER LINE 8" HBB-7 WELDS ARE EXEMPT FROM INSERVICE EXAMINATION REQUIREMENTS PER IVC 1220. THE WELDS SHOWN MAY NOT REPRESENT THE ACTUAL AS-BUILT CONDITION. THE HBB-7 SUPPORTS ARE ALSO EXEMPT FROM INSERVICE EXAMINATION REQUIREMENTS PER IVC 1220. HOWEVER, THE HBB-7 SUPPORTS HAVE BEEN INCLUDED IN THE TOTAL HANGER POPULATION AND ARE SUBJECT TO EXAMINATION.

GENERAL NOTE:

DIMENSIONS SHOWN ON THIS DRAWING ARE TO BE USED FOR APPROXIMATE LOCATION ONLY. USE DESIGN DRAWINGS FOR DIMENSIONAL VERIFICATION.

REFERENCE DRAWINGS:

15102-041C SERVICE WATER SYSTEM FOR CONTAINMENT AIR COOLERS



NO.	DATE	REVISION	BY	CHKD	APP'D
1	11-18-89	ISSUED FOR SECOND 10 YEAR ISI PROGRAM
2	11-18-89	FOR MOD 91-0022 SUPP. D
3	11-18-89	FOR MOD 91-0022 SUPP. D
4	11-18-89	FOR MOD 91-0022 SUPP. D

SCALE: N.T.S. DESIGNED: DRAWN: DATE:

**DAVIS-BESSE NUCLEAR POWER STATION
UNIT NO. 1**

INSERVICE INSPECTION ISOMETRIC
SERVICE WATER SYSTEM
CONT. AIR COOLER 1-2

151M2-241F 4

D-140