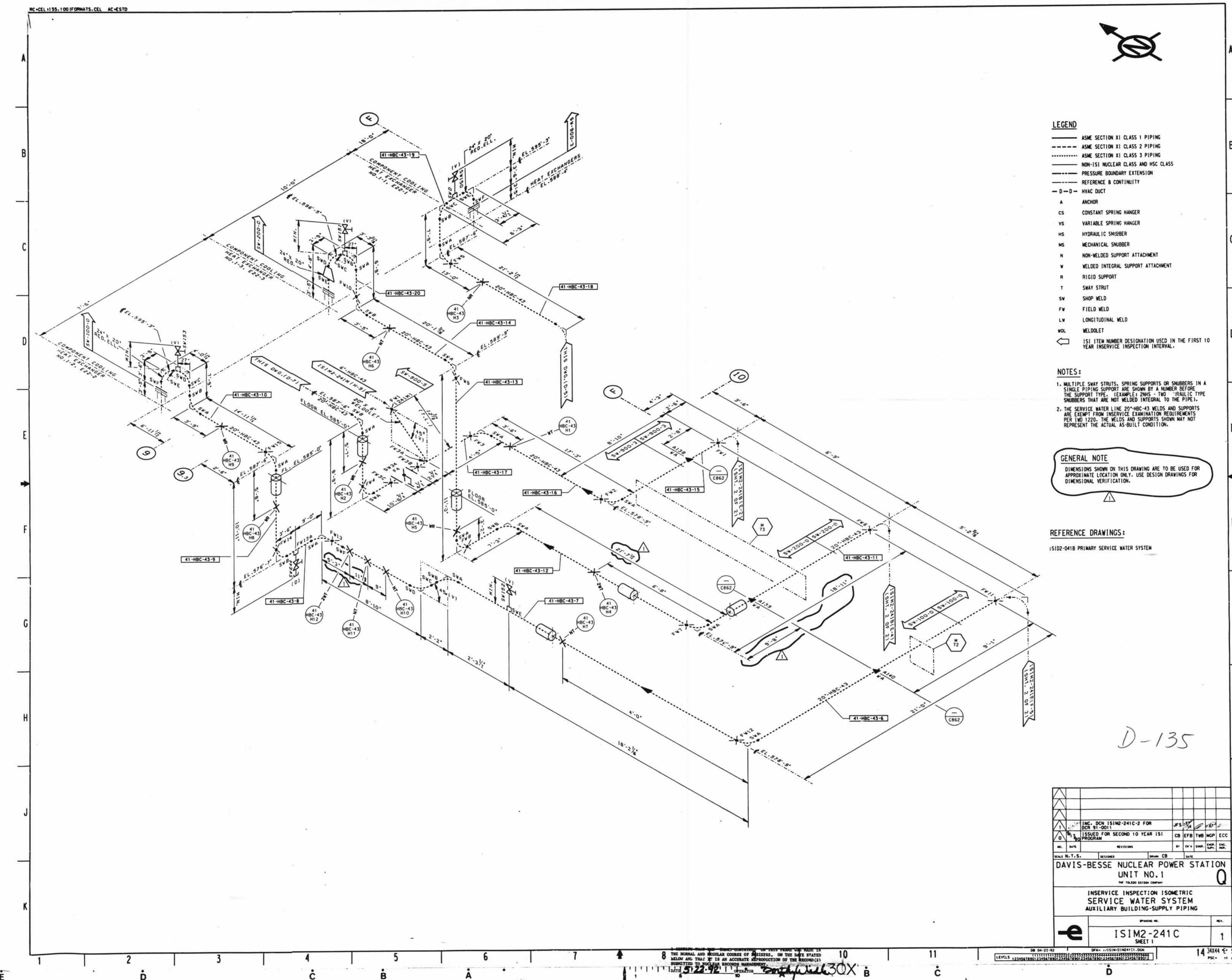


XC-CEL 1155.100 FORMATS.CEL AC-45TD



- LEGEND**
- ASME SECTION XI CLASS 1 PIPING
 - - - ASME SECTION XI CLASS 2 PIPING
 - ASME SECTION XI CLASS 3 PIPING
 - NON-ISI NUCLEAR CLASS AND HSC CLASS
 - PRESSURE BOUNDARY EXTENSION
 - REFERENCE B CONTINUITY
 - D - D - HVAC DUCT
 - A ANCHOR
 - CS CONSTANT SPRING HANGER
 - VS VARIABLE SPRING HANGER
 - HS HYDRAULIC SMOOTHER
 - MS MECHANICAL SMOOTHER
 - N NON-WELDED SUPPORT ATTACHMENT
 - W WELDED INTEGRAL SUPPORT ATTACHMENT
 - R RIGID SUPPORT
 - T SWAY STRUT
 - SW SHOP WELD
 - FW FIELD WELD
 - LW LONGITUDINAL WELD
 - WOL WELDLET
 - 10 ISI ITEM NUMBER DESIGNATION USED IN THE FIRST 10 YEAR INSERVICE INSPECTION INTERVAL.

- NOTES:**
- MULTIPLE SWAY STRUTS, SPRING SUPPORTS OR SMOOTHERS IN A SINGLE PIPING SUPPORT ARE SHOWN BY A NUMBER BEFORE THE SUPPORT TYPE. (EXAMPLES: 2MS - TWO MECHANICAL SMOOTHERS THAT ARE NOT WELDED INTEGRAL TO THE PIPE).
 - THE SERVICE WATER LINE 20-HBC-43 WELDS AND SUPPORTS ARE EXEMPT FROM INSERVICE EXAMINATION REQUIREMENTS PER 10.100. THE WELDS AND SUPPORTS SHOWN MAY NOT REPRESENT THE ACTUAL AS-BUILT CONDITION.

GENERAL NOTE

DIMENSIONS SHOWN ON THIS DRAWING ARE TO BE USED FOR APPROXIMATE LOCATION ONLY. USE DESIGN DRAWINGS FOR DIMENSIONAL VERIFICATION.

REFERENCE DRAWINGS:

IS102-0418 PRIMARY SERVICE WATER SYSTEM

D-135

DESIGNER	ISSUED FOR SECOND 10 YEAR ISI PROGRAM	DATE	SCALE	PROJECT
INCH DWN IS1M2-241C-2 FOR DEC 93 1001	JFS	05/94	AS SHOWN	DAVIS-BESSE NUCLEAR POWER STATION UNIT NO. 1
PROJECT	REVISION	DATE	BY	DESCRIPTION
IS1M2-241C	1			