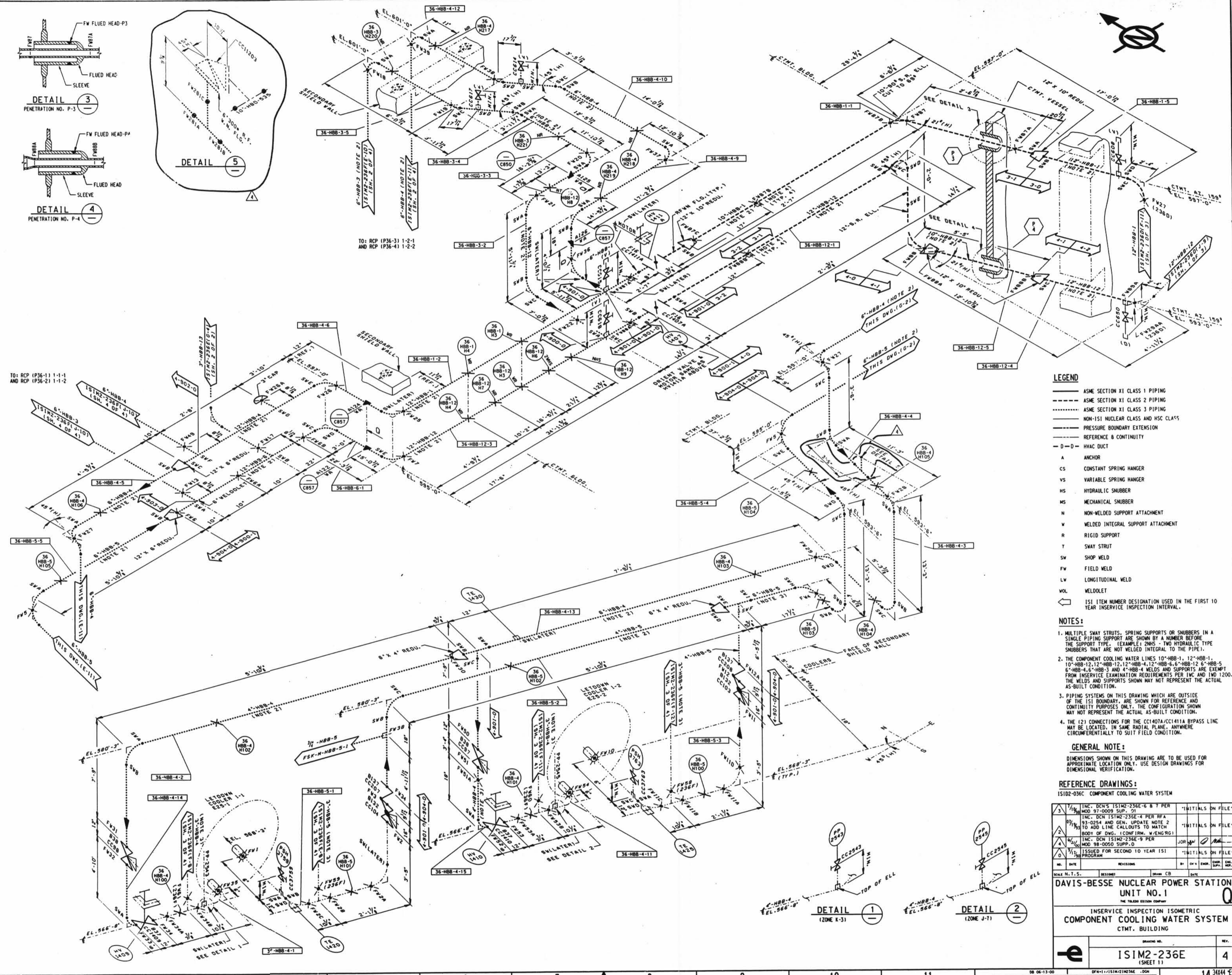


TO: RCP (P36-11) 1-1-1 AND RCP (P36-21) 1-1-2

TO: RCP (P36-31) 1-2-1 AND RCP (P36-41) 1-2-2



- LEGEND**
- ASME SECTION XI CLASS 1 PIPING
 - - - ASME SECTION XI CLASS 2 PIPING
 - ASME SECTION XI CLASS 3 PIPING
 - NON-ISI NUCLEAR CLASS AND HSC CLASS
 - PRESSURE BOUNDARY EXTENSION
 - REFERENCE & CONTINUITY
 - D-D HVAC DUCT
 - A ANCHOR
 - CS CONSTANT SPRING HANGER
 - VS VARIABLE SPRING HANGER
 - HS HYDRAULIC SHUBBER
 - MS MECHANICAL SHUBBER
 - N NON-WELDED SUPPORT ATTACHMENT
 - W WELDED INTEGRAL SUPPORT ATTACHMENT
 - R RIGID SUPPORT
 - T SWAY STRUT
 - SW SHOP WELD
 - FW FIELD WELD
 - LW LONGITUDINAL WELD
 - WOL WELDOLET
 - IS1 ITEM NUMBER DESIGNATION USED IN THE FIRST 10 YEAR INSERVICE INSPECTION INTERVAL.

- NOTES:**
1. MULTIPLE SWAY STRUTS, SPRING SUPPORTS OR SHUBBERS IN A SINGLE PIPING SUPPORT ARE SHOWN BY A NUMBER BEFORE THE SUPPORT TYPE. (EXAMPLE: 2MS - TWO HYDRAULIC TYPE SHUBBERS THAT ARE NOT WELDED INTEGRAL TO THE PIPE).
 2. THE COMPONENT COOLING WATER LINES 10\"/>

GENERAL NOTE:
DIMENSIONS SHOWN ON THIS DRAWING ARE TO BE USED FOR APPROXIMATE LOCATION ONLY. USE DESIGN DRAWINGS FOR DIMENSIONAL VERIFICATION.

REFERENCE DRAWINGS:
IS102-030C COMPONENT COOLING WATER SYSTEM

1	INC. DCS'S IS102-236E-6 & 7 PER MOD 97-0009 SUPP. 01	INITIALS ON FILE
2	INC. DCS'S IS102-236E-4 PER RFA 93-0254 AND GEN. UPDATE NOTE 2 TO ADD LINE CALCULATIONS TO MATCH BODY OF DWG. (CONFIRM. W/ENGRS)	INITIALS ON FILE
3	INC. DCS'S IS102-236E-9 PER MOD 98-0050 SUPP. 0	JOR/MP
4	ISSUED FOR SECOND TO YEAR ISI PROGRAM	INITIALS ON FILE

DATE N.T.S. DESIGNED BY: CB DATE

DAVIS-BESSE NUCLEAR POWER STATION UNIT NO. 1

THE TRUSS DESIGN COMPANY

INSERVICE INSPECTION ISOMETRIC COMPONENT COOLING WATER SYSTEM CTMT. BUILDING

PROJECT NO. ISIM2-236E (SHEET 1)

REV. 4



7-11-00 Lisa Bourne 30x

D-117