

DCS MS-016

APR 25 1984

Docket Nos. 50-335
and 50-389

DISTRIBUTION:
 ✓ Docket File WJones
 NRC PDR DBrinkman
 Local PDR WJones
 ORB#3 Rdg ACRS (10)
 DEisenhut RDiggs
 PMKreutzer RFerguson
 OELD RBallard
 SECY
 LHarmon
 EJordan
 JNGrace
 TBarnhart (8)

Mr. J. W. Williams, Jr.
 Vice President
 Nuclear Energy Department
 Florida Power & Light Company
 Juno Beach, Florida 33408

Dear Mr. Williams:

On February 24, 1984, the Commission issued Amendment Nos. 62 and 5 to Facility Operating License Nos. DPR-67 and NPF-16 for the St. Lucie Plant, Unit Nos. 1 and 2. The amendments consisted of changes to the Technical Specifications in response to your application dated October 12, 1983. The TS changes consisted of title changes concerning the Nuclear Plant Supervisor and Assistant Nuclear Plant Supervisor of figure 6.2-2 for both units, a revision dealing with the function of the Shift Technical Advisor for Unit 2, and deletion of a footnote that applied to Unit 1 prior to Unit 2 operating license issuance.

On Figure 6.2-2 attached to Amendment No. 62 for St. Lucie 1, the old amendment number was inadvertently left on as a valid number and the new number was not added as is customary. The figure was otherwise correct as issued.

Enclosed is a copy of page 6-3 (with overleaf page) showing the correct amendment number. Please accept our apologies for any inconvenience this administrative error may have caused.

Sincerely,

Original signed by:

Donald E. Sells, Project Manager
 Operating Reactors Branch #3
 Division of Licensing

Enclosure:
 Corrected page 6-3 to
 Amendment No. 62 to
 DPR-67

cc w/enclosure
 See next page

ORB#3:DL
 PKreutzer:dd
 4/24/84

ORB#3:DL
 JRMiller
 4/25/84

~~OELD
 4/18/84~~

~~ADFOR:DL
 GCLainas
 4/18/84~~

DE Sells
 DE Sells
 4/24/84

8405160546 840425
 PDR ADOCK 05000335
 P PDR

Florida Power & Light Company

cc:

Harold F. Reis, Esquire
Newman & Holtzinger
1025 Connecticut Avenue, NW
Washington, DC 20036

Norman A. Coll, Esquire
McCarthy, Steel, Hector and Davis
14th Floor, First National Bank Building
Miami, Florida 33131

Administrator
Department of Environmental Regulation
Power Plant Siting Section
State of Florida
2600 Blair Stone Road
Tallahassee, Florida 32301

Mr. Weldon B. Lewis
County Administrator
St. Lucie County
2300 Virginia Avenue, Room 104
Fort Pierce, Florida 33450

U.S. Environmental Protection Agency
Region IV Office
ATTN: Regional Radiation Representative
345 Courtland Street, NE
Atlanta, Georgia 30308

Mr. Charles B. Brinkman
Manager - Washington Nuclear Operations
C-E Power Systems
Combustion Engineering, Inc.
7910 Woodmont Avenue
Bethesda, Maryland 20014

Regional Administrator
Nuclear Regulatory Commission
Region II
Office of Executive Director for Operations
101 Marietta Street, Suite 2900
Atlanta, Georgia 30303

Mr. Jack Schreve
Office of the Public Counsel
Room 4, Holland Building
Tallahassee, Florida 32304

Resident Inspector
c/o U.S. NRC
Senior Resident Inspector
7585 S. Hwy A1A
Jensen Beach, Florida 33457

State Planning & Development
Clearinghouse
Office of Planning & Budget
Executive Office of the Governor
The Capitol Building
Tallahassee, Florida 32301

8405160552 840425
 PDR ADDCK 05000335
 PDR

ST. LUCIE - UNIT 1

6-3

Amendment No. 27, 8/8, 62

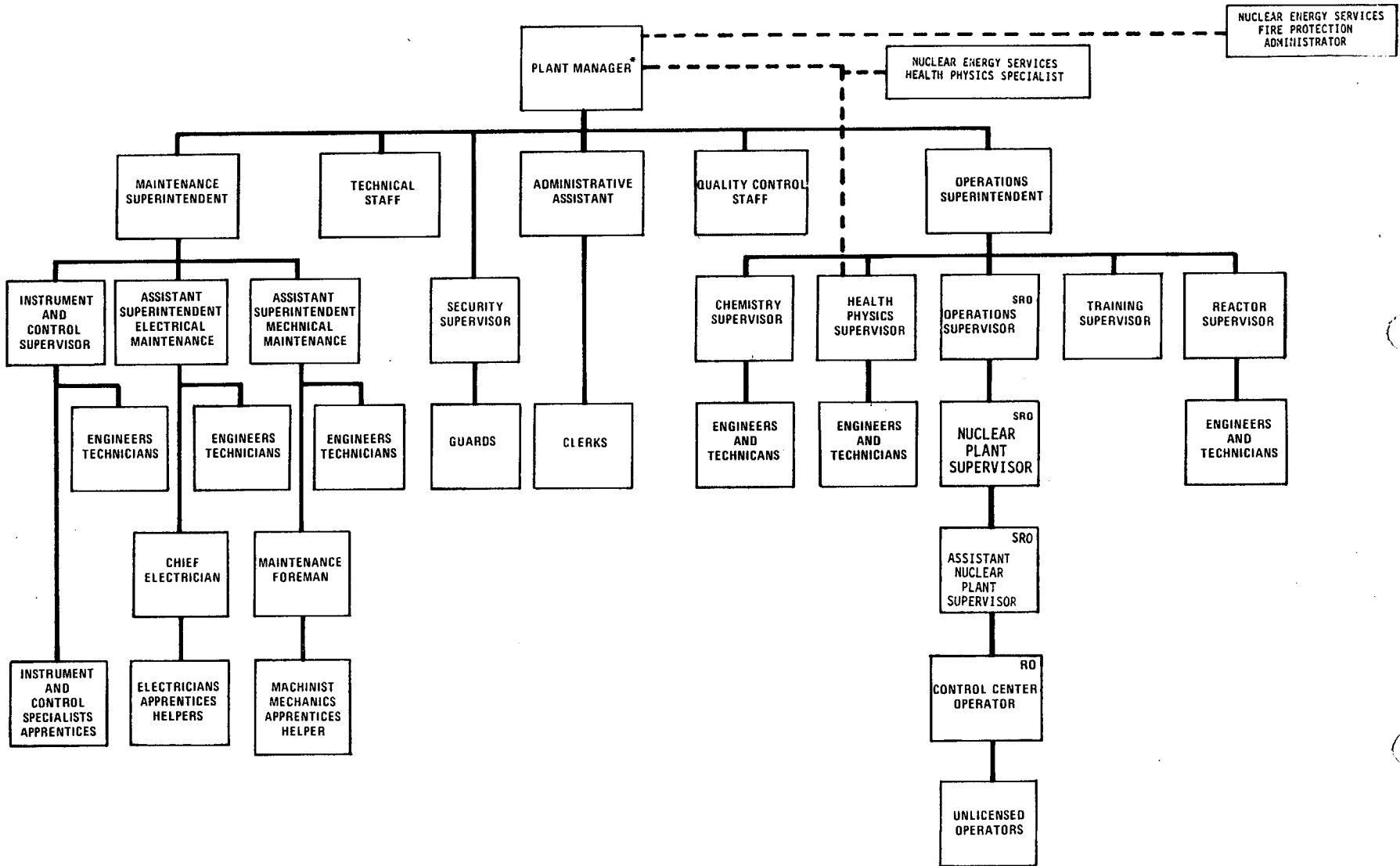


Figure 6.2-2 Unit Organization - St. Lucie Plant, Unit 1

Table 6.2-1

MINIMUM SHIFT CREW COMPOSITION[#]

WITH THE OTHER UNIT IN MODES 5 OR 6 OR DE-FUELED		
POSITION	NUMBER OF INDIVIDUALS REQUIRED TO FILL POSITION	
	MODES 1, 2, 3, & 4	MODES 5 & 6
SS (SRO)	1 ^a	1 ^a
SRO	1	None *
RO	2	1
AO	2	2 ^b
STA	1	None

WITH THE OTHER UNIT IN MODES 1, 2, 3, OR 4		
POSITION	NUMBER OF INDIVIDUALS REQUIRED TO FILL POSITION	
	MODES 1, 2, 3, & 4	MODES 5 & 6
SS (SRO)	1 ^a	1 ^a
SRO	1	None
RO	2	1
AO	2	1
STA	1 ^a	None

SS - Shift Supervisor

SRO - Licensed Senior Reactor Operator

STA - Shift Technical Advisor

RO - Licensed Reactor Operator

AO - Auxiliary Operator

* Does not include the licensed Senior Reactor Operator or Senior Reactor Operator Limited to Fuel Handling, supervising CORE ALTERATIONS after the initial fuel loading.

Shift crew composition may be less than the minimum requirements for a period of time not to exceed 2 hours in order to accommodate unexpected absence of on duty shift crew members provided immediate action is taken to restore the shift crew composition to within the minimum requirements of Table 6.2-1.

a/ Individual may fill the same position on the other unit.

b/ One of the two required individuals may fill the same position on the other unit.