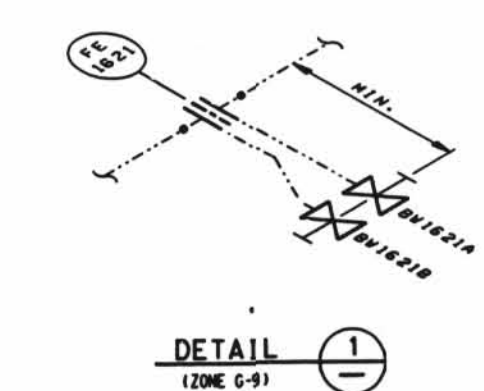


- LEGEND**
- ASME SECTION XI CLASS 1 PIPING
 - - - ASME SECTION XI CLASS 2 PIPING
 - ASME SECTION XI CLASS 3 PIPING
 - NON-ISI NUCLEAR CLASS AND HSC CLASS
 - PRESSURE BOUNDARY EXTENSION
 - REFERENCE & CONTINUITY
 - 0 - 0 - HVAC DUCT
 - A ANCHOR
 - CS CONSTANT SPRING HANGER
 - VS VARIABLE SPRING HANGER
 - HS HYDRAULIC SNUBBER
 - MS MECHANICAL SNUBBER
 - N NON-WELDED SUPPORT ATTACHMENT
 - W WELDED INTEGRAL SUPPORT ATTACHMENT
 - R RIGID SUPPORT
 - T SWAY STRUT
 - SW SHOP WELD
 - FW FIELD WELD
 - LW LONGITUDINAL WELD
 - WOL WELDLET
 - ISI ITEM NUMBER DESIGNATION USED IN THE FIRST 10 YEAR INSERVICE INSPECTION INTERVAL.

- NOTES:**
1. MULTIPLE SWAY STRUTS, SPRING SUPPORTS OR SNUBBERS IN A SINGLE PIPING SUPPORT ARE SHOWN BY A NUMBER BEFORE THE SUPPORT TYPE. (EXAMPLE: 2MS - TWO HYDRAULIC TYPE SNUBBERS THAT ARE NOT WELDED INTEGRAL TO THE PIPE).
 2. THE SPENT FUEL POOL COOLING LINE 3" HCB-36 WELDS AND SUPPORTS ARE EXEMPT FROM INSERVICE EXAMINATION REQUIREMENTS PER 10 CFR 50.109. THE WELDS AND SUPPORTS SHOWN MAY NOT REPRESENT THE ACTUAL AS-BUILT CONDITION.
 3. PIPING SYSTEMS ON THIS DRAWING WHICH ARE OUTSIDE OF THE ISI BOUNDARY, ARE SHOWN FOR REFERENCE AND CONTINUITY PURPOSES ONLY. THE CONFIGURATION SHOWN MAY NOT REPRESENT THE ACTUAL AS-BUILT CONDITION.

GENERAL NOTE:
DIMENSIONS SHOWN ON THIS DRAWING ARE TO BE USED FOR APPROXIMATE LOCATION ONLY. USE DESIGN DRAWINGS FOR DIMENSIONAL VERIFICATION.

- REFERENCE DRAWINGS:**
- IS102-033A HIGH PRESSURE INJECTION
 - IS102-033B DECAT HEAT TRAIN 1
 - IS102-035 SPENT FUEL POOL COOLING SYSTEM



D-105

INC. DEN IS1M2-235B-7 PER	INITIALS ON FILE
INC. DEN IS1M2-235B-6 FOR	INITIALS ON FILE
INC. DEN IS1M2-235B-5 FOR	INITIALS ON FILE
INC. DEN IS1M2-235B-9 PER	INITIALS ON FILE
ISSUES FOR SECOND 10 YEAR ISI PROGRAM	CB EPB LLC MDP ECC

DATE: _____ REVISION: _____ BY: _____

SCALE: N.T.S. DRAWN: CB DATE: _____

**DAVIS-BESSE NUCLEAR POWER STATION
UNIT NO. 1**

INSERVICE INSPECTION ISOMETRIC
SPENT FUEL POOL COOLING SYSTEM
AUXILIARY BUILDING AREA 8

IS1M2-235B
SHEET 1

I CERTIFY THAT THE WELDING MADE ON THIS DRAWING WAS MADE IN ACCORDANCE WITH THE WELDING CODES OF SERVICE ON THE DATE SHOWN BELOW AND THAT AN ACCURATE REPRODUCTION OF THE EQUIPMENT SHOWN IS IN THE RECORDS MAINTAINED AT DAVIS-BESSE.

DATE: 7/20/04 WELDER: [Signature]

30X

14 3044 C SIZE