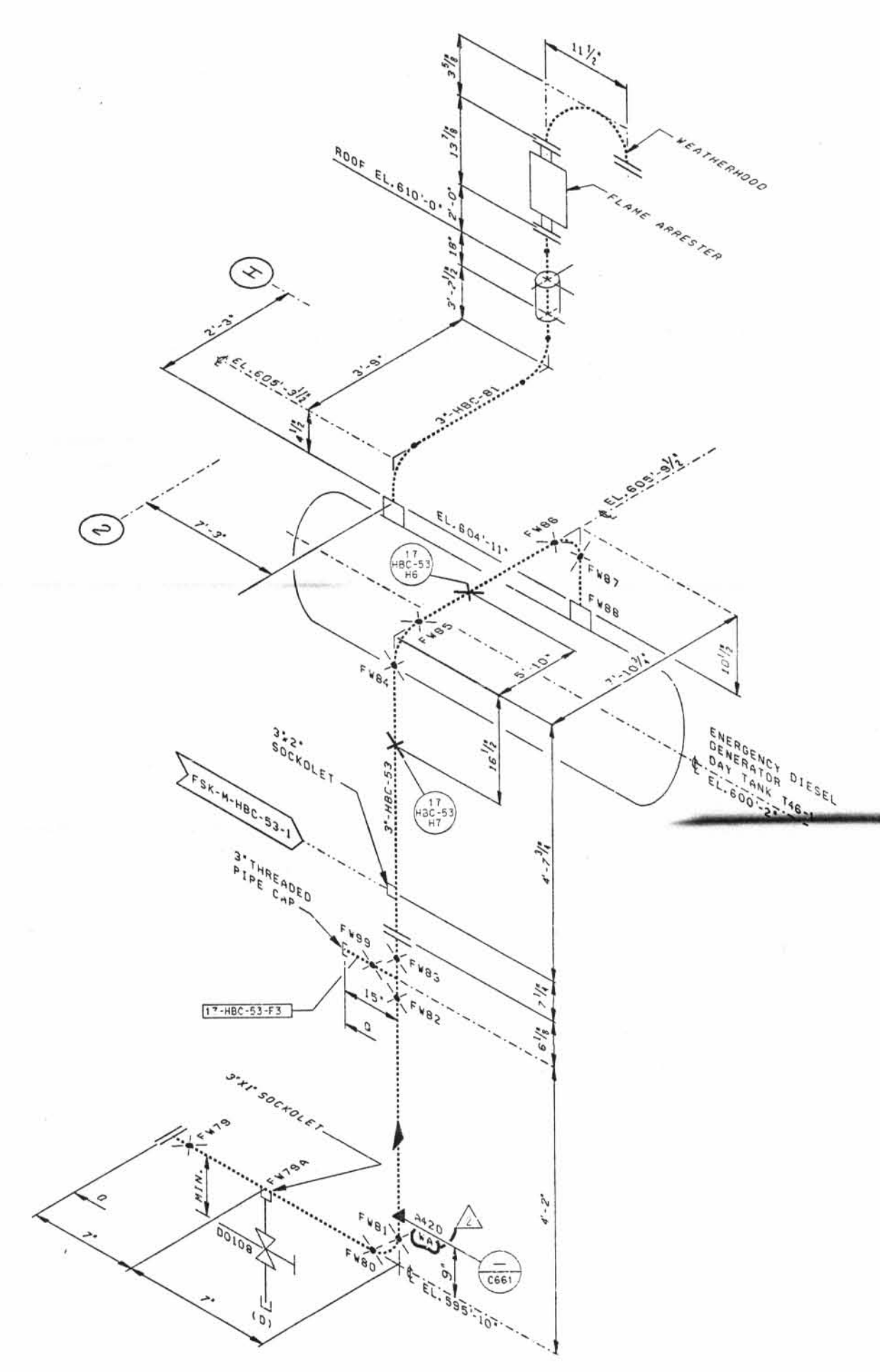
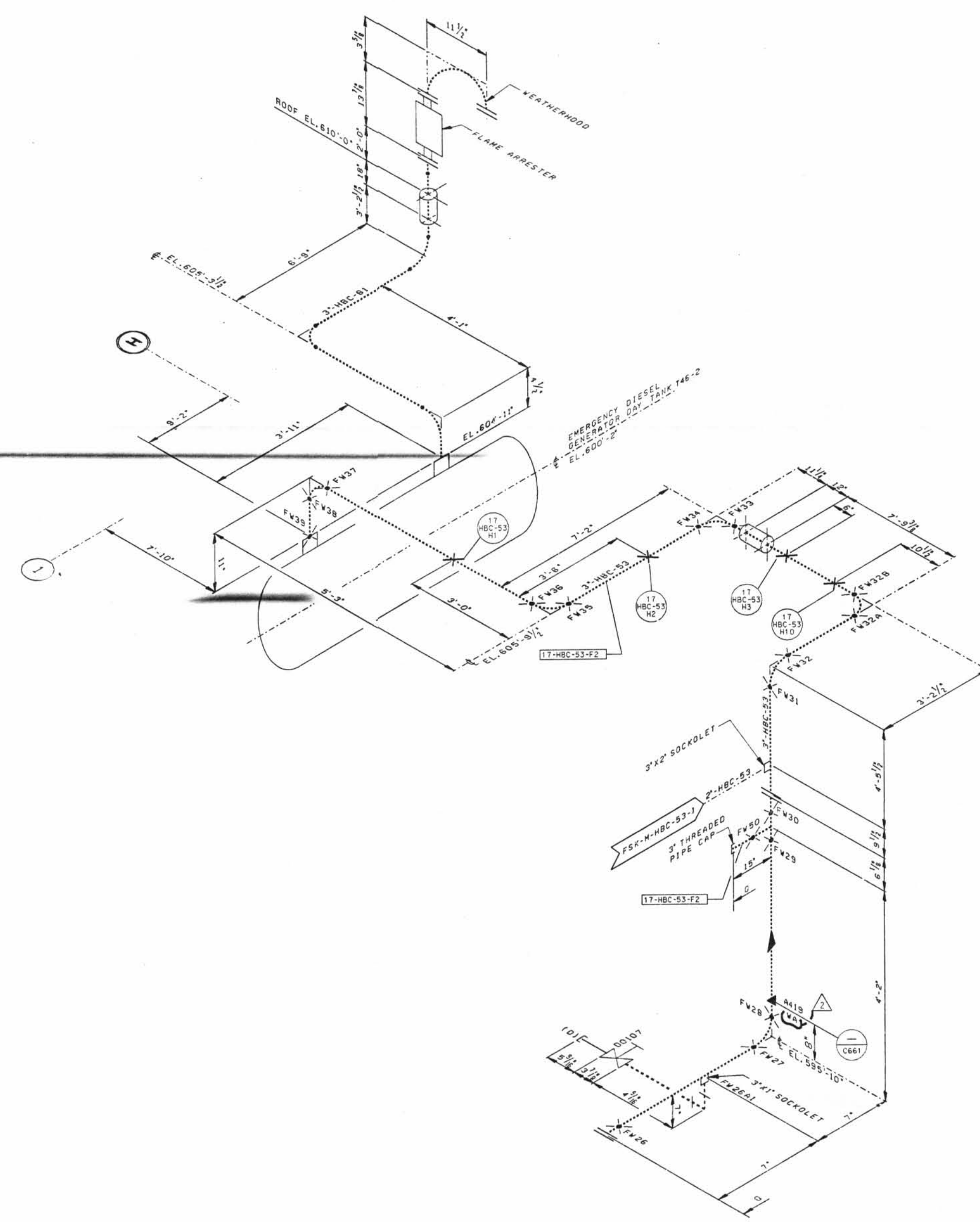


A
B
C
D
E
F
G
H
J
K



LEGEND

- ASME SECTION I CLASS 1 PIPING
- ASME SECTION XI CLASS 2 PIPING
- ASME SECTION XI CLASS 3 PIPING
- NON-ISI NUCLEAR CLASS AND HSC CLASS
- PRESSURE BOUNDARY EXTENSION
- REFERENCE & CONTINUITY
- HVAC DUCT
- ANCHOR
- CONSTANT SPRING HANGER
- VARIABLE SPRING HANGER
- HYDRAULIC SNUBBER
- MECHANICAL SNUBBER
- NON-WELDED SUPPORT ATTACHMENT
- WELDED INTEGRAL SUPPORT ATTACHMENT
- RIGID SUPPORT
- SWAY STRUT
- SNOP WELD
- FIELD WELD
- LONGITUDINAL WELD
- WELDLET
- ISI ITEM NUMBER DESIGNATION USED IN THE FIRST 10 YEAR INSERVICE INSPECTION INTERVAL

NOTES:

1. THE EGD FUEL LINE 3" HSC-81 & 3" HSC-82 WELDS AND SUPPORTS ARE EXEMPT FROM INSERVICE EXAMINATION REQUIREMENTS PER 10CFR 50.61. THE WELDS AND SUPPORTS SHOWN MAY NOT REPRESENT THE ACTUAL AS-BUILT CONDITION.

GENERAL NOTE:

DIMENSIONS SHOWN ON THIS DRAWING ARE TO BE USED FOR APPROXIMATE LOCATION ONLY. USE DESIGN DRAWINGS FOR DIMENSIONAL VERIFICATION.

REFERENCE DRAWINGS:

1S102-017A DIESEL GENERATORS

D-060

1	ISSUED FOR CONSTRUCTION	DATE	BY
2	ISSUED FOR CONSTRUCTION	DATE	BY
3	ISSUED FOR CONSTRUCTION	DATE	BY
4	ISSUED FOR CONSTRUCTION	DATE	BY
5	ISSUED FOR CONSTRUCTION	DATE	BY
6	ISSUED FOR CONSTRUCTION	DATE	BY
7	ISSUED FOR CONSTRUCTION	DATE	BY
8	ISSUED FOR CONSTRUCTION	DATE	BY
9	ISSUED FOR CONSTRUCTION	DATE	BY
10	ISSUED FOR CONSTRUCTION	DATE	BY
11	ISSUED FOR CONSTRUCTION	DATE	BY
12	ISSUED FOR CONSTRUCTION	DATE	BY
13	ISSUED FOR CONSTRUCTION	DATE	BY
14	ISSUED FOR CONSTRUCTION	DATE	BY

DAVIS-BESSE NUCLEAR POWER STATION
 UNIT NO. 1
 INSERVICE INSPECTION ISOMETRIC
 EMERGENCY DIESEL GENERATORS
 FUEL OIL SYSTEM
 ISIM2-217A
 (SHEET 11)