

LEGEND

- ASME SECTION XI CLASS 1 PIPING
- - - ASME SECTION XI CLASS 2 PIPING
- ASME SECTION XI CLASS 3 PIPING
- NON-ISI NUCLEAR CLASS AND HSC CLASS
- PRESSURE BOUNDARY EXTENSION
- REFERENCE & CONTINUITY
- D-D - HVAC DUCT
- A ANCHOR
- CS CONSTANT SPRING HANGER
- VS VARIABLE SPRING HANGER
- HS HYDRAULIC SNUBBER
- MS MECHANICAL SNUBBER
- N NON-WELDED SUPPORT ATTACHMENT
- W WELDED INTEGRAL SUPPORT ATTACHMENT
- R RIGID SUPPORT
- T SWAY STRUT
- SW SHOP WELD
- FW FIELD WELD
- LW LONGITUDINAL WELD
- ISI ITEM NUMBER DESIGNATION USED IN THE FIRST 10 YEAR INSERVICE INSPECTION INTERVAL.

NOTES:

1. MULTIPLE SWAY STRUTS, SPRING SUPPORTS OR SNUBBERS IN A SINGLE PIPING SUPPORT ARE SHOWN BY A NUMBER BEFORE THE SUPPORT TYPE. (EXAMPLE: 2MS - TWO HYDRAULIC TYPE SNUBBERS THAT ARE NOT WELDED INTEGRAL TO THE PIPE).
2. THE MAKE-UP LINE 4" HCB-23 WELDS AND SUPPORTS ARE EXEMPT FROM INSERVICE EXAMINATION REQUIREMENTS PER IWC 1220. THE WELDS AND SUPPORTS SHOWN MAY NOT REPRESENT THE ACTUAL AS-BUILT CONDITION.
3. PIPING SYSTEMS ON THIS DRAWING WHICH ARE OUTSIDE OF THE ISI BOUNDARY, ARE SHOWN FOR REFERENCE AND CONTINUITY PURPOSES ONLY. THE CONFIGURATION SHOWN MAY NOT REPRESENT THE ACTUAL AS-BUILT CONDITION.

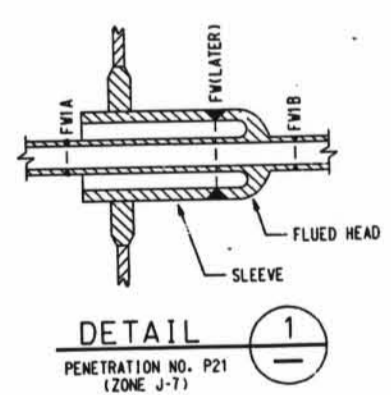
GENERAL NOTE

DIMENSIONS SHOWN ON THIS DRAWING ARE TO BE USED FOR APPROXIMATE LOCATION ONLY. USE DESIGN DRAWINGS FOR DIMENSIONAL VERIFICATION.

REFERENCE DRAWINGS:

15102-010C MAKEUP WATER TREATMENT SYSTEM

D-059



1	INC. DCN 151M-210H-2 FOR MOD 92-0032 SUPP. 0	JUN
2	INC. DCN 151M-210H-1 FOR "METALS ON FILE"	JUN
3	ISSUED FOR SECOND TO YEAR ISI PROGRAM	JUN
4	...	JUN
5	...	JUN
6	...	JUN
7	...	JUN
8	...	JUN
9	...	JUN
10	...	JUN
11	...	JUN
12	...	JUN
13	...	JUN
14	...	JUN
15	...	JUN
16	...	JUN
17	...	JUN
18	...	JUN
19	...	JUN
20	...	JUN
21	...	JUN
22	...	JUN
23	...	JUN
24	...	JUN
25	...	JUN
26	...	JUN
27	...	JUN
28	...	JUN
29	...	JUN
30	...	JUN
31	...	JUN
32	...	JUN
33	...	JUN
34	...	JUN
35	...	JUN
36	...	JUN
37	...	JUN
38	...	JUN
39	...	JUN
40	...	JUN
41	...	JUN
42	...	JUN
43	...	JUN
44	...	JUN
45	...	JUN
46	...	JUN
47	...	JUN
48	...	JUN
49	...	JUN
50	...	JUN
51	...	JUN
52	...	JUN
53	...	JUN
54	...	JUN
55	...	JUN
56	...	JUN
57	...	JUN
58	...	JUN
59	...	JUN
60	...	JUN
61	...	JUN
62	...	JUN
63	...	JUN
64	...	JUN
65	...	JUN
66	...	JUN
67	...	JUN
68	...	JUN
69	...	JUN
70	...	JUN
71	...	JUN
72	...	JUN
73	...	JUN
74	...	JUN
75	...	JUN
76	...	JUN
77	...	JUN
78	...	JUN
79	...	JUN
80	...	JUN
81	...	JUN
82	...	JUN
83	...	JUN
84	...	JUN
85	...	JUN
86	...	JUN
87	...	JUN
88	...	JUN
89	...	JUN
90	...	JUN
91	...	JUN
92	...	JUN
93	...	JUN
94	...	JUN
95	...	JUN
96	...	JUN
97	...	JUN
98	...	JUN
99	...	JUN
100	...	JUN

151M-210H 2

I HEREBY CERTIFY THAT THE DESIGN AND CONSTRUCTION OF THIS TREATMENT SYSTEM IS IN ACCORDANCE WITH THE DESIGN AND CONSTRUCTION CODES AND STANDARDS, AND THAT THE SYSTEM IS SAFE AND SOUND FOR THE USE INTENDED THEREFOR.

30X