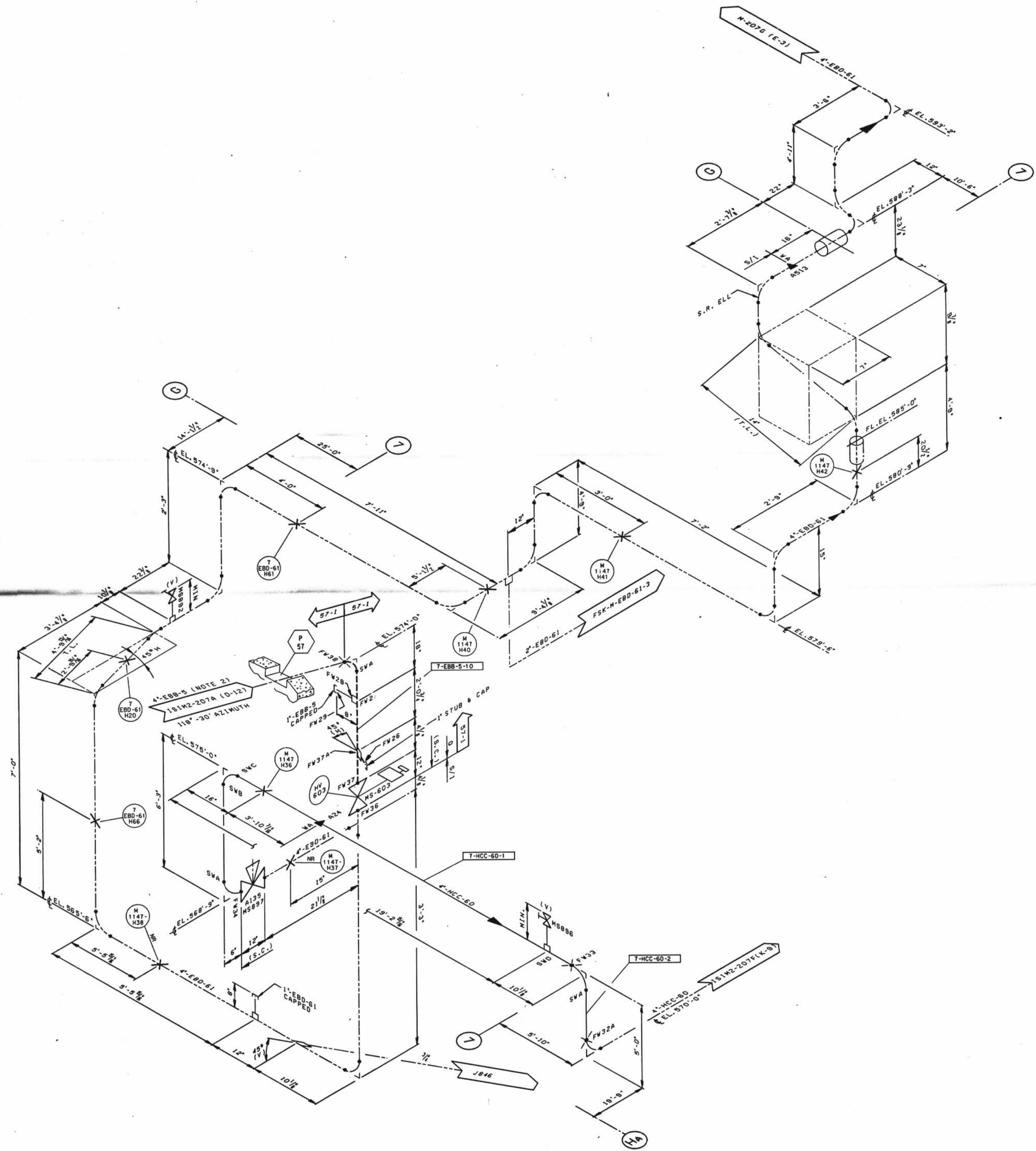




A
B
C
D
E
F
G
H
J
K

B
C
D
E
F
G
H
J
K



LEGEND

- ASME SECTION XI CLASS 1 PIPING
- ASME SECTION XI CLASS 2 PIPING
- ASME SECTION XI CLASS 3 PIPING
- NON-151 NUCLEAR CLASS AND HSC CLASS
- PRESSURE BOUNDARY EXTENSION
- REFERENCE & CONTINUITY
- D-D-HVAC DUCT
- A ANCHOR
- CS CONSTANT SPRING HANGER
- VS VARIABLE SPRING HANGER
- HS HYDRAULIC SNUBBER
- MS MECHANICAL SNUBBER
- N NON-WELDED SUPPORT ATTACHMENT
- W WELDED INTEGRAL SUPPORT ATTACHMENT
- R RIGID SUPPORT
- T SWAY STRUT
- SW SHOP WELD
- FW FIELD WELD
- LW LONGITUDINAL WELD
- WOL WELDLEET
- IS1 ITEM NUMBER DESIGNATION USED IN THE FIRST 10 YEAR INSERVICE INSPECTION INTERVAL.

NOTES:

1. MULTIPLE SWAY STRUTS, SPRING SUPPORTS OR SNUBBERS IN A SINGLE PIPING SUPPORT ARE SHOWN BY A NUMBER BEFORE THE SUPPORT TYPE. (EXAMPLE: 2MS - TWO HYDRAULIC TYPE SNUBBERS THAT ARE NOT WELDED INTEGRAL TO THE PIPE).
2. THE STEAM GENERATOR DRAIN LINE 4" EBB-5 WELDS AND SUPPORTS ARE EXEMPT FROM INSERVICE EXAMINATION REQUIREMENTS PER 10C 1220. THE WELDS AND SUPPORTS SHOWN MAY NOT REPRESENT THE ACTUAL AS-BUILT CONDITION.
3. PIPING SYSTEMS ON THIS DRAWING WHICH ARE OUTSIDE OF THE IS1 BOUNDARY, ARE SHOWN FOR REFERENCE AND CONTINUITY PURPOSES ONLY. THE CONFIGURATION SHOWN MAY NOT REPRESENT THE ACTUAL AS-BUILT CONDITION.

GENERAL NOTE:

DIMENSIONS SHOWN ON THIS DRAWING ARE TO BE USED FOR APPROXIMATE LOCATION ONLY. USE DESIGN DRAWINGS FOR DIMENSIONAL VERIFICATION.

REFERENCE DRAWINGS:

- 15102-0078 STEAM GENERATOR SECONDARY SYSTEM
- HL-1147, SA.3 HANGER LOCATION DRAWING, FOR 78-126

D-057

DATE	ISSUED FOR SECOND 10 YEAR IS1 PROGRAM	BY	DATE	SCALE	1/8" = 1'-0"
DAVIS-BESSE NUCLEAR POWER STATION UNIT NO. 1					
INSERVICE INSPECTION ISOMETRIC STEAM GENERATOR NO. 1-2 DRAIN/BLOWDOWN SYSTEM AUXILIARY AND TURBINE BUILDING					
DRAWING NO. IS1M2-207G					REV. 1

I CERTIFY THAT THE IMAGE CONTAINED ON THIS FRAME WAS MADE BY THE NORMAL AND REGULAR COURSE OF BUSINESS, OR THE DATE STATED BELOW AND THAT IT IS AN ACCURATE REPRODUCTION OF THE RECORDED ORIGINAL TO WHICH RECORD NUMBER...