

A  
B  
C  
D  
E  
F  
G  
H  
J  
K



LEGEND

- ASME SECTION XI CLASS 1 PIPING
- ASME SECTION XI CLASS 2 PIPING
- ASME SECTION XI CLASS 3 PIPING
- NON-121 NUCLEAR CLASS AND NSC CLASS
- PRESSURE BOUNDARY EXTENSION
- REFERENCE & CONTINUITY
- D-D HVAC DUCT
- A ANCHOR
- CS CONSTANT SPRING HANGER
- VS VARIABLE SPRING HANGER
- HS HYDRAULIC SNUBBER
- MS MECHANICAL SNUBBER
- N NON-WELDED SUPPORT ATTACHMENT
- W WELDED INTEGRAL SUPPORT ATTACHMENT
- R RIGID SUPPORT
- T SWAY STRUT
- SW SHOP WELD
- FW FIELD WELD
- LW LONGITUDINAL WELD
- WOL WELDOLET
- IS1 ITEM NUMBER DESIGNATION USED IN THE FIRST 10 YEAR INSERVICE INSPECTION INTERVAL.

NOTES:

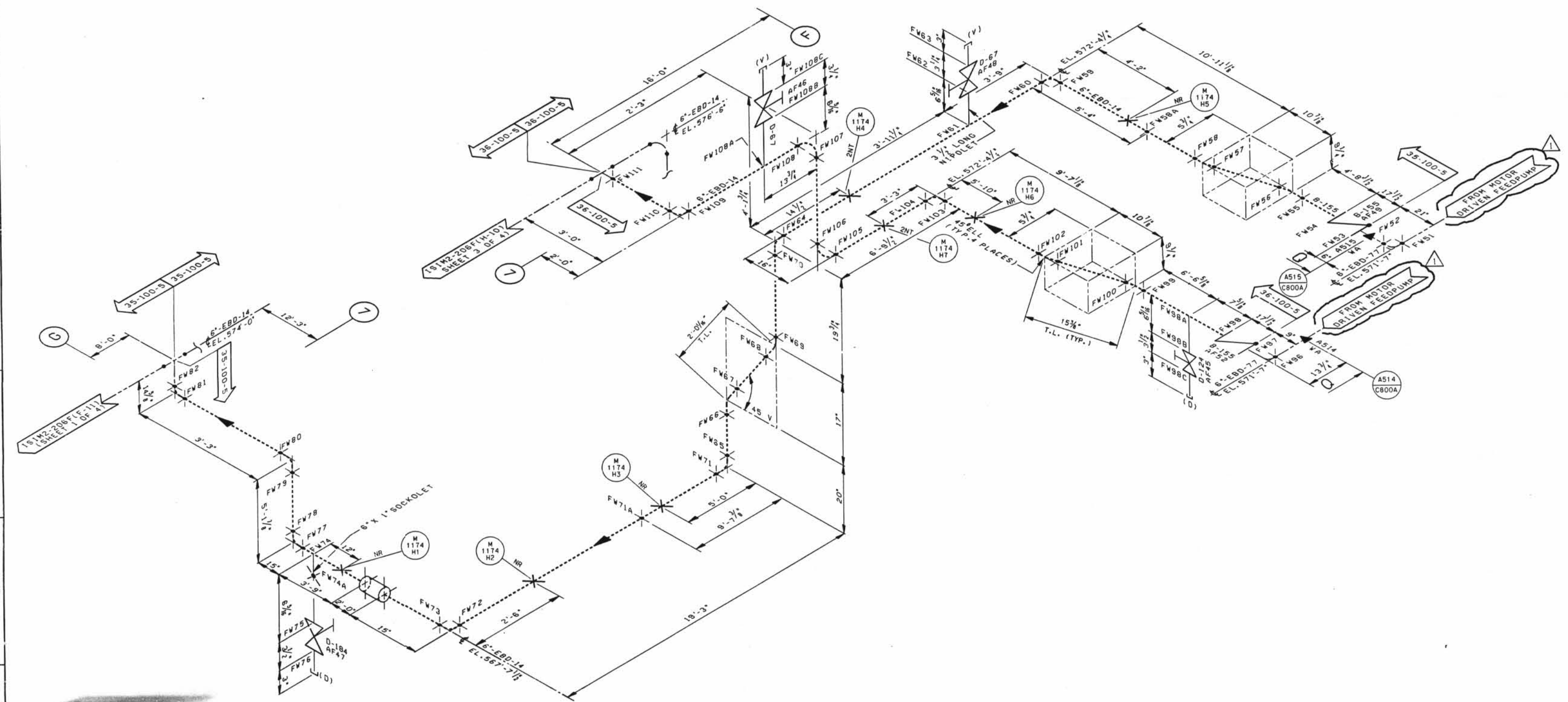
1. MULTIPLE SWAY STRUTS, SPRING SUPPORTS OR SNUBBERS IN A SINGLE PIPING SUPPORT ARE SHOWN BY A NUMBER BEFORE THE SUPPORT TYPE. (EXAMPLE: 2MS - TWO HYDRAULIC TYPE SNUBBERS THAT ARE NOT WELDED INTEGRAL TO THE PIPE).
2. THERE ARE NO SPOOL NUMBERS FOR PIPING ON THIS DRAWING.
3. THE SUPPORTS ON THE MOTOR DRIVEN FEED PUMP LINE 6"-EBD-14 ARE WITHIN THE ISI EXAMINATION BOUNDARY. THE PIPING WELDS IN THIS LINE ARE SHOWN FOR REFERENCE PURPOSES ONLY. THESE WELDS MAY NOT BE REPRESENTED IN THE ACTUAL AS-BUILT CONDITION.

GENERAL NOTES:

DIMENSIONS SHOWN ON THIS DRAWING ARE TO BE USED FOR APPROXIMATE LOCATION ONLY. USE DESIGN DRAWINGS FOR DIMENSIONAL VERIFICATION.

REFERENCE DRAWINGS:

- IS102-000 AUXILIARY FEEDWATER SYSTEM
- IS102-007B STEAM GENERATOR SECONDARY SYSTEM
- HL-1174 HANGER LOCATION DRAWING
- SHT. 2 OF 2 FOR P-241 DISCHARGE



D-051

DATE	REVISIONS	BY	CHK'D	DATE
SCALE N.T.S.    DESIGNED    DRAWN CB    DATE				
<b>DAVIS-BESSE NUCLEAR POWER STATION</b> UNIT NO. 1				
INSERVICE INSPECTION ISOMETRIC CONDENSATE SYSTEM MOTOR DRIVEN FEED PUMP P-241 DISCHARGE				
DRAWING NO.				REV.
IS1M2-2060				1

E

D

C

B

A

I

A

B

C

D

E