

LEGEND

- ASME SECTION XI CLASS 1 PIPING
- ASME SECTION XI CLASS 2 PIPING
- ASME SECTION XI CLASS 3 PIPING
- NON-ISI NUCLEAR CLASS AND HSC CLASS
- PRESSURE BOUNDARY EXTENSION
- REFERENCE B CONTINUITY
- D-D - HYVAC DUCT
- A - ANCHOR
- CS - CONSTANT SPRING HANGER
- VS - VARIABLE SPRING HANGER
- HS - HYDRAULIC SNUBBER
- MS - MECHANICAL SNUBBER
- N - NON-WELDED SUPPORT ATTACHMENT
- W - WELDED INTEGRAL SUPPORT ATTACHMENT
- R - RIGID SUPPORT
- T - SWAY STRUT
- SW - SHOP WELD
- FW - FIELD WELD
- LW - LONGITUDINAL WELD
- WOL - WELDOLET
- ISI ITEM NUMBER DESIGNATION USED IN THE FIRST 10 YEAR INSERVICE INSPECTION INTERVAL.

NOTES:

1. MULTIPLE SWAY STRUTS, SPRING SUPPORTS OR SNUBBERS IN A SINGLE PIPING SUPPORT ARE SHOWN BY A NUMBER BEFORE THE SUPPORT TYPE. (EXAMPLE: 2MS - TWO HYDRAULIC TYPE SNUBBERS THAT ARE NOT WELDED INTEGRAL TO THE PIPE.)

GENERAL NOTE

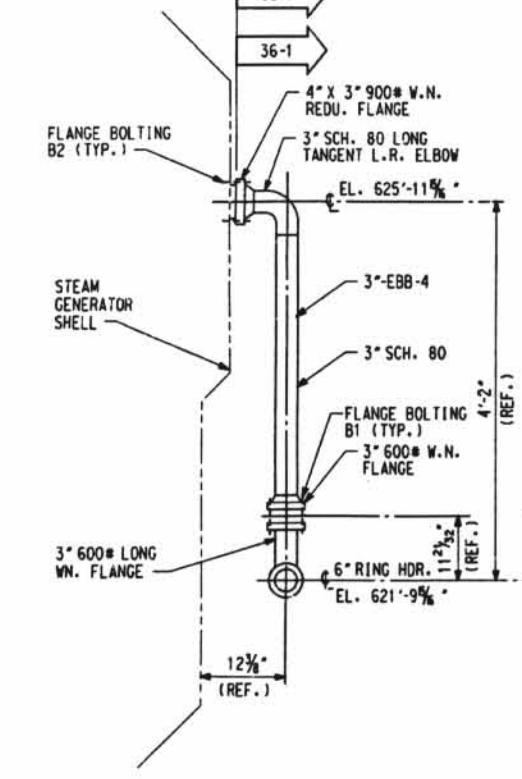
DIMENSIONS SHOWN ON THIS DRAWING ARE TO BE USED FOR APPROXIMATE LOCATION ONLY. USE DESIGN DRAWINGS FOR DIMENSIONAL VERIFICATION.

REFERENCE DRAWINGS:

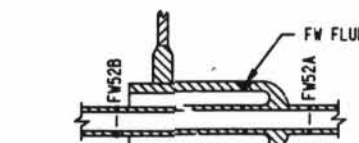
- 15102-007A STEAM GENERATOR SECONDARY SYSTEM
- 15102-007B STEAM GENERATOR SECONDARY SYSTEM
- BARCOCK & WILCOX DRAWING 1134882
- AUXILIARY FEEDWATER INLET HEADER ASSEMBLY
- BARCOCK & WILCOX DRAWING 1134883
- AUXILIARY FEEDWATER HEADER GENERAL ARRANGEMENT

D-050

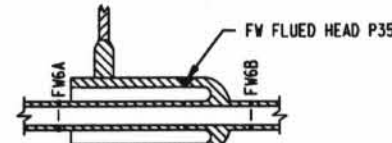
DETAIL "A"
AUX. F.W. RING HEADER
S.G. 1-2 SHOWN
S.G. 1-1 ROTATED 180°
N.T.S.



SECTION "A-A"
N.T.S.



DETAIL 1
PENETRATION NO. 36
(ZONE H-6)



DETAIL 2
PENETRATION NO. 35
(ZONE H-10)

DATE	NO. 7.5	ISSUED	BY	REV.
DAVIS-BESSE NUCLEAR POWER STATION UNIT NO. 1				
INSERVICE INSPECTION ISOMETRIC AUXILIARY FEEDWATER SYSTEM CONTAINMENT				
ISIM2-206N				1