



LEGEND

- ASME SECTION XI CLASS 1 PIPING
- - - ASME SECTION XI CLASS 2 PIPING
- ASME SECTION XI CLASS 3 PIPING
- NON-ISI NUCLEAR CLASS AND HSC CLASS
- PRESSURE BOUNDARY EXTENSION
- REFERENCE & CONTINUITY
- D - D - HVAC DUCT
- A ANCHOR
- CS CONSTANT SPRING HANGER
- VS VARIABLE SPRING HANGER
- HS HYDRAULIC SNUBBER
- MS MECHANICAL SNUBBER
- N NON-WELDED SUPPORT ATTACHMENT
- W WELDED INTEGRAL SUPPORT ATTACHMENT
- R RIGID SUPPORT
- T SWAY STRUT
- SW SHOP WELD
- FW FIELD WELD
- LW LONGITUDINAL WELD
- WOL WELDOLET
- ISI ITEM NUMBER DESIGNATION USED IN THE FIRST 10 YEAR INSERVICE INSPECTION INTERVAL.

NOTES:

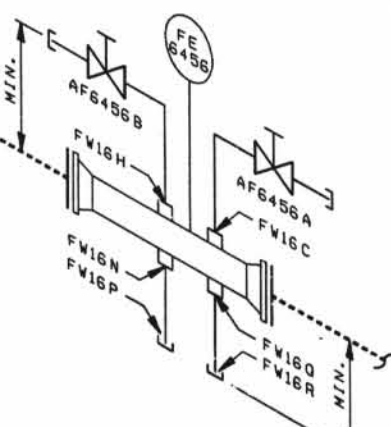
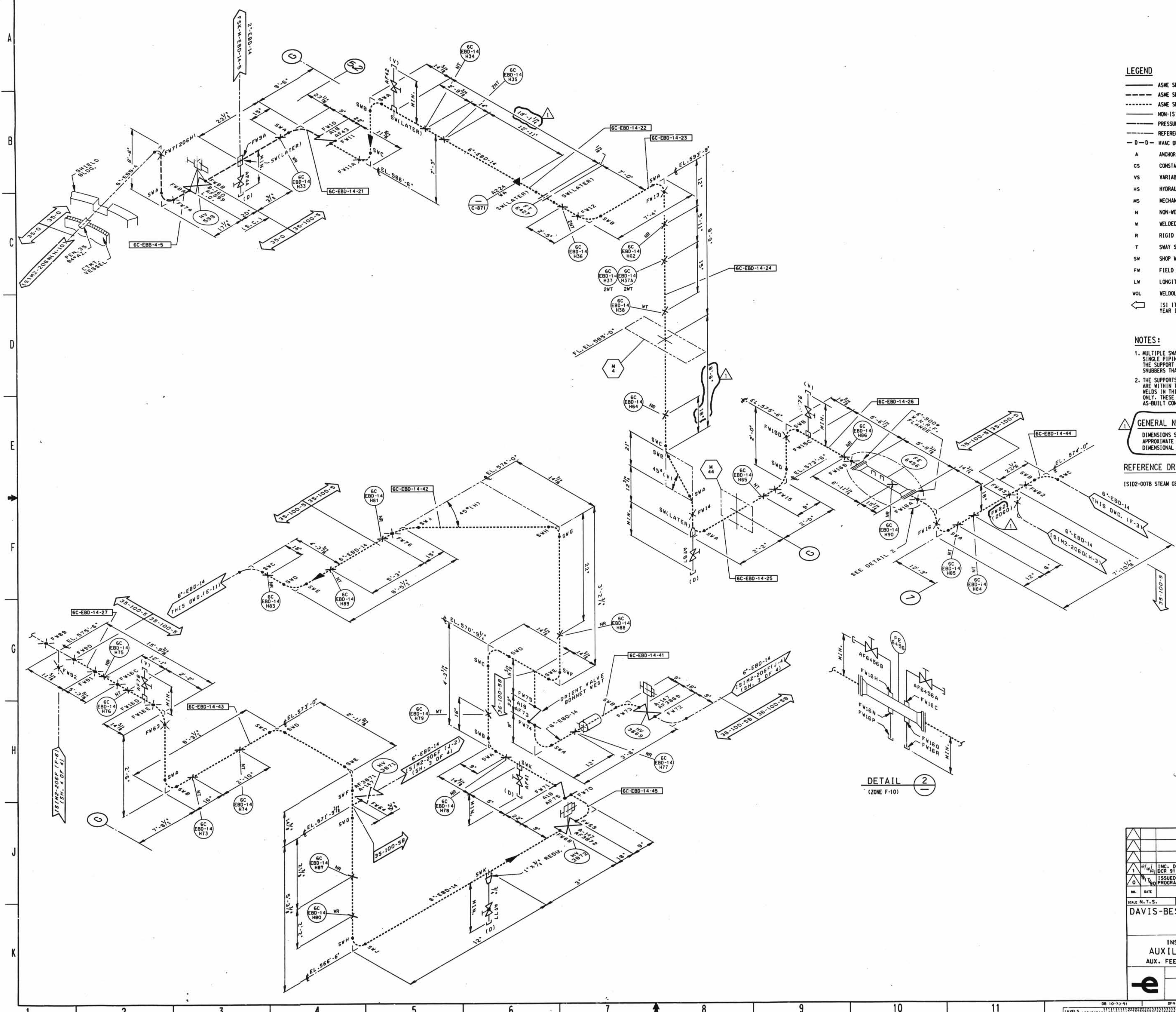
1. MULTIPLE SWAY STRUTS, SPRING SUPPORTS OR SNUBBERS IN A SINGLE PIPING SUPPORT ARE SHOWN BY A NUMBER BEFORE THE SUPPORT TYPE. (EXAMPLE: 2MS - TWO HYDRAULIC TYPE SNUBBERS THAT ARE NOT WELDED INTEGRAL TO THE PIPE.)
2. THE SUPPORTS ON THE AUXILIARY FEEDWATER LINE 6" EBD-14 ARE WITHIN THE ISI EXAMINATION BOUNDARY. THE PIPING WELDS IN THIS LINE ARE SHOWN FOR REFERENCE PURPOSES ONLY. THESE WELDS MAY NOT BE REPRESENTED IN THE ACTUAL AS-BUILT CONDITION.

GENERAL NOTE

DIMENSIONS SHOWN ON THIS DRAWING ARE TO BE USED FOR APPROXIMATE LOCATION ONLY. USE DESIGN DRAWINGS FOR DIMENSIONAL VERIFICATION.

REFERENCE DRAWINGS:

IS102-0078 STEAM GENERATOR SECONDARY SYSTEM



D-044

INC. DCH IS102-206F-1 FOR DCR 91-011		JFS	✓	✓	✓
ISSUED FOR SECOND YEAR ISI PROGRAM		JJK	✓	TWB	MCP
NO.	DATE	REVISIONS	BY	CHKD.	APP.
SCALE	N.T.S.	DESIGNED	DRWN	CB	EXTS
DAVIS-BESSE NUCLEAR POWER STATION					
UNIT NO. 1					
INSERVICE INSPECTION ISOMETRIC					
AUXILIARY FEEDWATER SYSTEM					
AUX. FEED PUMP DISCH. TO STEAM GENERATORS					
DRAWING NO. IS102-206F					
(SHEET 1)					