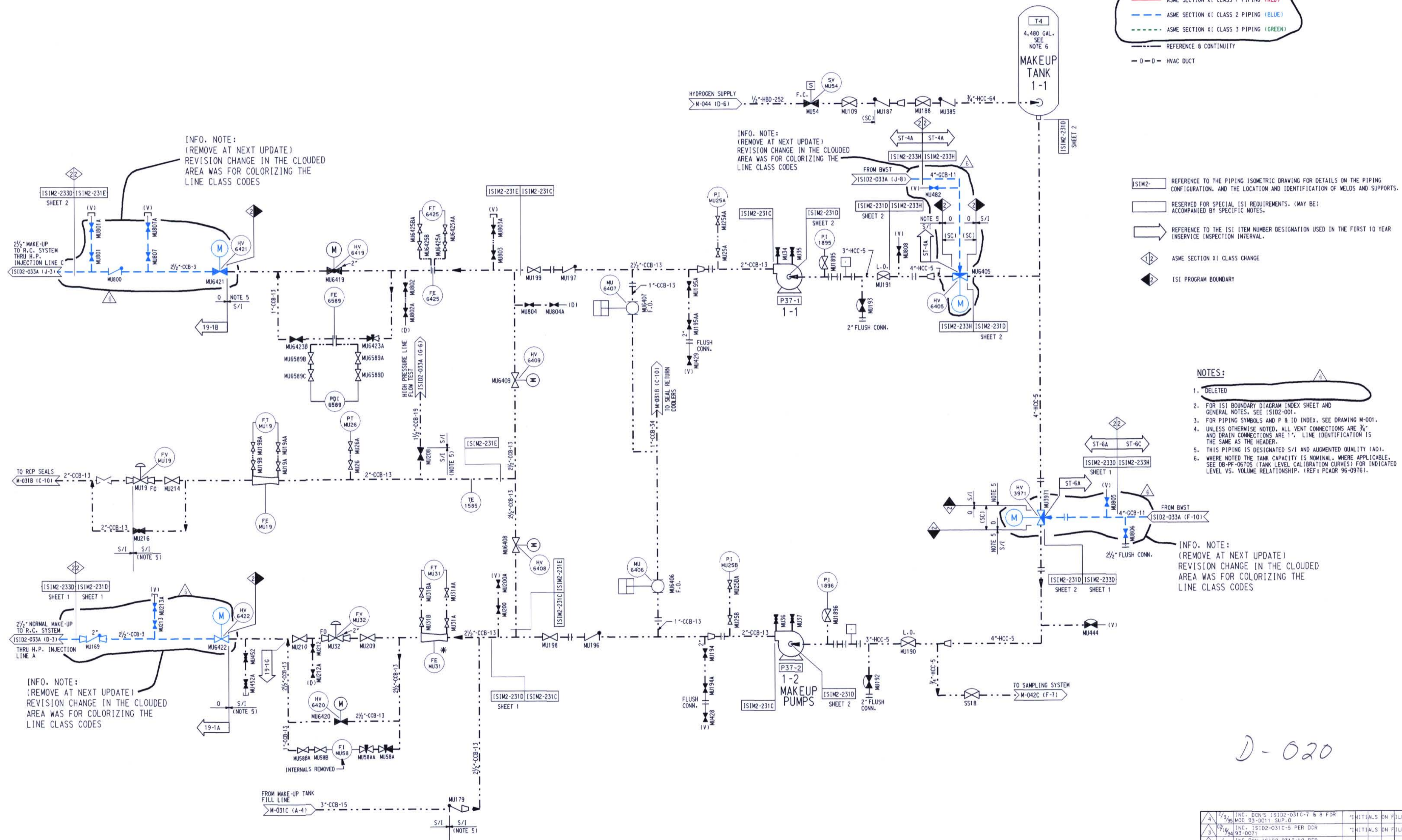


LEGEND

- ASME SECTION XI CLASS 1 PIPING (RED)
- ASME SECTION XI CLASS 2 PIPING (BLUE)
- ASME SECTION XI CLASS 3 PIPING (GREEN)
- REFERENCE & CONTINUITY
- D-O HVAC DUCT



INFO. NOTE:
(REMOVE AT NEXT UPDATE)
REVISION CHANGE IN THE CLOUDED
AREA WAS FOR COLORIZING THE
LINE CLASS CODES

INFO. NOTE:
(REMOVE AT NEXT UPDATE)
REVISION CHANGE IN THE CLOUDED
AREA WAS FOR COLORIZING THE
LINE CLASS CODES

- ISIM2- REFERENCE TO THE PIPING ISOMETRIC DRAWING FOR DETAILS ON THE PIPING CONFIGURATION, AND THE LOCATION AND IDENTIFICATION OF WELDS AND SUPPORTS.
- RESERVED FOR SPECIAL ISI REQUIREMENTS. (MAY BE ACCOMPANIED BY SPECIFIC NOTES.)
- REFERENCE TO THE ISI ITEM NUMBER DESIGNATION USED IN THE FIRST TO YEAR INSERVICE INSPECTION INTERVAL.
- ASME SECTION XI CLASS CHANGE
- ISI PROGRAM BOUNDARY

- NOTES:**
- DELETED
 - FOR ISI BOUNDARY DIAGRAM SHEET AND GENERAL NOTES, SEE ISID2-001.
 - FOR PIPING SYMBOLS AND P & ID INDEX, SEE DRAWING M-001.
 - UNLESS OTHERWISE NOTED, ALL VENT CONNECTIONS ARE 3/4" AND DRAIN CONNECTIONS ARE 1". LINE IDENTIFICATION IS THE SAME AS THE HEADER.
 - THIS PIPING IS DESIGNATED S/I AND AUGMENTED QUALITY (AQ).
 - WHERE NOTED THE TANK CAPACITY IS NOMINAL, WHERE APPLICABLE. SEE DB-PF-06705 (TANK LEVEL CALIBRATION CURVES) FOR INDICATED LEVEL VS. VOLUME RELATIONSHIP. (REF: PCAOR 96-0976).

INFO. NOTE:
(REMOVE AT NEXT UPDATE)
REVISION CHANGE IN THE CLOUDED
AREA WAS FOR COLORIZING THE
LINE CLASS CODES

INFO. NOTE:
(REMOVE AT NEXT UPDATE)
REVISION CHANGE IN THE CLOUDED
AREA WAS FOR COLORIZING THE
LINE CLASS CODES

D-020

1/2	INC. DONS ISID2-031C-7 & B FOR MOD 93-0011 SUP. D	INITIALS DN FILE
2	INC. ISID2-031C-5 PER DCR 93-0071	INITIALS DN FILE
6	INC DCM ISID2-031C-10 PER DCR 00-1766	SDW
8	INC DCM ISID2-031C-9 PER DCR 99-0001	INITIALS DN FILE
9	ISSUED FOR SECOND TO YEAR ISI PROGRAM	INITIALS DN FILE

NO.	DATE	REVISIONS	BY	CHK	ENGR.	ENGR. SUPV.	ENGR. MGR.
SCALE	N. T. S.	DESIGNED	DATE	DRAWN	BLN	DATE	
DAVIS-BESSE NUCLEAR POWER STATION UNIT NO. 1							
THE FLEET EMISSION COMPANY							
INSERVICE INSPECTION DIAGRAM MAKE UP & PURIFICATION SYSTEM							
DRAWING NO.						REV.	
ISID2-031C						6	